

HiFi Player

Caution:

When using this precision electronics gadget, some kind reminders for you:

1. Keep the item away from the EME and m moisture environment.
2. Do not try to disassemble or rebuild the product.
3. Do not clran the item with corrosive detergent.
4. Keep away form water.
5. Do not squeeze the item.
6. Do not directly bath under the sun, keep away from fire or high and low temperatures.
7. Do not shock or crash it.
8. Use at low volume first, and gradually increase to the suitable volume. To Protect your hearing, do not set at too high volume.
9. Keep the item in a safe place, keep away from the child.
10. When connecting to the computer or charging, the body will be hot, it is normal. It takes 5 hours to be fully charged.
11. Do not disassemble the device, it will void the

warranty, any issues, please kindly contact us via email:

12. Do not use it while driving, riding, or other circumstances that are not suitable.

13. Charging Notice:

A) the device was equipped with a polymer lithium ion battery, it can repeat charging. The first time using, we suggest to be fully charged at least 5 hours, in order to extend the battery life.

B) After full charge, continue to charge 30 minutes, so it can play longer time.

C) Do not change the battery by self.

D) Battery life may vary from working environment.

14. Charging: input 5V 1000mA(over charging or low charging may damage the battery or decrease battery life span).

15. The item may release new firmware that may lead to difference content from the user manual.

Packing list

1 x H66 Device

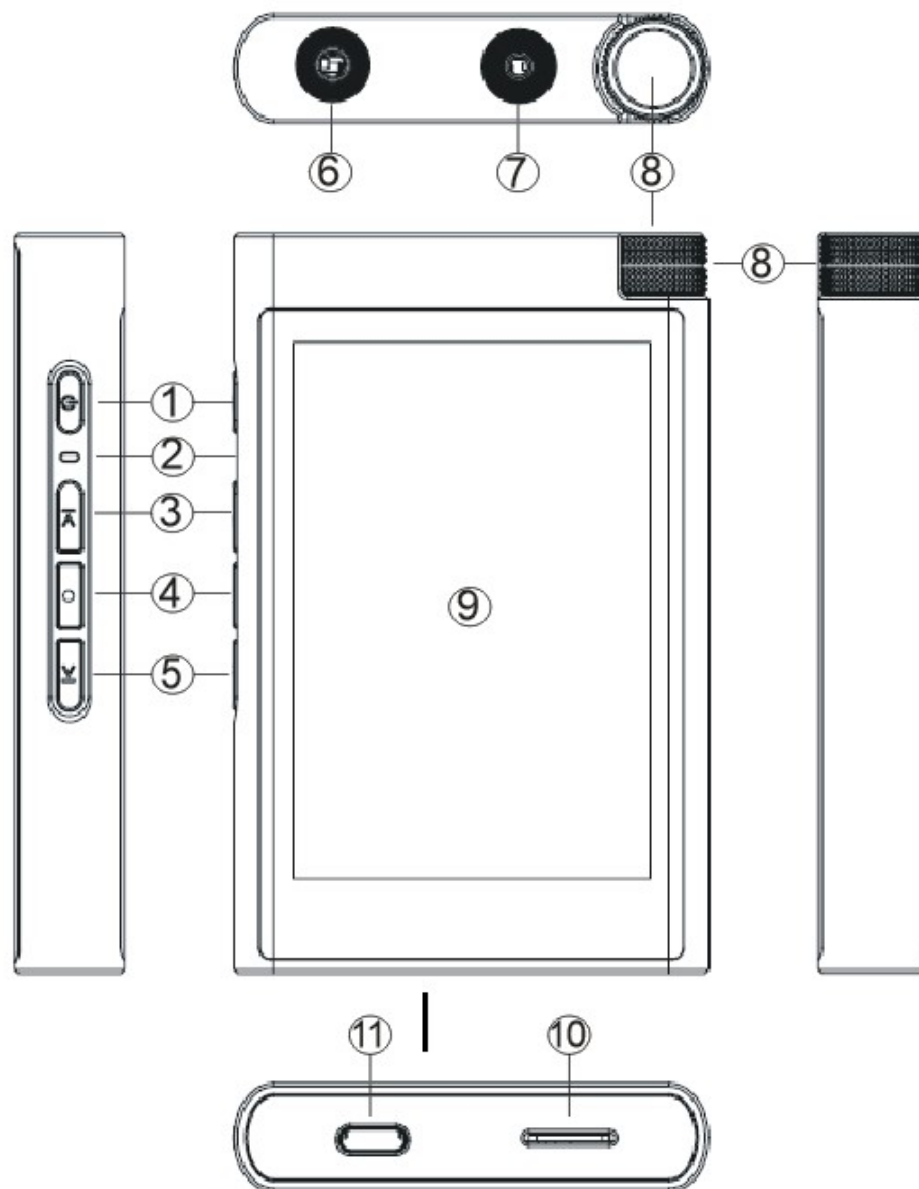
1 x USB Cable(type-c)

Product Feature

-3.5 inch 320X480pixels IPS High Resolution Display.

- in cell high sensitivity full capacitive screen.
- 24bit/384khz master tape grade playback, support various lossless audio format.
- Elegant zinc alloy housing.
- Embed with ESS top grade chip ES9218PC to drive the 3.5mm single-ended headphone jack.
- Come with high definition recording function, adopted the DMIC digital recording, easy to record high quality audio in various format and sampling rate.
- Headphone output 2Vrms, the power is strong.
- Touch operation and key operation, easy to use at the style you like.
- CSR4.2 two-way Bluetooth, support lossless transmission.
- Independent clock system, low noise, low vibrate passive crystal to ensure the perfect hardware decoding DSD256 lossless audio.
- USB DAC decoding, can use as computer external sound card 1.
- Support LINE OUT (LO) Analog output and SPDIF out digital audio output, support various audio equipment.
- Built-in 2200mAh High Capacity battery, ensure long playback time.

KEYS Function



- 1, Power
- 2, Indicator Light
- 3, Prev
- 4, Play/Pause
- 5, Next
- 6, 3.5mm headphone jack
- 7, 2.5mm balance headphone jack
- 8, Volume knob
- 9, Display screen
- 10, TF Card
- 11, TYPE-C USB

Functions

Power ON/OFF

Press the POWER button 3 seconds, it will turn on the device, and blue indicator light ON. When device is ON, press the POWER button, it will turn off the device.

Notice: when device frozen, we can press and hold the POWER button to reset the device.

Lock Screen

Press the POWER button 1 seconds to lock/unlock the screen. We can also set different buttons to lock/unlock the screen in system setting.

Device Reset

When device not works correctly, press and hold the POWER button 10 seconds, until the blue indicator light off, and then turn on the device, error will correct.

Blue Indicator Light

When machine is working, it will also on.

Charging

- charging through wall adapter: input rate 5V 2000m A
- charging through PC/Laptop: usually its power not enough, charging time will be longer.

-charging through power bank

Notice: if device not used for long time, please kindly charge it every 3 months to extend the battery life.

While charging and playing, the device will be kind of hot, it is normal.

SPDIF Output

If no earphone detected, the device will default set at SPDIF output, we can connect to the USB-C port (charging port) to hearing music (if have USB C port device in your hand)

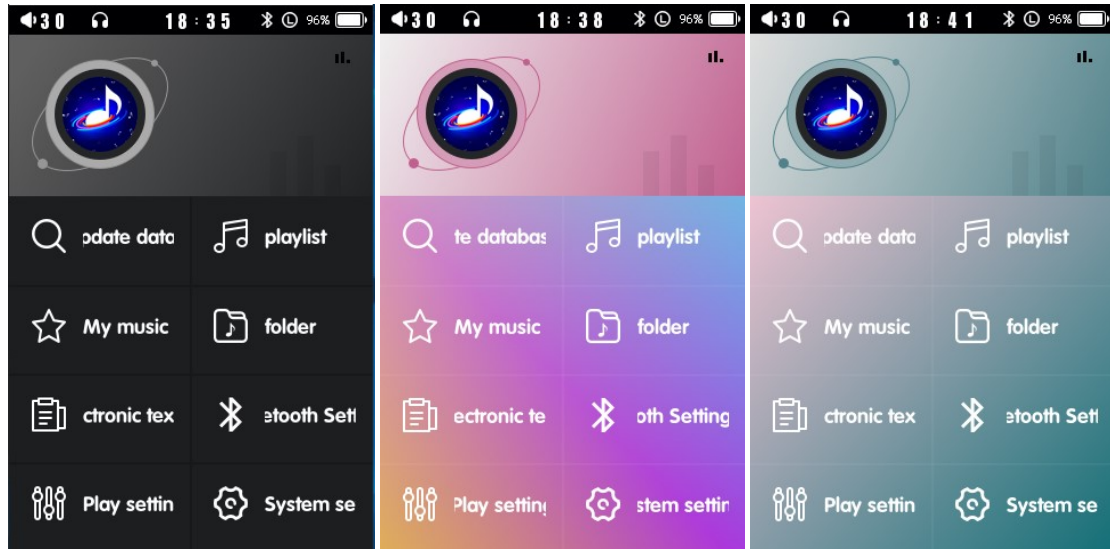
Insert TF Card

Insert TF in correctly direction, it will automatically lock the card. If need to remove the TF card, just simple push in the TF and release, TF card will jump out, and then take it.

Notive: please kindly choose CLASS10 above high speed card, in order to get fluently music experience. Device didn" t include TF card, need buy additional.

Music Player Menu

Main Interface



At the main interface, it has 8 section: Music Scanning, Playlist, My music, folder, e-book, Bluetooth, Play Setting, System Setting. Just simply touch the function to enter respective settings.

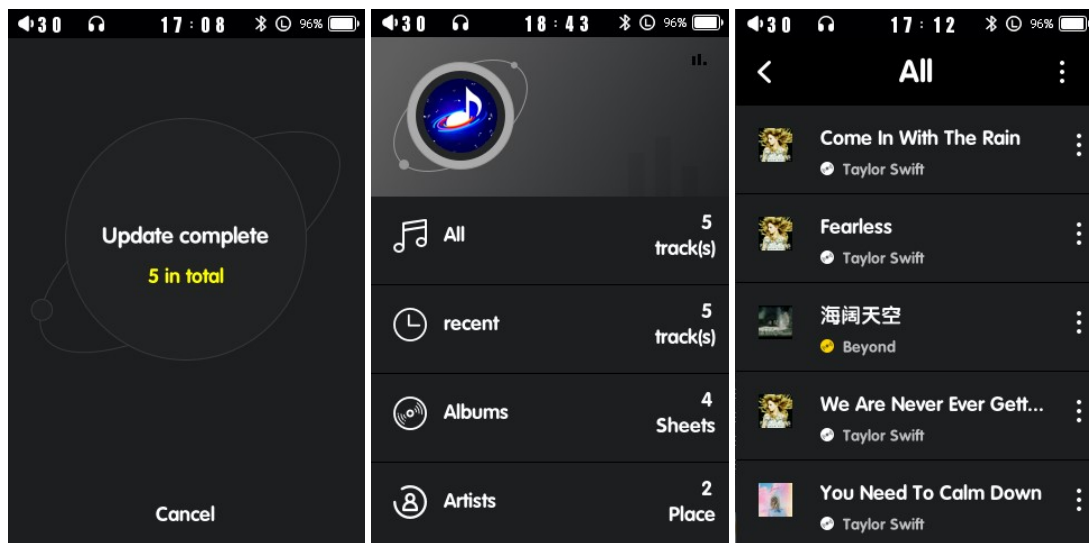
The main interface is as shown in the picture above, which can be divided into 3 style, You can set your favorite style in the theme style in the system Settings.

Music Scanning

Touch the Music Scanning section, it can scan all music files on the device.

Select Scan mode from the system settings menu. If you do not scan and update the changed song, The list will still save the previous information, which may cause the

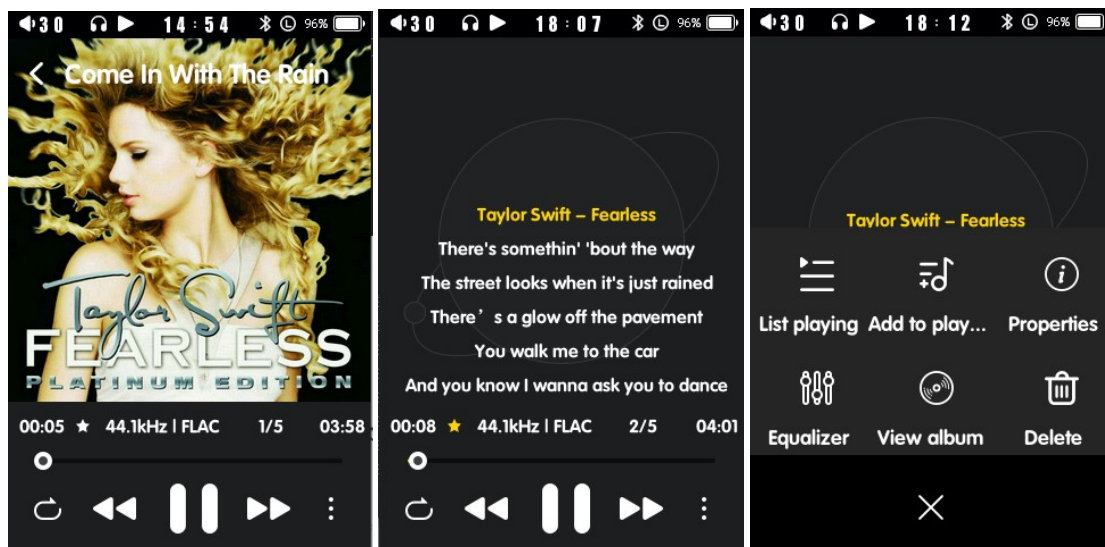
song cannot be found and the file cannot be played



Playlist Interface

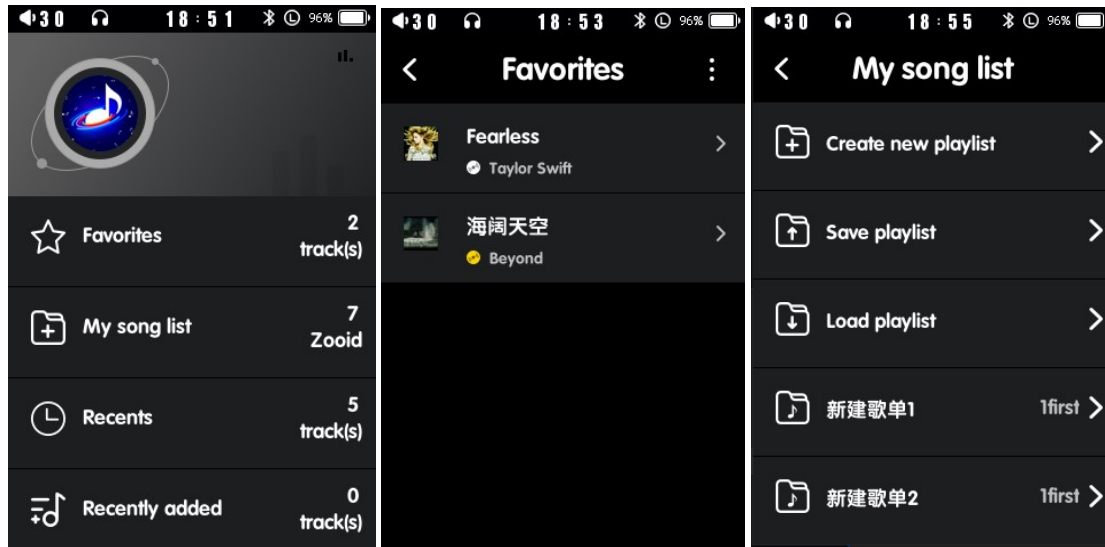
This list mainly shows all the songs stored after scanning and the number, According to the latest play, Album, singer, style classification, to quickly find favorite songs.

Playback Interface



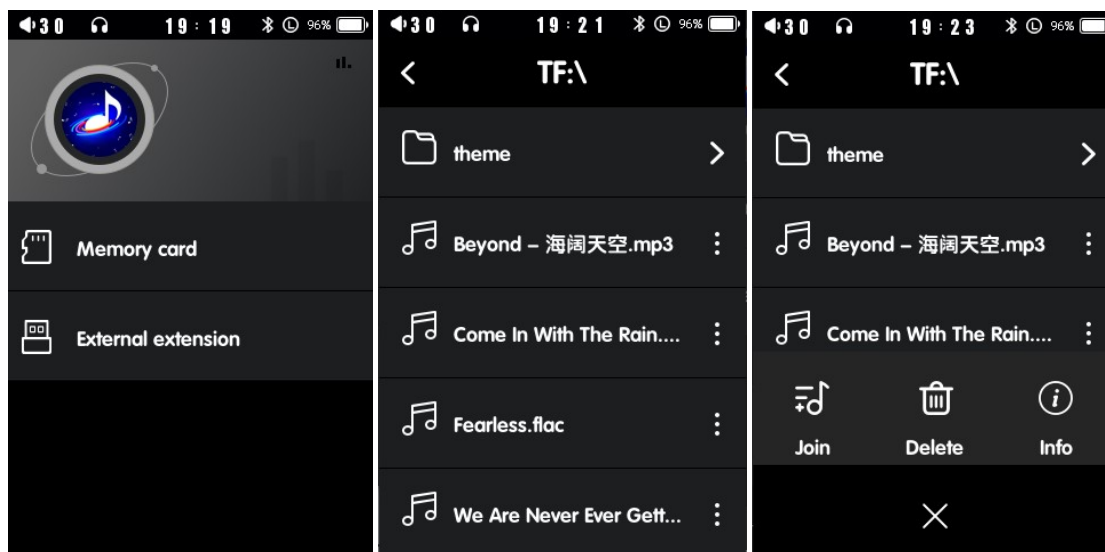
Click blank place, it will show lyrics (if has)

Click  go to current playlist, EQ setting and more



My Music

My music is added to my favorites and created by myself when playing songs Create a playlist of songs folder

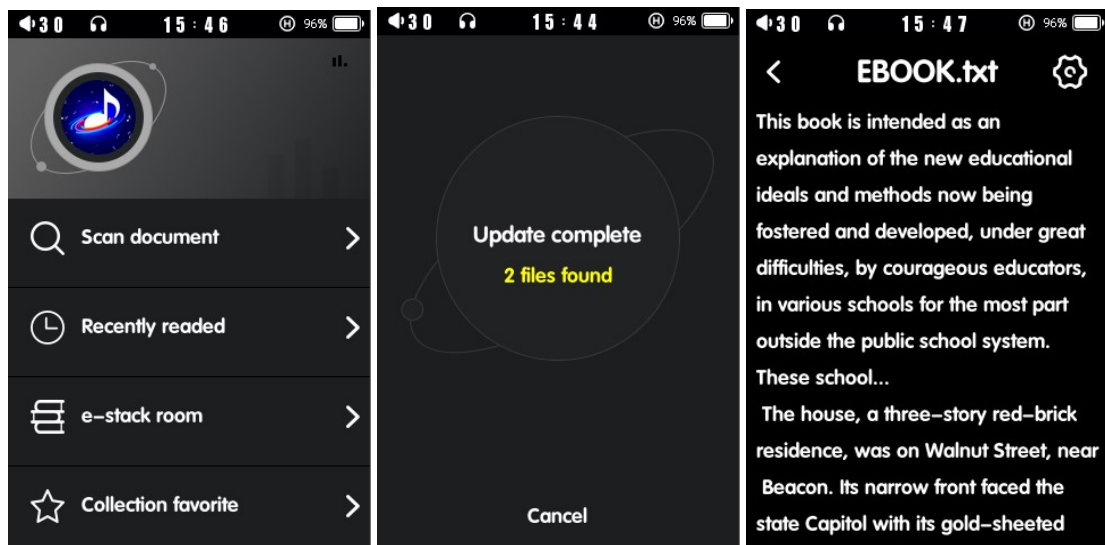


Folder

Mainly display TF Card and OTG external expansion device , view Folders and songs in the device can also be played directly/temporarily in the song list Stop; Click after the song name to add to playlist,delete and search

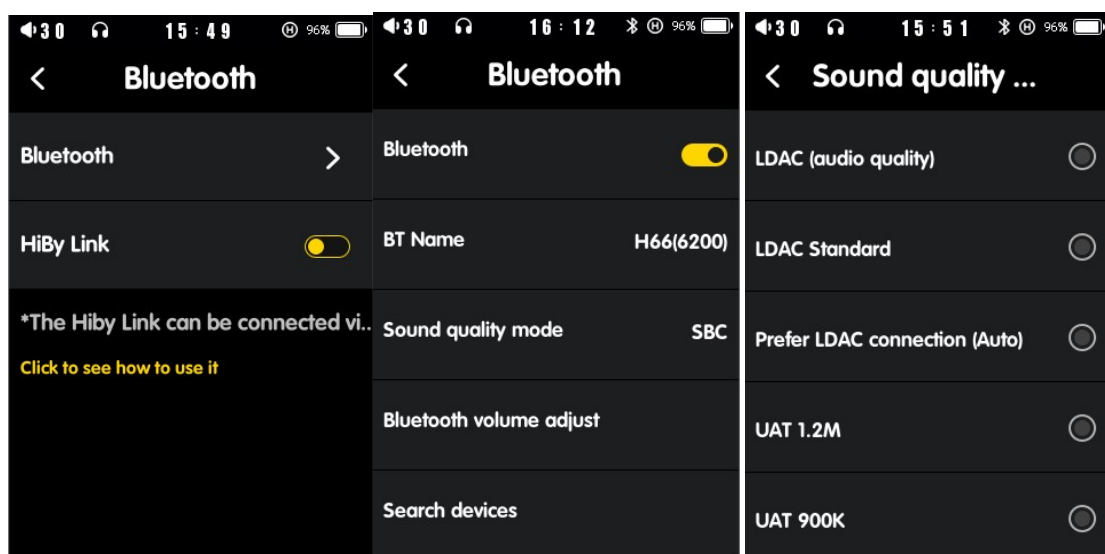
See song information

E-BOOK



Enter the E-book, you can search the e-book document, open the e-book document you want to read, view the recently read e-book document and edit, add favorites or delete operations.

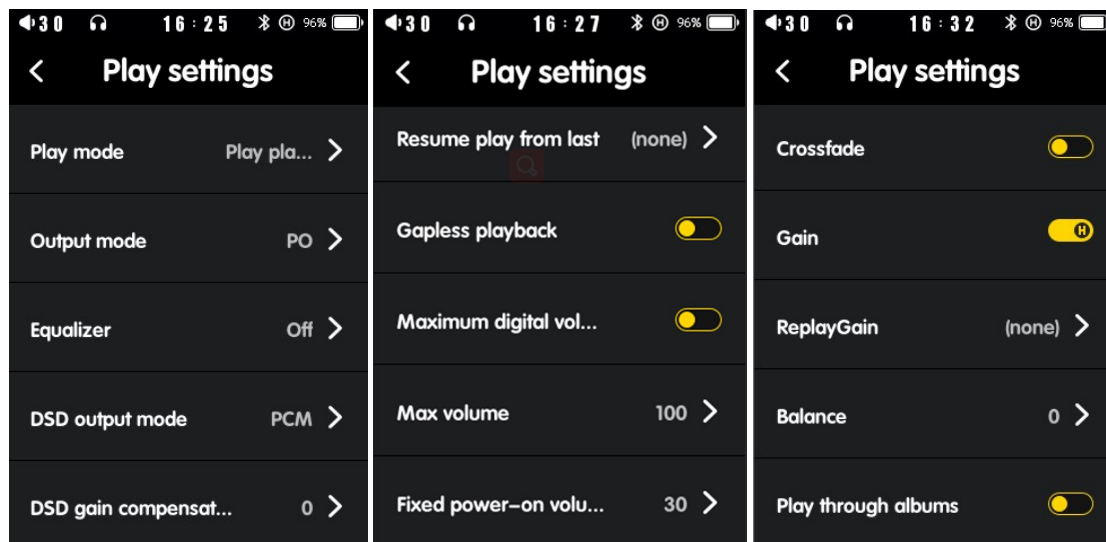
Bluetooth



Turn ON/OFF Bluetooth function, and search for

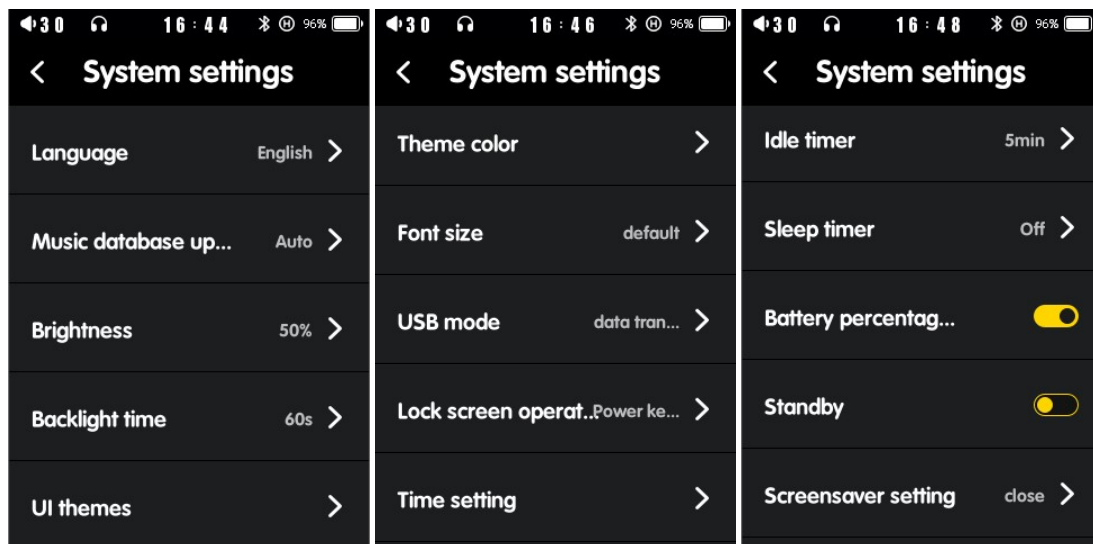
Bluetooth device, select audio quality, Bluetooth volume and so on .

Playback Setting

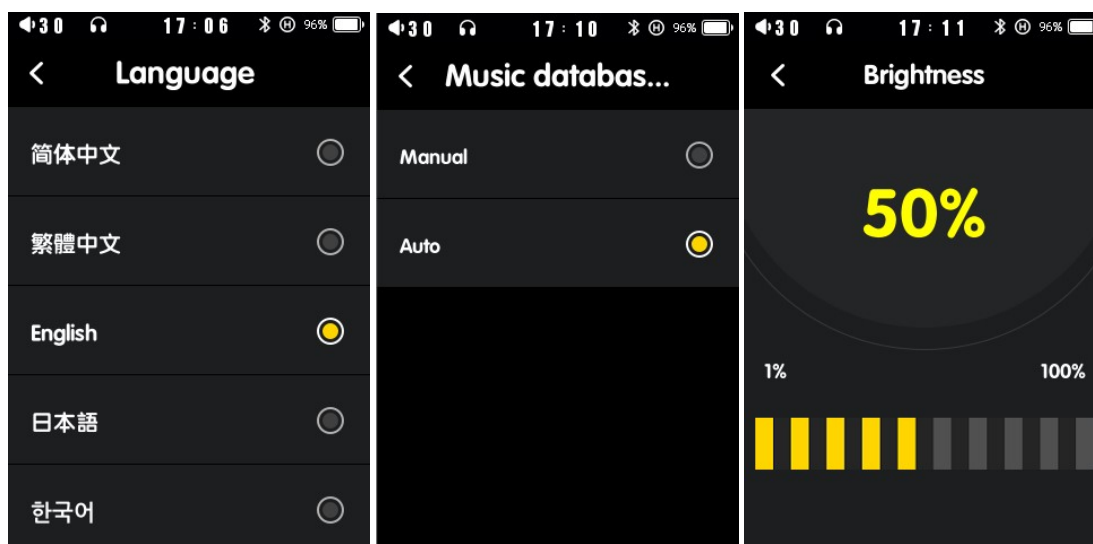


The playback setting is the function setting of music playback on the Machine, including: playback mode, EQ equalizer, DSD output mode, DSD gain compensation, power-off memory playback, seamless playback, maximum digital volume output, maximum volume limit Control, startup default volume, fade in and out , gain Settings, playback gain, LR sound Track balance, digital filter, folder hop, album hop and other Setting.

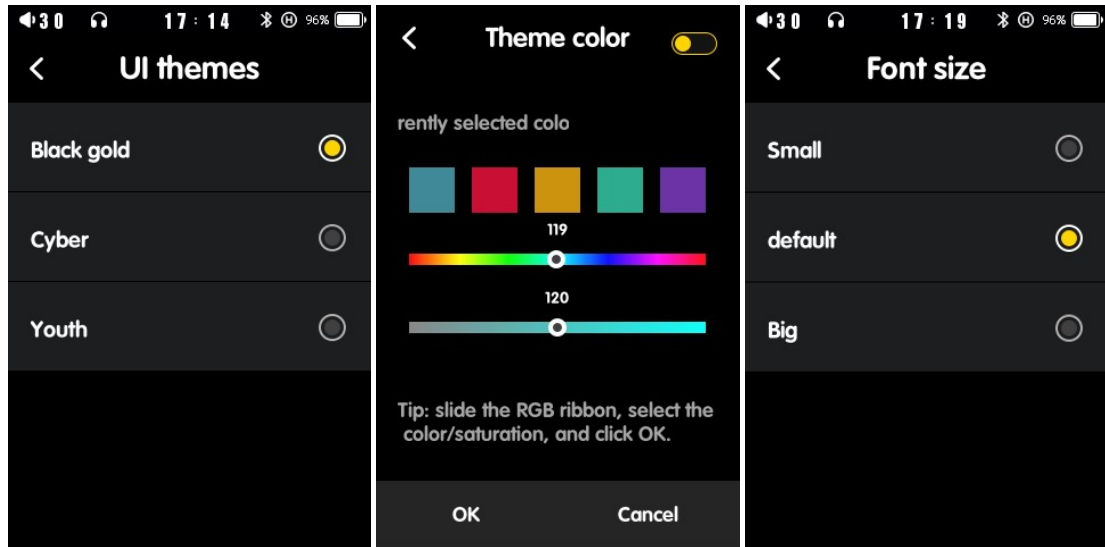
System setting



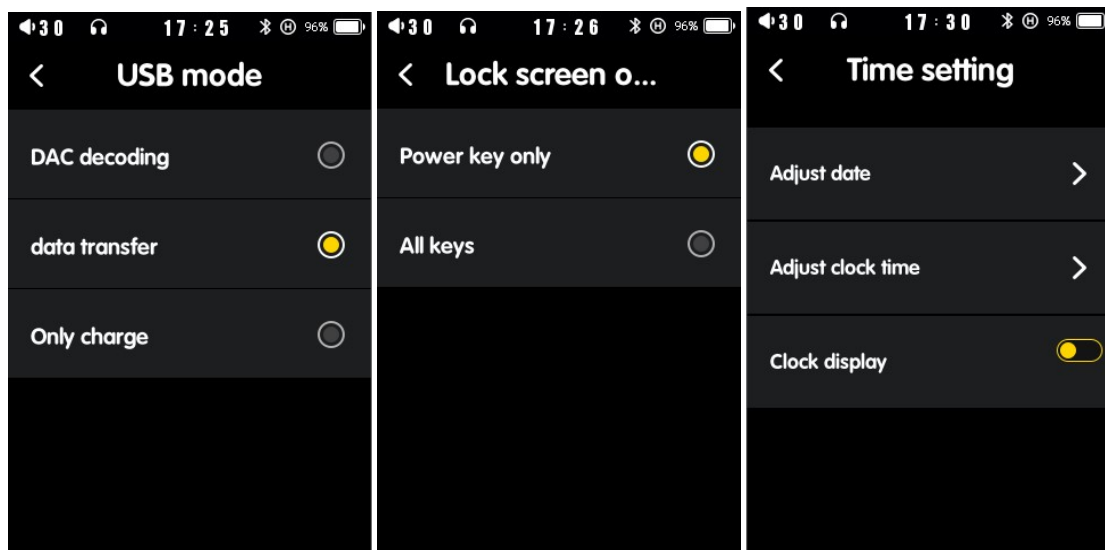
System Settings In the setting, you can set the language, music scan mode, backlight Brightness, backlight time, theme style, colorful theme, font size, USB mode Type, lock screen operation, time setting , power saving shutdown, sleep shutdown, battery power display Display, standby, screen saver Settings, factory restore, firmware upgrade and about the machine.



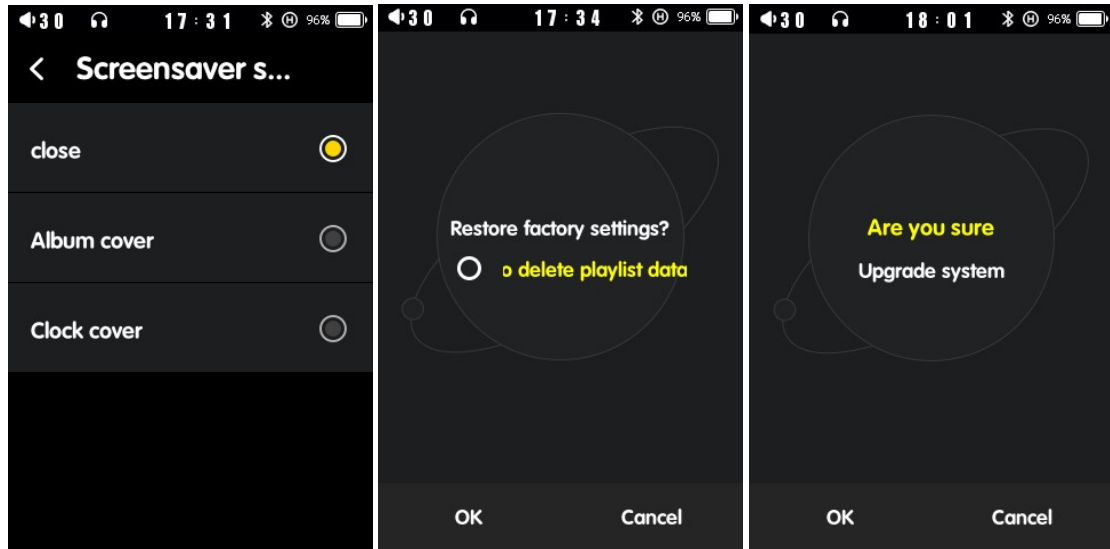
Language selection, music scan mode and backlight brightness Settings .



Theme style selection, colorful theme Settings and font size selection



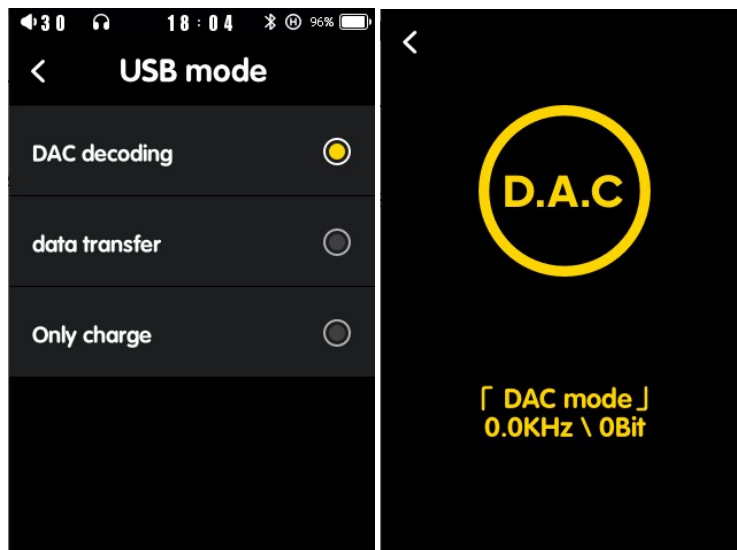
USB mode selection, lock screen key Settings and time Settings



Screensaver picture selection, factory restoration and firmware upgrade operations

How to Use USB-DAC

This player support USB-DAC function



1. Turn on the player, go to system setting, set USB mode at DAC decoding, and then connecting to PC, and then you can see PC shows "find new

hardware” , no need any operation, it will automatically install.

2. Then you will see “DAC” shows on device.

3. Insert earphone,you can hear music now.

Size	101.5mm*65mm*15mm (L*W*H)
Screen	3.5 吋 320X480 TFT
Power	2200mAH/3.7V Rechargeable Lion battery
	TYPE-C USB 5V2A Input
Supported Music file Format	APE (192KHz/24bit)
	WAV (384KHz/24bit)
	WMA (192KHz/24bit)
	Wma Lossless (96KHz/24bit)
	FLAC (192KHz/24 bit) ,
	DSF (11.28MHz/ 1bit)
	DFF (11.28MHz/ 1bit)
	Aiff、 M4A、 AAC、 OGG、 MP2 /MP3
Total Harmonic Distortion(THD)	3.5 Single-ended output <0.005% 2.5 Balances output <0.005%
Signal to Noise Ratio	<u>$\geq 118\text{dB}@1\text{KHz}$, $\pm 2\text{dB}$</u>
Frequency Response	20Hz–20KHz
Headphone Output Max	3.5mm 2Vrms/32 (L/R) 125mW
	2.5mm 4Vrms/32 (L/R) 400mW

Level	
Channel Separation	3.5mm Single-ended >70dB 2.5mm Balnces >90 dB
Dynamic Range	118dB \pm 2dB
Headphone Impedance	16 Ohm–300 Ohm
Analog Output	3.5mm Single-ended headset output
	2.5mm Balances headset output
Digital Output	SPDIF (USB-C Port)
USB C Port	USB2.0 Charging、data transter、 USB-DAC
Card Slot	TF Card \leq 512GB
Working temperature	32F–104F
Support	Windows XP/Vista、Win7/8.1、 Win10、Mac OS 10、Linux 2.4.2 above

FCC Requirement

Any changes or modifications not expressly approved by the party responsible for compliance could void the user's authority to operate the equipment.

This device complies with Part 15 of the FCC Rules. Operation is subject to the following two conditions:

(1) this device may not cause harmful interference, and(2) this device must accept any interference received, including interference that may cause undesired operation.

Note: This equipment has been tested and found to comply with the limits for a Class B digital device, pursuant to Part 15 of the FCC Rules. These limits are designed to provide reasonable protection against harmful interference in a residential installation. This equipment generates, uses, and can radiate radio frequency energy, and if not installed and used in accordance with the instructions, may cause harmful interference to radio communications. However, there is no guarantee that interference will not occur in a particular installation. If this equipment does cause harmful interference to radio or television reception, which can be determined by turning the equipment off and on, the user is encouraged to try to correct the interference by one or more of the following measures:

- Reorient or relocate the receiving antenna.
- Increase the separation between the equipment and receiver.
- Connect the equipment into an outlet on a circuit different from that to which the receiver is connected.
- Consult the dealer or an experienced radio/TV technician for help.