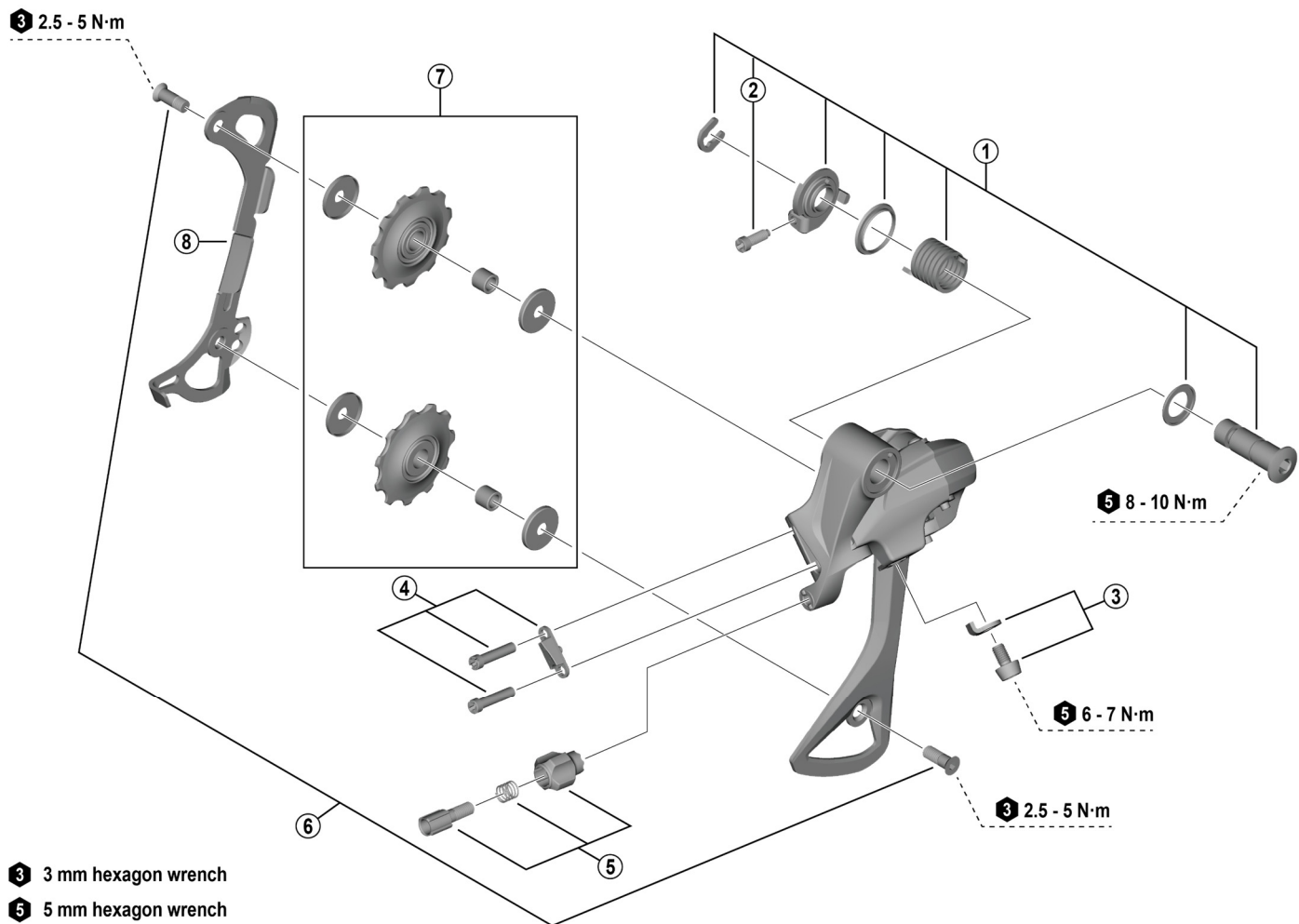


ACERA Rear Derailleur (8/7-speed)
RD-M3020 (SGS)



ITEM NO.	SHIMANO CODE NO.	DESCRIPTION	INTERCHANGE-ABILITY		
			RD-M3100	RD-T3000	
1	Y3J898010	B-axle assembly			
2	Y5Z0000D0	B-tension adjusting screw	B	A	
3	Y5PA98020	Cable fixing screw (M5 x 8.1) and plate	B	A	
4	Y5RL98020	Stroke adjusting screws (M4 x 13) and plate		A	
5	Y3J898020	Cable adjustment barrel unit			
6	Y5PA98060	Pulley screw 13.7 mm (2 pcs.)	A	A	
7	Y5FT98030	Tension and guide pulley set	A	A	
8	Y5XG10010	Inner plate		B	

A: Same parts.

B: Parts are usable, but differ in materials, appearance, finish, size, etc.

Absence of mark indicates non-interchangeability.

Specifications are subject to change without notice.

Torque information is listed.

Oct.-2023-4873A

© Shimano Inc. I

SHIMANO

