

HOW TO INSTALL AND ACTIVATE YOUR ESIM ON **SAMSUNG GALAXY**

Install before your trip and activate only at your destination.

1. INSTALLATION

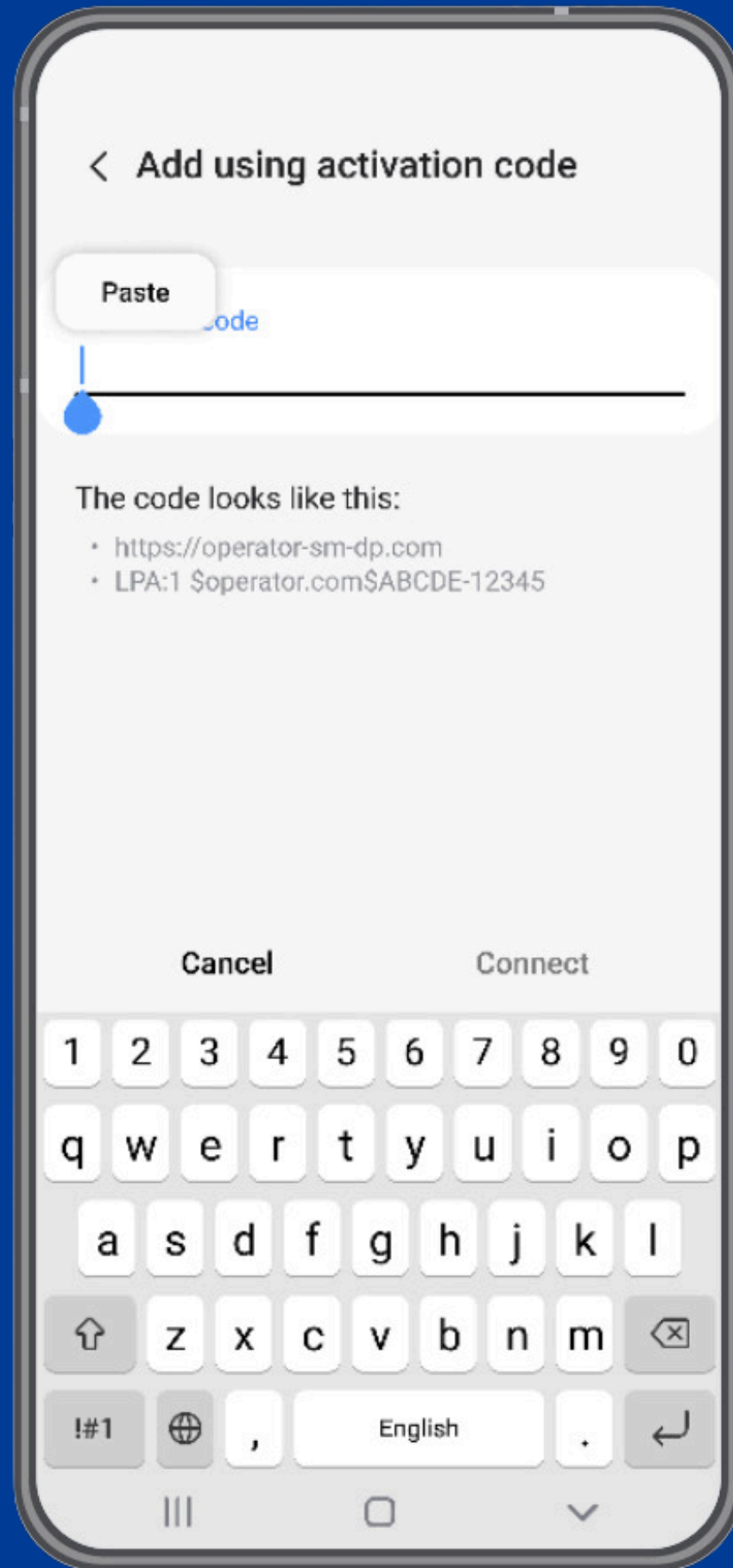
You can Install your eSIM manually by copying and pasting the installation codes we send you by mail or by scanning the QR code. For the latter, you must have it printed or on another device to scan it, Choose the best option for you.

You can install your eSIM:

1. Manually by copying and pasting the installation codes or
2. Scanning the QR code.

Both were sent to you in the same email. For the latter option, you must have it printed or on another device to scan it. Choose the best option for you.

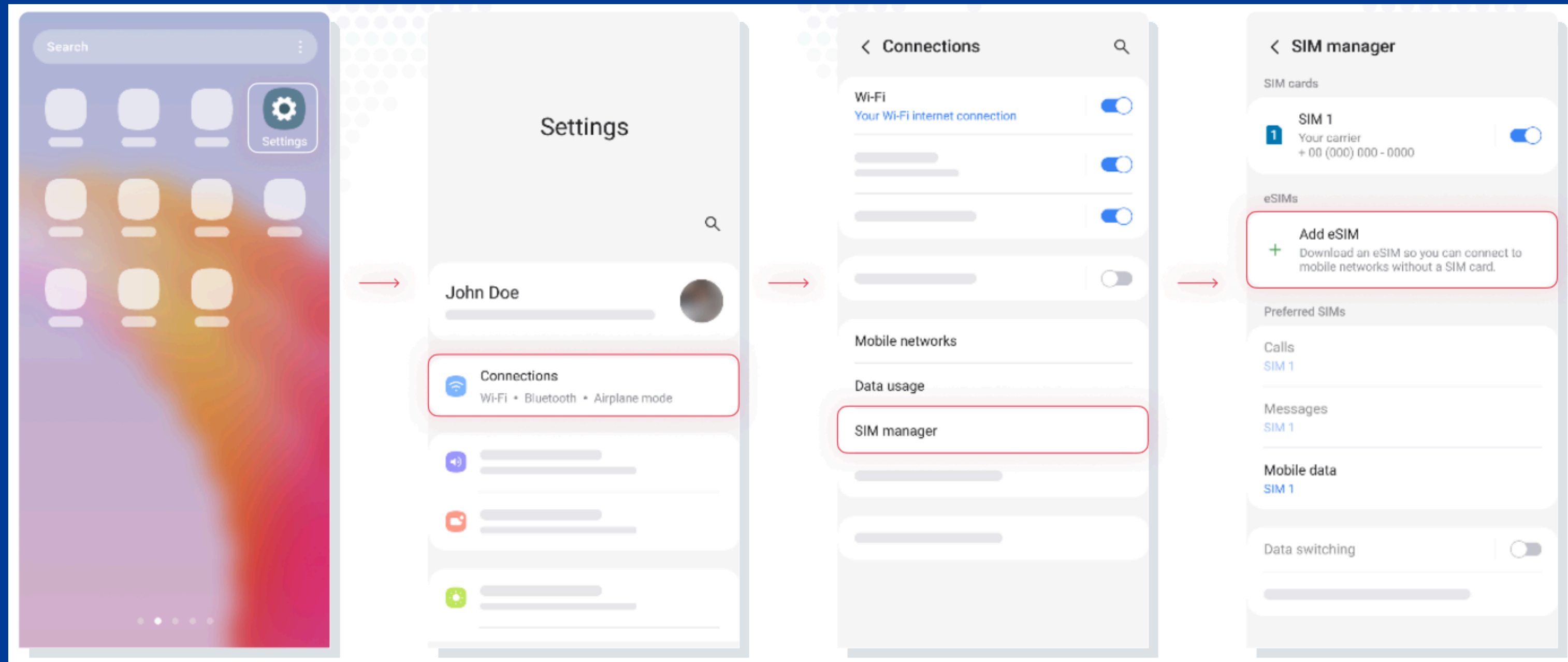
We recommend installing the eSIM before your trip the eSIM before your trip.



1.1. MANUAL INSTALLATION

You only have to copy and paste the codes we send you by mail.
This option is ideal when you do not have another device.

1.1. MANUAL INSTALLATION



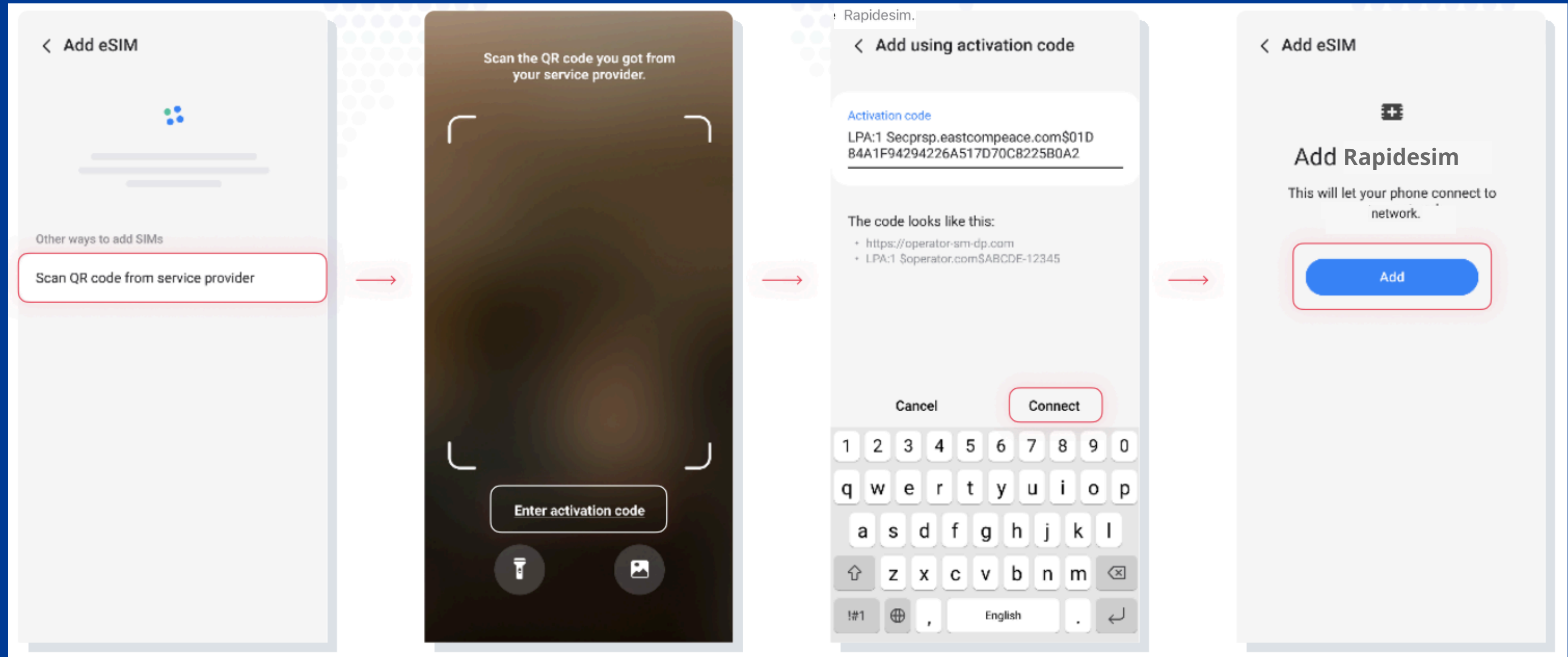
1. GO TO SETTINGS

2. CONNECTIONS

3. SIM MANAGER

4. TAP ADD ESIM

1.1. MANUAL INSTALLATION



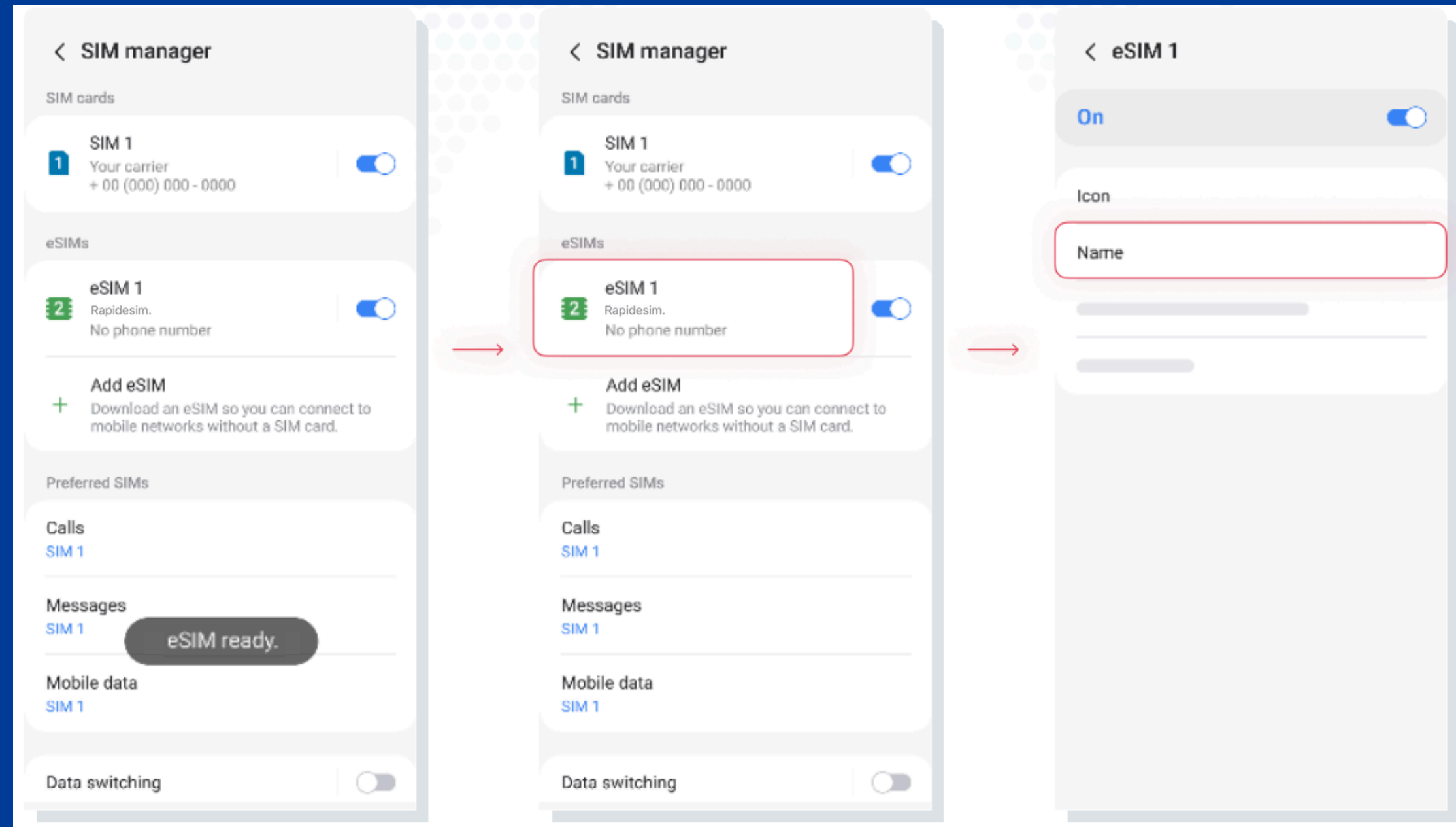
5. SCAN QR CODE FROM SERVICE PROVIDER

6. TAP ENTER ACTIVATION CODE

7. PASTE THE CODE WE SENT TO YOUR E-MAIL, AND TAP CONNECT

8. TAP ADD AND WAIT

1.1. MANUAL INSTALLATION



**9. THE INSTALLATION
IS **DONE****

**10. TAP ON YOUR
NEW **ESIM****

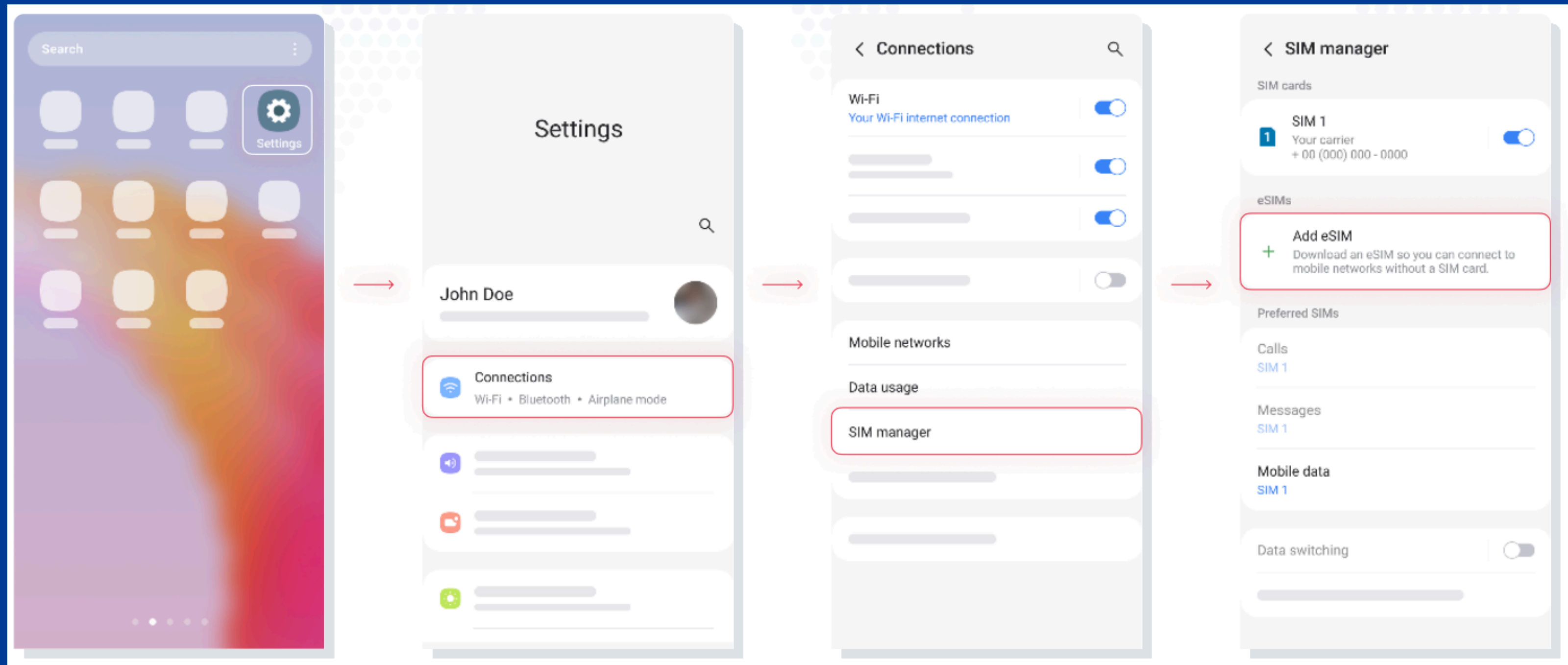
**11. TAP NAME AND RENAME
IT. WE RECOMMEND YOU TO
CALL IT, FOR EXAMPLE:
RAPIDESIM**

1.2. QR INSTALLATION

Choose this option if you have the QR code printed or on another device to scan it from your cell phone.



1.2. QR INSTALLATION



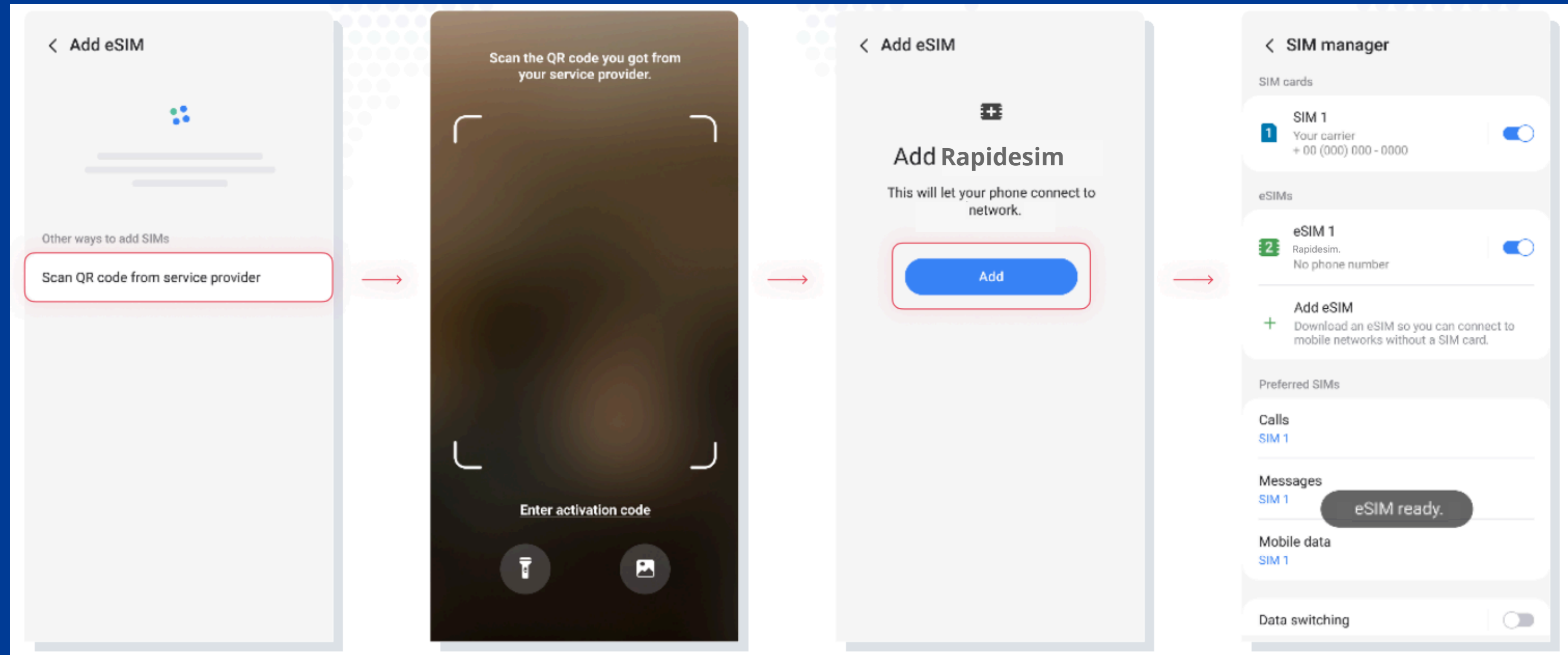
1. GO TO **SETTINGS**

2. **CONNECTIONS**

3. **SIM MANAGER**

4. TAP **ADD ESIM**

1.2. QR INSTALLATION



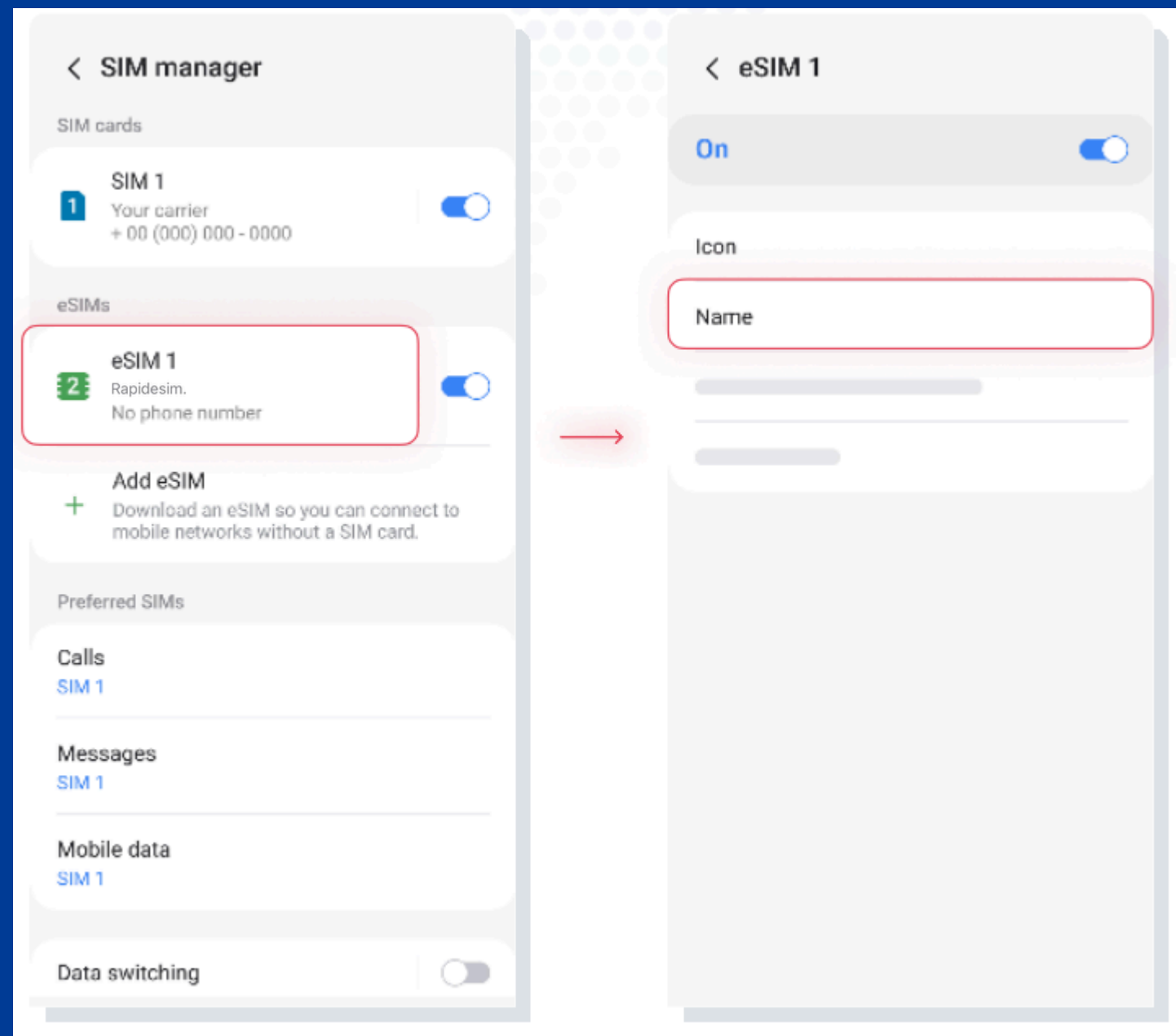
**5. SCAN QR CODE
FROM SERVICE
PROVIDER**

**6. SCAN THE CODE YOU
RECEIVED FROM
RAPIDESIM**

**7. TAP ADD AND
WAIT**

**8. THE INSTALLATION
IS DONE**

1.2. QR INSTALLATION

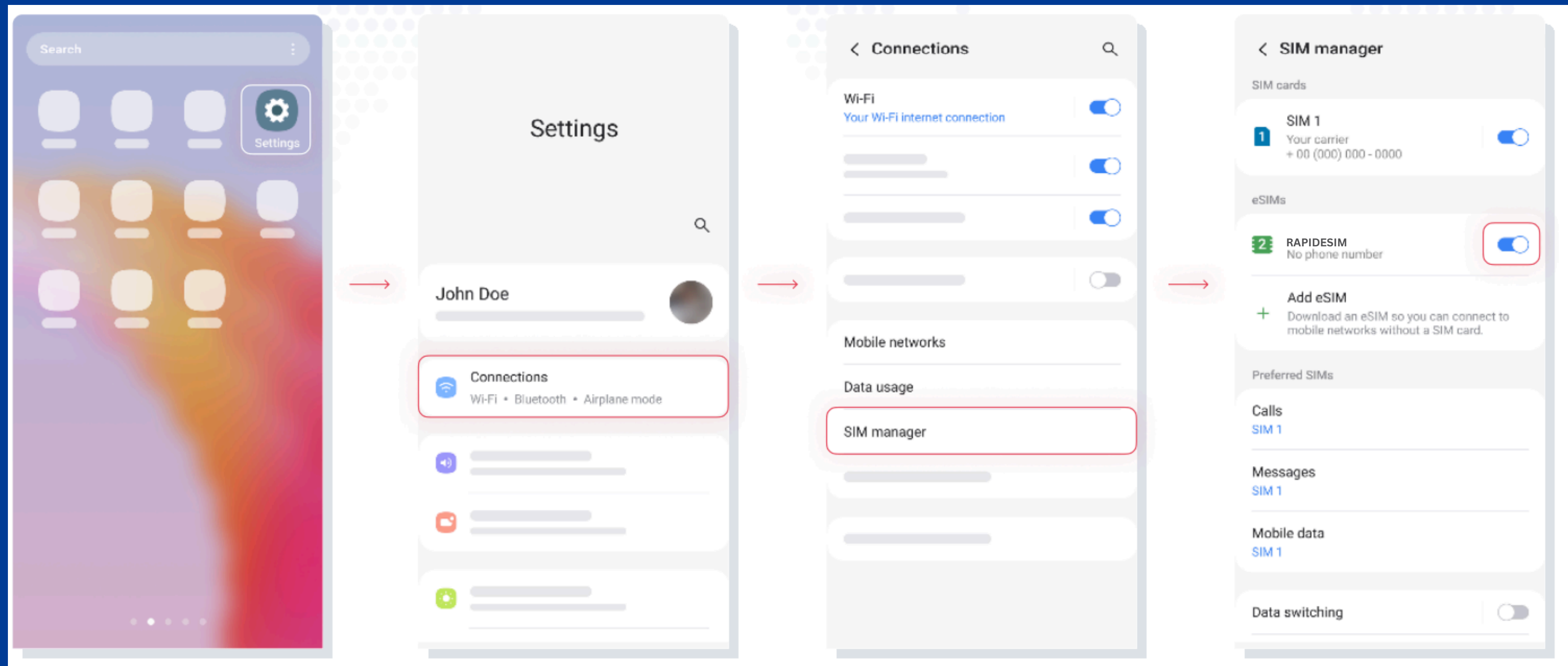


**9. TAP ON YOUR
NEW **eSIM****

**10. TAP NAME AND RENAME
IT. WE RECOMMEND YOU TO
CALL IT, FOR EXAMPLE:
RAPIDESIM**

2. ACTIVATION

Activate only at your destination

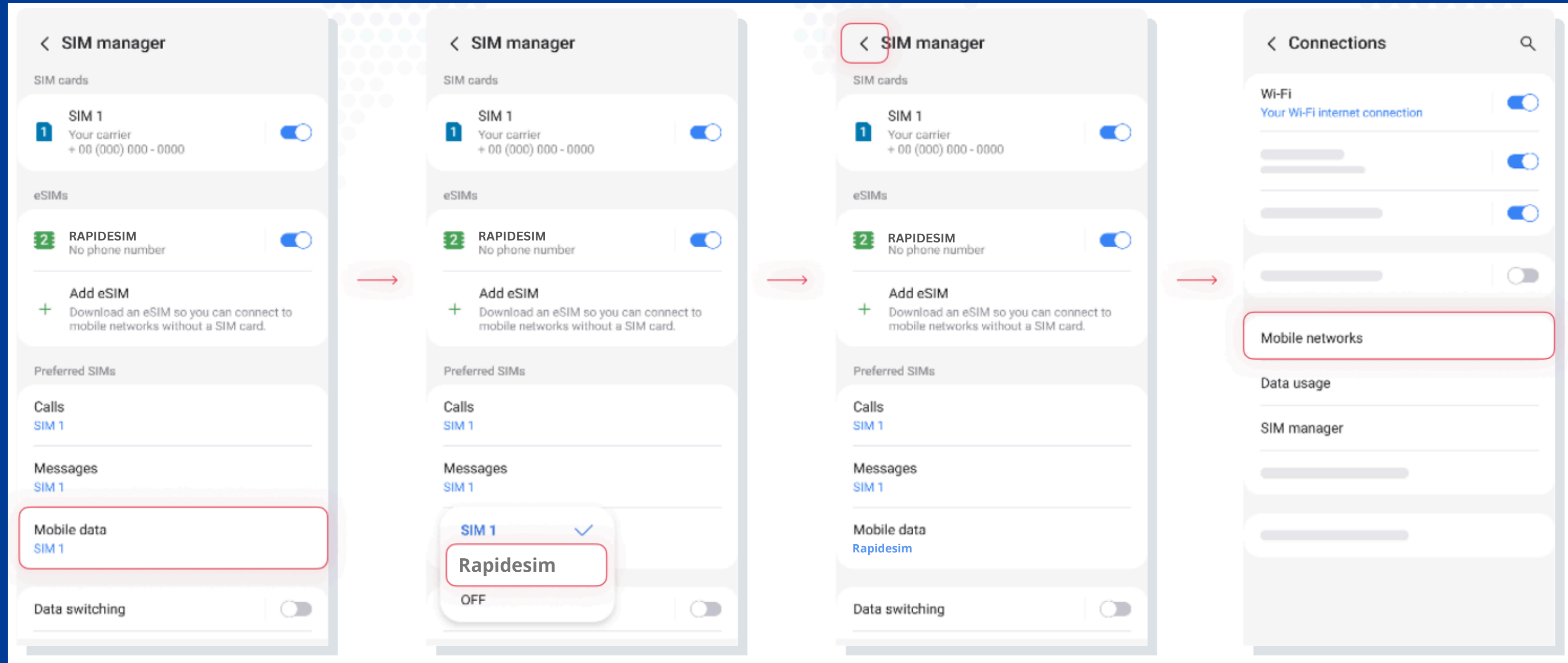


1. GO TO SETTINGS

2. CONNECTIONS

3. SIM MANAGER

**4. TURN ON YOUR
RAPIDESIM**

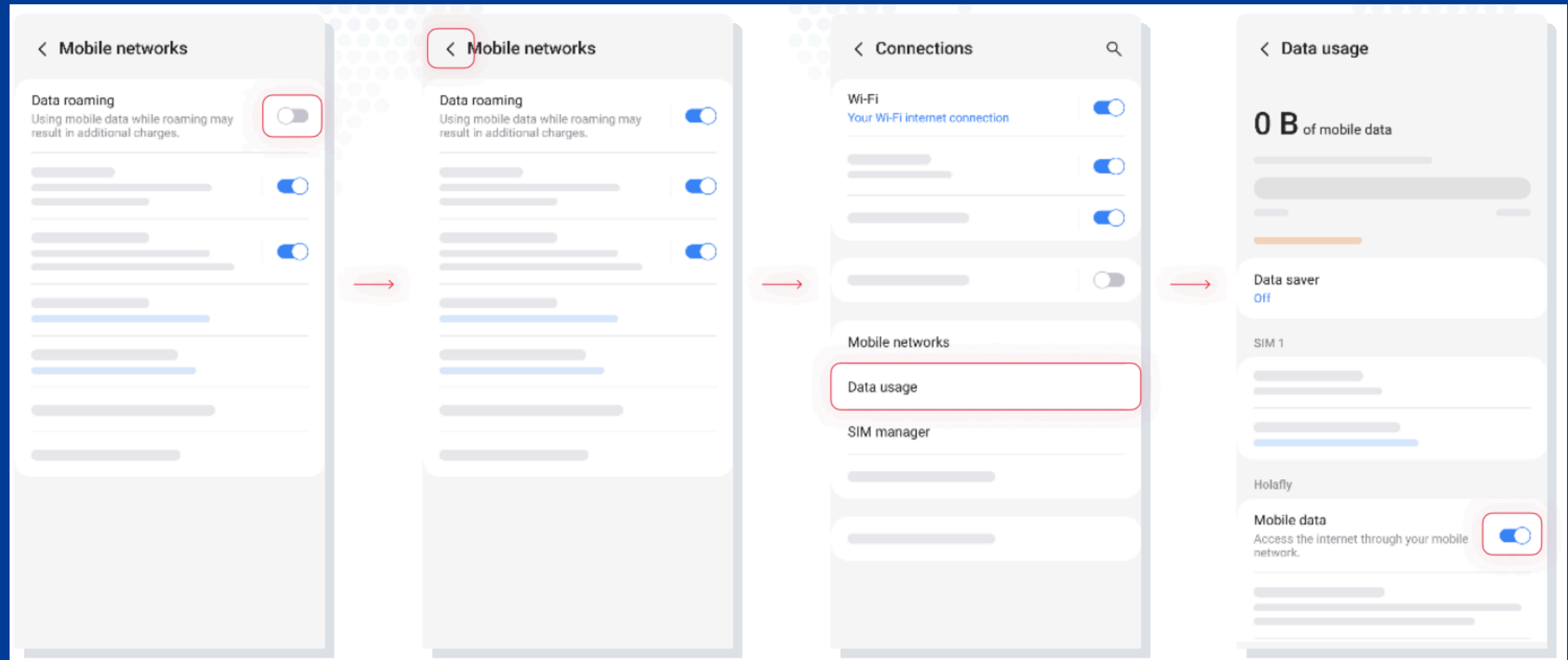


**5. TAP ON MOBILE
DATA**

6. SELECT **RAPIDESIM
AS YOUR SIM FOR
DATA.**

**7 GO BACK TO
CONNECTIONS**

**8. TAP ON MOBILE
NETWORKS**

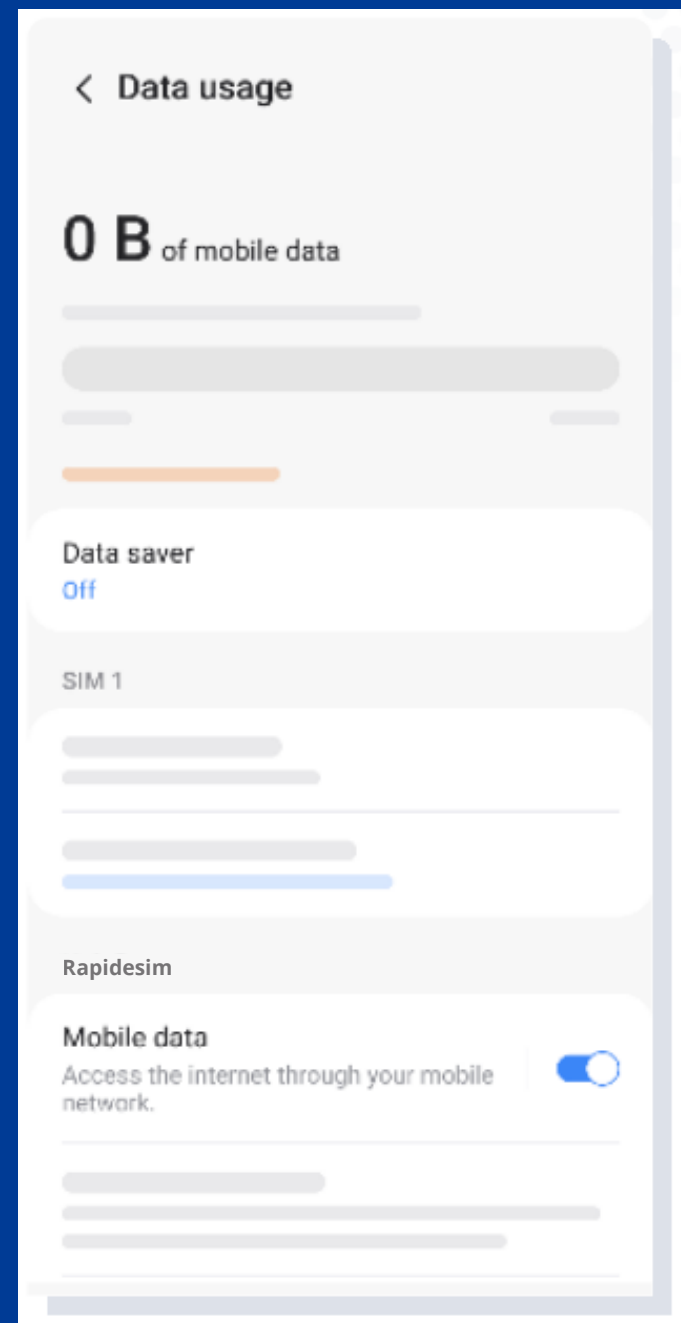


9. TURN ON DATA ROAMING

10. GO BACK TO CONNECTIONS

11. TAP ON DATA USAGE

12. MAKE SURE MOBILE DATA FOR RAPIDESIM IS ON



**13. THE ACTIVATION
IS DONE**

3. VERIFY YOUR CONNECTION

- One way is to verify that the signal icon on the top bar of your phone has at least one bar.
- Also, you can go to Settings --> Cellular and select your Rapidesim to verify that the Data Roaming toggle is on.

Can I install the eSIM without an internet connection?

To install the eSIM it is necessary that you have an Internet connection through a WI-FI network or cellular data that allows you to carry out the necessary configuration on your cell phone. For this reason, we recommend that you install it before you arrive at your destination.

Can I activate the eSIM without an internet connection?

To activate the aSIM, you do not need to have an Internet connection, since activating roaming or data roaming from your cell phone settings will activate the plan. We recommend that you activate it as soon as you arrive at your destination so as not to consume your data plan ahead of time.

Why do I need the internet to use the app?

You need to have an Internet connection because it is necessary to validate the data provided with third parties, and, so that you can see the consumption of your data plan.

BYE BYE ROAMING WELCOME RAPIDESIM

BUY NOW, USE LATER