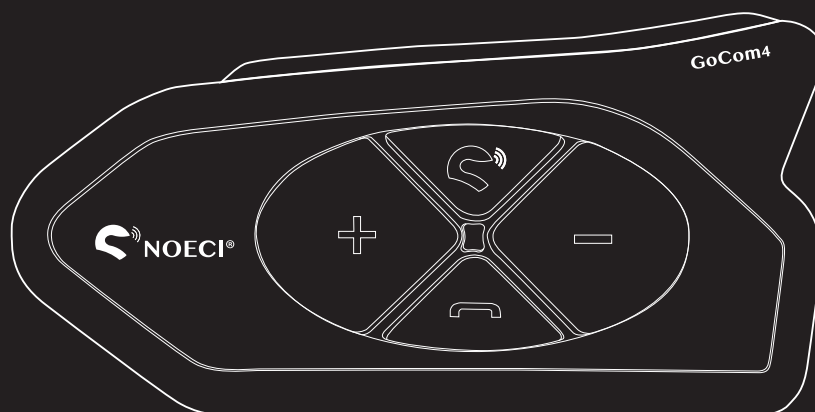




# GoCom4

## User Manual

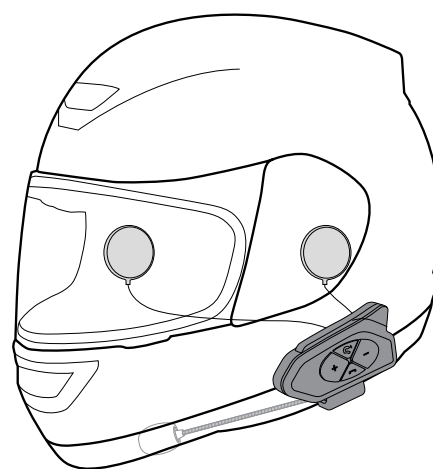
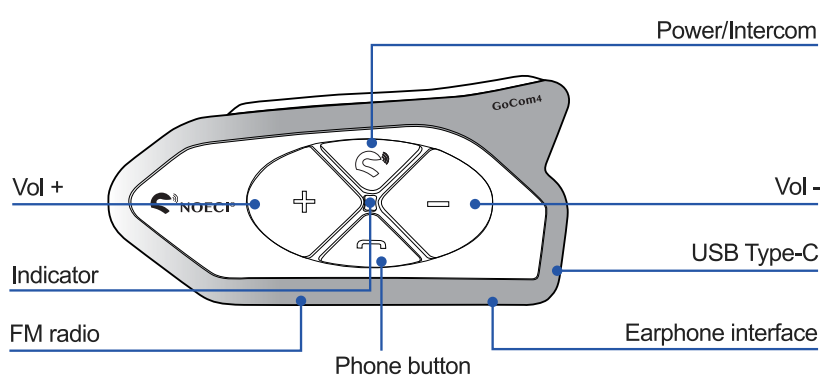


**MOTORCYCLE BLUETOOTH COMMUNICATION INTERCOM**

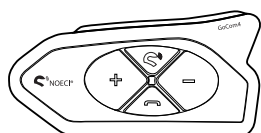


# 1. ABOUT

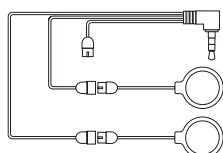
## 1.1 Product Details



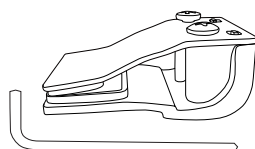
## 1.2 Package Contents



Headset Main Unit



HD Speaker



Helmet Clamp & Allen Wrench



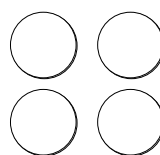
Charging cable



Wired Boom Mic



Wired Soft Mic

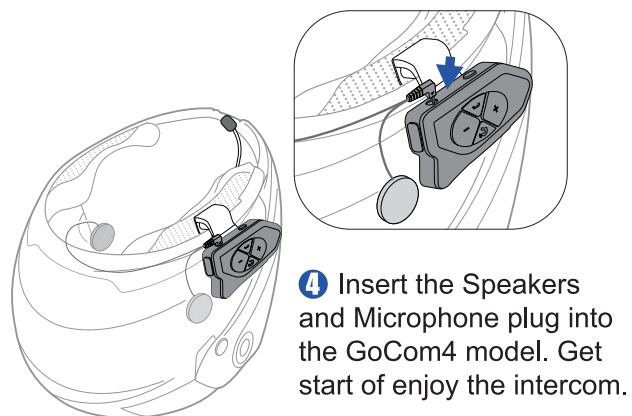
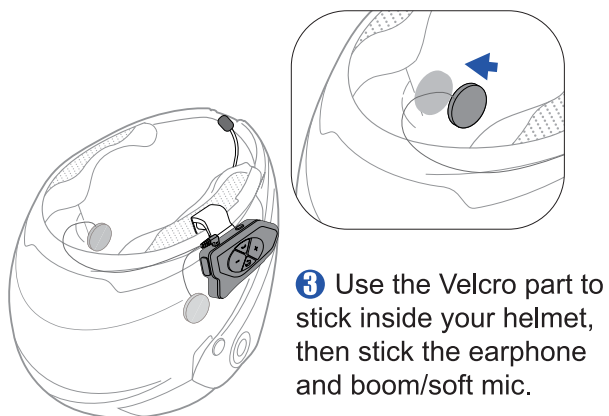
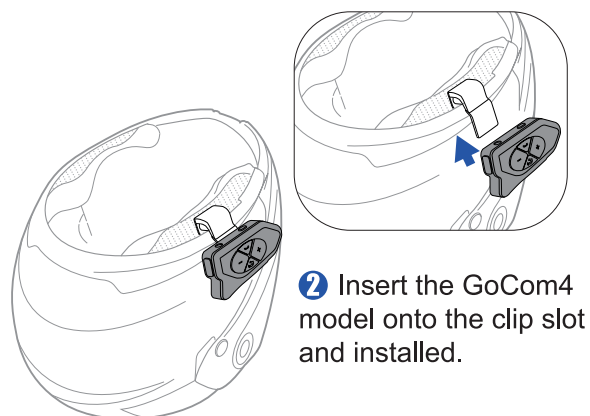
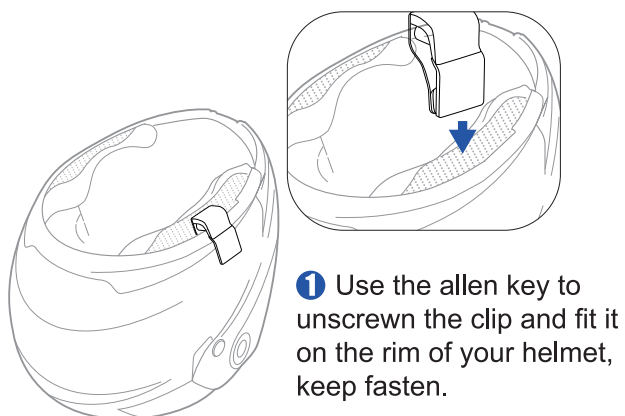


Velcro \* 4



User Manual

## 2. INSTALLATION



## 3. GET STARTED

### 3.1 Operation Instruction



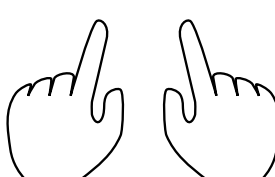
Single-click



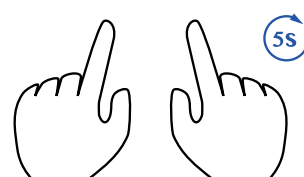
Double-click



1s Long Press

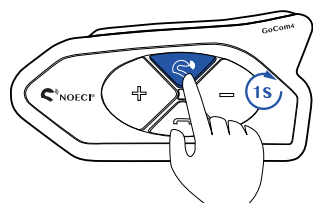


Press Simultaneously



5s Press Simultaneously

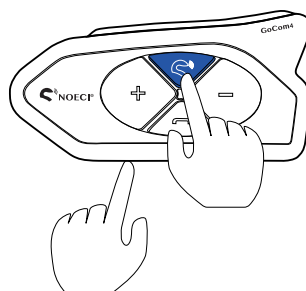
### 3.2 Power On/Off



**Power On**

? "Power on"

■ Blue light

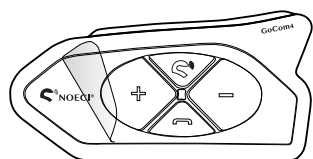


**Power Off**

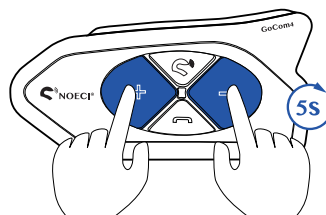
Press the "Power" and "FM" buttons simultaneously

■ Light off

### 3.2 Protective Film & Reset



Before using, you could tear-off the protective film on the front panel.



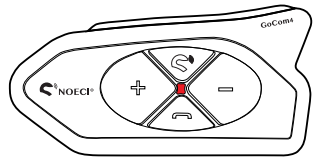
**Factory Reset**

Long press the "+" and "-" buttons at the same time for 5s.

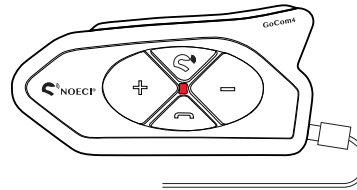
■ Red light last for 2s then Blue light on

## ENGLISH

### 3.3 Low Battery Indication/Charging Indication



■ Red light flashes twice each 2 mins



Charging

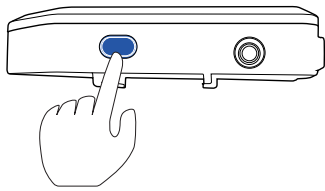
■ Red light always on

Full-charged

■ Light off

## 4 FM Radio On/Off & Station Switchable

When FM is on, it will automatically search the FM station. Intercom & FM could work at the same time.

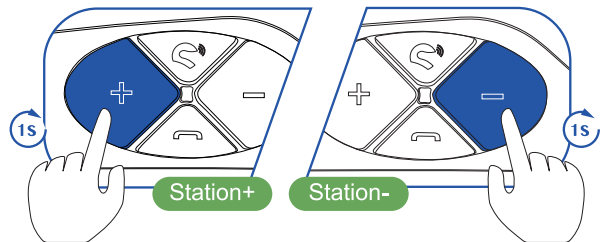


Single click to open the FM.

? "FM on"

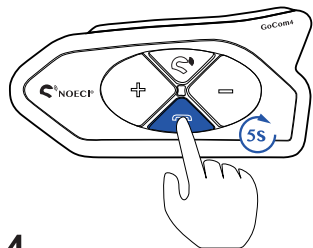
Click again to turn-off the FM.

? "FM off"



## 5 PHONE FUNCTIONS

### 5.1 Phone Pairing



Long-press the "Phone" button for 5s to enter the pairing mode.

? "Phone pairing"

■ Red & Blue lights quick flash

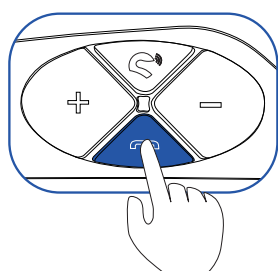


Open your cellphone Bluetooth, search and pair the "GoCom4".

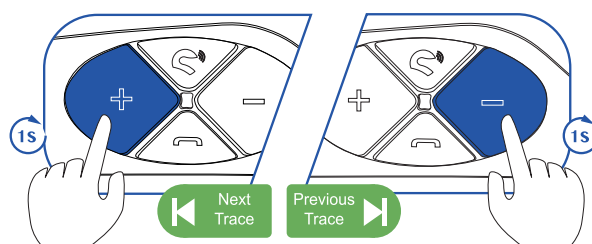
? "Pairing successful"

■ Blue light flashes slowly

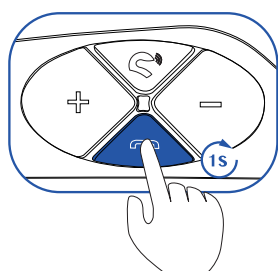
## 5.2 Music Playing



Single click the Phone button to play/pause the music.



## 5.3 Voice Assistant



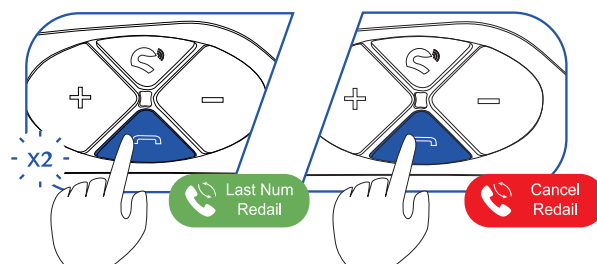
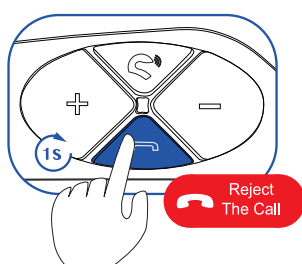
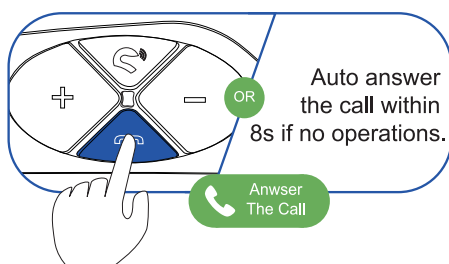
Press the "Phone" button for 1s to activate the Siri/Google assistant.



When voice assistant arosed, then talk to the mic.

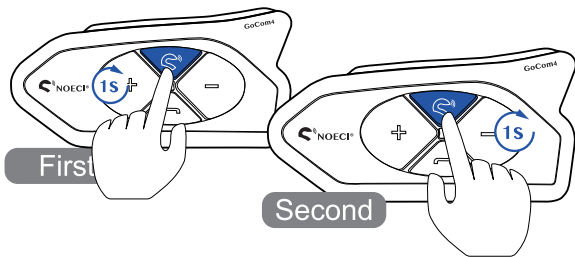


## 5.4 Phone Call Operations



## 6. INTERCOM PAIRING

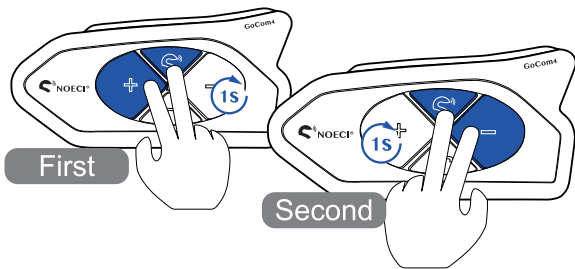
### 6.1 Two Intercom Pairing



**1** Long press the “Power” button for 1s to power on both GoCom4.

? “Power on”

■ Blue light



**2** After power on, long press the “Power” and “Vol+” buttons for 1s on the **First Intercom**, “Power” and “Vol-” buttons for 1s on the **Second Intercom**. Both GoCom4 will auto search and pair successfully.

? “Intercom A pairing”

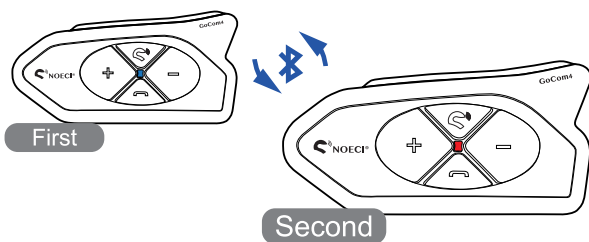
? “Intercom B pairing”

? “Pairing successful”

? “Pairing successful”

■ Red & Blue lights quick flash

■ Red & Blue lights quick flash



**3** When paired successfully, both models could start to communicate directly then.

If sounds pairing failed, reset both models and start from step 1.

? “Intercom A connected”

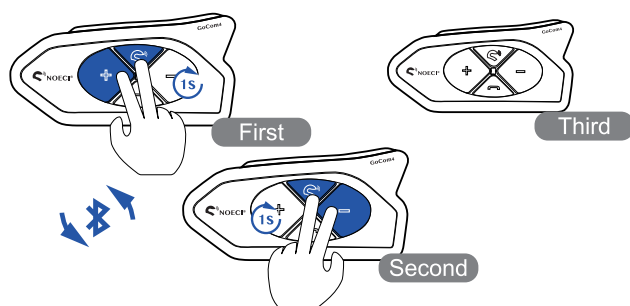
? “Intercom B connected”

■ Blue light flashes slowly

■ Red light flashes slowly

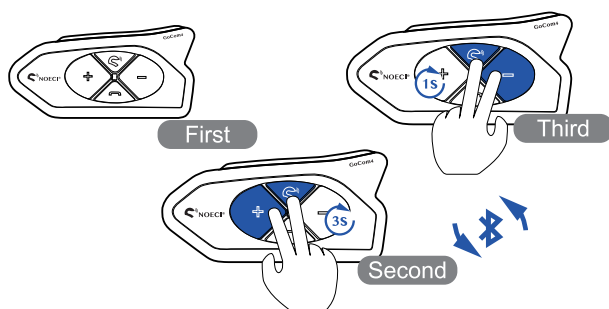


## 6.2 Three Intercom Pairing



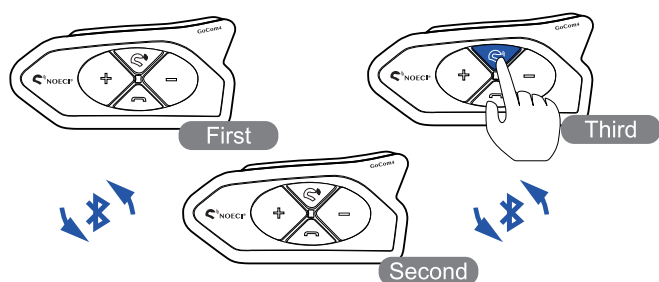
① Regard those three GoCom4 as the “**First**”, “**Second**” and “**Third**”. Long press the “Power” and “Vol+” buttons for 1s on the **First Intercom**, “Power” and “Vol-” buttons for 1s on the **Second Intercom**. Those two GoCom4 will auto search and pair successfully.

- |                             |                            |
|-----------------------------|----------------------------|
| ? “Intercom A pairing”      | ? “Intercom B pairing”     |
| ? “Pairing successful”      | ? “Pairing successful”     |
| ? “Intercom A connected”    | ? “Intercom B connected”   |
| ■ Blue light flashes slowly | ■ Red light flashes slowly |



② Long press the “Power” and “Vol+” buttons for 3s on the **Second Intercom**, “Power” and “Vol-” buttons for 1s on the **Third Intercom**. The Second and Third GoCom4 will auto search and pair successfully.

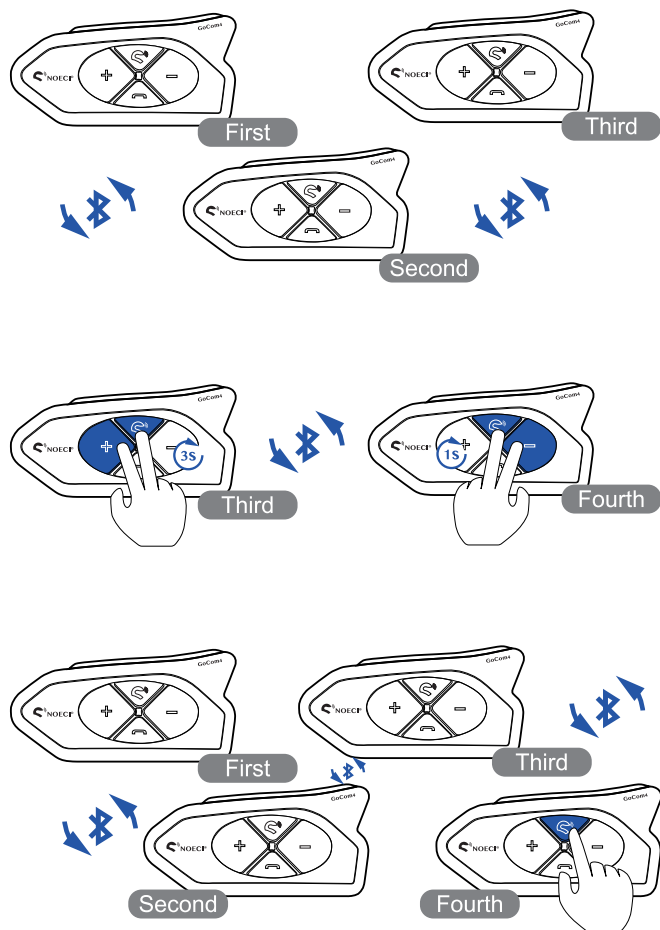
- |                             |                            |
|-----------------------------|----------------------------|
| ? “Intercom A pairing”      | ? “Intercom B pairing”     |
| ? “Pairing successful”      | ? “Pairing successful”     |
| ? “Intercom A connected”    | ? “Intercom B connected”   |
| ■ Blue light flashes slowly | ■ Red light flashes slowly |



③ Single-press the “Power” button of any GoCom4, those three intercoms will auto connect together then, you could get start the 3-way communication.

- First:** ■ Blue light flashes slowly  
**Second:** ■ Red & Blue lights flash alternately slowly  
**Third:** ■ Red light flashes slowly

## 6.3 Four Intercom Pairing



❶ Pair the “**First**”, “**Second**” and “**Third**” intercoms as the same steps as “**Three Intercom Pairing**”. No need to press the “Power” button on any GoCom4 to make a three-intercom group currently.

❷ Long press the “Power” and “Vol+” buttons for 3s on the **Third Intercom**, “Power” and “Vol-” buttons for 1s on the **Fourth Intercom**. The Third and Fourth GoCom4 will auto search and pair successfully.

? “Intercom A pairing”

? “Pairing successful”

? “Intercom A connected”

■ Blue light flashes slowly

? “Intercom B pairing”

? “Pairing successful”

? “Intercom B connected”

■ Red light flashes slowly

❸ Single-press the “Power” button of any GoCom4, those four intercoms will auto connect together, then you could get start the 4-way communication.

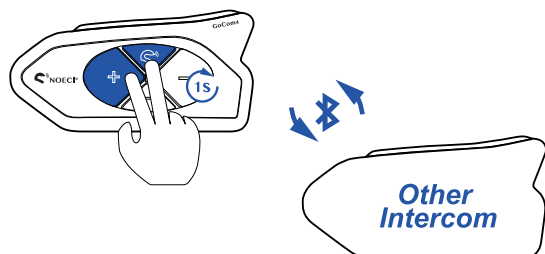
**First:** ■ Blue light flashes slowly

**Second:** ■ Red & Blue lights flash alternately slowly

**Third:** ■ Red & Blue lights flash alternately slowly

**Fourth:** ■ Red light flashes slowly

## 6.4 Pair with Other Intercom



1 Power on the GoCom4, long press the “Power” and “Vol+” buttons at the same time for 1s until the Red & Blue lights flash.

? “Intercom A pairing”

■ Red & Blue lights quick flash

2 Use your other Bluetooth intercom, enter the Bluetooth pairing mode.

3 The **GoCom4** will auto search the other intercom, and get connected for communication.

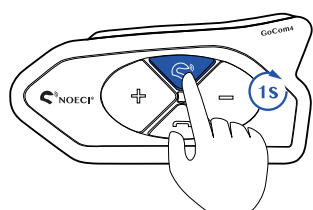
If can't be paired for many times, please contact your other model manufacturer if the model supports universal pairing.

? “Pairing successful”

? “Intercom A connected”

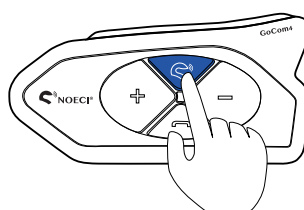
■ Blue light flashes slowly

## 6.5 Intercom Disconnection & Re-connection



Long-press the “Power” button for 1s, the currently intercom would be disconnected.

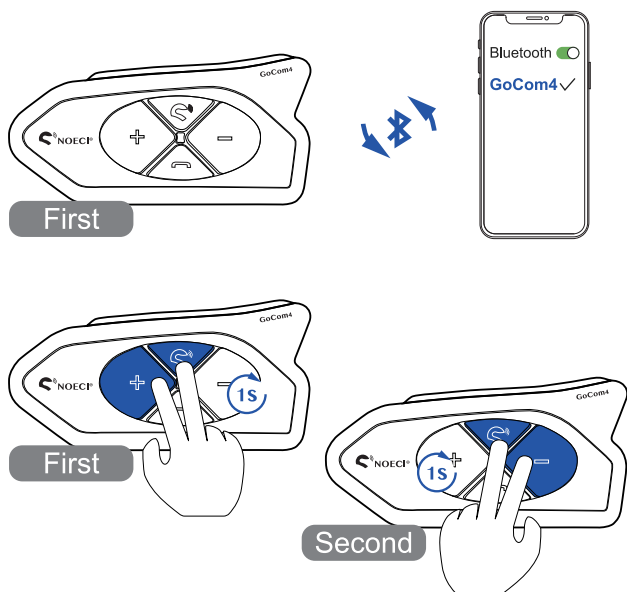
? “Intercom A disconnected”



After disconnected, single press the “Power” button, the currently intercom would be reconnected.

? “Intercom A connected”

## 7. INTERCOM & CELLPHONE MUSIC



❶ After the GoCom4 and cellphone already paired, long press the “Power” and “Vol-” buttons for 1s until the Red & Blue lights flash.

? “Intercom A pairing”

■ Red & Blue lights quick flash

❷ Pair with the other GoCom4 model, follow the same steps as “*Two Intercom Pairing*” to pair two GoCom4 together.

? “Intercom A connected”

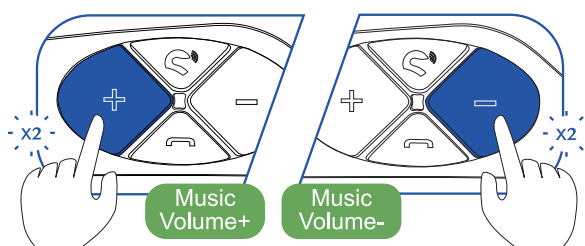
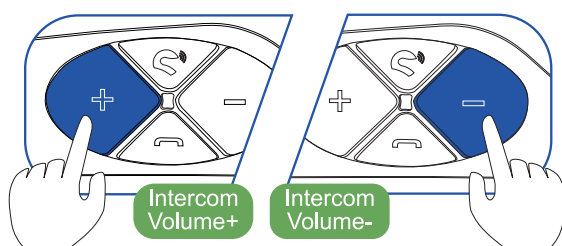
■ Blue light flashes slowly

? “Intercom B connected”

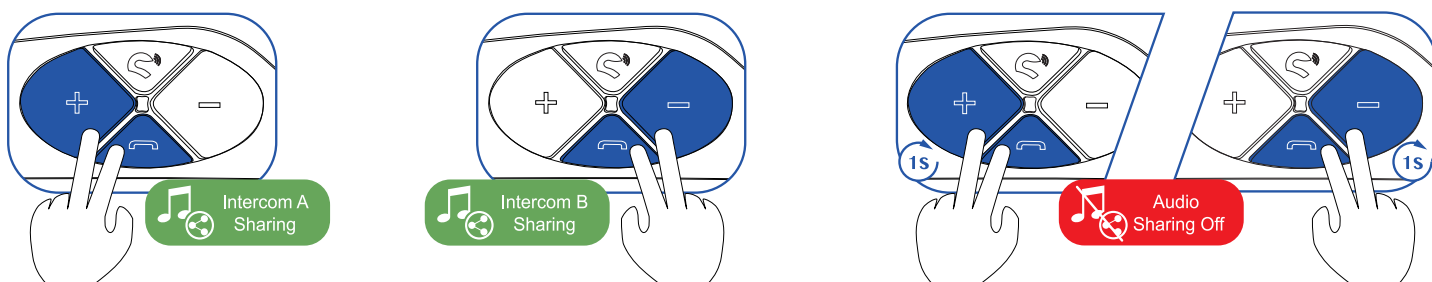
■ Blue light flashes slowly

❸ Now you could enjoy the intercom communication and cellphone music/navigation at the same time.

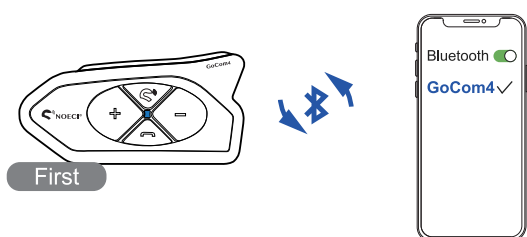
If you already connect the intercom at the beginning, you could disconnect the intercom first to pair with your cellphone, and reconnect back to enjoy intercom & cellphone music.



## 8. AUDIO SHARING (Ideally for driver and passenger)



### 8.1 Basic Sharing



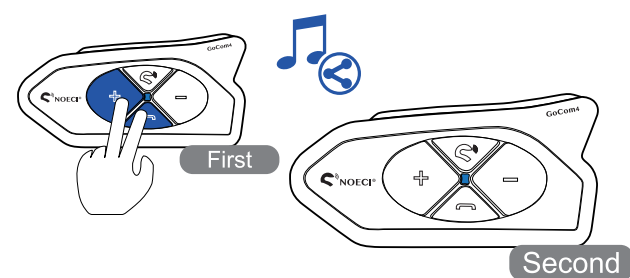
1 Pair one GoCom4 unit with your cellphone firstly. After paired, play the music or any other audio application on your cellphone.

? "Phone pairing"

? "Pairing successful"

■ Red & Blue lights quick flash

■ Blue light flashes slowly



2 Power on another GoCom4, pair two GoCom4 together, then press the "Vol+" and "Phone" buttons simultaneously on the **First Intercom**, it will start the audio sharing function. Once the **Second Intercom** hear "Audio share", both GoCom4 could enjoy the same music/audio.

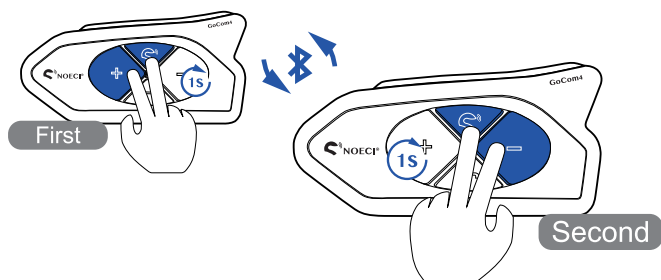
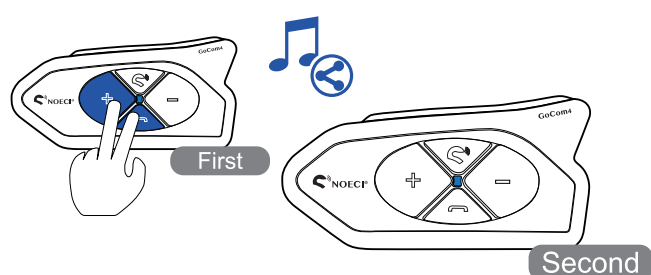
? "Audio share"

? "Du Du"

■ Blue light

■ Blue light

## 8.2 Audio Sharing & Two Intercom Talking



1 Follow the step of **8.1 Basic Sharing** to make two GoCom4 units audio sharing successful.

2 Follow the step of **6.1 Two Intercom Pairing** to pair both GoCom4 units and start intercom communication

When two units get intercom mode paired, the audio sharing functions would be paused, you shall press the "Phone" button again to play it.

? "Intercom A pairing"

? "Intercom B pairing"

? "Intercom A connected"

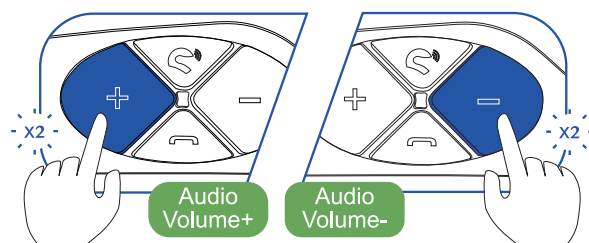
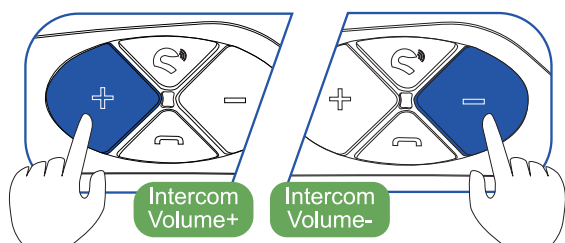
? "Intercom B connected"

■ Blue light flashes slowly

■ Red light flashes slowly

3 You could choose to pair the intercom talking at first, then pairing with your cellphone for audio sharing function.

The Audio Sharing function is not recommend using when four GoCom4 units group communication.



## 9. WARNING

The use of the device will impair your ability to hear other sounds and others around you.

Listening to music or speaking on a telephone may prevent you from hearing others around you and distract you from riding safely. The use of such device while riding may endanger you and others, and its use, in some areas, could not be allowed.

Using this device at a high volume may result in permanent hearing loss.

If you experience ringing in your ear or any other hearing related pain, reduce the volume or discontinue using this device. With continued use at high volume, your ears may become accustomed to the sound level, which may result in permanent damage to your hearing.

Please use this device at a safe volume level.

## 10. STATEMENT & WARRANTY

### 10.1 FCC Statement

Changes or modifications not expressly approved by the party responsible for compliance could void the user's authority to operate the equipment.

This equipment has been tested and found to comply with the limits for a Class B digital device, pursuant to part 15 of the FCC Rules. These limits are designed to provide reasonable protection against harmful interference in a residential installation. This equipment generates uses and can radiate radio frequency energy and, if not installed and used in accordance with the instructions, may cause harmful interference to radio communications. However, there is no guarantee that interference will not occur in a particular installation. If this equipment does caus harmful interference to

## ENGLISH

radio or television reception, which can be determined by turning the equipment off and on, the user is encouraged to try to correct the interference by one or more of the following measures:

- Reorient or relocate the receiving antenna.- Increase the separation between the equipment and receiver.
- Connect the equipment into an outlet on a circuit different from that to which the receiver is connected.
- Consult the dealer or an experienced radio/TV technician for help

Changes or modifications not expressly approved by the party responsible for compliance could void the user's authority to operate the equipment. This device complies with Part 15 of the FCC Rules. Operation is subject to the following two conditions:

- (1) this device may not cause harmful interference, and
- (2) this device must accept any interference received, including interference that may cause undesired operation

### 10.2 IC Statement

This device contains licence-exempt transmitter(s)/receiver(s) that comply with Innovation, Science and Economic Development Canada's licence-exempt RSS(s). Operation is subject to the following two conditions:

- (1) This device may not cause interference.
- (2) This device must accept any interference, including interference that may cause undesired operation of the device.

L'émetteur/récepteur exempt de licence contenu dans le présent appareil est conforme aux CNR d'Innovation, Sciences et Développement économique Canada applicables aux appareils radio exempts de licence. L'exploitation est autorisée aux deux conditions suivantes :



(1) L' appareil ne doit pas produire de brouillage;

(2) L' appareil doit accepter tout brouillage radioélectrique subi, même si le brouillage est susceptible d'en compromettre le fonctionnement.

### 10.2 Warranty

In normal use, one year warranty from the date of purchase. Any disassemble, modification will void the warranty.

## 11. ATTENTION

Installing equipment on the helmet is a modification of the helmet, which may cause the helmet's warranty to fail or hinder the helmet's function. This may cause danger in the event of accidents, so please fully understand the facts when using the helmet. If not, please return the product.

Before driving, please make sure that the product is firmly and correctly mounted on the helmet. If the product falls off during driving, it will cause injury or accident.

To ensure riding safety, please use this product carefully while on the road to avoid serious body injury, death or injury.

In order to ensure the communication distance when riding, please try to use it in an open place.

In the case of rain, please put the device jack down, USB rubber plug tight; During use, ensure that the headphone jack is fully plugged into the device to prevent water from entering the device.

The battery capacity will change with the temperature. When the battery is used at low temperature or below 0° C, the battery life of the product may attenuate to different degrees.

If the electronic function fails, please power off and try again.

## **ENGLISH**

When using this product when operating vehicles or vehicles, the safety precautions of the vehicle manufacturer must be observed.