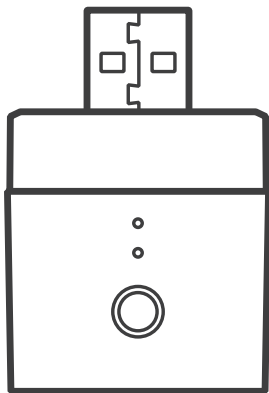


SONOFF

Micro

User manual V1.2



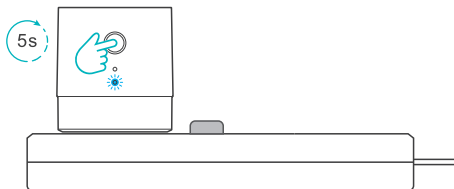
USB Smart Adapter

使用说明

1. 下载“易微联”App



2. 上电

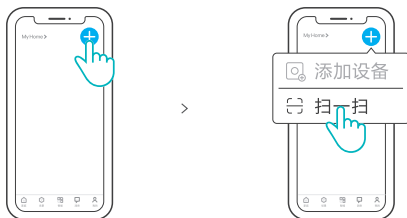


通电后, 长按设备按钮5秒, 直到Wi-Fi指示灯呈“快闪状态”松开, 此时设备进入配网模式。

⚠ 3分钟内没有进行配网, 设备将退出配网模式。如需再次进入, 请长按设备按钮5秒, 松开, 再次长按设备按钮5秒直到Wi-Fi指示灯呈“快闪状态”即可。

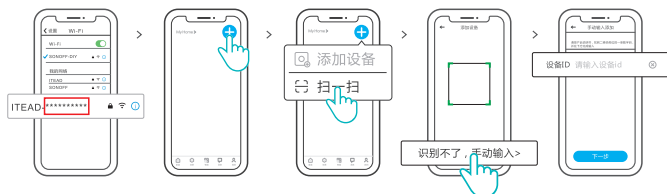
3. 添加设备

方法1: 扫码添加 (推荐)



点击“+”, 选择“扫一扫”, 再扫描设备上的二维码, 直接添加。

方法2:手动添加

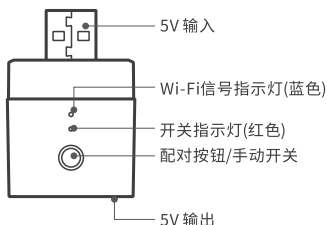


- ① 设备在配网模式下, 在移动设备找到Wi-Fi账号为:ITEAD-*****, 请记录好Wi-Fi账号后10位的数字码(数字码为设备唯一ID号)。
- ② 回到“易微联”app, 点击“+”, 选择“扫码添加”, 再点击屏幕下方“手动输入”最后输入记录好的设备ID号, 点击下一步等待添加完成。

产品参数

型号	Micro
输入	5V \equiv
输出	5V \equiv 2.5A
支持平台	Android & iOS
Wi-Fi	IEEE 802.11 b/g/n 2.4GHz
工作温度	-10°C~40°C
材料	PC V0
产品规格	31x26.5x33mm

产品介绍



Wi-Fi指示灯状态说明

状态	状态描述
快闪	配网模式
常亮	设备已连接
快闪一下	找不到路由
快闪两下	连接上路由，但没连上外网
快闪三下	升级中

产品特点

本设备是一款迷你便携的USB智能适配器，使USB设备智能化。您可以随时随地通过手机远程打开或关闭家里的设备，设置定时开关、分享给您的家人一起控制等等。



远程控制



智能定时/延时



语音控制



分享功能



同步状态



添加摄像头



上电状态设置



智能场景

恢复出厂设置

在eWeLink app端“删除设备”，设备即恢复出厂设置。

常见问题

问: 设备添加成功后, 显示离线, 无法控制?

答: 设备刚添加成功后, 需要1-2分钟时间连接您的路由器并连网。如果长时间还是显示不在线, 请根据Wi-Fi指示灯的状态来判断:

1. 蓝灯1秒快闪一下: 说明设备没有连上您的Wi-Fi。

- ① 可能是Wi-Fi密码输入不正确。
- ② 可能是设备离您的路由器太远, 信号太弱, 或环境有干扰。请先将设备靠近路由器, 如无改善, 重新添加一遍。
- ③ 设备不能识别5G的Wi-Fi, 请选择2.4G的Wi-Fi重新添加。
- ④ 检查您的路由器后台是否开启MAC地址过滤, 如有, 请关闭。

如果以上均尝试不能解决, 请用一部手机开启个人热点, 尝试重新添加。

2. 蓝灯1秒快闪两下: 说明设备已连接到了Wi-Fi但没有连上外网。

请确认您的Wi-Fi当前连接外网是否稳定、正常。如时好时坏, 频繁出现这种双闪情况, 说明您的网络不稳定, 并非产品原因, 如网络正常, 请断电进行重启。

产品中有害物质的名称及含量

部件名称	有害物质					
	铅 (Pb)	汞 (Hg)	镉 (Cd)	六价铬 (Cr (VI))	多溴联苯 (PBB)	多溴二苯醚 (PBDE)
塑料件	o	o	o	o	o	o
电子元器件	x	o	o	o	o	o
包装盒	o	o	o	o	o	o
PCB板	o	o	o	o	o	o
五金件	o	o	o	o	o	o

本表格依据SJ/T 11364的规定编制:

o: 表示该有害物质在该部件所有均质材料中的含量均在GB/T 26572规定的限量要求以下;
x: 表示该有害物质至少在该部件的某一均质材料中的含量超出GB/T 26572规定的限量要求。

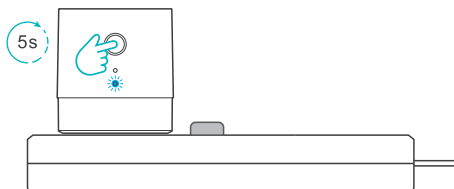
执行标准: GB 4943.1

Operation instruction

1. Download eWeLink App



2. Power on

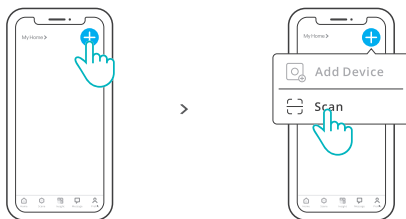


Long press the button for 5s on the device until the Wi-Fi LED indicator quickly flashes and release, then the device enters the pairing mode.

⚠ The device will exit the pairing mode if do not operate within 3mins. If you want to enter the pairing mode again, Long press the device button for 5s and release. Long press the device button for 5s again until the WiFi LED indicator is "flash quickly".

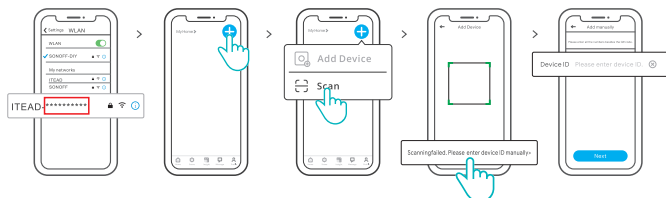
3. Add the device

Method 1: Scan the code to add (recommended)



Tap "+" and select "Scan" to add the device by scanning the QR code on the device.

Method 2: manual to add

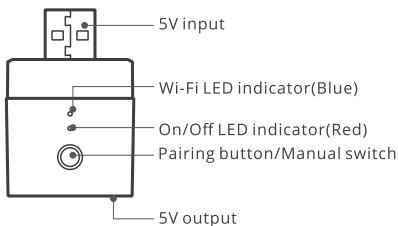


- ① Set the device to the pairing mode, and find the Wi-Fi SSID with ITEAD-***** on your mobile phone, and save last 10 digital codes (The digital code is the unique ID of the device)
- ② Go back to “eWeLink” App, tap “+”, select “Scan QR code”, then tap the word “Scanning failed. Please enter device ID manually” on the bottom and save the device ID, tap “Next” and wait until the adding is successful.

Specifications

Model	Micro
Input	5V \equiv
Output	5V \equiv 2.5A
Operating systems	Android & iOS
Wi-Fi	IEEE 802.11 b/g/n 2.4GHz
Working temperature	-10°C ~ 40°C
Material	PC V0
Dimension	31x26.5x33mm

Product Introduction



Wi-Fi LED indicator status instruction

LED indicator status	Status instruction
Blue light flashes quickly	Pairing mode
Blue light is always on	Device is connected successfully
Blue light flashes quickly once	Unable to find the router
Blue light flashes quickly twice	Successfully connect to the router but Wi-Fi is not connected
Blue light flashes quickly three times	Upgrading

Features

Micro is a portable mini USB smart adaptor that makes your USB devices smart. You can remotely turn on/off the connected devices of your home anywhere, schedule it on/off and share it with your family to control together.



Remote Control



Single/Countdown Timing



Voice Control



Share Control



Sync Status



Camera Linking



Power-on State



Smart Scene

Factory Reset

Deleting the device on the eWeLink app indicates you restore it to factory setting.

Common Problems

Q: Why my device stays "Offline"?

A: The newly added device needs 1 – 2mins to connect Wi-Fi and network. If it stays offline for a long time, please judge these problems by the blue Wi-Fi indicator status:

1. The blue Wi-Fi indicator quickly flashes once per second, which means that the switch failed to connect your Wi-Fi:
 - ① Maybe you have entered a wrong Wi-Fi password.
 - ② Maybe there's too much distance between the switch your router or the environment causes interference, consider getting close to the router. If failed, please add it again.
 - ③ The 5G Wi-Fi network is not supported and only supports the 2.4GHz wireless network.
 - ④ Maybe the MAC address filtering is open. Please turn it off.

If none of the above methods solved the problem, you can open the mobile datanetwork on your phone to create a Wi-Fi hotspot, then add the device again.

2. Blue indicator quickly flashes twice per second, which means your device has connected to Wi-Fi but failed to connect to the server.

Ensure steady enough network. If double flash occurs frequently, which means you access an unsteady network, not a product problem. If thenetwork is normal, try to turn off the power to restart the switch.

FCC compliance statement

Changes or modifications not expressly approved by the party responsible for compliance could avoid the user's authority to operate the equipment.

This device complies with part 15 of the FCC Rules. Operation is subject to the following two conditions: (1) This device may not cause harmful interference, and (2) this device must accept any interference received, including interference that may cause undesired operation.

FCC Radiation Exposure Statement:

This equipment complies with FCC radiation exposure limits set forth for an uncontrolled environment. This equipment should be installed and operated with minimum distance 20cm between the radiator & your body. This transmitter must not be co-located or operating in conjunction with any other antenna or transmitter.

Note:

This equipment has been tested and found to comply with the limits for a Class B digital device, pursuant to part 15 of the FCC Rules. These limits are designed to provide reasonable protection against harmful interference in a residential installation. This equipment generates, uses and can radiate radio frequency energy and, if not installed and used in accordance with the instructions, may cause harmful interference to radio communications. However, there is no guarantee that interference will not occur in a particular installation. If this equipment does cause harmful interference to radio or television reception, which can be determined by turning the equipment off and on, the user is encouraged to try to correct the interference by one or more of the following measures:

- Reorient or relocate the receiving antenna.
- Increase the separation between the equipment and receiver.
- Connect the equipment into an outlet on a circuit different from that to which the receiver is connected.
- Consult the dealer or an experienced radio/TV technician for help.

SAR Warning

Under normal use of condition, this equipment should be kept a separation distance of at least 20 cm between the antenna and the body of the user.

Dans des conditions normales d'utilisation, cet équipement doit être maintenu à une distance d'au moins 20 cm entre l'antenne et le corps de l'utilisateur.

WEEE Disposal and Recycling Information



All products bearing this symbol are waste electrical and electronic equipment (WEEE) as in directive 2012/19/EU which should not be mixed with unsorted household waste. Instead, you should protect human health and the environment by handing over your waste equipment to a designated collection point for the recycling of waste electrical and electronic equipment, appointed by the government or local authorities. Correct disposal and recycling will help prevent potential negative consequences to the environment and human health. Please contact the installer or local authorities for more information about the location as well as terms and conditions of such collection points.

EU Declaration of Conformity

Hereby, Shenzhen Sonoff Technologies Co., Ltd. declares that the radio equipment type Micro is in compliance with Directive 2014/53/EU. The full text of the EU declaration of conformity is available at the following internet address:

<https://sonoff.tech/compliance/>.

For CE Frequency

EU Operating Frequency Range

Wi-Fi: 802.11 b/g/n20 2412-2472 MHz

802.11 n40: 2422-2462 MHz

EU Output Power

Wi-Fi 2.4G≤20dBm

Scatola	Manuale
PAP 21	PAP 22
Carta	Carta
RACCOLTA DIFFERENZIATA	
Verifica le disposizioni del tuo Comune. Separa le componenti e conferiscile in modo corretto.	



Shenzhen Sonoff Technologies Co., Ltd.

1001, BLDG8, Lianhua Industrial Park, shenzhen, GD, China
ZIP code: 518000

Website: sonoff.tech

Service email: support@itead.cc

MADE IN CHINA

