



## Cycle Timer Plug Model No.:T319

### Safety Use & Care

- ◆ Do not exceed the maximum load current of 15A (approximately 1800W) by plugging in appliances that require a higher load current. Always check the electrical power rating of your appliance before using it with the timer.
- ◆ Household use only. Keep out of reach of children.
- ◆ Only use indoors, in a dry location. Always keep away from water or other liquids.
- ◆ DO NOT attempt to repair, disassemble or modify under any circumstances.
- ◆ Heaters, pet feeders and similar appliances should never be left unattended during use. Please check the working status of such appliances regularly when used with the timer.

### FAQ and Trouble Shooting

**Q1.** Why the product box and(or) the screen of timer is damaged upon arrival?

**A1.** Usually this is due to rough handling during transit. Please contact us for replacement or refund if the timer is defective.

**Q2.** Why there are scratches on the screen?

**A2.** There's a transparent screen protector on the display. It's mainly for screen protection during production and transit. It's normal to have a few slight scratches on it. You can peel it off the screen or just keep it.

**Q3.** Why the timer turns on at the set on time, but the appliance remains off?

**A3.** Please test your appliance to see if it is compatible with the timer. To test, plug your appliance directly into a live socket and turn it on; keep the ON/OFF switch of the appliance turned on and remove its plug from the socket, and then plug it back into the socket again. Under this circumstance, if the appliance automatically comes on, it is compatible with the timer; otherwise, it is not. Also, make sure that the ON/OFF switch of your appliance is always turned on when it is used with the timer. Sometimes, this situation may also occur when the voltage of the AC power source is too low.

**Q4.** How to maintain the internal battery?

**A4.** If not in regular use, please plug the timer into a live socket to charge for about 24 hours every 30 days to maintain the internal battery.

**Q5.** What should I do if I am having trouble using my timer?

**A5.** If you have any problem with this timer, please contact us via email, provide us with your Amazon Order ID and describe your issue. Usually, we will reply within 24 hours.

**Q6.** Do you sell this product in bulk and what's the minimum order quantity(MOQ)?

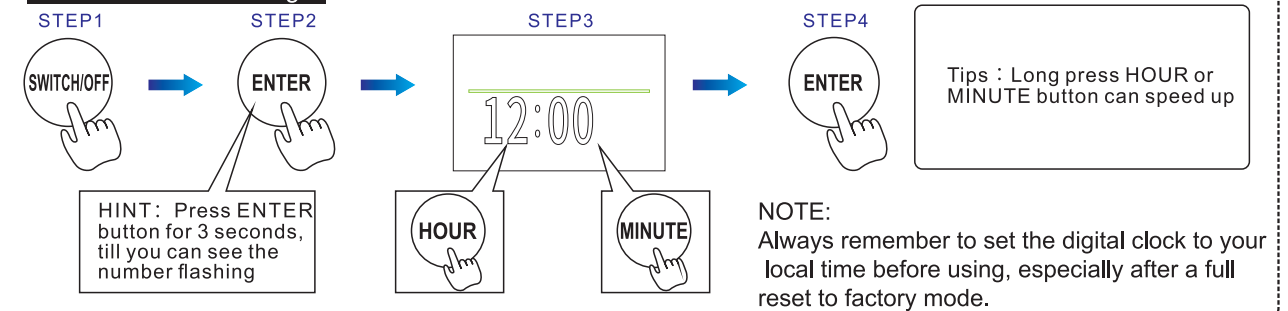
**A6.** Yes, we do sell this product in bulk. The MOQ is 200 pcs. We offer FOB prices, and shipment is from China. Please contact us via email for bulk purchase.

## User's manual

This timer do not have am/pm(12 hour mode), and it cannot set the day of the week.

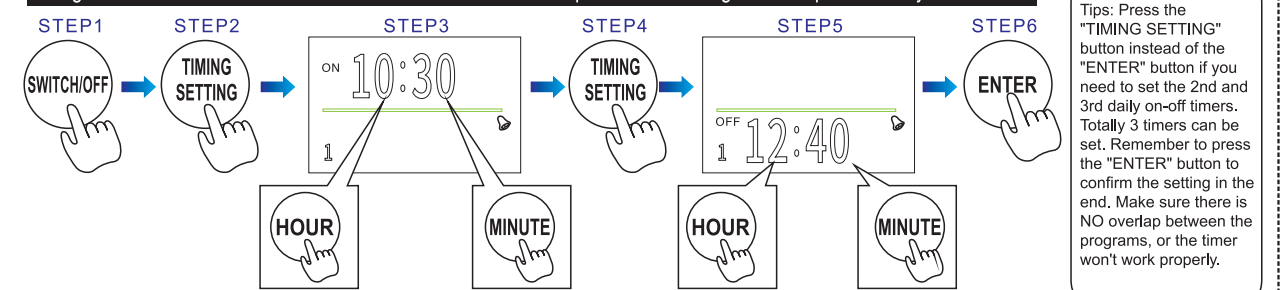
### Clock setting

( Current time setting )



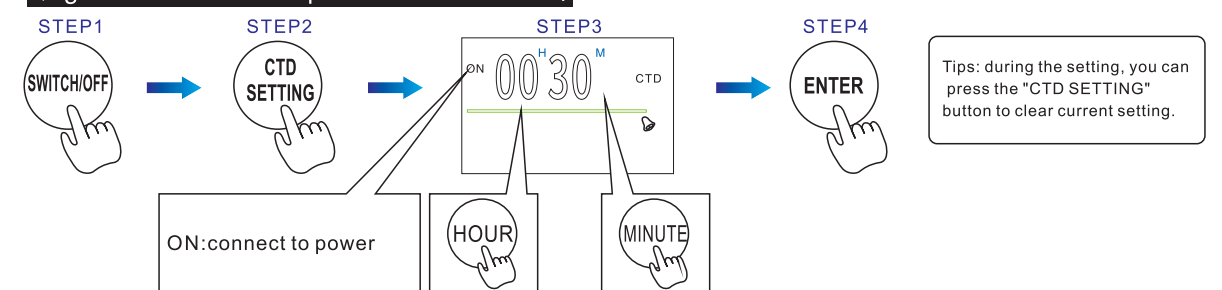
### Function 1 Daily on-off Timing

( Eg: Set the device to be on at 10:30am and off at 12:40pm. This worknig mode repeats every 24 hours )



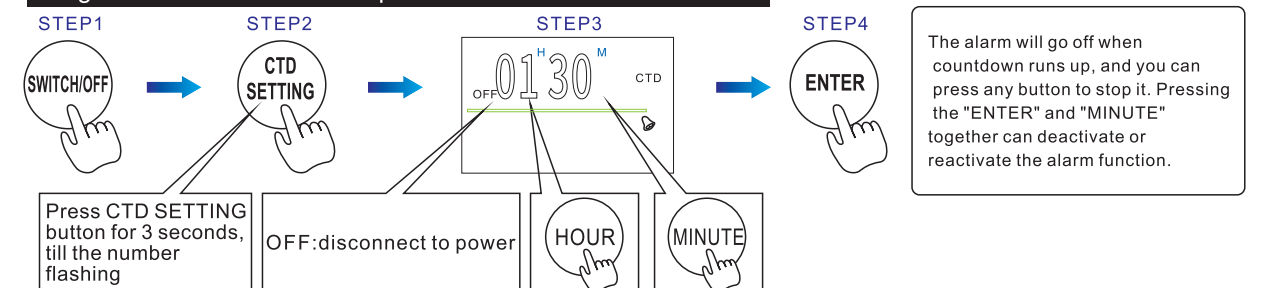
### Function 2 Count down and turn off

( Eg: device will cut off power after 30 mins )



### Function 3 Count down and turn on

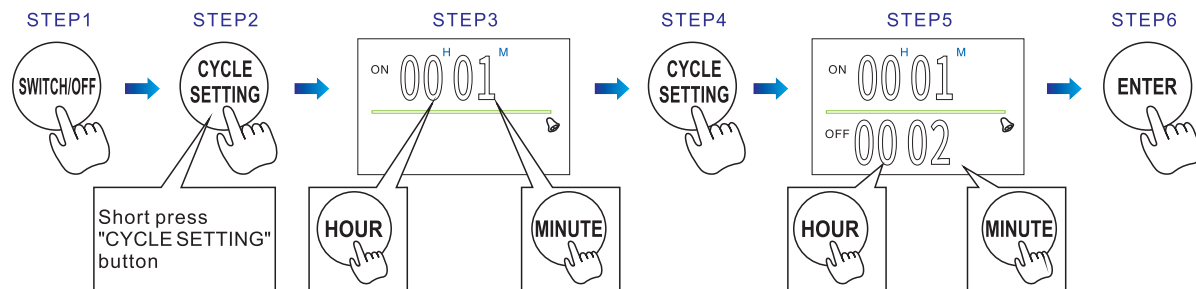
( Eg: Device will connect to power after 1 and a half hours )



## Function 4 Interval Cycle Mode

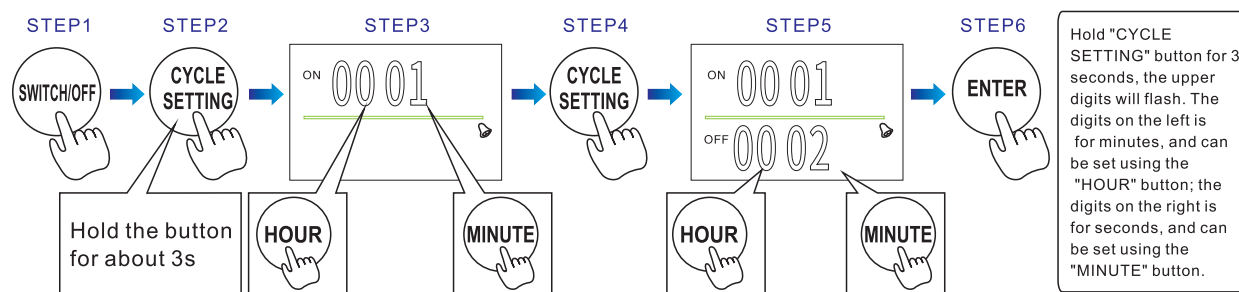
### ① Infinite Cycle in Hour&Min Mode

Eg: Turn on 1 min, turn off 2 mins, and turn on 1 min and turn off 2 mins and keeps going



### ② Infinite Cycle in Min&Sec Mode

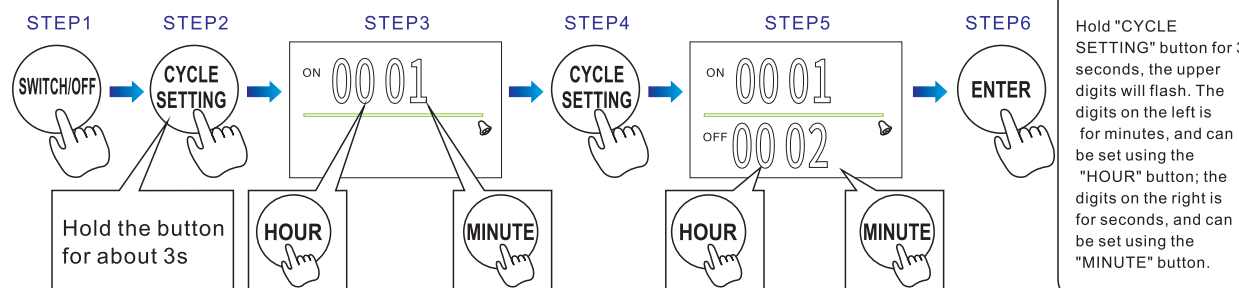
Eg: Turn on 1 sec and turn off 2 seconds, turn on 1 sec and turn off 2 seconds and keeps going



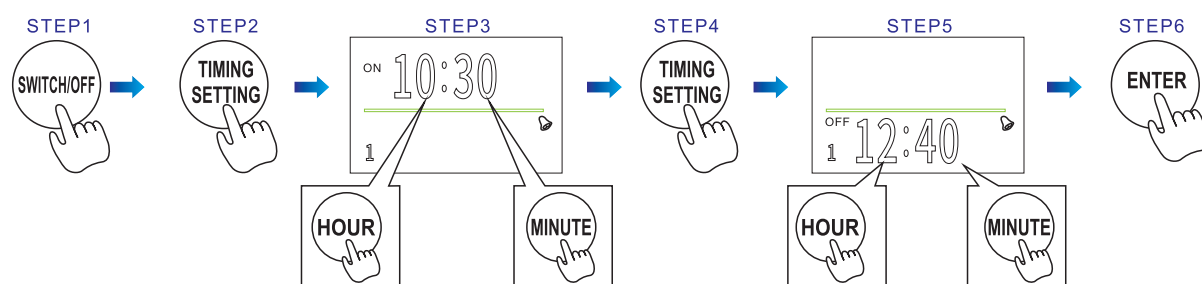
### ③ Interval Cycle Based on Daily on-off Timer Programs

Eg: Turn on at 10:30am, device repeats the cycle "1 sec on, 2 secs off" and off at 12:40pm

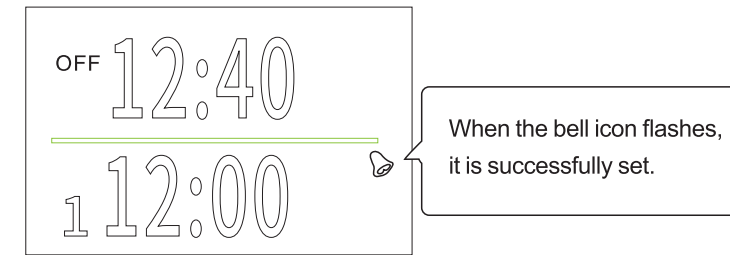
**Step1:** Set an infinite cycle timer in Min&Sec mode (It must be in the Min&Sec mode, and make sure to press "ENTER" button after setting)



**Step2:** Set the daily on-off timer following as the steps of "Daily on-off Timing" function

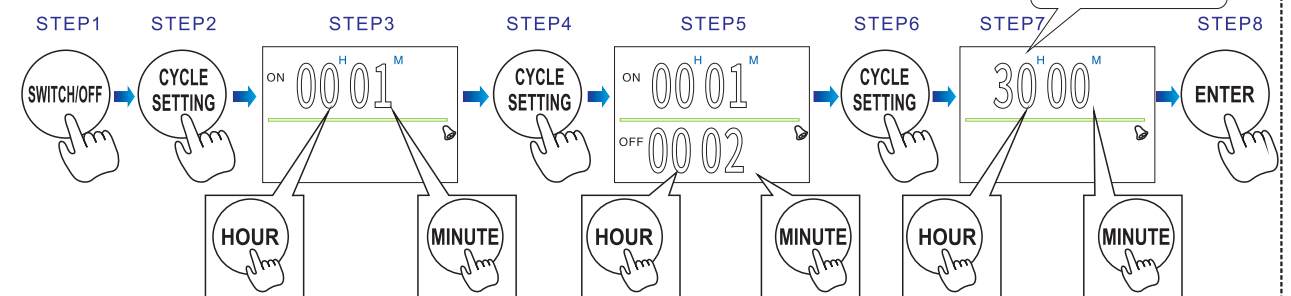


**Step3:** Hold "CYCLE SETTING" button for 3 seconds till you can see the bell icon flashing.



### ④ Interval Cycle for a Certain Hours

Eg: Turn on 1 min and turn off 2 mins, stop working after 30 hours



**Button lock:** Press the "ENTER" and "HOUR" button together to activate or deactivate the Child Lock. There will be a small lock icon on the screen when activated.



**Alarm:** Press "ENTER" button and "MINUTE" button together can activate/deactivate the alarm. It will be on when countdown runs up. Pressing any button can stop the alarm.

**Always ON:** When the timer is working in any mode, short press the "SWITCH/OFF" button, the timer will go back to the CLOCK mode, with the display only showing the current time. When in the CLOCK mode, press the "ENTER" and "TIMING SETTING" button together, the timer will be switched on permanently and you can press the "SWITCH/OFF" button to turn it off.

#### Tips:

1. During setting, you can press the "CTD SETTING" button to clear the current setting, or press again to resume.
2. Only one of these function can be used at a time.
3. If you want to reset the timer to factory mode, please press R button in the hole.