

Brochure

Avtec Scout

Voice and radio dispatch platform for transit rail

The vital components of any successful transit railroad operation include train, personnel and passenger safety as well as stellar on-time performance and customer satisfaction at the most efficient cost. Clear communication is the common thread.

And that's where Avtec Scout™ dispatch consoles come in.

Our mix-and-match, software-based family of solutions can seamlessly integrate your mission-critical communications technologies such as radios, telephony and more, making your enterprise more efficient to positively impact your critical performance metrics.



Proven

For more than 45 years, Avtec has set the standard for dispatch communication systems that perform without fail.

That's why today, most railroad networks choose our Scout dispatch consoles, including:

- 70% of Class I railroads in North America
- Hundreds of short-line, regional, and transit railroads in the United States
- All the leading freight railroads in Mexico and South America

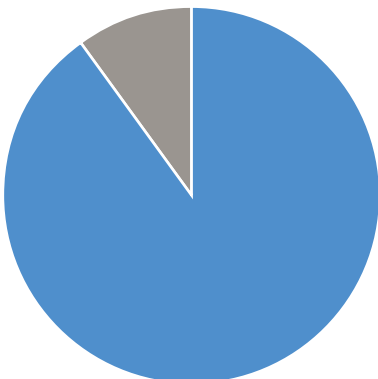
Scalable

Whether for a main line, yard, disaster recovery, or maintenance operation, the Scout family provides a pure VoIP solution to meet your specific dispatch requirements. Innately scalable, its components can be distributed over a LAN/WAN using standard Ethernet technology without the need for a centralized time-division multiplex (TDM) switch. Also, Scout systems can grow in capacity and capabilities as your requirements change, including remote and "pooled resource" options as well as enterprise-wide management of multiple Scout systems.

Reliable

When the safety of millions of passengers is at stake, exceptional audio quality, high availability and fail-safe operation are absolute must-haves. The Scout family provides that with its robust voice communication architecture. And its built-in redundancies for critical components and functions ensure that your railroad communications are always on.

Because on the tracks, every day is a mission-critical day.



90% of all U.S. rail operators

list of optimizing communications between dispatch and field workers as a key method to address government-mandated safety regulations.



Why Avtec Scout?

Safety

With tens of millions of people traveling by rail each year, passenger safety is the number-one concern. Reliable communication is and always will be the key to ensuring that safety. From a Scout console, your dispatchers can safely and efficiently manage:

- Locomotive and track-side two-way radio communications to the dispatch center
- Yard, station and maintenance facilities activity
- Disaster recovery operations

It-friendly

Your IT directors and managers will appreciate the flexible setup and simplified maintenance of a Scout system. We've developed our dispatch software with IT in mind, with features that include:

- Open standards architecture, so you are not locked into a proprietary system
- Compatibility with commercial off-the-shelf (COTS) PCs, servers and monitors
- Optional virtualized (VMWare) back-office functions to leverage enterprise server environment
- Support for USB peripherals (both Avtec designed/manufactured and COTS)
- Dashboard-based performance monitoring/reporting and alarm notifications
- Simple Network Management Protocol (SNMP) message exporting

Technology integration

Scout dispatch consoles integrate with legacy and Next Gen third-party technologies to provide one-touch access to locomotive/wayside radios. They support rail industry DTMF calling as well as common radio and telephony interfaces, including:

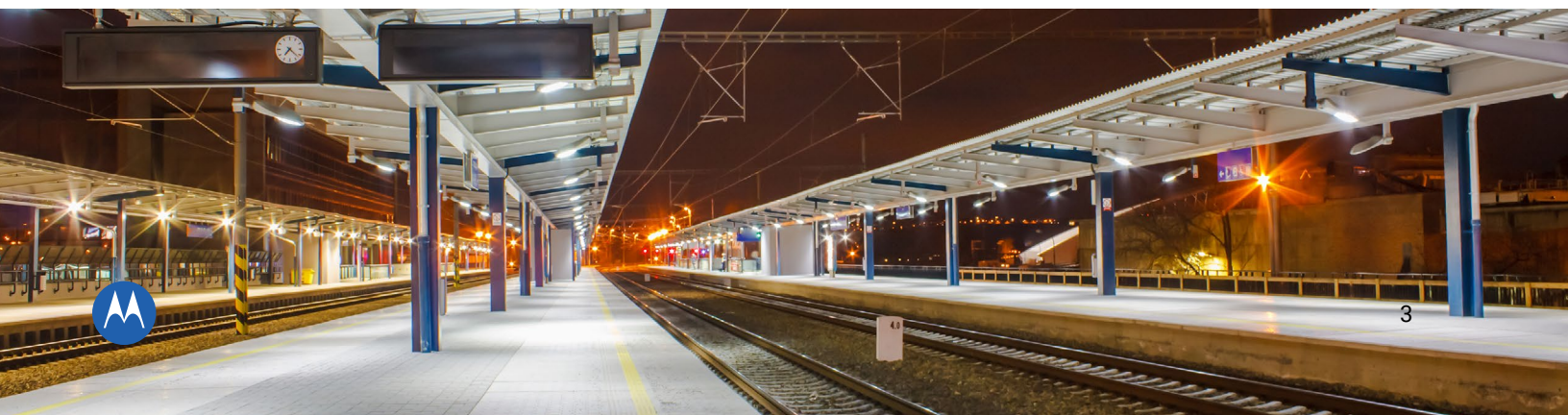
- Standard analog FM
- NXDN for both conventional and trunked modes
- DMR Tiers II & III
- MOTOTRBO complete system suite
- P25 for both conventional and trunked modes
- Traditional, IP-based and cloud-based PBXs

Support

Avtec ScoutCare™, ScoutCare Plus™ and Avtec Protect™ are our subscription-based, post-warranty maintenance and support programs. Put simply, they provide a valuable safety net for your mission-critical communications. With ScoutCare you get:

- 24/7/365 US-based technical support from Scout system experts
- The latest Scout software releases and patches with new capabilities and enhanced security
- Annual system administrator training (new and refresher)
- Access to Avtec Connect – our web-based information portal – featuring product guides, software release notes and training videos

ScoutCare Plus includes all of these features, and adds simplified and streamlined software upgrades via a cloud-based portal. Avtec Protect is our security patching service, which keeps you up-to-date with the latest Microsoft OS patches and STIG settings.



Meet the Scout Enterprise Family



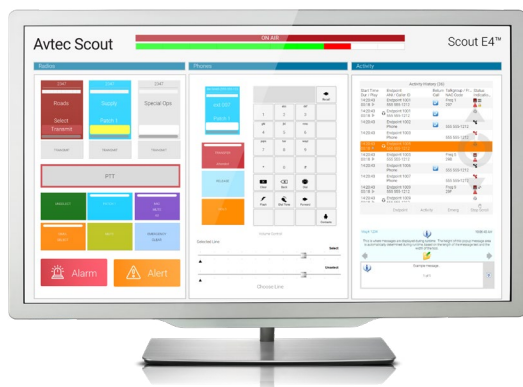
Scout EX

Avtec Scout EX is our most robust solution and is able to monitor up to 250 audio streams and 2,000 channels. If your railroad operation needs a secure, scalable and redundant console solution to manage hundreds of resources on a daily basis, you can depend on Scout EX.



Scout E8

Avtec Scout E8 can monitor up to eight audio streams and eight channels at a time, providing maximum value for a minimal investment. And because it is compatible with all Scout Enterprise products, you can easily expand this system as your dispatch communications center grows.



Scout E4

The Avtec Scout E4 console manages up to four audio streams and eight channels at a time. This cost-effective solution is compatible with Scout EX and E8 consoles, so you can add additional software licenses when you need them.





Broaden and enhance your communications

Avtec's versatile Scout platform can collaboratively work with other best-in-class solutions, including those of Motorola Solutions. For example, Scout is compatible with the following:

Broadband PTT

WAVE is the industry's broadest portfolio of LTE and Wi-Fi devices for instant communications and radio network interoperability, enabling the perfect fit for your railroad organization's needs. For example, this subscription-based group communication service offers many push-to-talk (PTT) options, so your employees can be easily connected no matter their device, network or location.

Emergency call management

VESTA® 9-1-1 call handling solution provides a suite of software and services that cost-effectively manages the process of receiving and dispatching emergency calls. In fact, **VESTA** software is involved in 65% of the 911 calls made in the U.S. Help your railroad police and/or security departments take the crucial first step toward integrated, multimedia communications, while providing seamless workflows, technology migration and deployment options that assist those tasked with security and safety in saving time, money and lives.

Video security and analytics

The video security, video analytics, access control and license plate recognition solutions provided by **Avigilon** and **Vigilant** ensure your operation receives the right information at the right time. For example, Avigilon and Vigilant cameras can be deployed wayside, in rail yards or key vehicle entry points, providing your dispatchers with visual insight to improve overall security.

Situational awareness

CommandCentral Aware is a cloud-based location and mapping solution that serves as an enhanced centralized integration point for your Scout dispatch communications, WAVE Broadband PTT, MOTOTRBO Radio Systems (other systems are planned), and Avigilon and Vigilant video solutions. Keep your people connected when it matters most, quickly providing situational awareness and effective responses. View critical environments, then locate and notify your railroad teams instantly of dangerous situations, inclement weather, workplace violence, among countless other situations.

Teldio TruFleet Plus tracks your MOTOTRBO radios in real-time using a rich and intuitive web-based interface that can be accessed from within the Scout console. View, search and replay radio tracking for a given time period, create geofences with alerts, and generate reports and statistics to drive better operational outcomes. Easily send text messages to employees directly from your Scout consoles.





To learn more, visit:
www.motorolasolutions.com/AvtecScout



Motorola Solutions, Inc. 500 West Monroe Street, Chicago, IL 60661 U.S.A. motorolasolutions.com

MOTOROLA, MOTO, MOTOROLA SOLUTIONS and the Stylized M Logo are trademarks or registered trademarks of Motorola Trademark Holdings, LLC and are used under license. All other trademarks are the property of their respective owners. ©2025 Motorola Solutions, Inc. All rights reserved. 08-2025 [EV03]

