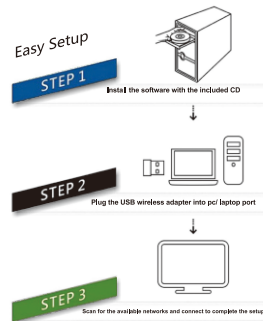


# USB Bluetooth Adapter

## User Manual



## Installation

To avoid software confliction, please uninstall any previously installed third-party Bluetooth drivers or management software on your computer before installing the bluetooth driver software.

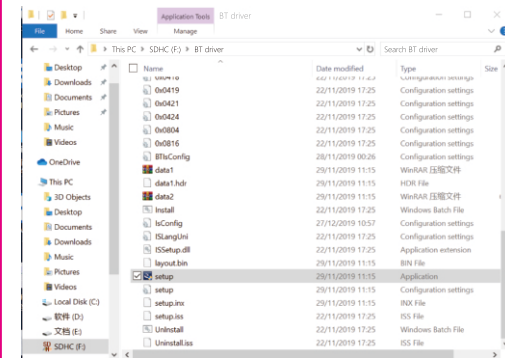
The Default Bluetooth drivers provided by Microsoft Windows have limited functionality, it will installed automatically after you inserting the USB adapter, you still need to install the full driver software on CD if you want to access full functionality (more Bluetooth profiles supported).

## System Requirement

- Supported Operating System: Windows 7/8/10/11(32/64 bit),
- CPU Speed: 500MHz or higher
- Hard Drive Space: 500 MB
- RAM: 1GB or more

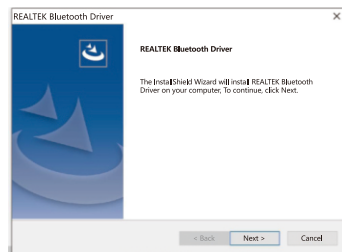
## • Installing Drivers from the CD

Connect Bluetooth adapter to computer, Open the CD in Windows Explorer and run Setup.exe under Windows folder

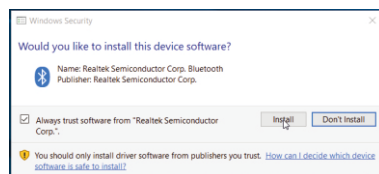


## • Auto Installation Program

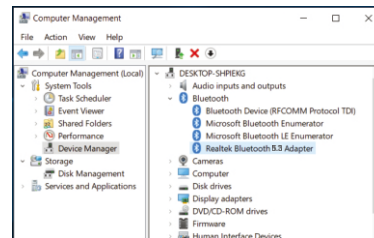
Click Next to start installation



Click Install if there is a Warning window, check Always Trust software from "Realtek Semiconductor Corp"; you need to restart the computer after installation finished.

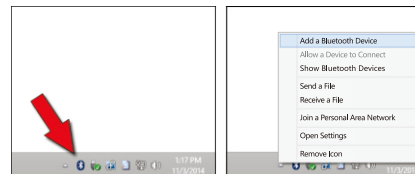


You will find "Realtek Bluetooth 5.3 Adapter" under Device Manager after driver software installed successfully.

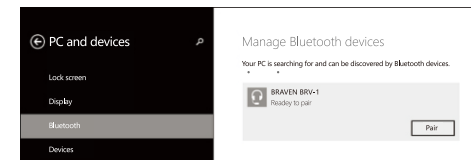


## Pair Your Devices

The Bluetooth icon should appear in the system tray after driver installed. Right-click the icon and choose "Add a Bluetooth Device" from the context menu.



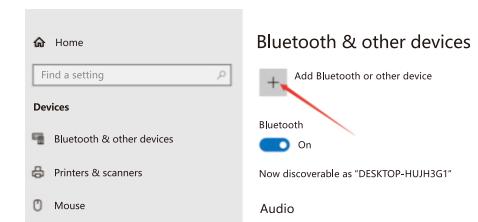
If you're using Windows 10, you'll see a screen like below. Just click the Pair button for the device you want to connect.



If you're using Windows 7, you'll see a similar screen, select the device you want to connect and then click Next.

## • Pairing a Device that Doesn't Show Up Automatically

If for some reason your device doesn't appear below, click the "Add Bluetooth or Other Device" button located at the top of the Settings window.



This device complies with Part 15 of the FCC Rules. Operation is subject to the following two conditions: (1) this device may not cause harmful interference, and (2) this device must accept any interference received, including interference that may cause undesired operation.

Changes or modifications to this unit not expressly approved by the party responsible for compliance could void the user's authority to operate the equipment.

NOTE: This equipment has been tested and found to comply with the limits for a Class B digital device, pursuant to Part 15 of the FCC Rules. These limits are designed to provide reasonable protection against harmful interference in a residential installation. This equipment generates uses and can radiate radio frequency energy and, if not installed and used in accordance with the instructions, may cause harmful interference to radio communications. However, there is no guarantee that interference will not occur in a particular installation. If this equipment does cause harmful interference to radio or television reception, which can be determined by turning the equipment off and on, the user is encouraged to try to correct the interference by one or more of the following measures:

- Reorient or relocate the receiving antenna.
- Increase the separation between the equipment and receiver.
- Connect the equipment into an outlet on a circuit different from that to which the receiver is connected.
- Consult the dealer or an experienced radio/TV technician for help.

This device and its antenna(s) must not be co-located or operation in conjunction with any other antenna or transmitter.

#### Radiation Exposure Statement

The device has been evaluated to meet general RF exposure requirement in portable exposure condition without restriction.