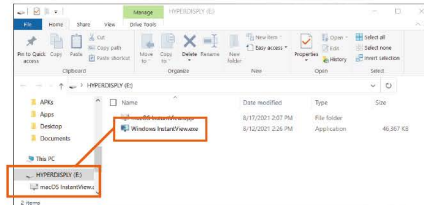
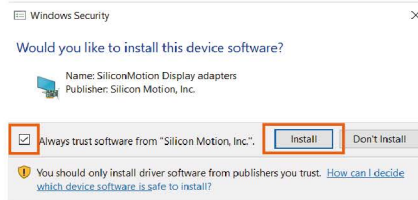


SETUP FOR WINDOWS

- 1 Connect the USB-C Display Hub/Adapter to your Windows computer.
- 2 The computer will ask if you want to open a drive. Open the drive, then select "Windows InstantView.exe."



- 3 A permission screen should appear, asking if you want to install the software. Select "Install." You can choose to "Always trust software from Silicon Motion, Inc."



- 4 A Hyper Plug & Play window will appear. Simply hit connect and you will get to choose between Extended Mode or Mirrored Mode.

EXTENDED MODE:



Switch to Mirrored Display

Disconnects Monitor

MIRRORED MODE:



Switch to Extended Display

Disconnects Monitor



HYPER DRIVERLESS DISPLAY TECHNOLOGY

QUICK START GUIDE

SETUP FOR MAC

- 1 Connect the USB-C Display Hub/Adapter to your Mac computer.
- 2 Double-click the HYPERDISP icon on your desktop screen.
- 3 Click on the drive, then click on the "macOS InstantView" application.
- 4 The application will check for updates. It is recommended that you choose to update to the latest version.



- 5 You will now be in the application itself. It will have two looks depending on if it's in Extended Mode or Mirrored Mode.

EXTENDED MODE:



Switch to Mirrored Display

Disconnects Monitor

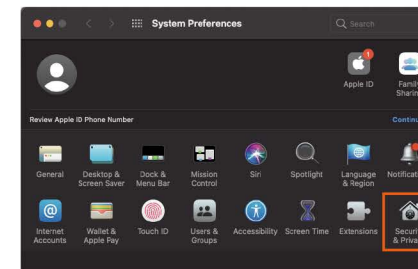
MIRRORED MODE:



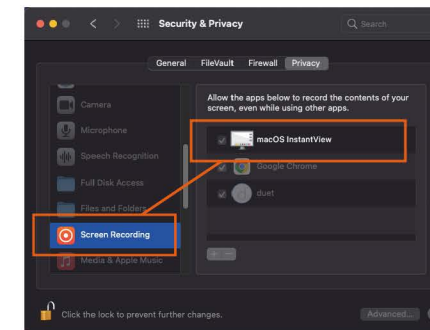
Switch to Extended Display

Disconnects Monitor

- 6 When you switch to Extended Mode, the application may ask for screen recording permissions. Approving it enables HyperDisplay to access the pixels it needs to render a Mirrored or Extended Display and send them over USB from your computer to the chosen Display. It does not send any data or pixels back to Hyper. To activate this, you'll want to open System Preferences and locate Security & Privacy.



- 7 Once in Security & Privacy, you'll need to make sure that the "macOS InstantView" is selected under "Screen Recording."



ANY QUESTIONS?

Our Technical Support Team is here to help.

Website Live Chat:
www.hypershop.com

Technical Support Email:
support@hypershop.com

Technical Support Telephone:
+1 (408) 737-7878