

**READ BEFORE USE
LIRE AVANT UTILISATION
LEA ANTES DE USAR**

Visit www.hamiltonbeach.com for our complete line of products and Use and Care Guides – as well as delicious recipes, tips, and to register your product online!

Rendez-vous sur www.hamiltonbeach.ca pour notre liste complète de produits et de nos manuels utilisateur – ainsi que nos délicieuses recettes et nos conseils !

¡Visite www.hamiltonbeach.com (EE. UU.) o www.hamiltonbeach.com.mx (México) para ver otros productos de Hamilton Beach o para contactarnos!

Questions?

Please call us – our friendly associates are ready to help.
USA: 1.800.851.8900

Questions ?

N'hésitez pas à nous appeler – nos associés s'empresseront de vous aider.
CAN : 1.800.267.2826

¿Preguntas?

Por favor llámenos – nuestros amables representantes están listos para ayudar.

EE. UU.: 1.800.851.8900

MEX: 01 800 71 16 100

Le invitamos a leer cuidadosamente este instructivo antes de usar su aparato.

Hamilton Beach®



FlexBrew® Programmable Single-Serve
Coffee Maker With Hot Water Dispenser

Cafetière et distributeur d'eau chaude

1 tasse programmable FlexBrew^{MD}

FlexBrew® Cafetera Programable de Servicio
Único con Dispensador de Agua Caliente

English 2

Français..... 16

Español 30

IMPORTANT SAFEGUARDS

When using electrical appliances, basic safety precautions should always be followed to reduce the risk of fire, electric shock, and/or injury to persons, including the following:

1. Read all instructions.
2. This appliance is not intended for use by persons (including children) with reduced physical, sensory, or mental capabilities, or lack of experience and knowledge, unless they are closely supervised and instructed concerning use of the appliance by a person responsible for their safety.
3. Close supervision is necessary when any appliance is used by or near children. Children should be supervised to ensure that they do not play with the appliance.
4. Do not touch hot surfaces. Use handles or knobs. Care must be taken, as burns can occur from touching hot parts or from spilled, hot liquid.
5. To protect against electric shock, do not place cord, plug, or coffee maker in water or other liquid.
6. Unplug from outlet when the coffee maker is not in use and before cleaning. Allow to cool before putting on or taking off parts and before cleaning the appliance.
7. Coffee maker must be operated on a flat surface away from the edge of counter to prevent accidental tipping.
8. Do not operate any appliance with a damaged cord or plug, or after the appliance malfunctions or has been damaged in any manner. Call our toll-free customer service number for information on examination, repair, or adjustment.
9. The use of accessory attachments not recommended by the appliance manufacturer may cause injuries.
10. Do not use outdoors.
11. Do not let cord hang over edge of table or counter or touch hot surfaces, including stove.
12. Do not place on or near a hot gas or electric burner, or in a heated oven.
13. **WARNING:** To avoid hot water spraying from the piercing needle, do not lift the lid during the brew process.
14. Do not use appliance for other than intended use.
15. **WARNING:** To reduce the risk of fire or electric shock, do not remove the bottom cover of the coffee maker. There are no user-serviceable parts inside. Repair should be done by authorized service personnel only.
16. **CAUTION!** Cut Hazard: Removable single-serve pack holder contains a sharp blade. Use caution when handling.
17. **CAUTION!** Cut Hazard: Piercing needle is sharp. Use caution when cleaning.

SAVE THESE INSTRUCTIONS!

Other Consumer Safety Information

This appliance is intended for household use only.

⚠ WARNING Electrical Shock Hazard: This appliance is provided with a polarized plug (one wide blade) to reduce the risk of electric shock. The plug fits only one way into a polarized outlet. Do not defeat the safety purpose of the plug by modifying the plug in any way or by using an adapter. If the plug does not fit fully into the outlet, reverse the plug. If it still does not fit, have an electrician replace the outlet.

The length of the cord used on this appliance was selected to reduce the hazards of becoming tangled in or tripping over a longer cord. If a longer cord is necessary, an approved extension cord may be used. The electrical rating of the extension cord must be equal to or greater than the rating of the appliance. Care must be taken to arrange the extension cord so that it will not drape over the countertop or tabletop where it can be pulled on by children or accidentally tripped over.

To avoid an electrical circuit overload, do not use another high-wattage appliance on the same circuit with this appliance.

Parts and Features

*To order parts:

US: 1.800.851.8900

www.hamiltonbeach.com







Canada: 1.800.267.2826

Mexico: 01 800 71 16 100

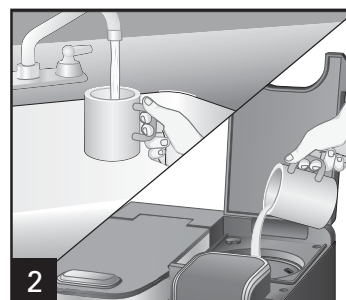
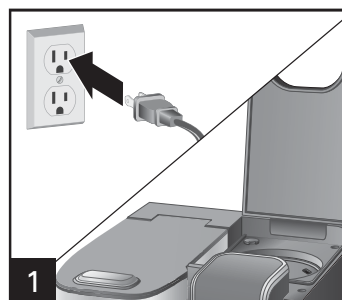
BEFORE FIRST USE: Wash all removable parts in hot, soapy water. Rinse and dry. Brew one cycle with water on each side and discard water.



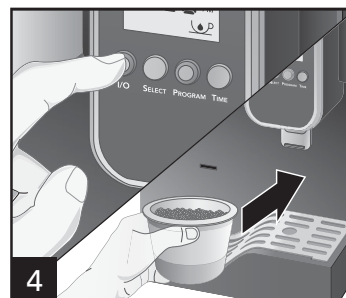
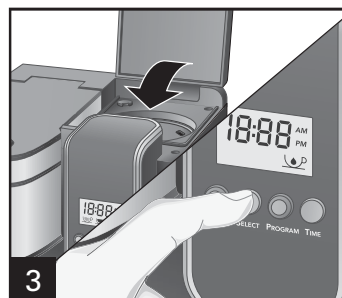
Display Icons

	Regular strength coffee
	BOLD strength coffee
	Slow pulsing of the hot water icon when the hot water heater is on. This icon will be steady once the heater turns off.
	If the hot water icon is on and this message is displayed, then the hot water side needs cold water added.
	If either coffee icon is on and this message is displayed, then the coffee side needs cold water added.
	Piercing needle is clogged with coffee grounds. Follow "Routine Cleaning of the Needle" directions on page 11.

How to Use the Hot Water Function

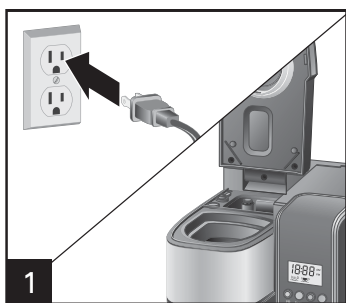


Open water tank lid. Fill reservoir with maximum of 16 oz. (473 ml) of water.

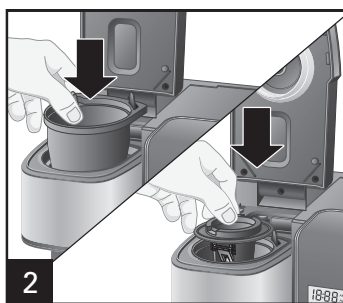


Lower lid. Press **SELECT** to choose hot water icon. Press **I/O** (ON/OFF) to heat the water. Icon will stop blinking when water is hot. Water will keep hot for 30 minutes and unit will shut off automatically. Place your mug or bowl against the hot water lever to dispense.

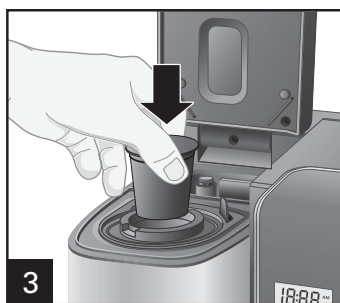
How to Brew a Single-Serve Pack



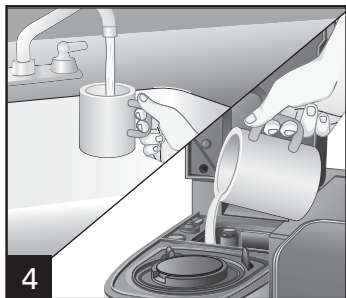
1 To open lid, press button and lift.



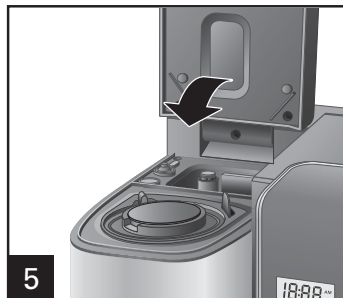
2 Add funnel and insert the single-serve pack holder into funnel.



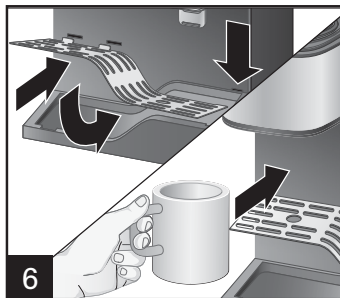
3 Place a pack into the single-serve pack holder. Do not remove foil.



4 Fill reservoir with cup or travel mug into which the coffee will be brewed. 10 oz. (296 ml) of water is the MAX amount for single-serve packs.



5 Lower lid until you hear a click sound. This means your lid is locked in place. To adjust cup rest: Tilt the front of the cup rest up to insert tabs into openings for the upper cup rest position. To return cup rest to lower position: Tilt the front of the cup rest up; move tabs down and out. Lower cup rest into position so tab on right-rear corner is in the slot.



6 Brew coffee.

⚠ WARNING Burn Hazard.

To avoid contact with hot coffee or water:

- Fill reservoir with cup or travel mug of water into which the coffee will be brewed.
- Place cup or travel mug on cup rest.
- Do not lift lid during the brewing process.

⚠ CAUTION Cut Hazard.

Use caution when handling:

- Removable single-serve pack holder has a sharp blade.
- Piercing needle on the underside of the lid is sharp.

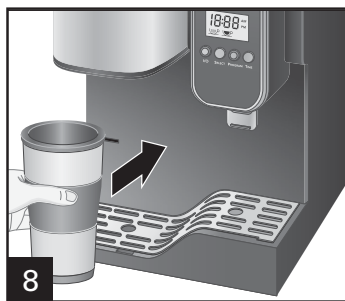
NOTES:

- Use only cold water in reservoir.
- Do not use hot water.
- Do not reheat coffee in the machine.
- Do not use creamer or nondairy creamer in reservoir.
- After brewing hot cocoa single-serve packs, brew a water-only cycle without a single-serve pack to avoid the possibility of clogging the piercing needle.
- The brew basket may be left in place when using the single-serve pack holder.

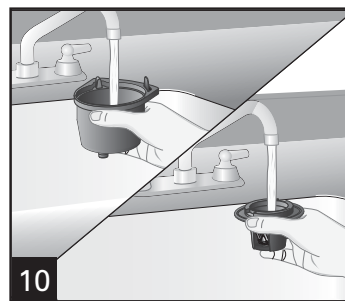
How to Brew a Single-Serve Pack (cont.)



Use the lower cup position for a larger cup, such as a travel mug.



Press **SELECT** button to select regular  or bold  strength coffee. Press **I/O** (ON/OFF) button to brew your coffee. The coffee maker will shut off automatically when brewing is complete.



Funnel and single-serve pack holder should be rinsed after every use.

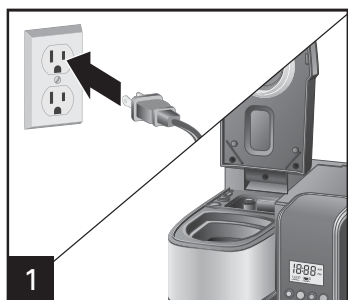
⚠ WARNING Burn Hazard.

If brew process is stopped early, the water must be drained from the unit. Place a large mug on cup rest. Press the **I/O** (ON/OFF) button to remove any remaining water. Failure to remove the water can cause the next cup brewed to overflow.

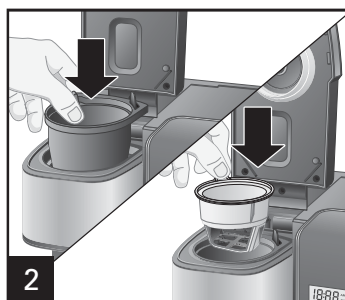
NOTES:

- Coffee maker brews all the water added.
- Press the **I/O** (ON/OFF) button again to STOP brewing midcycle.
- Press **I/O** (ON/OFF) button to remove any remaining water from the water reservoir.
- If there is a small amount of water remaining in the water reservoir, add at least 8 oz. (237 ml) cold water before pressing the **I/O** (ON/OFF) button.

How to Brew Ground Coffee



1 To open lid, press button and lift.

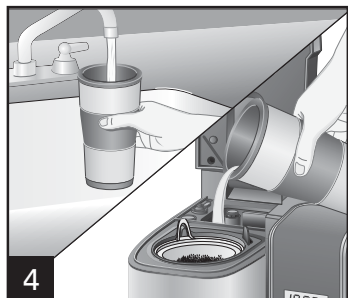


2 Place brew basket in funnel, aligning brew basket handle with funnel tab.



3 Add ground coffee to brew basket. (3 tablespoons [44 ml] is the MAX amount of any type of grounds.)

⚠ WARNING Burn Hazard:
To avoid overflow, keep ground coffee below MAX fill line.



4 Fill reservoir with cup or travel mug into which the coffee will be brewed.



5 Lower lid until you hear a click sound. This means your lid is locked in place.

⚠ WARNING Burn Hazard.

To avoid contact with hot coffee or water:

- Fill reservoir with cup or travel mug of water into which the coffee will be brewed.
- Place cup or travel mug on cup rest.
- Remove single-serve pack holder before adding coffee grounds to brew basket.
- Do not lift lid during the brewing process.

⚠ CAUTION Cut Hazard.

Use caution when handling:

- Removable single-serve pack holder has a sharp blade.
- Piercing needle on the underside of the lid is sharp.

NOTES:

- Use only cold water in reservoir.
- Do not use hot water.
- Do not reheat coffee in the machine.
- Do not use creamer or nondairy creamer in reservoir.
- Do not use hot cocoa powder or mix in the brew basket.

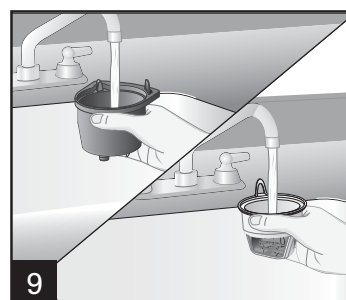
How to Brew Ground Coffee (cont.)



6 Use the lower cup position for a larger cup, such as a travel mug.



7 Press **SELECT** button to select regular  or bold  strength coffee. Press **I/O (ON/OFF)** button to brew your coffee. The coffee maker will shut off automatically when brewing is complete.



9 Funnel and brew basket should be rinsed after every use.

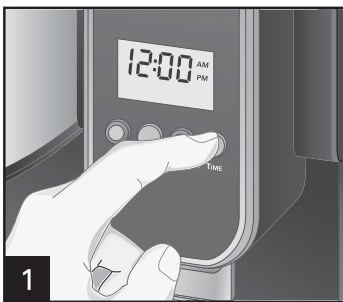
⚠ WARNING Burn Hazard.

If brew process is stopped early, the water must be drained from the unit. Place a large mug on cup rest. Press the **I/O (ON/OFF)** button to remove any remaining water. Failure to remove the water can cause the next cup brewed to overflow.

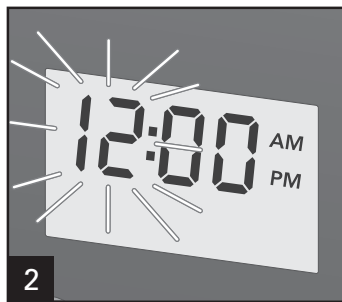
NOTES:

- Coffee maker brews all the water added.
- Press the **I/O (ON/OFF)** button again to STOP brewing midcycle.
- Press **I/O (ON/OFF)** button to remove any remaining water from the water reservoir.
- If there is a small amount of water remaining in the water reservoir, add at least 8 oz. (237 ml) cold water before pressing the **I/O (ON/OFF)** button.

How to Set the Time for the First Time



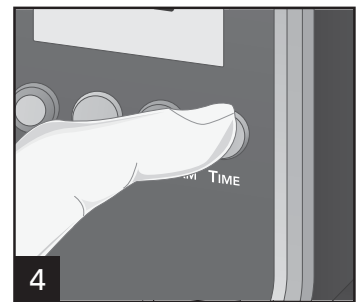
1 Press and release **TIME** button.



2 "12" will flash.



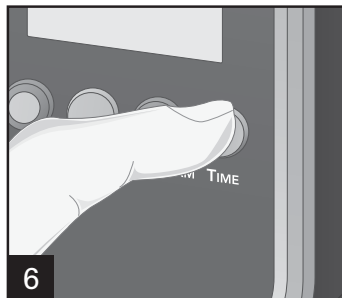
3 Press **TIME** button to adjust by 1-hour increments.



4 To adjust hours faster, press and hold **TIME** button. Release button and wait 3 seconds for the minutes to begin flashing, indicating minutes can now be set.



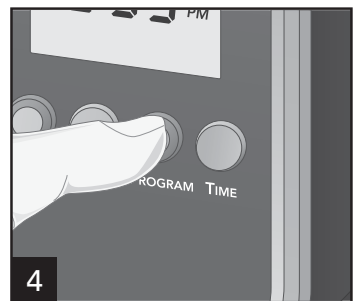
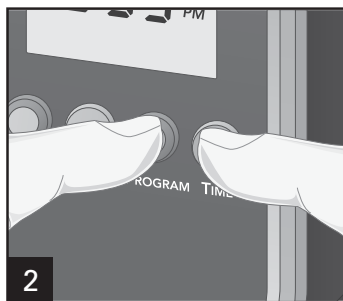
5 Minutes will flash for only 3 seconds and then stop flashing if the **TIME** button is not pressed or held within that time. Press **TIME** button to adjust by 1-minute increments.



6 To adjust minutes faster, press and hold **TIME** button. Release button and wait 3 seconds for the clock to stop flashing and the time will be set.

NOTE: If you press the **I/O** (ON/OFF) button before setting the clock, the clock display will disappear for your convenience. At any time, the clock can be set by pressing the **TIME** button.

How to Program (After the Time Has Been Set)



For the first time you program, press and hold **PROGRAM** button for 3 seconds until "19:99" flashes on display. While continuing to hold the **PROGRAM** button, press the **TIME** button. "12:00" will flash on display. Set time according to "How to Set the Time for the First Time" on page 9.

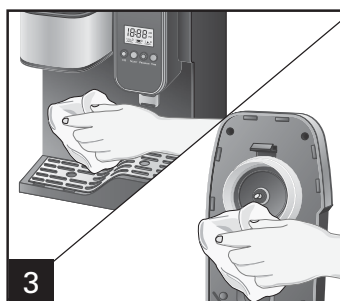
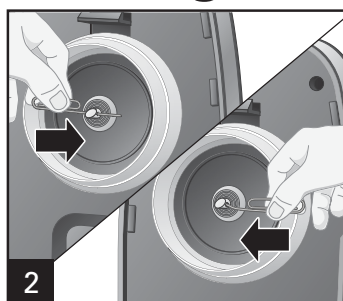
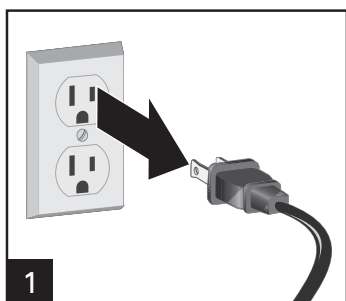
Press and release **PROGRAM** button again to set autostart.



The blue light around the **PROGRAM** button will illuminate to indicate the unit will automatically start at your desired time. After the program autostart time has been set, the autostart sequence can be toggled on/off by pressing the **PROGRAM** button for less than 1 second. To review the autostart time, press the **PROGRAM** button and hold for 3 seconds. After the initial program setting, time will default to the last programmed autostart time set.

Care and Cleaning

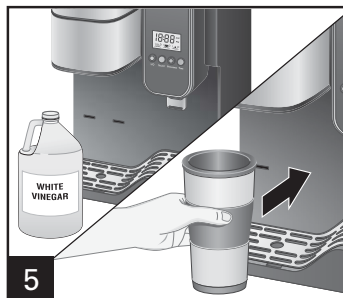
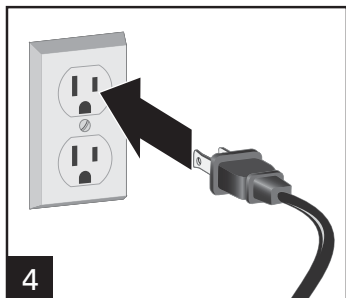
All coffee makers should be cleaned at least once a month (once a week for areas with hard water).



⚠ WARNING Shock Hazard.
Do not immerse cord, plug, or coffee maker in any liquid.

⚠ CAUTION Cut Hazard.
Use caution when handling:
• Removable single-serve pack holder has a sharp blade.
• Piercing needle on the underside of the lid is sharp.

Routine Cleaning of the Needle: The needle is located in the lid of the coffee maker. Bend a small paper clip as shown; insert the tip of the paper clip through the hole/eye of the needle and up into the needle to ensure grounds have been removed. Brew 2 or 3 times with cold water to make sure grounds have been removed from the piercing needle.






Pour 3/4 cup (177 ml) of plain white vinegar and 3/4 cup (177 ml) of cold water into reservoir. Place a 14-oz. (414 ml) cup or travel mug underneath to catch the water/vinegar solution. Press the **I/O** (ON/OFF) button once. After 30 seconds, unplug unit and allow vinegar to clean. After 30 minutes, plug in unit. Press **I/O** (ON/OFF) button and allow it to finish the brew cycle. When brew cycle is finished, wait for unit to cool. Empty cup and rinse. Run 2 to 3 cycles of cold tap water. The unit is cleaned and ready to make coffee.



DISHWASHER-SAFE

DO NOT use the "SANI" setting when washing in the dishwasher. "SANI" cycle temperatures could damage your product.

Troubleshooting

PROBLEM	PROBABLE CAUSE/SOLUTION
FIL H2O and hot water icon () on display.	<ul style="list-style-type: none"> No water in the hot water reservoir. Fill water reservoir.
NEEDLE on display.	<ul style="list-style-type: none"> Follow "Routine Cleaning of the Needle" directions on page 11.
FIL H2O and coffee cup icons ( ) on display.	<ul style="list-style-type: none"> If either coffee icon is on and this message is displayed, then the coffee side needs water added.
Coffee tastes bad.	<ul style="list-style-type: none"> Coffee maker needs cleaning. Coffee ground too coarse or too fine. Set your coffee grinder to automatic drip grind. Poor coffee quality and freshness. Poor water quality. Use cold filtered or bottled water.
Water on counter under unit.	<ul style="list-style-type: none"> Overfilled water reservoir. Do not add more than 14 ounces (414 ml) of water to the removable water filter. Some mugs/cups do not pour cleanly and can dribble water down the side of the cup and onto the counter.
Coffee maker will not brew.	<ul style="list-style-type: none"> The piercing needle may be clogged. Clean piercing needle in the lid of the coffee maker as shown on page 11.

Troubleshooting (cont.)

PROBLEM	PROBABLE CAUSE/SOLUTION
Coffee overflows from brew basket.	<ul style="list-style-type: none">• Use removable brew basket for ground coffee. 3 tablespoons (44 ml) is the maximum amount of grounds to brew.• Use a lesser amount of ground coffee.• When using whole bean coffee, a standard automatic drip coffee grind will yield best results. Be careful not to overgrind, since very finely ground coffee can cause overflow.
Coffee overflows from mug or travel mug.	<ul style="list-style-type: none">• To prevent coffee overflowing from a mug/travel mug, use the same mug/travel mug to brew into that was used to fill the water reservoir. Do not add more than 14 ounces (414 ml) of water. There may also be additional water in the system that is causing the overflow. Remove brew basket or single-serve pack holder. Push I/O (ON/OFF) to remove remaining water.
Water remaining in coffee-side reservoir.	<ul style="list-style-type: none">• Added too much water. Place cup or travel mug on cup rest. Remove single-serve pack and replace brew basket. Repeat brewing cycle. Press I/O (ON/OFF) button to remove remaining water.
Coffee not dispensing.	<ul style="list-style-type: none">• Piercing needle is clogged with coffee grounds. Follow “Care and Cleaning” directions on page 11 to remove coffee grounds.
Failed foil seal.	<ul style="list-style-type: none">• There is variability in the single-serve pack manufacturing process which causes some types of single-serve packs to be weaker at the seams. Brew using a different brand of single-serve packs.

Notes