



— SIMPLIFY YOUR CREATION —

Official Website



Facebook



X



Instagram



LinkedIn



Tel : +86 755 86581960

E-mail : bright@esun3d.com

Website : www.esun3d.com

eSUN®

# 3D PRINTING FILAMENT INTRODUCE



www.esun3d.com

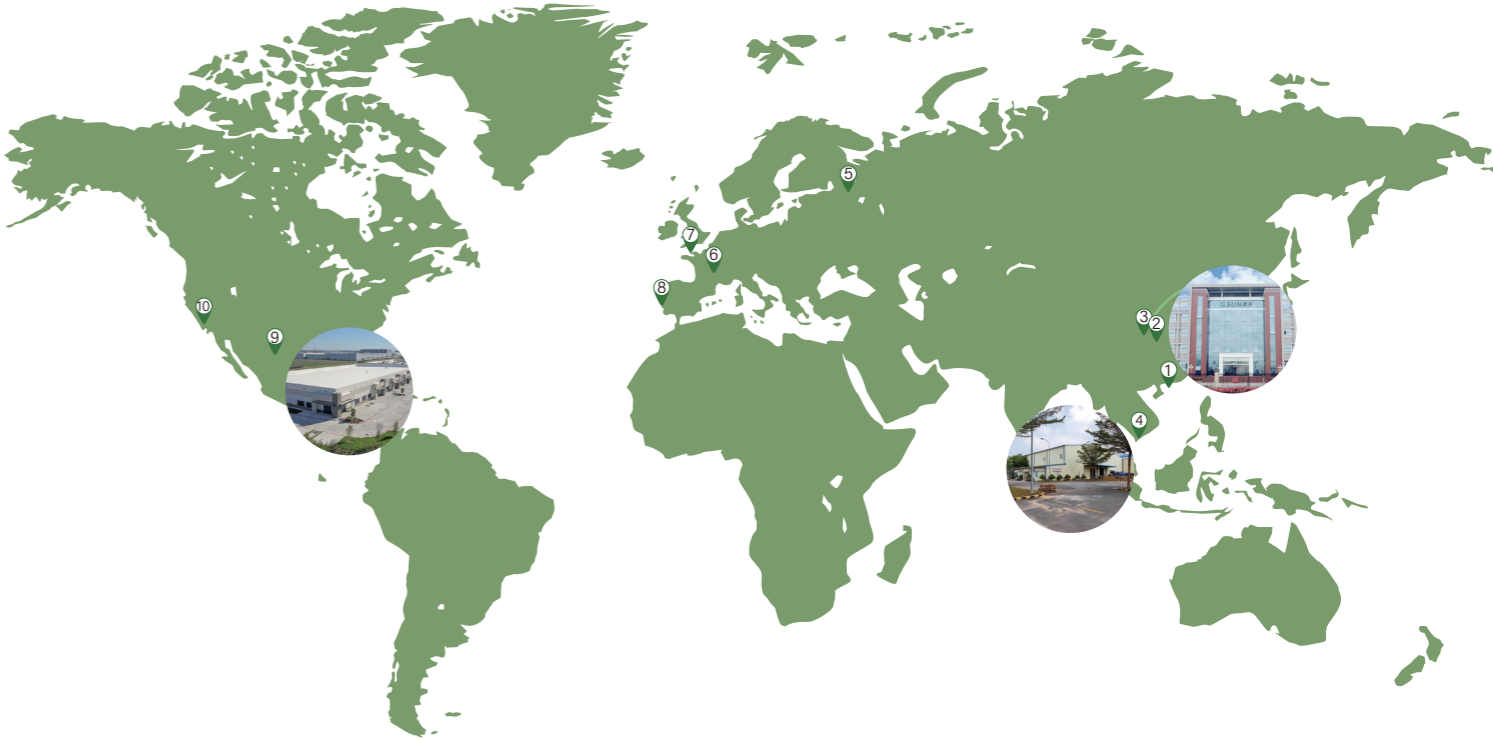
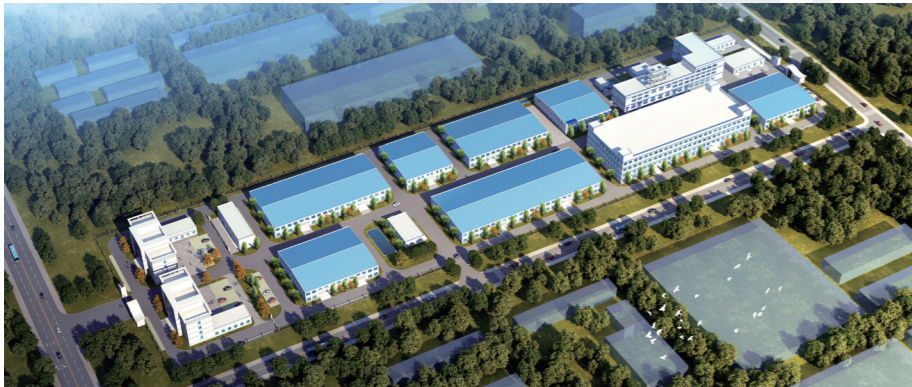


General/Aesthetic  
**Collection**

# Profiles

eSUN is an internationally renowned 3D printing material brand founded by Shenzhen Esun Industrial Co., Ltd. The company was established in 2002 and was successfully listed on the NEEQ since 2016 (stock code: 836514).

The eSUN brand is committed to research and development, production and sales, and promotes the in-depth development of the 3D printing industry. The company has mastered the production technology of PLA, PCL, ABS, PETG and other 3D printing materials, which can meet different requirements of customers. eSUN 3D printing materials have a full range, excellent performance and wide application. They are widely used in product design, industrial manufacturing, surgical medical treatment, culture and art, education and scientific research, etc.



- |                             |                           |                             |                             |                        |
|-----------------------------|---------------------------|-----------------------------|-----------------------------|------------------------|
| ① Shenzhen, CN Headquarters | ③ Xiaogan, CN Factory     | ⑤ Russian transit warehouse | ⑦ Dutch transit warehouse   | ⑨ Houston, US Office   |
| ② Wuhan, CN Office          | ④ Ho Chi Minh, VN Factory | ⑥ German transit warehouse  | ⑧ Spanish transit warehouse | ⑩ US transit warehouse |

**eSUN's products have been recognized by customers all over the world, and sold to nearly 100 countries and regions, building a global reputation .**

## Easy to Use

eSUN 3D printing materials have undergone rigorous testing and precision optimization. Streamlined parameter adjustment procedures, reduce printing difficulty. Universal compatibility with 3D printers from entry-level to professional-grade, ensures a smooth printing experience.



## Recyclable and Sustainable

When printing indoors, eSUN 3D printing materials produce less odor, providing a more comfortable user experience. The PLA series of consumables can be degraded or recycled, reducing environmental pollution, conforming to the concept of sustainable development, and being more environmentally friendly and reassuring.

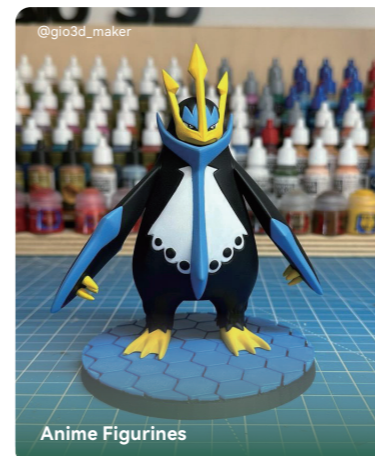
## Economic Effects

eSUN 3D printing consumables rely on global sales and large-scale production to reduce manufacturing costs, providing users with high-quality and cost-effective materials. They are deeply trusted by users in more than 100 countries and regions.

## Abundant Choices

eSUN 3D printing consumables offer a wide range of colors and effects, such as solid colors, transparency, matte, fluorescence, metallic appearance, and wood-grain imitations. These effects enhance the creativity of 3D printing projects.

## General / Aesthetic Applications



Anime Figurines



Toys



Film &amp; TV Props



Creative Kits



Cultural and Creative



Outdoor use



Education



BASIC Series

- 01 | PLA-Basic
- 02 | PLA-Lite
- 03 | PETG-Basic
- 04 | PET-Basic
- 05 | ABS

PLUS Series

- 06 | PLA+
- 07 | PETG
- 08 | ABS+
- 09 | ASA+

High Speed

- 10 | PLA-HS
- 11 | PLA+HS
- 12 | PETG+HS
- 13 | ABS+HS
- 14 | TPU-HS

Flexible Elastic Series

- 15 | TPU Series
- 16 | PEBA Series

Matte Series

- 17 | PLA-Matte
- 18 | PLA-Matte Dual
- 19 | PLA-Matte Rainbow
- 20 | PETG-Matte

Silk Series

- 21 | PLA-Silk
- 22 | PLA-Silk Magic
- 23 | PLA-Silk Mystic
- 24 | PLA-Silk Rainbow
- 25 | PLA-Silk Candy

Luminous Series

- 26 | PLA-Luminous
- 27 | PLA-Luminous Rainbow
- 28 | PET-Luminous

Flashing Series

- 29 | PLA-Magic
- 30 | PLA-Twinkling
- 31 | PLA-Twinkling Rainbow
- 32 | PLA-Chameleon

Biomimetic Series

- 33 | PLA-Marble
- 34 | PLA-Rock
- 35 | PLA-Wood
- 36 | PLA-Metal

Translucent Series

- 37 | TPU-95A Rainbow
- 38 | PLA-Clear
- 39 | PLA-Clear Rainbow

Color-changing Series

- 40 | PLA-UV Color Change
- 41 | TPU-Temp Color Change



## PLA-Basic

PLA-Basic is an entry-level 3D printing filament designed for enthusiasts and beginners. It is eco-friendly, odorless, and easy to print with.



- The first choice for entry - level printing
- Easy to print
- High cost - performance



Decorations



Concept Models



Prototype Design



## PLA-Lite

By modifying PLA, it retains the easy printing characteristics of PLA, is safe and environmentally friendly, has good printing and forming effects, and is a high cost-performance choice for 3D printing.



- The choice with high cost - performance
- The surface of printed parts is smooth
- The filaments are not easy to break brittly



Concept Models



Cultural and Creative Works



Anime Figurines





## PETG-Basic

PETG-Basic is a 3D printing filament with both strength and toughness, stable printing, and good surface gloss and dimensional stability of the printed model.



- Heat resistance
- Transparency, high toughness
- High cost - performance



Prototype  
Design



Architectural  
Decoration



Translucent  
Models



## PET-Basic

PET-Basic is a recyclable filament specially designed for FDM printing, with its high toughness, impact resistance and stable printing performance, it has become an ideal choice for household goods and manufacturing products.



- Transparency, high toughness
- Chemical resistance
- Waterproofness



Cultural and  
Creative Works

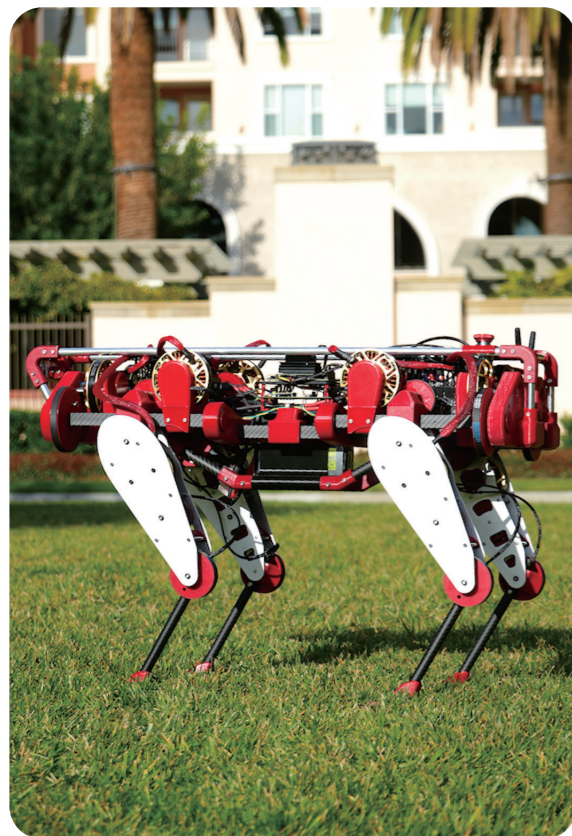


Architectural  
Decoration



Electronics and  
Electrical Appliances





## ABS

ABS has both high strength, high toughness and excellent heat resistance, and can easily cope with complex structures and harsh environments in model construction, making it an ideal choice for industrial prototypes, creative figures and other fields.



- Heat resistance
- High toughness
- High impact resistance



Architectural  
Models



Industrial  
Parts



Mechanical  
Teaching Aids



## PLA+

FDA-certified material, the strength is significantly improved compared with ordinary PLA, while maintaining the environmental protection and degradable characteristics, the printing is smooth and uninterrupted, bringing better performance to your 3D printing projects.



- Stable printing performance
- Wide range of applications
- Rich in colors



Concept  
Models



Prototype  
Design



Electronics and Electrical  
Appliances





## PETG

With excellent impact resistance, excellent transparency and good processing performance, PETG provides stable and reliable support for your creative 3D printing works, and easily realizes the transformation from idea to finished product.



- Softly translucent
- High toughness
- Chemical resistance and waterproofness



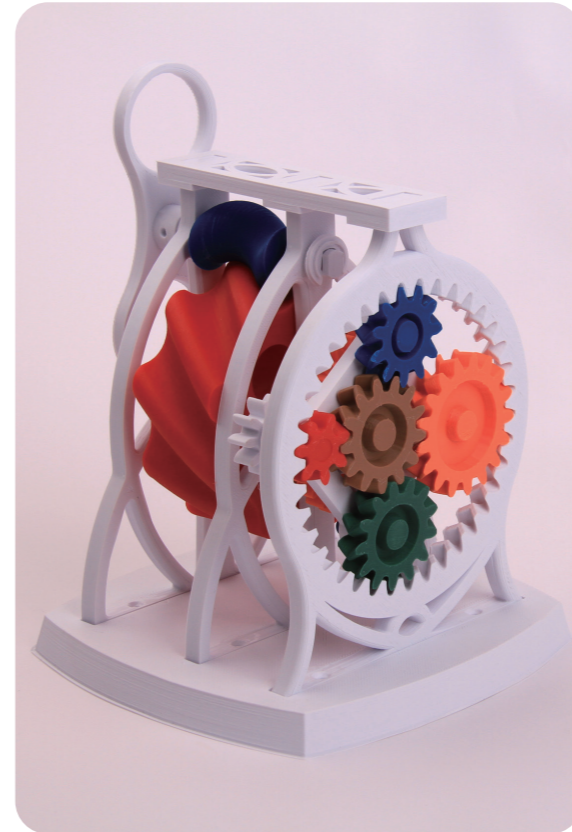
Prototype Design



Translucent Models



Architectural Decoration



## ABS+

ABS+ is strengthened and upgraded on the basis of ABS, which not only continues its advantages of high strength and impact resistance, but also has lower odor and lower shrinkage, and is not easy to warp and crack when printing, helping you easily create high-precision, high-quality 3D works.



- Heat resistance
- High toughness
- Excellent printability



Architectural Models



Industrial Parts



Mechanical Teaching Aids





## ASA+

ASA+ has excellent weather, UV and impact durability, regardless of wind and sun, so that the color of the printed product is consistent.



- High toughness, high rigidity
- High impact resistance
- Heat resistance, weather resistance



Outdoor Applications



Industrial Parts



Automotive Components



## PLA-HS

A product specifically designed for high-speed printers, significantly enhancing PLA printing efficiency.



- Fast printing
- Excellent printability
- Filaments are not easy to break brittlely



Creative Figurines



Model Teaching Aids



Multi - piece Production





## PLA+HS

With faster printing speeds and better fluidity, it ensures excellent interlayer adhesion and printing accuracy is maintained even during high-speed printing.



- Higher toughness
- Fast printing
- Excellent printability



Prototype Design



Electronics and Electrical Appliances



Multi - piece Production



## PETG+HS

A fast consumable designed for high-speed printers, meeting the dual needs of users for strength and stability.



- Fast printing
- High toughness
- Chemical resistance and waterproofness



Translucent Models



Architectural Decoration



Multi - piece Production





## ABS+HS

Excellent mechanical strength, impact resistance, and heat resistance, capable of maintaining stable performance under higher loads and complex environments, making it an ideal choice for users with higher demands for durability and strength.



- Heat resistance, strong and tough performance
- Low odor, low shrinkage rate
- High - speed printing, can be polished with acetone



Industrial  
Parts



Mechanical  
Teaching Aids



Multi - piece  
Production



## TPU-HS

Under high-speed printing, TPU-HS balances strength and molding effects, exhibiting excellent antibacterial and mold-resistant properties, good flexibility, and ease of printing.



- Antibacterial and mildew - proof, high - speed printing
- Flexible and soft, high elasticity
- Strong and durable, high toughness



Medical  
Equipment



Shoe  
Materials



Electronics and  
Electrical Appliances





## TPU Series

The TPU series 3D printing filaments feature a gradient hardness design (64D/95A/90A/85A/83A/80A/70A/60A), combining exceptional flexibility, wear resistance, and impact resistance to meet diverse hardness requirements for flexible product printing.



- Flexible and soft, strong and durable
- High elasticity, high toughness
- High impact resistance



Medical Equipment



Shoe Materials



Sports Goods



## PEBA Series

The PEBA Series (90A/85A) 3D printing filaments feature ultra-high resilience, light weight, excellent impact resistance, and stable performance across a wide temperature range. They are ideal for high-toughness, high-elasticity applications such as sports equipment, medical braces, and flexible industrial components.



- High resilience
- Excellent impact resistance, wear resistance, and support performance
- Outstanding low-temperature toughness and cold resistance
- Lightweight and easy to print



Medical Equipment



Shoe Materials



Sports Goods





## PLA-Matte

PLA matte is a matte material modified from PLA. After printing, the surface has a unique matte texture. The support structure is easy to peel off, and the surface of the model is flat. Its high line strength, not easy to break, not easy to warp, can ensure long-term stable printing, is ideal for printing large-size models.



- Monochromatic matte texture
- Rich in colors
- Simplicity breathes luxury



COSPLAY



Decorative Parts



Cultural and Creative



## PLA-Matte Dual

PLA matte dual color is a high performance printing material. It has a matte finish and a unique single line dual color design, showing color layering for a rich model look. The surface is delicate, layer line free, easy to use, with a low shrinkage rate and easy removal. It's suitable for artistic and prototype design.



- High grade matte texture
- Dual color filaments in cross section
- Bright and vivid color matching



COSPLAY



Decorative Parts



Cultural and Creative





## PLA-Matte Rainbow

The PLA matte rainbow combines various colors based on the popular matte monochrome lines, creating vibrant rainbow stripes with different themes while maintaining a high-quality matte texture. This line is particularly suitable for application in cultural and creative design, with a delicate surface that does not show layer lines and excellent printing results.



- Matte rainbow effect
- Rainbow multi color, 8 meter gradient
- Full of dynamics and personality



COSPLAY



Decorative Parts



Cultural and Creative



## PETG-Matte

PETG matte is a matte filament developed based on PETG raw material. This material combines the high strength, high toughness, water-proof, and environmentally friendly characteristics of PETG, while also possessing a high-quality matte texture and good product stability.



- High strength and high toughness
- High grade matte texture
- Suitable for durable basic applications



COSPLAY



Decorative Parts



Cultural and Creative





## PLA-Silk

This material is made from modified PLA material, inheriting easy printing characteristics. The surface of this material is smooth, with a silky luster and no layer lines. The support structure can be easily removed from the model's surface, and the contact surface remains equally flat and smooth after removal, with a rich selection of colors.



- Dynamic silk - like luster
- Rich and saturated colors
- A wide variety



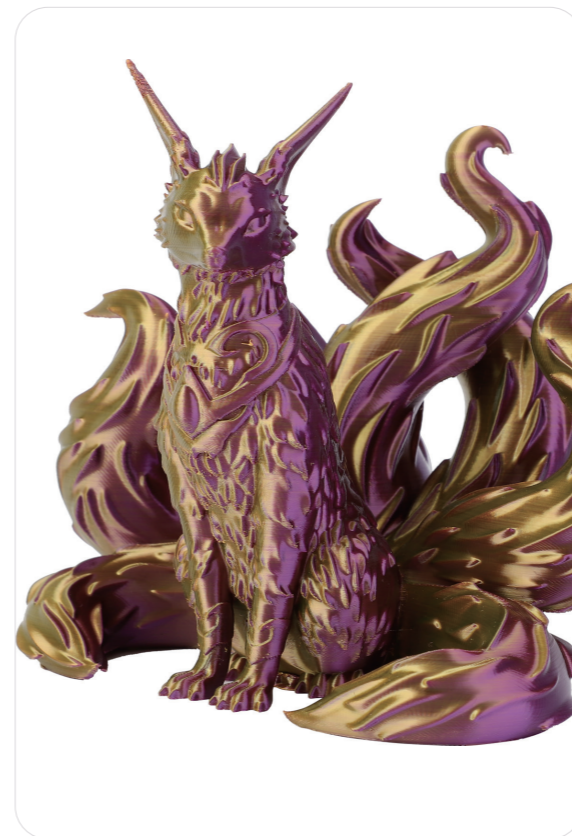
COSPLAY



Decorative Parts



Figurine Models



## PLA-Silk Magic

This is an aesthetic product modified from PLA material, featuring a dreamy and vibrant two-color appearance. The model exhibits different color representations when viewed from various angles, with a surface that possesses a silky luster and a smooth finish.



- Dual color cross section of filaments
- Dynamic silk like luster
- Highlight an elegant and profound visual hierarchy



Toys



Decorative



Figurine Models





## PLA-Silk Mystic

PLA-Silk Mystic with dynamic chromatic effects. The innovative cross-section design, featuring triaxial gradient technology, delivers mesmerizing color transitions that shift with viewing angles.



- Tri-color cross-section filaments
- Dynamic silk-like luster
- Featuring mysterious and shifting visual effects



Toys



Decorative Parts

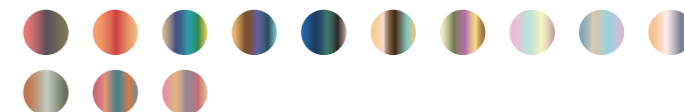


Cultural and Creative



## PLA-Silk Rainbow

PLA-Silk Rainbow with integrates three colors into a single filament. The rich color blend imparts a mysterious quality to printed models, revealing different color combinations from various angles. As the model rotates, the interaction of the three colors creates a striking dynamic effect. Additionally, it maintains excellent printing performance.



- Dynamic Silk-like Luster
- Rainbow Multi-color with 8-Meter Gradient
- Colors Shift with the Flow of Light



Cultural and Creative



Artworks



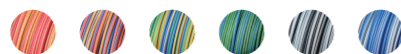
Film and Television Props





## PLA-Silk Candy

The silk candy lines have a silky luster and texture, complemented by a constantly changing candy color scheme, giving the model a lively and beautiful appearance, presenting a sense of dynamic beauty. Additionally, the model's surface is smooth without visible layer lines, featuring the easy printability characteristic of PLA.



- Dual/tri-color spiral gradient in filament cross-section
- Dynamic silk-like luster
- Abundant in dynamism and fun



Toys



Decorative Parts



Cultural and Creative



## PLA-Luminous

This product is modified based on PLA material and exhibits a beautiful and charming glow-in-the-dark effect in low light environments after exposure to ultraviolet light, enhancing the fun and playability of the printed model, thereby improving user experience.



- Remarkable luminous effect
- Rich in colors
- Simple and practical luminous effect



Toys

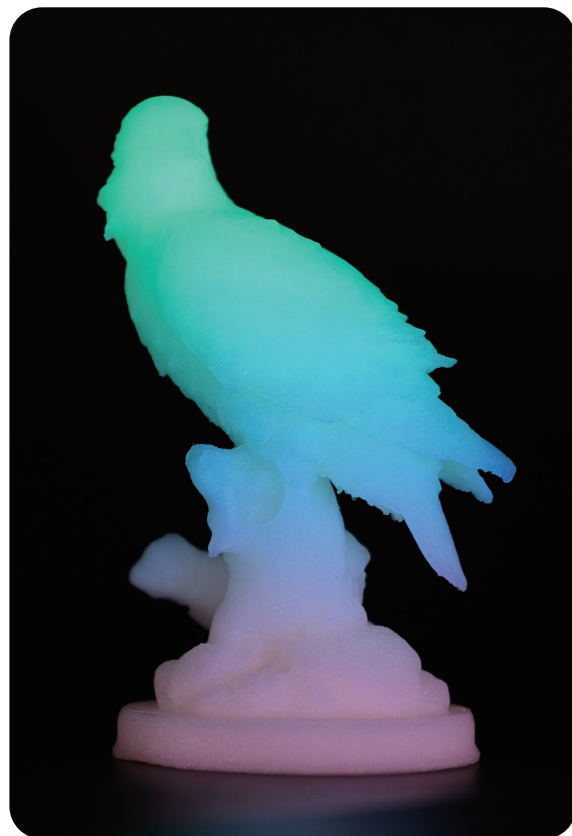


Decorative Parts



Light Sign





## PLA-Luminous Rainbow

This product is based on PLA glow-in-the-dark material and features a colorful and vibrant glow-in-the-dark rainbow appearance. After exposure to ultraviolet light, it can display a gradient of multiple colors in low-light environments, is easy to print, and has a smooth surface.



- Unique gradient luminous effect
- Rainbow Multi-color with 8-Meter Gradient
- Colors change with the flow of light



Toys



Light Sign



Figurine Models



## PET-Luminous

This product is derived from the modification of PET material. After exposure to ultraviolet light, it exhibits a significant and lasting glow-in-the-dark effect. This material inherits the robust and durable characteristics of the PET substrate, while the printing process is stable and easy, making it suitable for outdoor applications.



- PET substrate is strong and durable
- Long - lasting luminous effect
- Suitable for long - term use



Toys

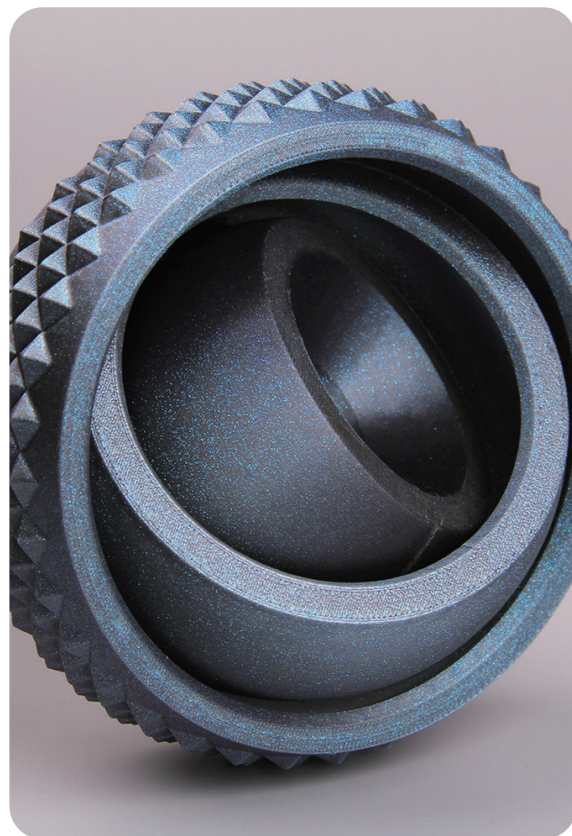


Decorative Parts



Light Sign





## PLA-Magic

The inspiration for PLA Magic Dual - color comes from the starry galaxy. In the dark, the dual - colors interweave like starlight. The appearance of the printed models is dreamy and illusory. Modified from PLA material, it also has the feature of easy printability.



- Dark filaments are matched with light - colored sparkles
- The flashing effect enhances the sense of luxury
- The dual - color gradient shows dynamics and a sense of hierarchy



Cultural and Creative



Anime Industry



Film and Television Props



## PLA-Twinkling

This product is based on PLA material. After adding fine shiny flakes to the transparent filaments, it shows a wonderful shiny effect. The layer lines are not visible, and it also has the advantages of easy printability, low warpage, and good forming effect.



- Transparent filaments are matched with silver - white flakes
- The perfect combination of transparency and flashing effect
- Fresh and bright



Toys



Decorative Parts



Cultural and Creative





## PLA-Twinkling Rainbow

This product is based on PLA material. Fine shiny flakes are added to the multi-colored transparent filaments. It has the characteristics of easy printability of PLA, low warpage, and good forming effect.



- Translucent multi-colored filaments with shimmering silver-white flakes
- 8-meter gradient with a sparkling texture
- Exudes a dreamy aesthetic



Toys



Decorative Parts



Film and Television Props



## PLA-Chameleon

PLA Chameleon is modified from PLA material. The filaments are treated with a special process to have a flowing-light effect, making them more vibrant than solid-color filaments. The light and shadow of the printed models flow and change, looking eye-catching from all angles. It also has the feature of easy printability of PLA.



- Fine flashing color - changing, silky texture
- Flowing light and shadow, three-dimensional presentation



Cultural and Creative



Anime Industry



Film and Television Props





## PLA-Marble

This product is crafted from PLA material, featuring a premium marble-like texture. The surface is smooth and free of visible layer lines, closely resembling genuine marble sculptures. The filaments offer excellent printability, with minimal warping and resistance to deformation.



- Simulates the authentic texture of natural marble
- Monochromatic filaments infused with fine black powder
- Achieves a realistic natural stone appearance



Artworks

cultural  
educationFilm and  
Television Props

## PLA-Rock

PLA Rock uses a matte formula with a rough, matte surface. Taking colors from natural rocks, it restores the rock layer texture through a two - color gradient, making the color change interesting. The filaments are strong and not easy to break.



- Imitates the texture of rock
- Dual-color layered spiral gradient
- High strength, resistant to brittleness



Decorative Parts



COSPLAY



Film and Television Props





## PLA-Wood

The PLA-Wood material employs a special formula, featuring a matte surface. The addition of wood fibers effectively replicates the texture and grain of natural wood. The color reproduction is highly accurate, and the printing performance is excellent.



- Natural wood effect
- Slightly abrasive surface texture
- Matte texture presents the texture of natural wood



imitation  
wood



Film and  
Television Props



Cultural and  
Creative



## PLA-Metal

This product is modified from PLA material and has the characteristic of easy printability of PLA. The printed models have a metallic luster and texture. A heavy - textured metallic appearance can be achieved without post - processing such as painting or polishing, and the surface is smooth without visible layer lines.



- Models are exquisite and textured
- Excellent simulation effect
- Presents an exquisite and textured metallic appearance



Decorative Parts



Artworks



Film and Television Props





## TPU-95A Rainbow

This filament is based on TPU - 95A, with the addition of color - gradient effects. It is firm and durable. Meanwhile, it balances high hardness and good resilience, and is easy to print. It is suitable for rapid prototyping design of sports products.



- Highly translucent and elastic filaments
- Combined with rainbow multi - color 5 - 10 meter gradient
- Demonstrates the perfect combination of vitality and flexibility



Shoe materials



sports goods



Cultural and Creative



## PLA-Clear

This filament has a high Translucent and clear colors. Different model thicknesses present different effects. It is easy to print, and the printed parts have a smooth surface, low shrinkage rate, and do not warp or crack.



- Translucent filaments
- Present a clear pure - color effect
- Rich in colors



Conceptual model



Cultural and Creative



Prototype design





## PLA-Clear Rainbow

This filament is based on PLA Translucent filament and adds multiple color combinations, presenting a gorgeous visual effect like a rainbow. Its color gradient is natural, and the printing performance is good. The model surface has excellent gloss, and the model is delicate without layer lines, making it suitable for creative design.



- Translucent filaments
- Combined with rainbow multi - color 5 - 10 meter gradient
- Flowing luster



Conceptual  
model



Cultural and  
Creative



Prototype  
design



## PLA-UV Color Change

The PLA light - sensitive filament is improved from traditional PLA, adding a light - sensitive color - changing property. When irradiated by ultraviolet light, the filament changes color spontaneously, which is highly interesting. It prints smoothly, has a smooth surface, and retains the easy - to - print characteristics of PLA.



- Color-change instantly under UV light exposure
- The depth of color change varies over time
- Suitable for creative applications



Cultural and  
Creative

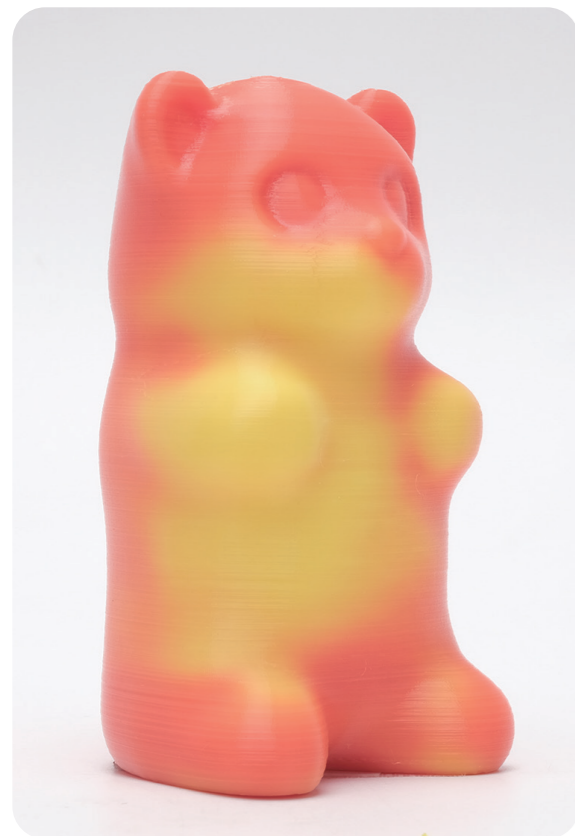


Anime  
Industry



Weather  
measurement toys





## TPU-Temp Color Change

This material changes color at a low temperature (28°C), changing color immediately when held. It has good flexibility and toughness, a hardness of 95A, and is easy to print. It can quickly produce complex elastic prototypes. Its finished products have good elasticity, are tear - resistant and wear - resistant, and are compatible with high - speed printing.



- The filaments change color when heated
- Show unique effects
- Adapt to variable environments



Cultural and Creative



Anime Industry

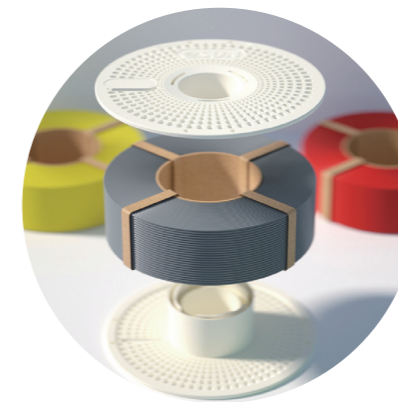


Film and Television Props



### eBox Pro

The storage box has heating, drying, and moisture/dust protection.



### eSpool+

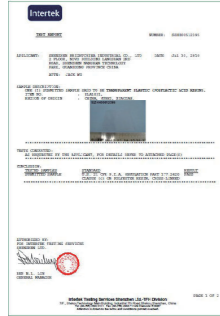
A reusable and detachable spool designed specifically for refilament.



### eVacuum Kit Pro3

A reusable vacuum storage bag set, equipped with an electric pump.

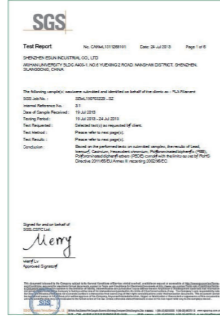




FDA CERTIFICATION



DIN CERTIFICATION



SGS CERTIFICATION



IOS9001 CERTIFICATION



UL94-V0 CERTIFICATION



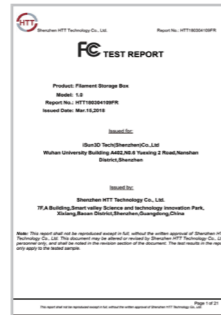
ROHS CERTIFICATION



EN71-3 CERTIFICATION



Reach CERTIFICATION



FCC CERTIFICATION



EMC CERTIFICATION

## Product Certifications of eSUN