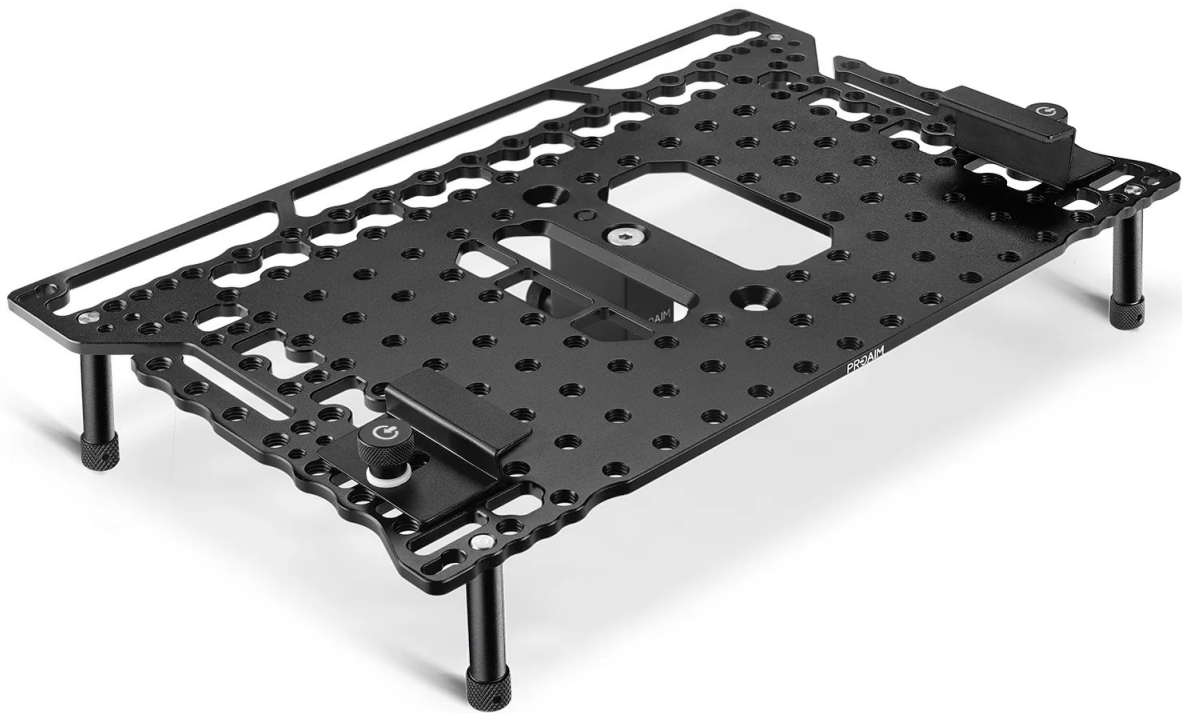




Universal Plus Laptop Workstation Platform (WKST-UPL-02)

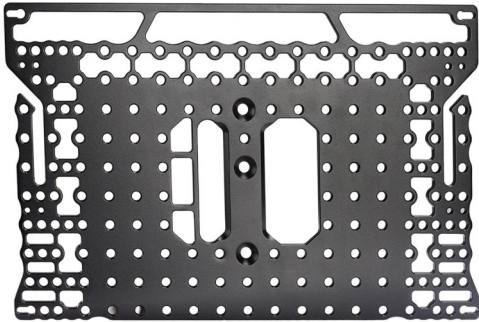


All rights reserved.

No part of this document may be reproduced, stored in a retrieval system, or transmitted by any form or by any means, electronic, mechanical, photo-copying, recording, or otherwise, except as may be expressly permitted by the applicable copyright statutes or in writing by the Publisher.

What's In The Box

Please inspect the contents of your shipped package to ensure you have received everything that is listed below.



Base Platform



C-Stand Clamp



2 x 25mm
L-brackets



2 x 12mm
L-brackets



6 x Locking Knobs



4 x Robust Legs



6 x Washers



2 x 1mm
Shim Set

2 x 3mm
Shim Set

2 x 6mm
Shim Set



1 x L-Type Allen Key
(Size : 7/32mm)

■ Universal Plus Laptop Workstation Setup

C-stand Clamp Mounting on Base Platform

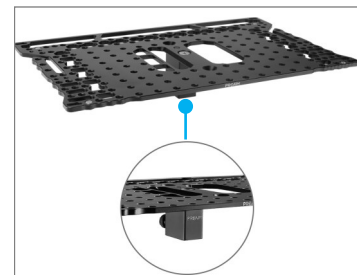
- Loosen the bolt from the C-stand clamp using a 7/32mm Allen key and remove it.



- Mount the Base Platform onto the C-stand adapter.
- Insert the bolts, ensuring they align with the threads.



- Now tighten the bolt using a 7/32mm Allen key.



Robust Legs Mounting

- Attach the robust legs to the corners of the workstation and secure them by twisting.

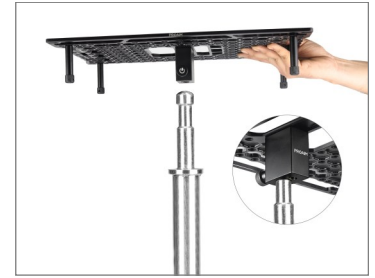
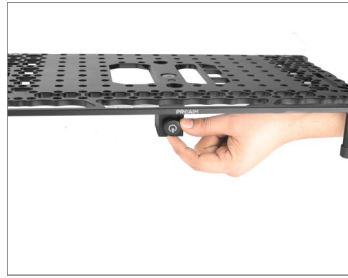


Feature: Four Support Feet allow for setting down the ring on flat ground without worrying about it falling.



C-stand Clamp Mounting on C-Stand

- Loosen the knob on the C-stand adapter and mount it onto the baby pin of the C-stand.



- Now, tighten the adapter's knob to secure it properly.



- Place Your laptop (Not Included) on the workstation.

Compatibility: Laptop with 10-25mm thickness.



Shims Mounting

- After placing the laptop on the workstation place the shims to increase the adjustable thickness of your laptop.
- Now place the L-bracket over the shims.



- Tighten and secure the L-brackets using the locking knob.

NOTE: Locking knobs are available in three sizes. You can use locking knobs according to the thickness of your laptop.



- Place Shims on both sides.
- Universal Laptop Workstation is now ready to use.



■ Tripod Ball Head Setup

- Loosen the knob of the ball head on the tripod stand (**Not Included**) and mount the base platform securely.



- After mounting the base platform, tighten the knob properly.
- Finally, the base platform is securely mounted on the tripod.



NOTE: This workstation easily accommodates a laptop with a thickness of 10-25mm. To ensure a secure setup, clamps are provided to affix the laptop to the platform.



Mounts to Tripod / Stand

Arca Mount, Detachable 5/8 Baby Pin Clamp



Arca Mount



5/8 Baby Pin

YOUR PROAIM UNIVERSAL PLUS LAPTOP WORKSTATION PLATFORM ALL DRESSED UP AND READY TO GO!



(SHOWN WITH OPTIONAL ACCESSORIES)

Warranty: We offer a one-year warranty on our products from the date of purchase. During this period, we will repair the product free of charge for labor or parts. The warranty does **not** cover transportation costs or products that have been misused or accidentally damaged. All warranty repairs are subject to inspection and evaluation by our team.

Liability: We are not liable for any damage caused by third-party products, mishandling during transit, accidents, misuse, neglect, or unauthorized servicing of the product.

Contact Us: In case of any dissatisfaction, please contact us immediately. We are committed to providing the utmost support and care to ensure your satisfaction with our product.