



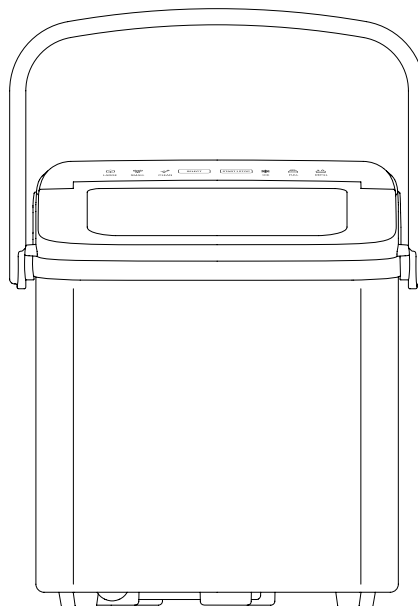
Dual-Size

COMPACT ICE MACHINE

USER GUIDE

- Safety Instructions
- Features
- Operating Instructions
- Troubleshooting/FAQs
- Cleaning and Maintenance
- Notes
- Terms and Conditions
- Warranty Registration

RJ56-BUL-12



COOKING FORWARD™

Welcome!

Whether this is your first Iceman™ appliance or you're already part of our family, we're happy to be chilling with you. With your new portable countertop Dual-Size Compact Ice Machine, you can keep cool and sip refreshing ice-cold beverages all day long—the unit easily makes a batch of ice in less than 10 minutes. Its compact size means it fits perfectly on the countertop so you can free up freezer space, while its attachable handle allows for convenient portability. Plus, its viewing window lets you see at a glance when ice is ready for use. With two ice sizes and an included scoop for serving, it's easy to chill your favorite foods and drinks. Whether you use it daily, for entertaining, or for tailgating and trips, you'll enjoy its simple operation and self-cleaning function.

We know you're excited to ice things down, but please take a few minutes to read our directions, safety instructions, and warranty information.

From our kitchen to yours,
The Iceman™ Team



READ ALL INSTRUCTIONS BEFORE USE
For your safety and continued enjoyment of this product, always
read the instruction manual before using.

CONTENTS

- 4** Safety Instructions
- 8** Features
- 10** Operating Instructions
- 14** Troubleshooting/FAQs
- 16** Cleaning and Maintenance
- 18** Notes
- 20** Terms and Conditions
- 22** Warranty Registration

SAFETY INSTRUCTIONS

IMPORTANT SAFEGUARDS

WARNING: When using electrical appliances, basic safety precautions should always be followed, including:

1. **Read all instructions.**
2. **DANGER!** To protect against the risk of electric shock, do not immerse the cord, plug, or any part of the unit in water or other liquid.
3. Close supervision is necessary when using this appliance near children. This appliance is not suitable for use by children.
4. Never leave an appliance unattended while in use.
5. This appliance is not intended for use by persons (including children) with reduced physical, sensory or mental capabilities, or lack of experience or knowledge, unless they are closely supervised and instructed concerning use of the appliance by a person responsible for their safety
6. Do not place an appliance on or near a hot gas or electric burner, or in a heated oven. Do not place on top of any other appliance.
7. Do not let the power cord of the appliance hang over the edge of a table or countertop or touch any hot surface.
8. Do not operate any electrical appliance with a damaged cord or plug or after the appliance malfunctions or has been dropped or damaged in any manner. If damage is suspected, contact Chefman® Customer Support for examination, repair, or electrical or mechanical adjustment.

SAFETY INSTRUCTIONS

IMPORTANT SAFEGUARDS

9. Unplug the appliance from the power outlet when not in use, before putting on or taking off attachments, and before cleaning.
10. The use of accessory attachments that are not recommended by the manufacturer may cause fire, electric shock, or injury.
11. Avoid contact with moving parts when the unit is in operation.
12. Never touch the cooling elements when the unit is in operation.
13. Do not use outdoors.
14. Do not use an appliance for anything other than its intended use.

**SAVE THESE INSTRUCTIONS
FOR HOUSEHOLD USE ONLY**

SAFETY INSTRUCTIONS

IMPORTANT SAFEGUARDS

WARNING: Improper use of the grounding plug can result in electric shock.

GROUNDING INSTRUCTIONS

This appliance must be grounded. In the event of an electrical short circuit, grounding reduces the risk of electric shock by providing an escape wire for the electric current. To protect against electrical shock, this appliance is equipped with a cord having a 3-prong grounding-type plug for insertion into a proper grounding-type electrical outlet.

DO NOT alter the plug for use in a 2-prong outlet. If the plug will not fit into an outlet, have a proper outlet installed by a qualified electrician.

SAFETY INSTRUCTIONS

IMPORTANT SAFEGUARDS

POWER CORD SAFETY TIPS

1. Never pull or yank on the cord or the appliance.
2. To insert the plug, grasp it firmly and guide it into the outlet.
3. To disconnect the appliance, grasp the plug and remove it from the outlet.
4. Never use the product if the power cord shows signs of abrasion or excessive wear. Contact Chefman® Customer Support for additional guidance and support.
5. Never wrap the cord tightly around the appliance, as this could place undue stress on the cord where it enters the appliance and cause it to fray and break.

DO NOT OPERATE THE APPLIANCE IF THE POWER CORD SHOWS ANY DAMAGE OR IF THE APPLIANCE WORKS INTERMITTENTLY OR STOPS WORKING ENTIRELY.

*California Proposition 65:
(Applicable for California Residents only)*

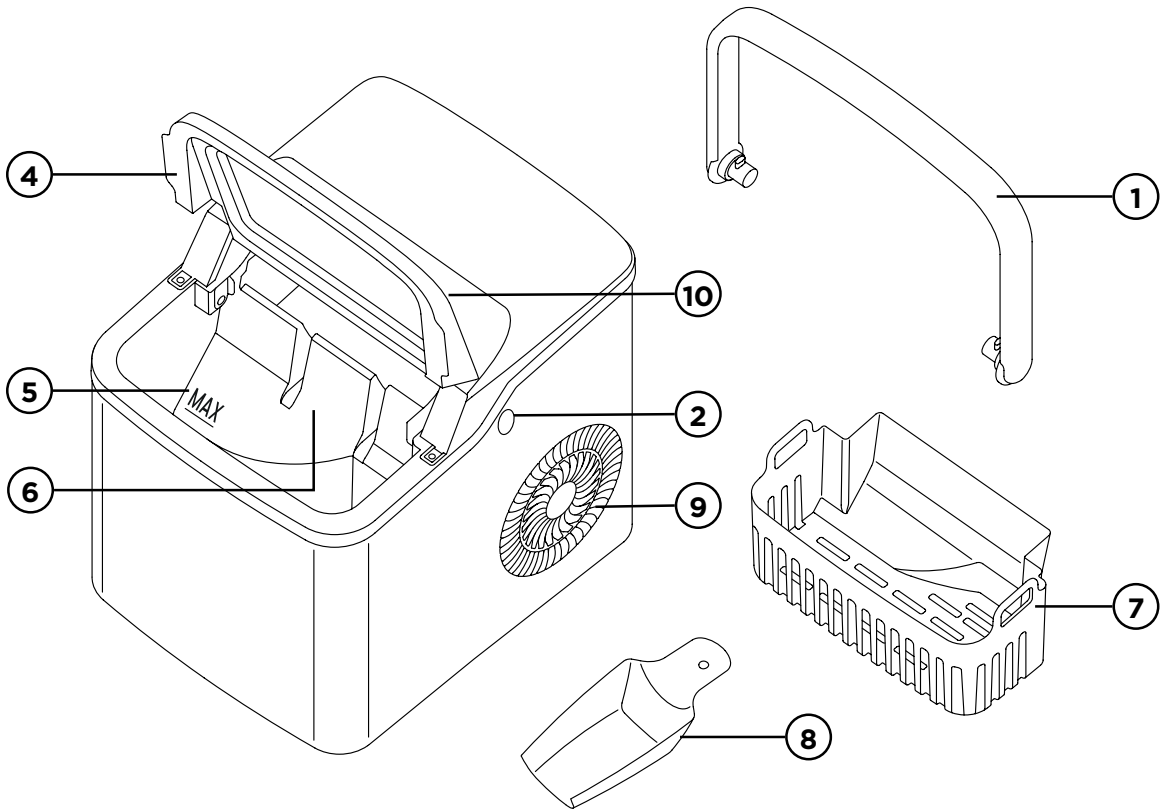


WARNING:
Cancer and Reproductive Harm -
www.P65Warnings.ca.gov



Do not place the appliance on a stovetop or any other heatable surface, even if stovetop is not on. Doing so is a fire hazard.

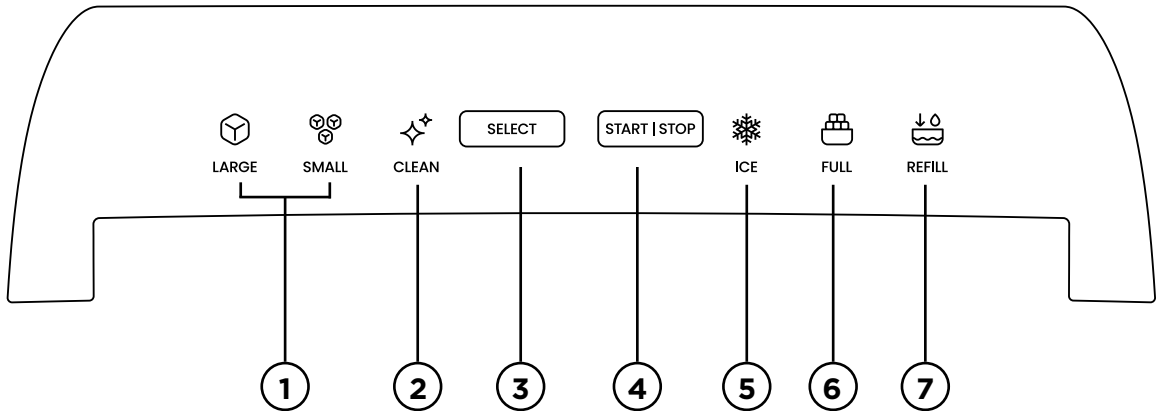
FEATURES



- | | |
|--|--|
| 1. Attachable Handle | 6. Ice Tray (inside) |
| 2. Handle Attachment Ports (on sides) | 7. Removable Ice Basket |
| 3. Water Drain Plug
(on bottom, not shown) | 8. Ice Scoop |
| 4. Front Cover with Viewing Window | 9. Air Vents |
| 5. 1.2L Water Reservoir with MAX Fill
Line (inside) | 10. Control Panel (see following page) |

FEATURES

CONTROL PANEL



1. **LARGE and SMALL Indicator Lights**—Illuminate when selected
2. **CLEAN Indicator Light**—Blinks when selected, illuminates solid when self-cleaning function is underway
3. **SELECT Button**—Use to select ice sizes and self-cleaning function
4. **START-STOP Button**—Starts or stops ice-making and self-cleaning function
5. **ICE Indicator Light**—Illuminates during ice-making
6. **FULL Indicator Light**—Illuminates when ice basket is full
7. **REFILL Indicator Light**—Illuminates when water in reservoir is empty or low

OPERATING INSTRUCTIONS

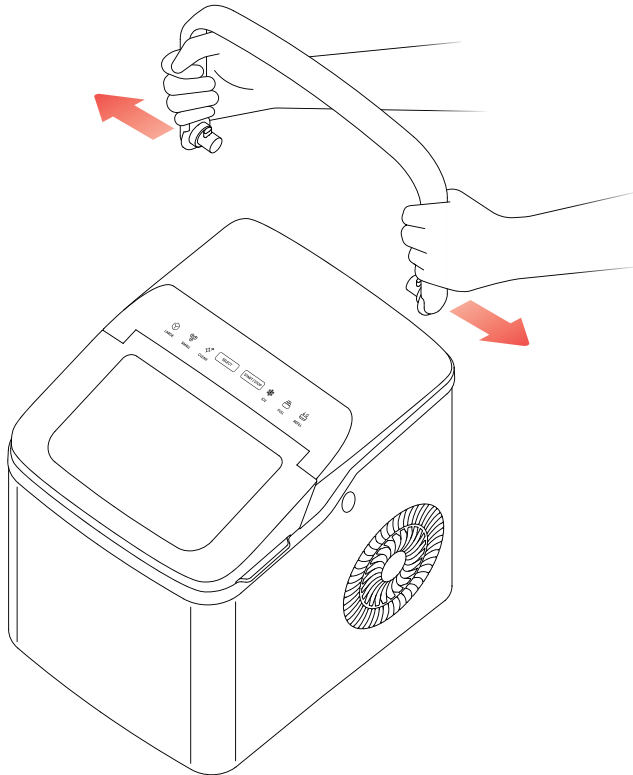
BEFORE FIRST USE

For best results, follow these steps before using your ice maker for the first time.

1. Remove all packaging materials, such as plastic bags and foam inserts. Check to ensure that all parts and accessories are included before throwing out packaging.
2. Read and remove any stickers on the ice maker except for the rating label, which should remain on the unit.
3. Wipe down the unit's exterior and reservoir with a damp cloth or paper towel and dry thoroughly. Wash the ice basket and scoop with a sponge and warm, soapy water, and dry completely. **CAUTION:** Never immerse the ice maker, its base, cord, or plug in water or any other liquid, and do not use scouring pads or abrasive cleaners.
4. Place the ice maker on a level surface away from direct sunlight and other heat sources. Keep at least 6 inches of clearance on all sides of the unit to ensure proper ventilation. **NOTE:** If using the unit outdoors, be cautious of weather and extreme temperatures (ideal ambient temperature is between about 50°F/10°C and 90°F/32°C), as these can affect the ice-making process or damage the unit.
5. **IMPORTANT:** Wait 2 hours for the refrigerant fluid to settle before plugging the unit in for the first time.
6. Before making ice for the first time, prime the ice maker by running the self-cleaning function (see Cleaning and Maintenance on p. 17).

OPERATING INSTRUCTIONS

7. If desired, attach the handle for portability. Grasp both sides of the handle and gently pull outward. Align the knobs on the inner sides of the handle to the corresponding attachment ports on the sides of the ice maker. Press firmly inward until the handle knobs lock into the attachment ports. Make sure the handle is secure by pulling slightly upward as if to raise the unit. If the handle remains, it is properly attached. **NOTE:** To remove, gently pull the sides of the handle outward until the knobs release from the ports.



OPERATING INSTRUCTIONS

HOW TO USE THE ICE MAKER

The ice maker completes a batch of ice in less than 10 minutes and is equipped with an attachable handle for easy portability, creating a quick and convenient ice-making experience.

1. **Make sure the drain plug is closed.** If it is not, push it firmly into place.
2. **Set the ice maker on a hard, level surface** away from any sources of heat. Leave at least 6 inches of clearance on all sides of the unit for proper ventilation. **NOTE:** If the ice maker has been moved since its last use, let it sit for 30 minutes before plugging it in, to allow the refrigerant fluid to settle.
3. **Plug the power cord into a grounded outlet.** The unit will enter standby mode with the LARGE indicator light blinking and the ICE indicator off, signaling that the unit is plugged in but not yet in ice-making mode.
4. **Fill the water reservoir:** Open the front cover and gently lift out the ice basket. Fill the reservoir with filtered or bottled water up to but not exceeding the MAX fill line. To ensure sanitation, change the water in the reservoir once a day. **CAUTION:** Only use cold to room temperature water. Hot water can damage the ice maker.
5. **Replace the ice basket** and close the front cover.
6. **Start the ice maker:** Press the SELECT button to choose the desired ice size (small or large) and the indicator light for the selected size will illuminate. Press the START-STOP button. The ICE indicator light will illuminate, indicating that ice-making has started and the unit is no longer in standby mode. **NOTE:** The ice size can be changed while ice-making is underway. Simply press SELECT to choose a different size.

OPERATING INSTRUCTIONS

7. **The ice maker will run continuously**, making batches of 9 pieces of ice until it is turned off or the basket is full. Each cycle lasts approximately 7-15 minutes, depending on ambient temperature and water temperature.
8. **Use the ice scoop to remove and serve ice.** The ice maker will not keep ice cold for extended periods of time. Store extra ice in the freezer for later use, if desired, or allow the unused ice to melt. Melted ice will drip back into the water reservoir and be reused for the next ice-making cycle.
9. **When the ice basket is completely full** (which takes about 6-10 cycles depending on the ice size), the FULL indicator light will illuminate, the ICE indicator light will shut off, and ice-making will stop. When ice is removed (or melted ice drips back into the reservoir), ice-making will resume automatically. **NOTE:** You do not need to wait for the ice basket to be completely full before removing ice. Ice can be used after each cycle, if desired.
10. **If there is not enough water** to complete an ice-making cycle, the REFILL indicator light will illuminate, the ICE indicator light will shut off, and ice-making will stop. Refill the reservoir, then select a size and press the START-STOP button to resume ice-making. **NOTE:** If water is added but the START-STOP button is not pressed, ice-making will automatically restart after 20 minutes.
11. **If using the ice maker daily**, conserve energy by unplugging it or switching it to standby mode overnight and when not needed for immediate use. (To switch to standby mode when ice-making is underway, press the START-STOP button.)

TROUBLESHOOTING/FAQS

Why is the REFILL indicator light on when the water reservoir is full?

The water screen at the bottom of the water reservoir may be blocked. Follow the instructions for the self-cleaning feature on p. 17 to fix.

Why is the FULL indicator light on when the ice basket is not full?

The small infrared sensors located on the inner sides of the ice tray are not working properly. Wipe away any foreign substances that may be blocking or covering them and restart the ice maker by unplugging or pressing START-STOP.

Why is the ice clumping together?

The unit is taking too long to make ice and/or the water temperature is too low. Press START-STOP to stop the ice-making cycle and remove any accumulated ice. Empty the water reservoir and refill with cool or room temperature water. Restart the unit and begin a new ice-making cycle.

Why is the ice-making cycle activated but no ice is being produced?

The ambient temperature is too high and/or the water is too hot. Move the ice maker to a cooler environment (between approximately 50°F/10°C and 90°F/32°C) and fill the water reservoir with cold water.

TROUBLESHOOTING/FAQS

Why is the unit producing low-quality (misshapen or broken) ice?

This can be due to poor heat distribution. For proper ventilation, ensure there is empty space (at least 6 inches) on all sides of the ice maker. Alternatively, the ambient or water temperature may be too high. Move the ice maker to a cooler area and refill the water reservoir with cold water.

Why does the ice have a strange taste?

The water is not fresh, or the unit needs to be cleaned. Refill the reservoir with clean drinking water regularly (at least once per day). If the issue persists, follow the directions in Cleaning and Maintenance on p. 17, and use the self-cleaning feature to sanitize the ice maker's interior parts.

Why is the water pump making noise and/or not pumping water?

The water pump (located inside the unit) is clogged, preventing water from pumping through smoothly and/or causing air to become trapped in the pump. The unit should be cleaned at least once per week to avoid buildup and to ensure that the parts continue to function properly. Use the self-cleaning function on p. 17 to unclog the pump, adding a small amount of mild dish soap or white vinegar, if necessary.

If a problem or issue persists after following the instructions on the Troubleshooting pages, contact Chefman® Customer Support at support@chefman.com for further assistance.

CLEANING AND MAINTENANCE

To keep your ice tasting fresh and your ice maker in prime condition, we recommend changing the water in the reservoir once a day and cleaning your ice maker at least once per week.

1. Make sure the ice maker is unplugged and at room temperature.
2. If residual water is in the ice tray (located above and behind the reservoir), gently push back the tray so the water can drain into the reservoir.
3. Place the unit over a proper drainage area and remove the ice basket. Pull out the drain plug on the bottom of the unit to empty the water from the reservoir. Wipe down the interior with a cloth or paper towel soaked in a mixture of water and vinegar. Rinse thoroughly and dry completely. Replace the drain plug, pushing it firmly into place.
4. Gently wipe down the exterior with a damp cloth or paper towel, using a mild dishwashing soap, if necessary. Wash the removable ice basket and scoop with a sponge and warm, soapy water, and dry completely. The ice maker and its accessories are not dishwasher safe. **CAUTION:** Never immerse the ice maker, its base, cord, or plug in water or any other liquid, and do not use scouring pads or abrasive cleaners.
5. To clean the ice maker's internal parts, follow the instructions on p. 17 to activate the self-cleaning feature when needed.
6. Always empty the water reservoir and dry completely for storage or if the ice maker will not be used for an extended period of time. This will prevent mold and mildew from forming.

CLEANING AND MAINTENANCE

HOW TO USE THE SELF-CLEANING FEATURE

The ice maker is equipped with a self-cleaning feature to ensure easy and complete sanitation; this feature should be used at least once per week.

1. To activate self-cleaning, the ice maker must be in standby mode. Enter standby mode by doing one of the following: 1) If the ice maker is unplugged, plug in the unit; the LARGE indicator light will blink and the ICE indicator light will be off, indicating that the unit is in standby mode; 2) If the ice maker is plugged in and on (or in the middle of) an ice-making cycle, press START-STOP and the ICE indicator light will turn off. This means the ice maker has entered standby mode.
2. If necessary, remove any ice and empty the water reservoir by pulling out the drain plug. Replace the drain plug, pushing it in firmly to ensure it is closed properly.
3. Fill the water reservoir to the MAX line with clean water.
4. Press the SELECT button until the CLEAN light blinks, then press START-STOP. The CLEAN light will turn solid and the self-cleaning cycle will begin. The cleaning function runs for 6 to 8 minutes.
5. Empty the water reservoir by pulling out the drain plug. Follow the instructions to begin making ice, or dry completely for storage.

NOTES

This image shows a blank sheet of white paper with horizontal ruling lines. The lines are evenly spaced and run across the width of the page. There are no margins, text, or other markings on the paper.

[illegible]

TERMS AND CONDITIONS

Limited Warranty

RJ Brands, LLC d/b/a Chefman® offers a limited 1-year Warranty (the “Warranty”) available on sales through authorized distributors and retailers only. Please note that this Warranty becomes valid from the date of initial retail purchase and that the Warranty is non-transferable and applies only to the original purchaser.

This Warranty is void without proof of purchase within the United States and Canada. Please be aware that this Warranty supersedes all other warranties and constitutes the entire agreement between the consumer and Chefman®. Any changes to the Terms and Conditions of this Warranty must be in writing, signed by a representative of Chefman®. No other party has the right or ability to alter or change the Terms and Conditions of this Warranty.

We may ask you to please submit, via email, photos and/or video of the issue you are experiencing. This is to help us better assess the matter and possibly offer a quick fix. Photos and/or video may also be required to determine Warranty eligibility.

We encourage you to register your product. Registering can make the Warranty process easier and can keep you informed of any updates or recalls on your product. To register, follow the directions on the Chefman® Warranty Registration page in the Chefman® User Guide. Please retain your proof of purchase even after registering. In the event that you do not have proof of your purchase date, we may declare your Warranty void or we may, at our sole discretion, apply the date of manufacture as the purchase date for purposes of this Warranty.

TERMS AND CONDITIONS

Limited Warranty

WHAT THE WARRANTY COVERS

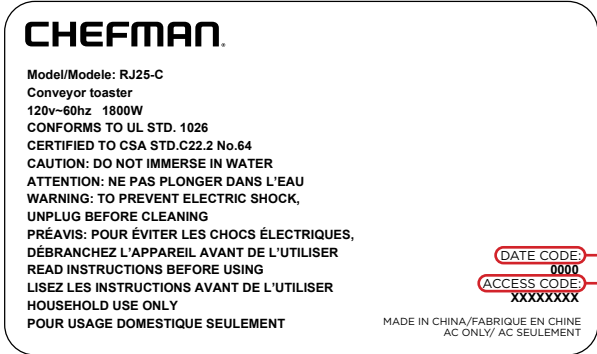
- **Manufacturer Defects** – Chefman® products are warranted against defects in material and workmanship, under normal household use, for a period of 1 year from the date of purchase when used in accordance with the directions listed in the Chefman® User Guide. If your product does not work as it should, please contact Customer Support at support@chefman.com so that we may assist you.

THIS WARRANTY DOES NOT COVER

- **Misuse** – Damage that occurs from neglectful or improper use of products, including, but not limited to, damage that occurs as a result of usage with incompatible voltage, regardless of whether the product was used with a converter or adapter. See Safety Instructions in the Chefman® User Guide for information on proper use of product;
- **Poor Maintenance** – General lack of proper care. We encourage you to take care of your Chefman® products so that you may continue to enjoy them. Please see Cleaning and Maintenance directions in the Chefman® User Guide for information on proper maintenance;
- **Commercial Use** – Damage that occurs from commercial use;
- **Normal Wear and Tear** – Damage or degradation expected to occur due to normal use over time;
- **Altered Products** – Damage that occurs from alterations or modifications by any entity other than Chefman® such as the removal of the rating label affixed to the product;
- **Catastrophic Events** – Damage that occurs from fire, floods, or natural disasters; or
- **Loss of Interest** – Claims of loss of interest or enjoyment.

CHEFMAN® WARRANTY REGISTRATION

What do I need to register my product?



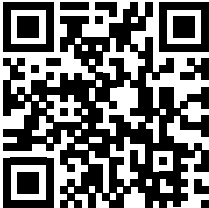
- Contact Information
- Model Number
- Proof of Purchase
(online confirmation,
receipt, gift receipt)
- Date Code
- Access Code

NOTE: Label depicted here is an example.

How do I register my product?

All you need to do is fill out a simple Chefman® registration form. You can easily access the form in one of the two ways listed below:

1. Visit Chefman.com/register.
2. Scan the QR code to access site:



CHEFMAN® WARRANTY REGISTRATION

For product information, visit Chefman.com.

EXCEPT WHERE SUCH LIABILITY IS REQUIRED BY LAW, THIS WARRANTY DOES NOT COVER, AND CHEFMAN® SHALL NOT BE LIABLE FOR, INCIDENTAL, INDIRECT, SPECIAL, OR CONSEQUENTIAL DAMAGES, INCLUDING WITHOUT LIMITATION, DAMAGE TO, OR LOSS OF USE OF THE PRODUCT, OR LOST SALES OR PROFITS OR DELAY OR FAILURE TO PERFORM THIS WARRANTY OBLIGATION. THE REMEDIES PROVIDED HEREIN ARE THE EXCLUSIVE REMEDIES UNDER THIS WARRANTY, WHETHER BASED ON CONTRACT, TORT OR OTHERWISE.

Chefman® is a registered trademark of RJ Brands, LLC.
Cooking Forward™ is a trademark of RJ Brands, LLC.
Iceman™ is a trademark of RJ Brands, LLC.



@mychefman



www.chefman.com/iceman

ICEMAN™ designed by ©CHEFMAN 2023