



# Nintendo Switch OLED Model Kickstand Hinges Replacement

Use this guide to replace the kickstand hinges...

Written By: Alex Diaz-Kokaisl



# INTRODUCTION

Use this guide to replace the kickstand hinges in your Nintendo Switch OLED.

The Switch OLED's dock uses JIS screws, but you can use a Phillips screwdriver in a pinch. Be very careful not to strip the screws. iFixit's Phillips bits are designed to be cross-compatible with JIS-style screws.



## TOOLS:

- [Phillips #00 Screwdriver](#) (1)
- [Tri-point Y00 Screwdriver](#) (1)
- [Spudger](#) (1)
- [Tweezers](#) (1)

*Optional*



## PARTS:

- [Nintendo Switch OLED Console Kickstand Hinges](#) (1)

## Step 1 — Release the Joy Con controller locking tabs



- ⓘ Before you begin this repair, make sure the device is completely powered off.
- Press and hold down the small round button on the back of the Joy Con controller.
- While you hold down the button, slide the controller upward.

## Step 2 — Remove the Joy Con controllers



- Continue sliding the Joy Con upward until it's completely removed from the console.
- ⓘ Repeat this same process for the other Joy Con.

### Step 3 — Remove the top screw



- Use a Phillips driver to remove the 2 mm-long screw securing the top of the rear case to the frame.
- i To prevent these tight screws from [stripping](#), apply firm downward force, work slowly, and try another JIS or Phillips driver if the screws won't come out.

### Step 4 — Remove the bottom screws



- Use a Phillips driver to remove the two 2 mm-long screws securing the bottom of the rear case to the frame.

## Step 5 — Remove the right screw



- Use a Phillips driver to remove the 3.8 mm screw securing the right Joy-Con sensor rail to the rear case.

## Step 6 — Remove the left screws



- Use a Phillips driver to remove the two 3.8 mm screws securing the left Joy-Con sensor rail to the rear case.

## Step 7 — Open the kickstand



- Use your finger to flip up the kickstand on the back of the device.
- ⓘ If there's a microSD card in the microSD card slot, remove it now before you continue to the next step.

## Step 8 — Remove the back-side screws



- Use a Y00 screwdriver to remove the two 4.3 mm screws securing the rear case to the frame.

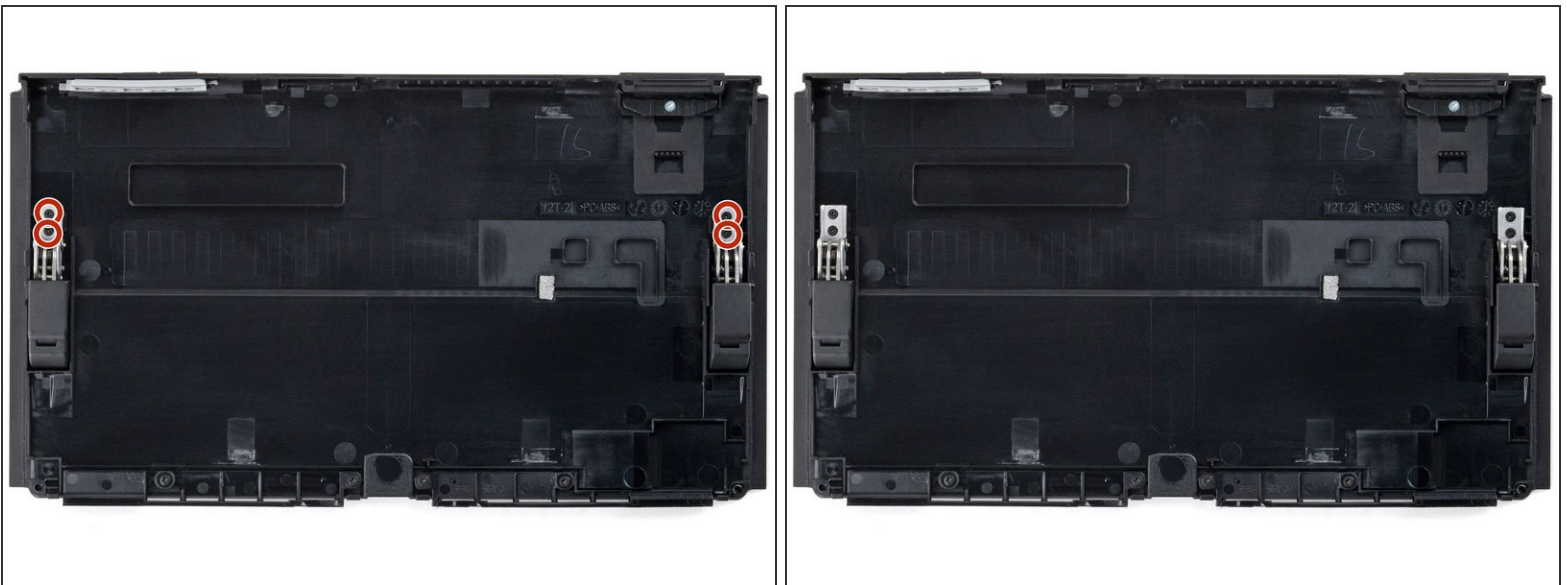


## Step 9 — Remove the rear case



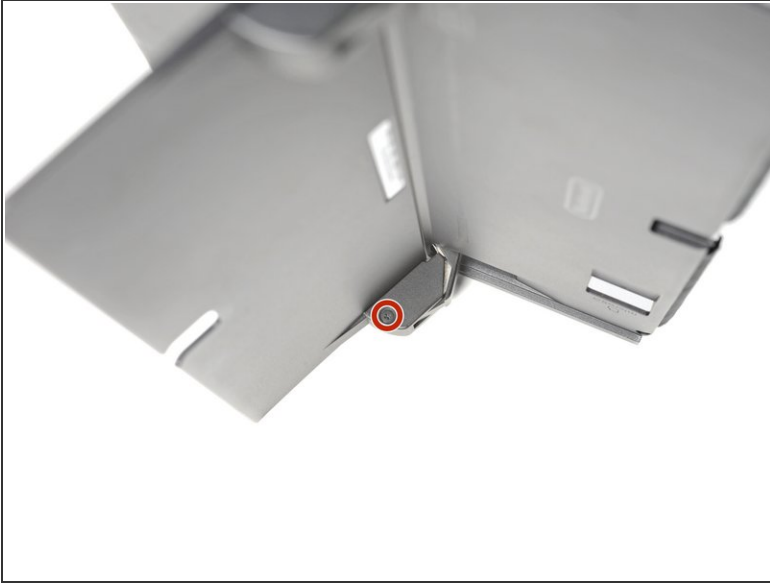
- Lift the rear case up from the top of the device and remove it.

## Step 10 — Unfasten the kickstand



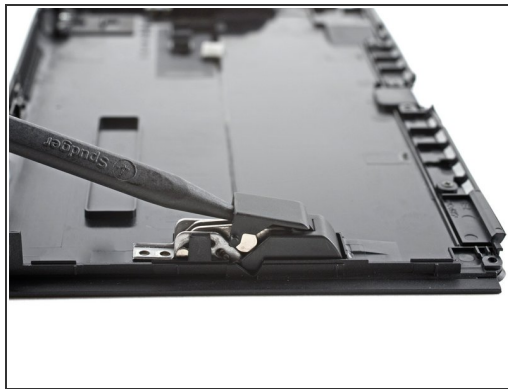
- Use Phillips driver to remove the four 2.1 mm screws securing the kickstand to the rear case.

## Step 11 — Unfasten the hinge bracket



- Open the kickstand.
- Use a Phillips driver to remove the 1.7 mm screw located on the side of the hinge bracket.
- ⓘ Repeat this same process for the other hinge bracket.

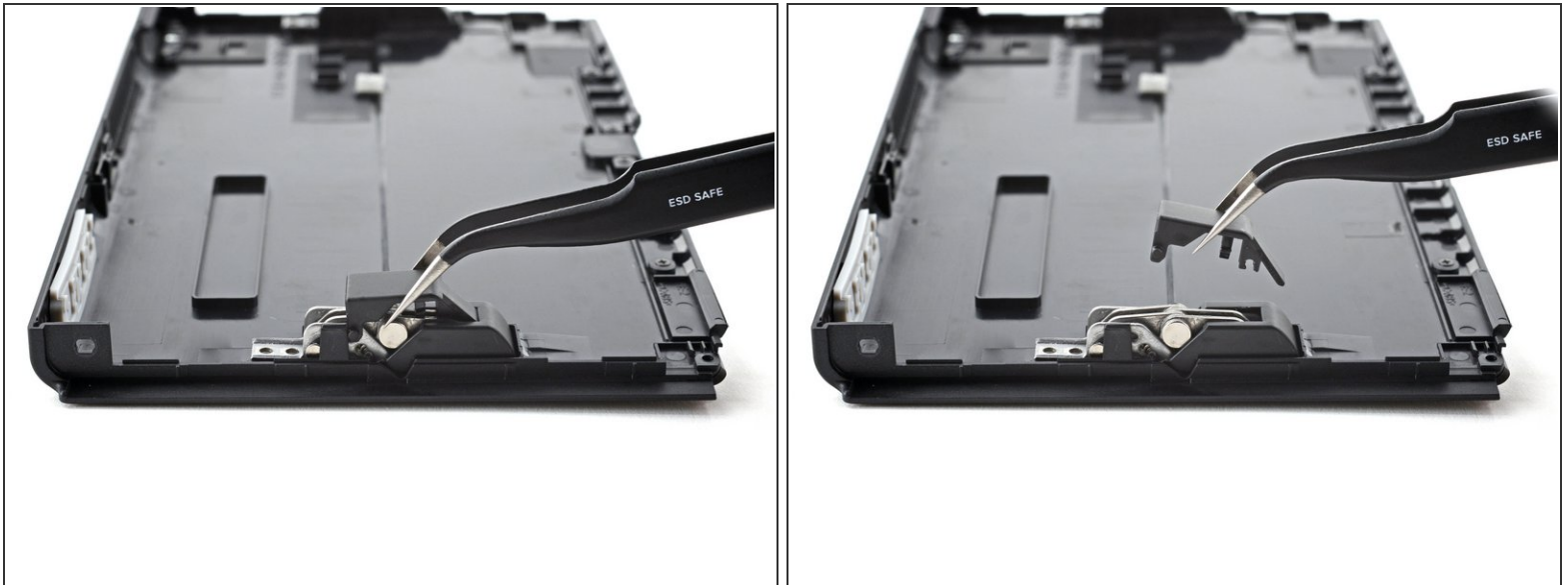
## Step 12 — Remove the hinge bracket



- Close the kickstand.
- Insert the point of spudger between the hinge bracket and the top of the hinge.
- Pry upward to release the bracket from its plastic clips.



## Step 13



- Use tweezers, or your fingers, to remove the hinge bracket.
- ⓘ Repeat this process for the other hinge bracket.

## Step 14



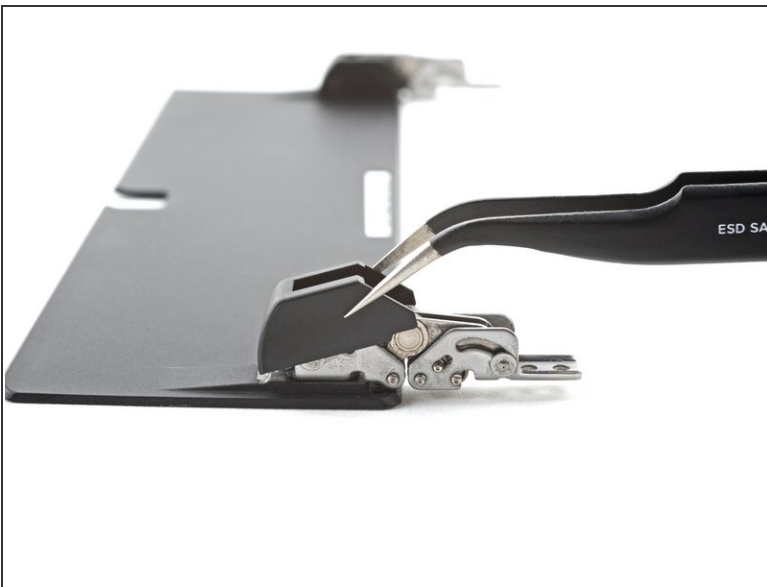
- Remove the kickstand from the rear case.

## Step 15 — Remove the hinge bracket



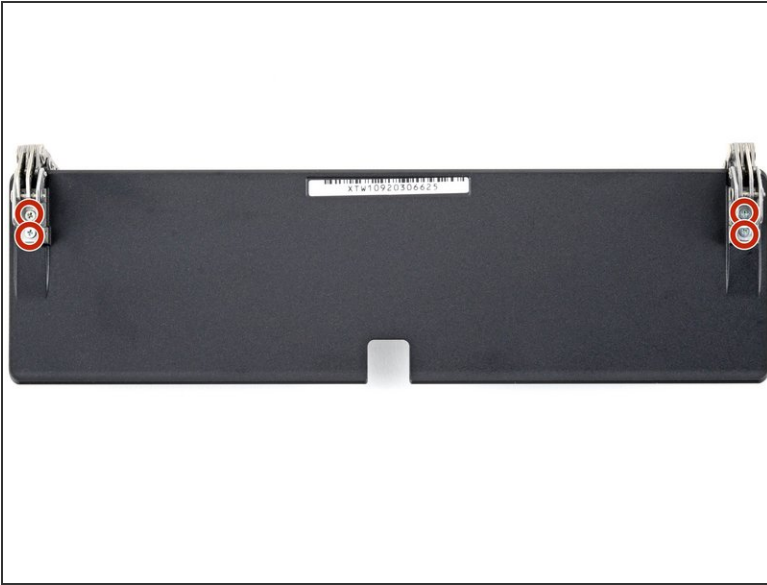
- Insert the flat of a spudger between the hinge bracket and the bottom of the hinge.
- Pry upward to release the hinge bracket from its plastic clips.

## Step 16



- Use tweezers, or your fingers, to remove the hinge bracket.
- ⓘ Repeat this process for the other hinge bracket.

## Step 17 — Unfasten the kickstand hinges



- Fold the hinges around the kickstand to reveal the screws.
- Use a Phillips driver to remove the four 2.3 mm screws securing the hinges to the kickstand.

## Step 18 — Remove the hinges



- Use tweezers, or your fingers, to remove the hinge.
- Repeat this process for the other hinge.

To reassemble your device, follow these instructions in reverse order.

Compare your new replacement part to the original part—you may need to transfer remaining components or remove adhesive backings from the new part before you install it.

Repair didn't go as planned? Try some [basic troubleshooting](#), or ask our [Nintendo Switch OLED Answers community](#) for help.