

**GB** Thank you for choosing a HabiStat product. Please read the instructions carefully and refer to diagrams before use. Retain all documents for future reference.

The HabiStat Rainmaker Pro uses any reservoir **F** and delivers a spray of rain into an enclosure by using the multi-directional nozzles **3**. These should be positioned on the inside of the enclosure towards the top by using the suction pads **A**. Please refer to the separate HabiStat Digital Seconds Timer **6** instructions for setup and programming.

The main unit **1** should be placed on a stable, hard surface or wall mounted ensuring all four feet are connected to the surface **D**. The Rainmaker Pro works more efficiently in an elevated position above the chosen reservoir **F** (<2m) but below the enclosures you are supplying 'Rain' to. Cut the black tubing to length **5** and connect to the blue connectors on the nozzles **3** and feed the black tubing into the HabiStat Rainmaker Pro 'OUT' connector seal **C**. Join by pushing the connector seal down and feeding the end of the black tube as far down as it will go (roughly 1 to 2 cm) and release the connector. This will secure the black tube in place. If other nozzles are needed (within the original enclosure or in additional enclosures), cut a suitably sized length of tubing for use and attach nozzles as required using the above method. Use the end cap **4** after your last nozzle is in place.

The HabiStat Rainmaker Pro requires an external reservoir **F** for the Main Pump Units 'IN' tube **B** to be submerged in. Connect the water Filter **2** to the end of the hose that will sit in the reservoir. This will keep the black tubing submerged and fill your chosen reservoir with water prior to its first use. Join the power cables **3** from the main unit **1** to the Power adaptor **7**. The unit is programmed and powered on/off via the supplied Digital Timer **6**. Plug the timer **6** into the wall socket and adjust as required. (Please refer to the Digital Timer Instructions for setup / programming instructions). Once this is complete, plug in the HabiStat Rainmaker Pro to the HabiStat Digital Seconds Timer.

**Warning:**

- Only use clean water in your reservoir.
- Before connecting the device, confirm the voltage first. It can only be connected to power with 100-240V – 50/60HZ.
- Do not let the unit run dry as this may damage the pump.
- Please clean the Filter frequently to avoid any loss of performance.
- For indoor use only.
- The main unit and power adapter should not be immersed in water and positioned to avoid splashing.
- Ensure any necessary repairs are carried out by the manufacturer or service agent.
- The manufacturer shall not be responsible for any damage to the product or accidents caused by the user's failure to comply with the requirements listed.

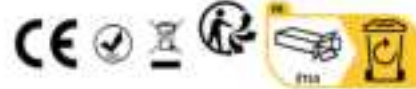
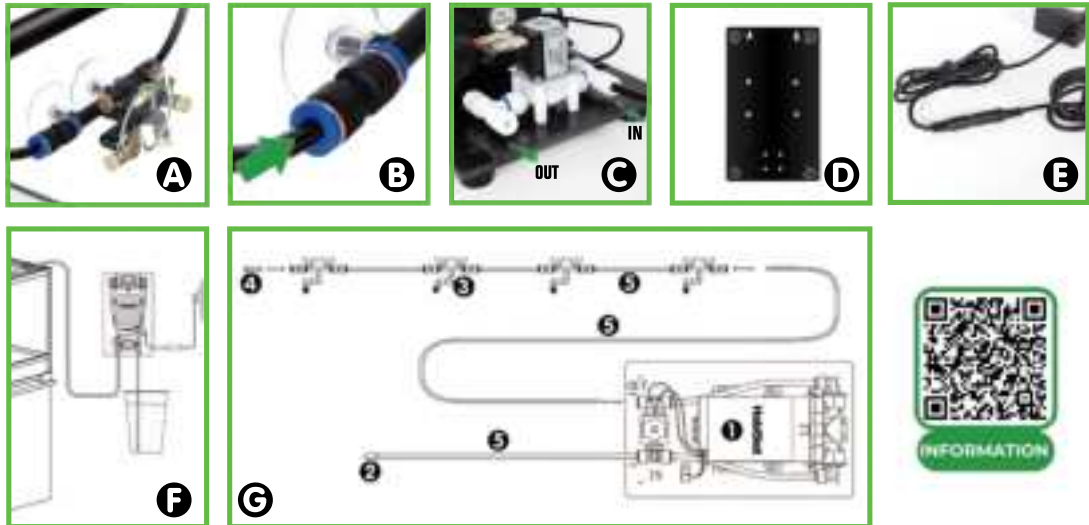
# HabiStat

## Rainmaker Pro Instruction Manual



- |                         |                            |                         |
|-------------------------|----------------------------|-------------------------|
| <b>1</b> Main Unit      | <b>2</b> Filter            | <b>3</b> 4 x Nozzles    |
| <b>4</b> Tubing end cap | <b>5</b> 5.5M Black Tubing | <b>6</b> Seconds Timer* |
| <b>7</b> Power Adaptor* |                            |                         |

\*Regional variations available



Monkfield Nutrition Ltd,  
Arthur Rickwood Farm, Chatteris Rd,  
Mepal, Ely, Cambs, CB6 2AZ, UK  
www.habistat.com  
info@habistat.com

EU Authorised Representative:  
Comply Express Lda,  
StartUp Madeira EV 141,  
Campus da Penteadá,  
9020 105 Funchal, Portugal  
info@complyexpress.com