

UC128-OBF Front mount cylinder



- UC128-OBF – Balanced: the number of wheel turns lock-to-lock is equal port to starboard or vice-versa
- Adjustable boss style fittings for easy installation
- High resistance stainless steel connection bolt (ULTRABOLT)
- Replaceable cylinder end caps

- UC128-OBF cylinder is built with heavy duty stainless steel cylinder rod, seals and link assemblies, is simple to install and fits almost every 2 and 4 stroke outboard engine on the market.
- UC128-OBF cylinders are recommended for use with UP25, UP28, UP33 and UP39 series helms and preassembled hoses (Kit OB and Kit OB/R5).
- In the applications with dual UC128-OBF cylinder it is necessary to order a standard UC128-OBF cylinder (link arm attached to the starboard side of the cylinder) and a port UC128P-OBF cylinder (link arm attached to the port side of the cylinder). See tie bars section to select the required model for dual engine/dual cylinder applications.

Applications: UC128-OBF front mount cylinder is not recommended for use in installations where the boat speed exceeds 55 mph (48 knots) / (65 mph (56 knots) in dual engine, dual cylinder and counter rotating engines application). Not intended for use in racing applications.

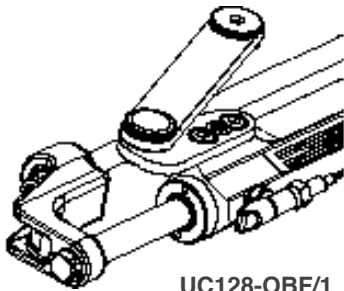
Model	Part No.	Description
UC128-OBF/1	43231N	Front mount cylinder, starboard version
UC128-OBF/2	43232R	Front mount cylinder, starboard version
UC128-OBF/3	43233T	Front mount cylinder, starboard version
UC128P-OBF/1	43234V	Front mount cylinder, port version
UC128P-OBF/2	43235X	Front mount cylinder, port version

Volume	120 cc - 7.3 cu.in.
Output force	450 kg (992 lbs)
Internal diameter	35 mm (1.37")
Stroke	185 mm (7.28")
Fittings for high pressure flex hose	3/8"
Bleed fittings	DN5 quick connect

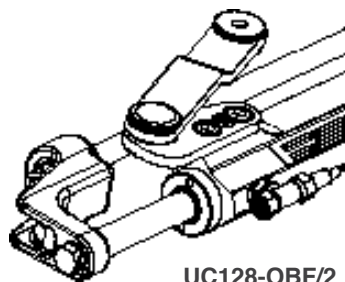
UC128-OBF Front mount cylinder



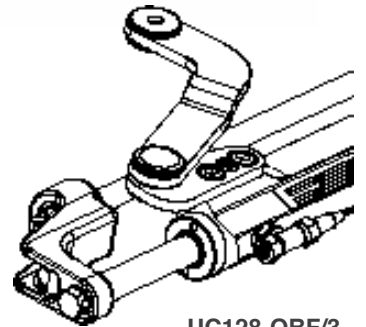
UC128P-OBF



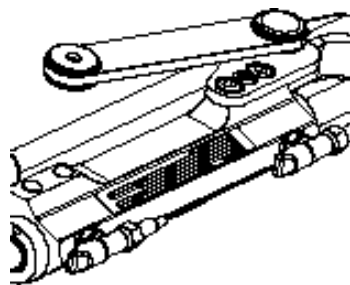
UC128-OBF/1



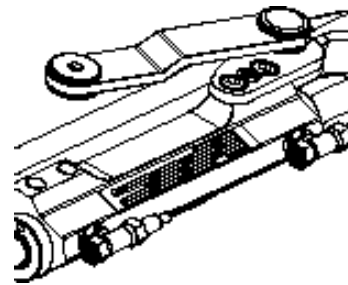
UC128-OBF/2



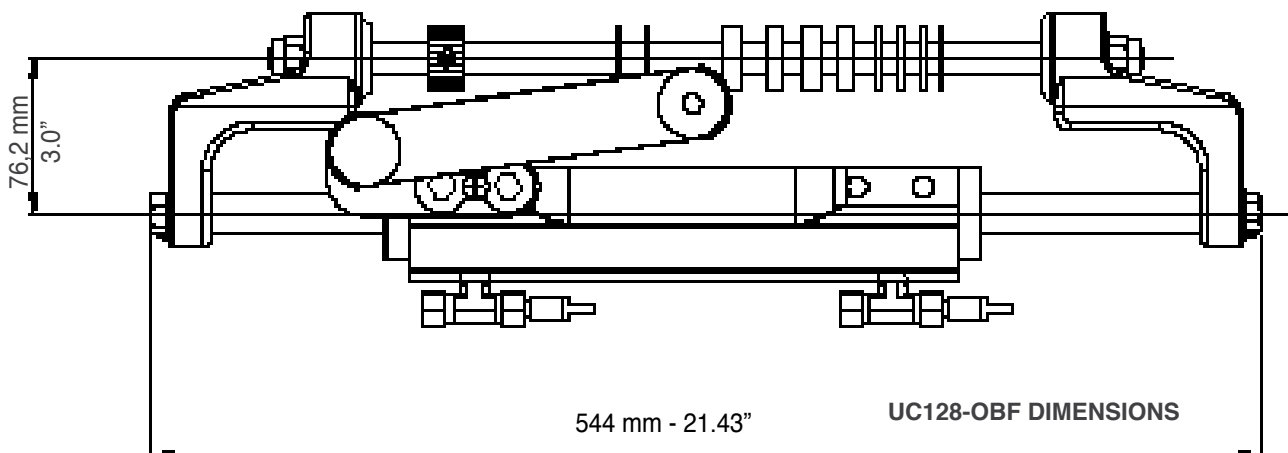
UC128-OBF/3



UC128P-OBF/1

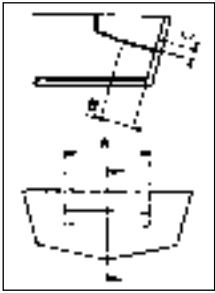


UC128P-OBF/2



UC128-OBF

Front mount cylinder



Splashwell dimension requirements		
Engine No.	1	2
A	540 mm (21.25")	1110 mm (43.70")
B	152 mm (5.98")	152 mm (5.98")
C	152 mm (5.98")	152 mm (5.98")

For twin engine applications minimum engine center distance is 650 mm (26")

UC128-OBF link arms

LA1, LA2, LA3 link arm kits for UC128-OBF standard cylinder and LA1P, LA2P link arm kits for UC128P-OBF port cylinder can also be supplied separately for the first application only, in case the UC128-OBF cylinder needs to be adapted to the already installed outboard engine (see application guide).

WARNING: LA1, LA2, LA3 and LA1P, LA2P link arm kits are recommended for use on the first installation **only** and **not** as a retrofit. Installation has to be made by qualified technicians only.

The tightening load to be applied to the screws (**included**) of the link arm kit is recommended on the Installation Manual and the mounting instructions supplied with the products.

"STARBOARD" link arms



LA1 40045A
for UC128-OBF/1



LA2 40046C
for UC128-OBF/2



LA3 40073F
for UC128-OBF/3

"PORT" link arms



LA1P 40104P
for UC128P-OBF/1



LA2P 40105S
for UC128P-OBF/2

UC128-OBF Cylinder applications


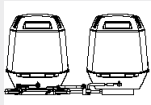
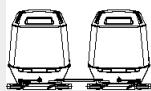
ENGINE	MODEL	YEAR	CYLINDER	P. NO.
Mercury® Mariner®	115-125-150 EFI 2S	1990-2007	UC128-OBF/1	43231N
	225-250 EFI 2S	2000-2007	UC128-OBF/1	43231N
	75-90-115 OPTIMAX	2004-2018	UC128-OBF/3	43233T
	135-150-175 OPTIMAX	1999-2018	UC128-OBF/1	43231N
	200-225-250 OPTIMAX	1999-2018	UC128-OBF/1	43231N
	RACING 300 OPTIMAX	1999-2011	UC128-OBF/1	43231N
	100-115 EFI 4S	2007-to date	UC128-OBF/1	43231N
	250 SALTWATER EFI 4S	2007-2011	UC128-OBF/1	43231N
	135-150-175-200 VERADO L4	2004-2012	UC128-OBF/1	43231N
	FOURSTROKE / PRO XS 175-200 V6	2018-to date	UC128-OBF/1	43231N
	FOURSTROKE / PRO XS 225-300 V8	2018-to date	UC128-OBF/1	43231N
Evinrude®	E75-E90 2S	2004-to date	UC128-OBF/2	43232R
	E115-E130-E135 2S V4	1995-2020	UC128-OBF/2	43232R
	E150-E175-E200-E225-E250-E300 2S V6	1995-2020	UC128-OBF/2	43232R
Yamaha®	115C-130B 2S	1990-2008	UC128-OBF/2	43232R
	75C-90 2S	1998-2008	UC128-OBF/2	43232R
	F70 4S	2010-to date	UC128P-OBF/1	43234V
	150F-200F-250G 2S	1990-2008	UC128-OBF/2	43232R
	150 HPDI VMAX 2S	1996-2007	UC128-OBF/2	43232R
	175-200-225-250-300 HPDI VMAX 2S	2000-2008	UC128-OBF/2	43232R
	F115-F150 EFI 4S	2000-2008	UC128-OBF/2	43232R
	F200-F225-F250 4S	1999-2007	UC128-OBF/1	43231N
	F115-F130-F150D- F150F-F175A-F200F-F200G L4	2002-to date	UC128-OBF/1	43231N
	F200-F225-F250-F300 V6 4S	2004-to date	UC128-OBF/2	43232R
Honda®	BF75-BF90 4S	1995-to date	UC128-OBF/1	43231N
	BF115-BF130 4S	1998-to date	UC128-OBF/3	43233T
	BF135-BF150 4S	2005-to date	UC128-OBF/1	43231N
	BF150 V-TEC 4S	2008-to date	UC128-OBF/1	43231N
	BF175-BF200-BF225-BF250 4S	2001-to date	UC128-OBF/1	43231N
Suzuki®	DF70-80-90 4S	1998-to date	UC128-OBF/2	43232R
	DF100-115-140 4S	2008-to date	UC128-OBF/1	43231N
	DF150-175-DF200 L4 4S	2006-to date	UC128-OBF/1	43231N
	DF200-DF225-DF250-DF300-V6 4S	2004-to date	UC128-OBF/2	43232R
Tohatsu®	115-120-140 2S	2004-to date	UC128-OBF/2	43232R
	70-90-115 TLDI 4S	2004-to date	UC128-OBF/1	43231N
	MFS 50-60-75-90-100-115 4S	2018-to date	UC128-OBF/1	43231N
	BFT 115-150-200-225-250 4S	2014-to date	UC128-OBF/1	43231N
	BFT60-75-80-90-100 4S	2015-to date	UC128-OBF/1	43231N
Selva®	80 PORTOFINO/TIGERSHARK 2S	1995-2008	UC128-OBF/1	43231N
	150 WHITE SHARK 2S	2001-2007	UC128-OBF/2	43232R
	100EFI MARLIN-115 EFI NARWHAL	2000-to date	UC128-OBF/2	43232R
	225 BEAKED WHALE 4S	2019-to date	UC128-OBF/2	43232R
	100-150EFI KILLER WHALE 4S- 200 SEI WHALE 4S	2000-to date	UC128-OBF/1	43231N
Johnson®	BJ90-115-140 4S	2001-2007	UC128-OBF/1	43231N
	J90-115 V4 2S	1995-2007	UC128-OBF/2	43232R
	J150-175 V6 2S	1995-2007	UC128-OBF/2	43232R
	J200-225 V6 4S	2004-2007	UC128-OBF/2	43232R
OXE®	125-150-175-200HP DIESEL	2018-to date	UC128-OBF/1	43231N
	300HP DIESEL	2020-to date	UC128-OBF/1	43231N
COX®	300HP	2020-to date	UC128-OBF/2	43232R
Neander Shark®	DTORQUE 111	2018-to date	UC128-OBF/1	43231N
Parsun®	F300	2023-to date	UC128-OBF/2	43232R

NOTE:
Suzuki® engines built from 1998 to 2008 installing UC128-OBF/1 cylinder require optional **KIT SU - 41954W**.
For higher horsepower applications, high performance SilverSteer™ cylinder is recommended.

WARNING
These recommendations should be used as a general reference only. Final selection should be made with the assistance of a qualified installation technician.
For any further information please contact our Technical Service.

UC128-OBF

Order guide

SYSTEM	APPLICATION	WHEEL TURNS	COMPONENTS	MODEL	Q.TY	
Single engine Single cylinder 	Up to 300 hp max	4,8 (UP25)	Cylinder	UC128-OBF	1	
			Helm pump	UP25 or UP28	1	
			Hose Kit	KIT OB	1	
			Oil	OL 150	2	
			Steering wheel	(Wheel selection)	1	
For a second station add: 1 UP25 or UP28 helm pump, 1 KIT OB-2S fitting kit, 1 KIT OB, 1 OL 150, 1 steering wheel						
Dual engine Single cylinder 	Up to 300 hp max (non-counter rotating engine)	4,8 (UP25)	Cylinder	UC128-OBF	1	
			Helm pump	UP25 or UP28	1	
	Up to 500 hp max (counter rotating engine)		4,3 (UP28)	Hose Kit	KIT OB	1
				Oil	OL 150	2
				Tie bar	A96	1
			Steering wheel	(Wheel selection)	1	
For a second station add: 1 UP25 or UP28 helm pump, 1 KIT OB-2S fitting kit, 1 KIT OB, 1 OL 150, 1 steering wheel						
Dual engine Dual cylinder 	Up to 500 hp max (non-counter rotating engines)	6,1 (UP39)	Cylinder	UC128-OBF	1	
			Cylinder Port	UC128P-OBF	1	
	Up to 600 hp max (counter rotating engines)			Helm pump	UP39 or UP45	1
				Hose Kit	KIT OB	1
				Oil	OL 150	3
		5,3 (UP45)	Tie bar	A95	1	
			Steering wheel	(Wheel selection)	1	
			Connection Kit	KIT OB-2C	1	
For a second station add: 1 UP39 or UP45 helm pump, 1 KIT OB-2S fitting kit, 1 KIT OB, 2 T fittings 39502 V, 1 OL 150, 1 steering wheel						

WARNING

The UC128-OBF front mount cylinder is not recommended for use in installations where the boat speed exceeds **55 mph (48 knots)** 65 mph (56 knots) in dual engine, dual cylinder and counter rotating engines application. Not intended for use in racing applications.

Dual engine dual cylinder application diagram



NOTE:

Three outboard engine applications are available with UC130-SVS cylinder.

For triple outboard engine, dual cylinder applications, please refer to tie-bar section.

For any further and detailed information, please contact our Technical Service.

NOTE:

For high performance applications SilverSteer™ systems are recommended.