

HIBOY

S2 MAX

Electric Scooter
USER MANUAL



HIBOY

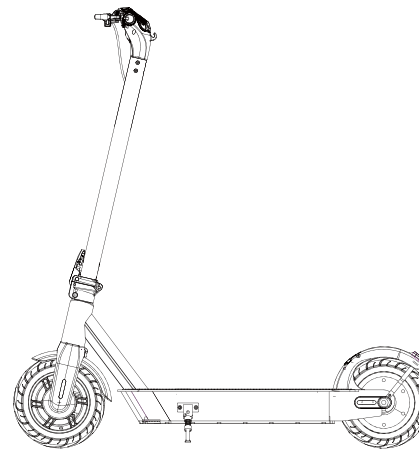
The manufacturer reserves the right to make changes to the product, and update this manual at any time.
Visit www.hiboy.com to download the latest user materials.

www.hiboy.com

Contents

1	Package Contents	01
2	Product Overview	02
3	Assembly	03
4	First Ride	04
5	Charging	05
6	Riding Basics	05
7	Riding Notice	07
8	Dangerous Actions (No Attempting!)	09
9	Safety Instructions	11
10	Folding and Carrying	12
11	Daily Care and Maintenance	13
12	Specifications	15
13	Limited Warranty Statement	16

1. Package Contents



3 x Allen Wrench



6 x Screws

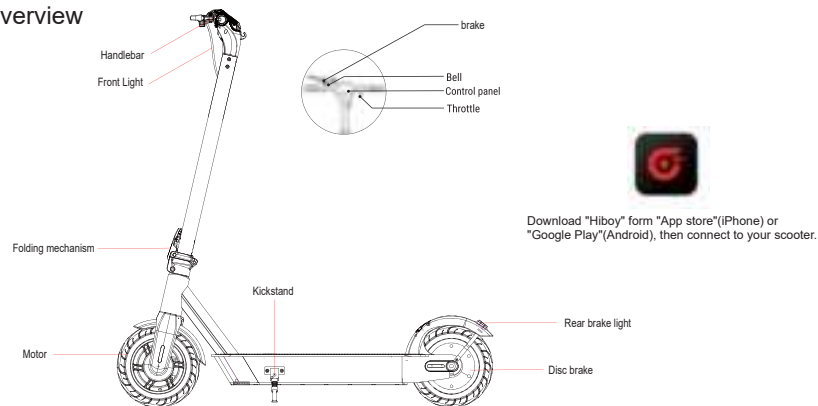


Valve Stem Extension



Battery Charger

2. Product Overview

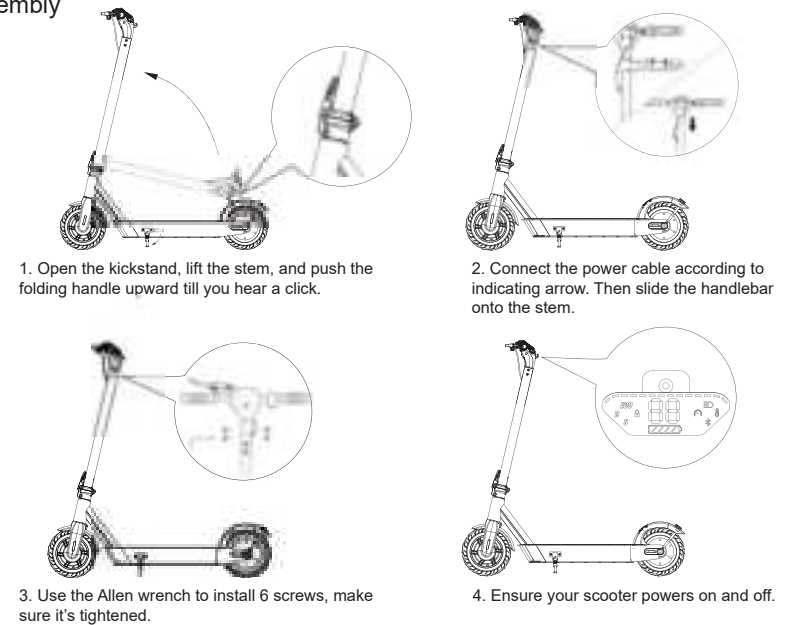


Control Panel

	Power Button	Short press to turn on, long press to turn off
	Battery Indicator	The power level is indicated by five power lights on the control panel.
	Light	Press one time to turn on the front light when the scooter is on. The tail light is always on and flashing when brake.
	Speed Mode	Quick click power button twice to switch the speed mode. "ECO" for Energy saving mode (smooth acceleration, suitable for beginners), "D" for Standard mode and "S" for Sport mode (powerful, only recommended for skilled riders).
	Temperature	When the icon lights up, please pull over to the side of the road to cool down the scooter.
	Cruise Control	Press three times to turn on/off the cruise control.

2

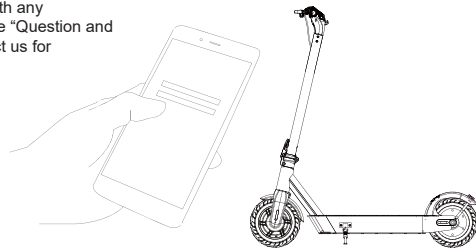
3. Assembly



3

4. First Ride

1. Scan the QR code to download Hiboy App.
Before using the App, you need to click on register to follow registration process on the App, if you meet with any problems during registration, please refers to the "Question and Answer" to find the answer, you can also contact us for support.



2. Turn on the Scooter.

3. Select the device to connect.

4. After connecting with the scooter, you can use the App to control the scooter, such as change the Speed mode, Speed unit, lock / unlock the scooter, turn on / off the lights...etc.

Have fun with Hiboy electric scooter.

5. Charging



Open the rubber plug

Insert the charging plug in

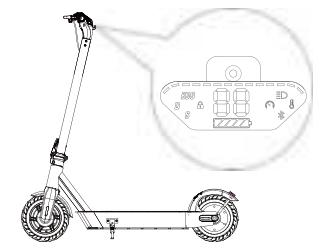
Fill and fix the rubber plug after the charging

Your scooter will be fully charged when the LED light on the charger changes from red (charging) to green.
After a period of full charge, the charging will automatically cut off.
Even so, we still don't recommend charging your scooter for a long time.
Do not connect the charger if the charging port is wet. Cover the charging port when not use.

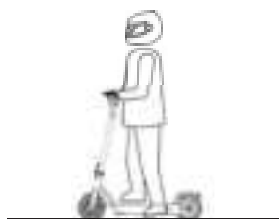
6. Riding Basics



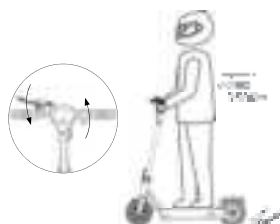
Always wear a helmet and safety gear so to avoid falling and injury during the driving learning, as shown in the figure.



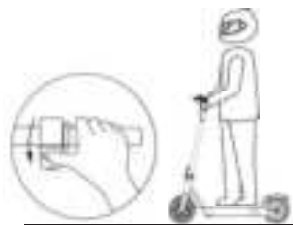
1. Turn the power on, and check the electricity indicator.



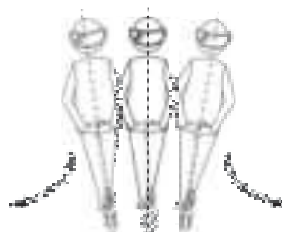
2. Stand on the base with one foot and propel yourself with the other foot.



4. Release the throttle and to reduce the speed slowly. Squeeze the brake lever for a sudden brake.



3. When the electric scooter begins to glide, put both feet on the deck and press the accelerator. The speed shall be kept above 3.1mph (5km/h) for starting the throttle.

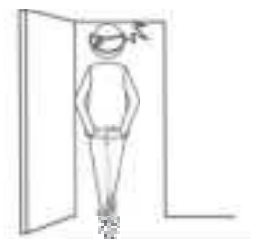


5. Tilt your body to the steering direction as you turn, and turn the handlebar slowly.

7. Riding Notice



Do not ride in the rain.



Look out for doors, elevators and other overhead obstacles.



Please keep a medium or low speed (5mph) when you ride through speed bumps, elevator door sills, bumpy roads or other uneven surfaces. Slightly bend your knee to better adjust mentioned surfaces.



Do not accelerate when you go downhill.