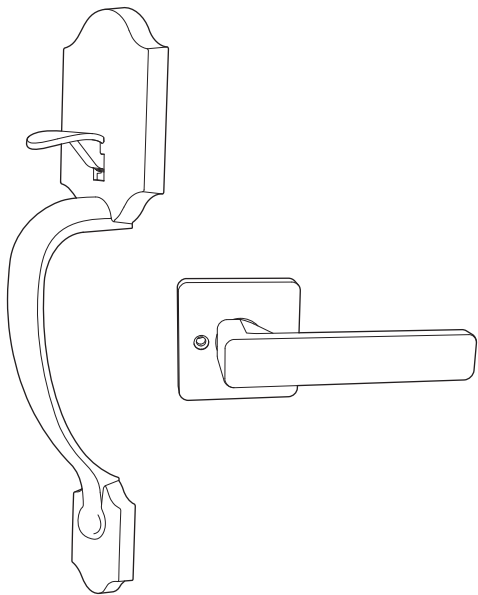
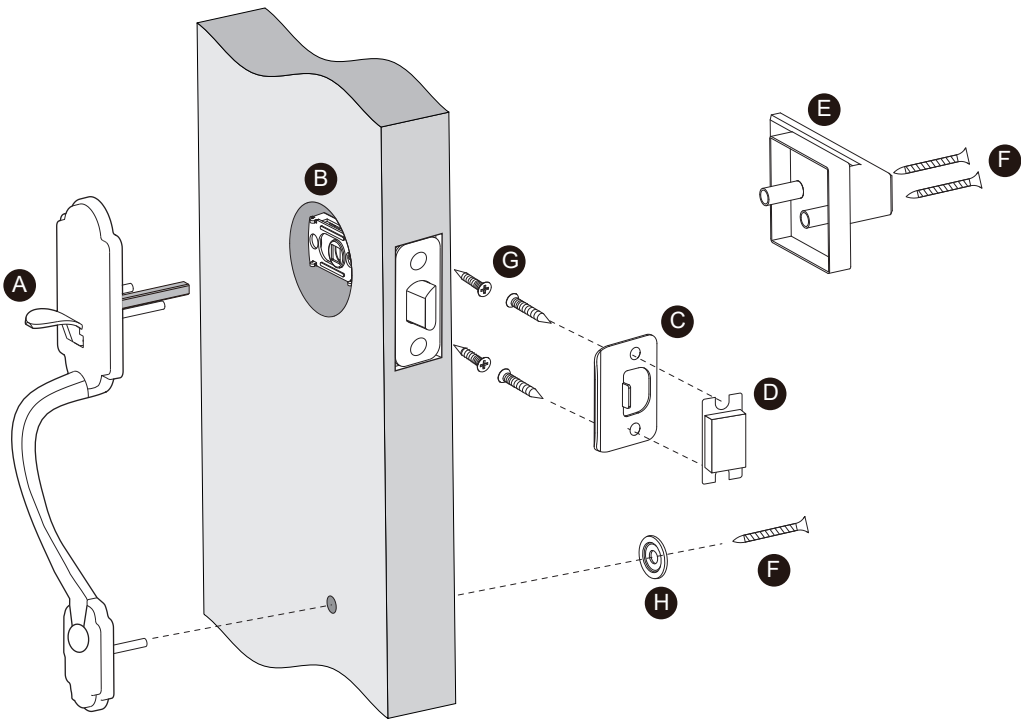


# Handleset


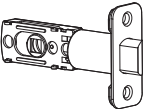

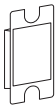
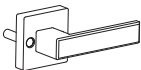
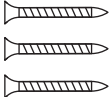


## Installation Instructions of Handleset



Thank you for purchasing our products. Please review this manual thoroughly before operating your device.  
All pictures in this manual are for illustration purpose only. Actual product may vary due to product upgrade.



### Parts list

<b>A</b> Handleset x1 	<b>B</b> Latch x1 	<b>C</b> Strike x1 
<b>D</b> Dust Cover x1 (optional) 	<b>E</b> Handle Lever x1 	<b>F</b> Handle Lever & Handleset screws x3 
<b>G</b> Latch&Strike screws x4 	<b>H</b> Spacer x1 	

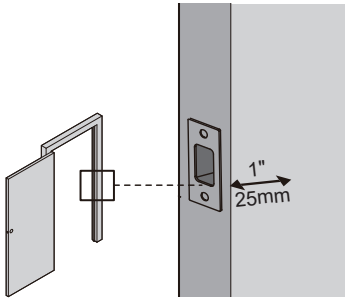
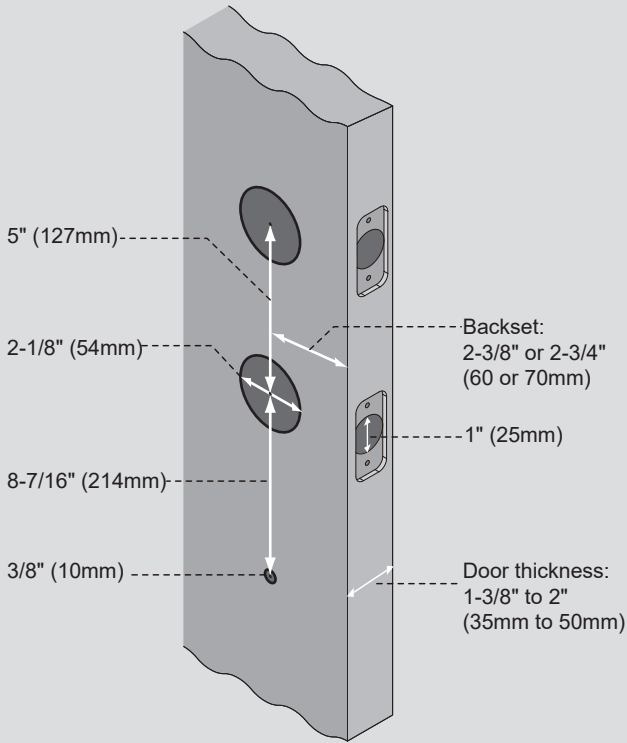
#### TOOL REQUIRED:



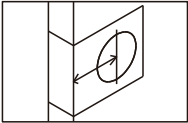
Do not use an electric screwdriver during installation.

### 1. Prepare the door and check dimensions

If your door already has the holes shown in the picture below, proceed to the next step, if your door does not have holes, use the mounting template to drill a new hole.

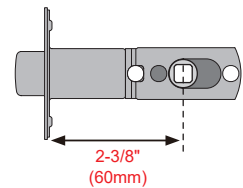


## 2. Latch backset adjustment

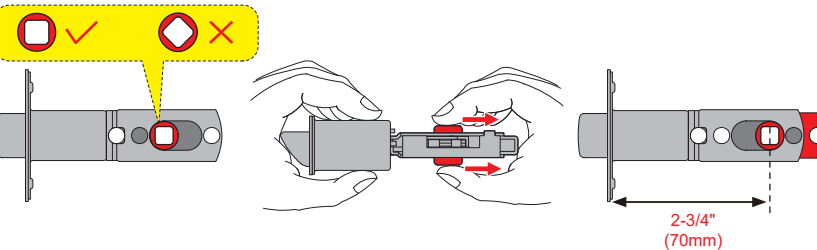


Backset is the distance from the door edge to the center of the hole in the door.  
The latch is provided with adjustable design which can fit either 2-3/8" (60mm) or 2-3/4" (70mm) backset.

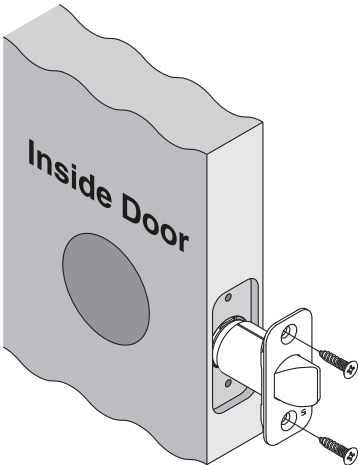
**A.** If the backset of your door is 2-3/8" (60mm), no need to adjust the latch.



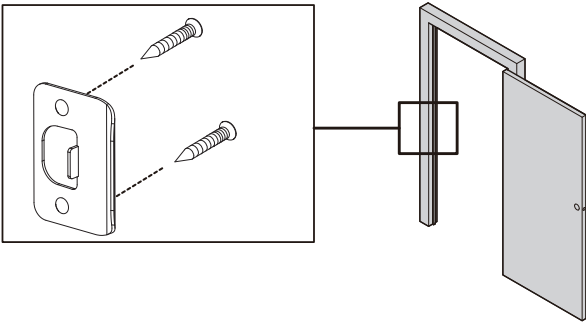
**B.** If the backset of your door is 2-3/4" (70mm), please adjust the latch.



## 3. Install latch and strike

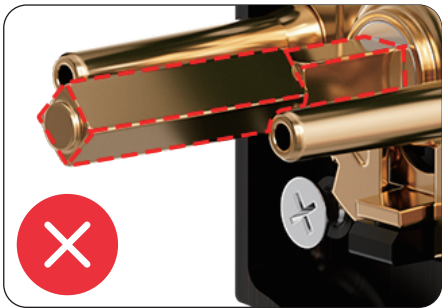
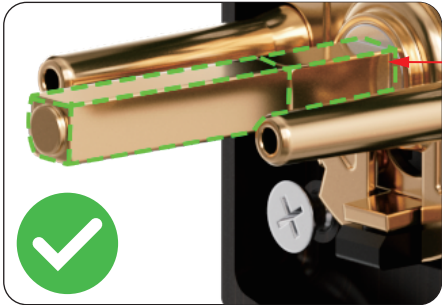


**! IMPORTANT:**  
The latch should be aligned with the chiseled properly.

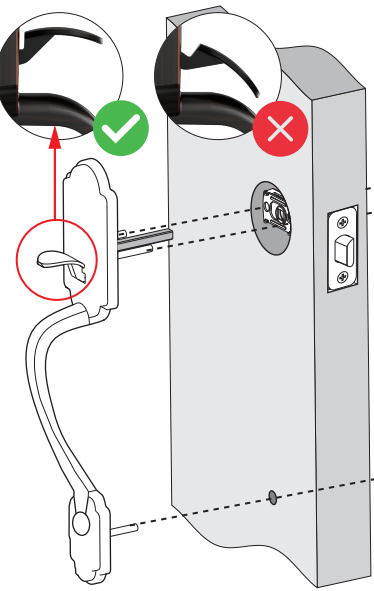
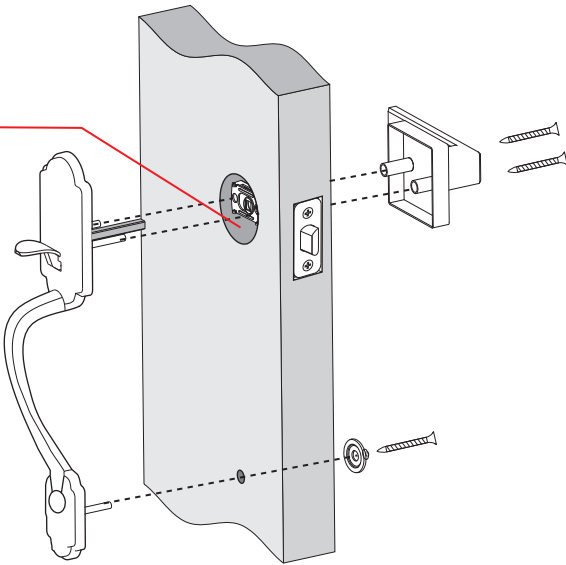


**! IMPORTANT:**  
Make sure the hole in door frame is drilled a minimum of 1" (25mm) deep.

## 4. Install Handleset

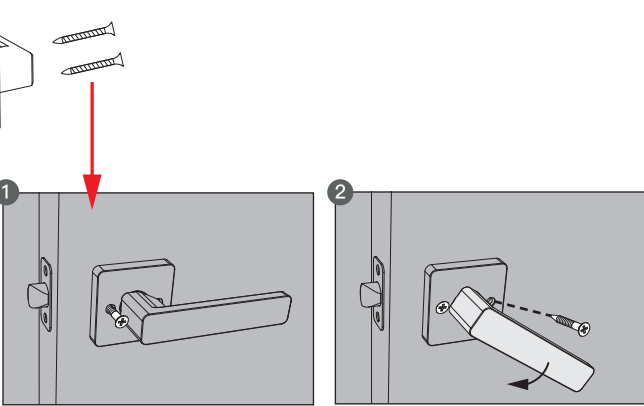


**! IMPORTANT:**  
The base of spindle must be rotated aligning to the hole.



**! IMPORTANT:**  
Don't press the knob during the installation of the handle.

## 5. Install Handle Lever



**Test the Handleset after installation.**  
Keep the door open, retract the latch by pressing knob from outside and pushing the lever from inside of the door to test if the Handleset works smoothly.