



# MAKE A DIFFERENCE

## Front Bumper

**BXG.5302**

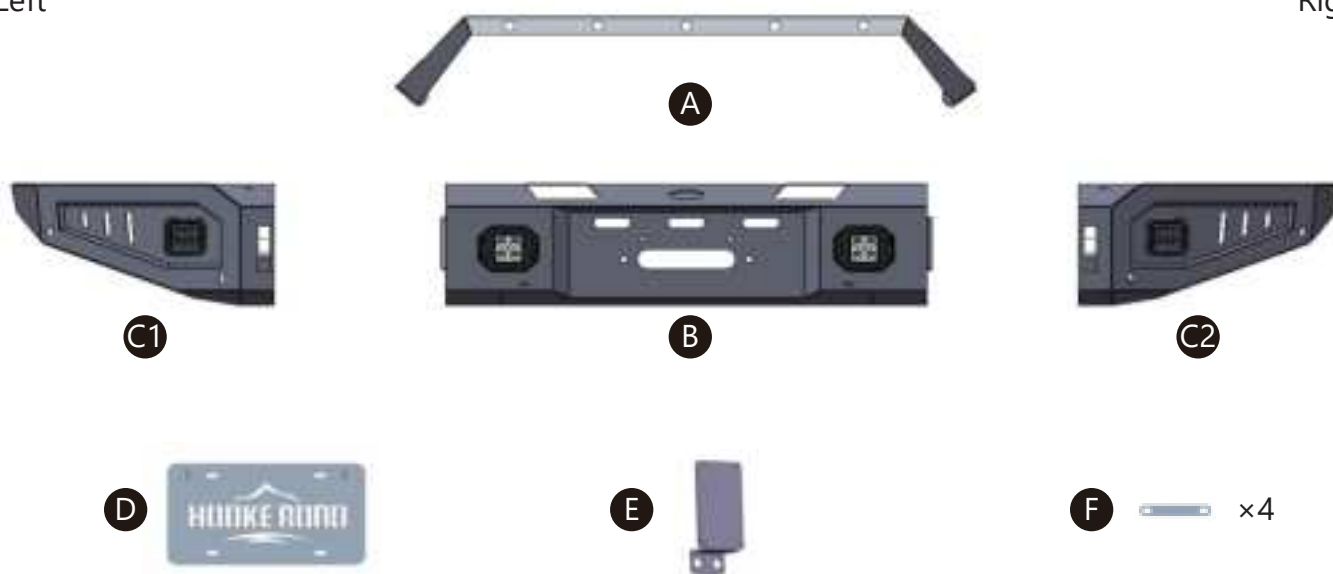
(INSTALLATION INSTRUCTION)

**ATTENTION** • Please verify all parts are present and read instructions carefully before starting installation.  
Please feel free to contact your distributor if you have any kind of question about your purchase.

### CONTENTS

Left

Right



A: Bull Bar

B: Main Body

C1&amp;C2: Wings

D: License Plate Bracket

E: Winch Power Control Box Bracket

F: Sensor Brackets

Qty	Part Name	Size(mm)	Picture	Qty	Part Name	Size(mm)	Picture
6	Hex Bolt	M12×30		6	Flat Washer	M8	
6	Hex Bolt	M8×20		2	Flat Washer	M6×12×1	
2	Button Bolt	M6×16		6	Hex Nut	M12	
8	Button Bolt	M4×20		6	Flange Hex Lock Nut	M8	
6	Split Lock Washer	D12		2	Nylon Lock Nut	M6	
6	Split Lock Washer	D8		1	L-Wrench	M4	
6	Flat Washer	M12×30×2		2	EVA		

## 2 TOOLS REQUIRED

◆ Drive Ratchet Handle

◆ 10mm, 14mm Wrench

◆ 4mm Hex Bit Socket

◆ 19mm Wrench

To view online instruction, please scan the QR code.



## 3 INSTALLATION INSTRUCTION

### Step 1

Place the vehicle in park, remove the factory bumper from the frame.



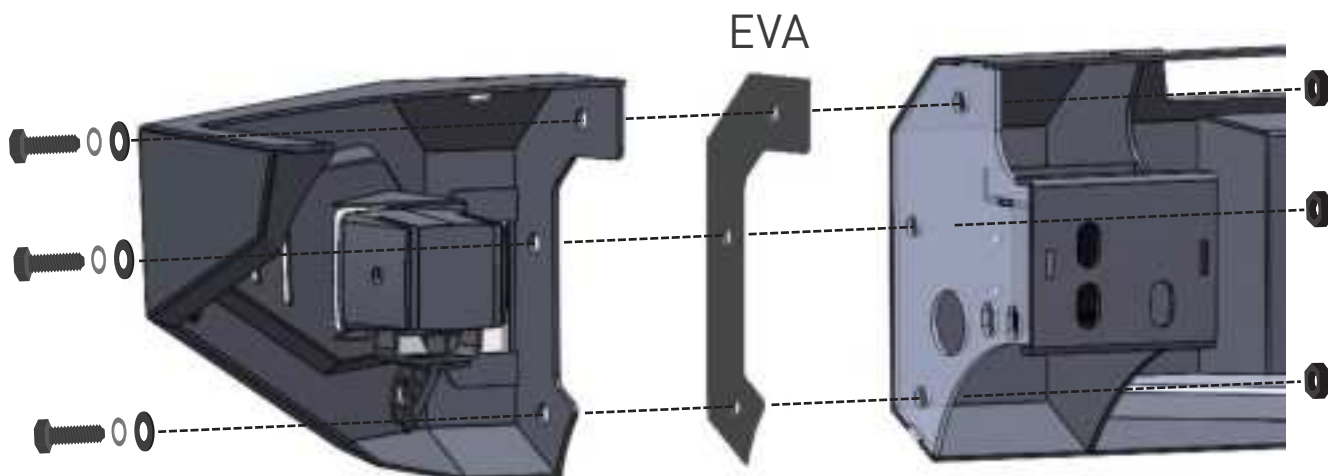
### Step 2

First, stick the EVA to the main body. Assemble your Hooke Road bumper. Tighten the hardware. Repeat this step on the other side of the bumper.

- (6) M12×30 Hex Bolts
- (6) M12 Hex Nuts

- (6) D12 Split Lock Washers
- (2) EVA

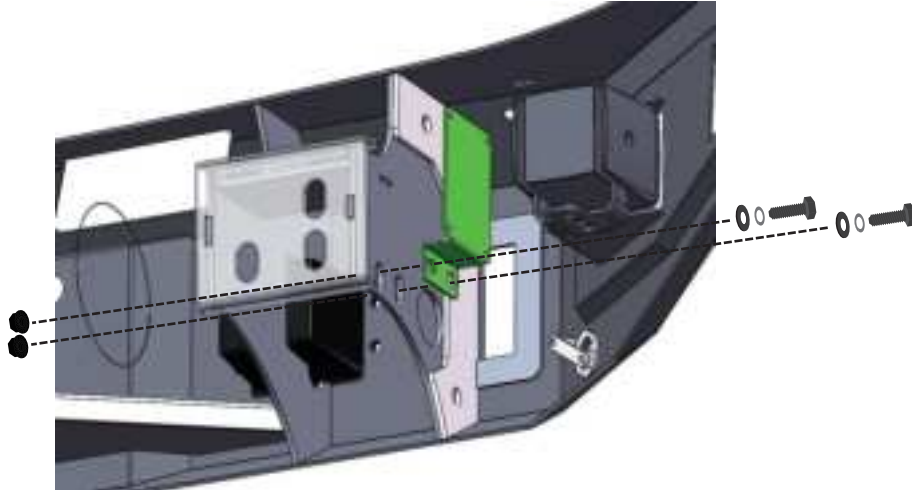
- (6) M12×30×2 Flat Washers



**Step 3**

Secure the winch power control box bracket to the bumper, and tighten the hardware.

- (2) M8×20 Hex Bolts
- (2) D8 Split Lock Washers
- (2) M8×16×1 Flat Washers
- (2) M8 Flange Hex Lock Nuts

**Step 4**

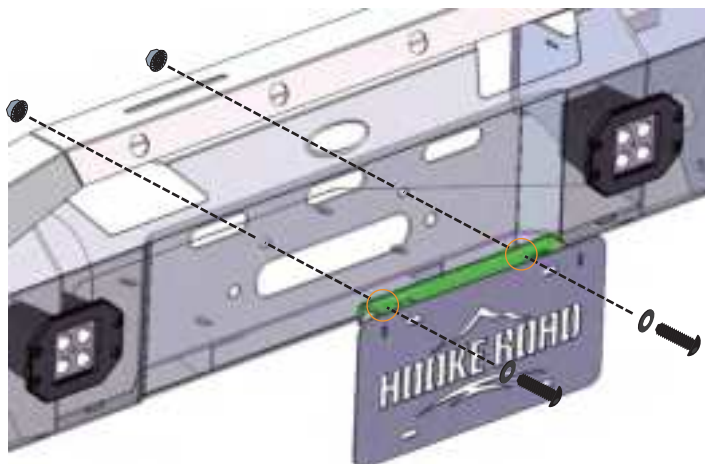
Secure the bull bar to the bumper, and tighten the hardware.

- (4) M8×20 Hex Bolts
- (4) D8 Split Lock Washers
- (4) M8×16×1 Flat Washers
- (4) M8 Flange Hex Lock Nuts

**Step 5**

Secure the license plate bracket to the bumper, and tighten the hardware.

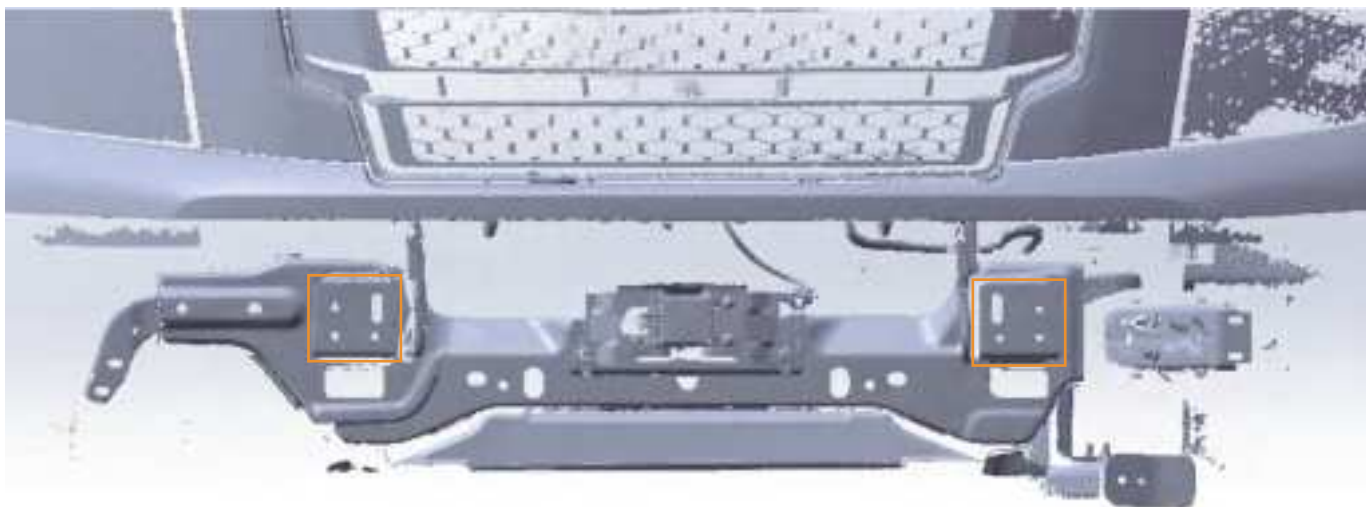
- (2) M6×16 Button Bolts
- (2) M6×12×1 Flat Washers
- (2) M6 Nylon Lock Nuts



Secure the bumper to the vehicle frame. Adjust the bumper to the desired position.  
Repeat this step on the other side of the vehicle.

**Finally, tighten all bolts.**

•(6) Factory Bolts



The installation is complete. We hope you enjoy a wonderful off-road life with this quality Hooke Road product!

