



# MAKE A DIFFERENCE

## Front Bumper

**BXG.5302**

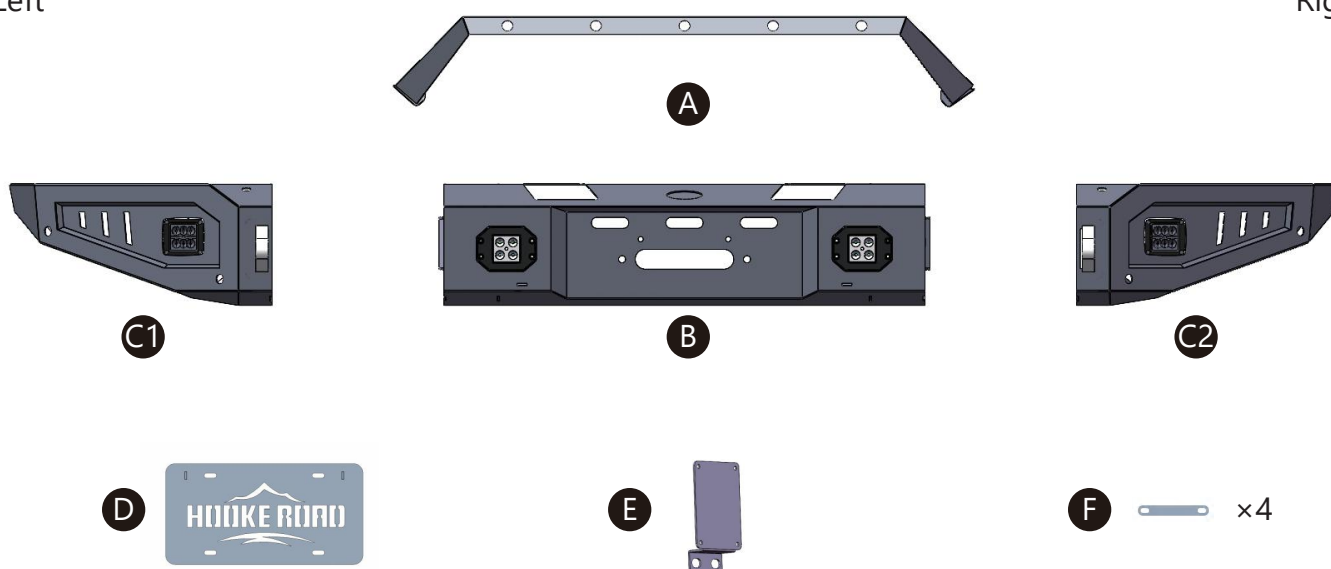
(INSTALLATION INSTRUCTION)

**ATTENTION** • Please verify all parts are present and read instructions carefully before starting installation.  
Please feel free to contact your distributor if you have any kind of question about your purchase.

### CONTENTS

Left

Right



A: Bull Bar

B: Main Body

C1&amp;C2: Wings

D: License Plate Bracket

E: Winch Power Control Box Bracket

F: Sensor Brackets

Qty	Part Name	Size(mm)	Picture	Qty	Part Name	Size(mm)	Picture
6	Hex Bolt	M12×30		6	Flat Washer	M8	
6	Hex Bolt	M8×20		2	Flat Washer	M6×12×1	
2	Button Bolt	M6×16		6	Hex Nut	M12	
8	Button Bolt	M4×20		6	Flange Hex Lock Nut	M8	
6	Split Lock Washer	D12		2	Nylon Lock Nut	M6	
6	Split Lock Washer	D8		1	L-Wrench	M4	
6	Flat Washer	M12×30×2		2	EVA		

## 2 TOOLS REQUIRED

◆ Drive Ratchet Handle

◆ 10mm, 14mm Wrench

◆ 4mm Hex Bit Socket

◆ 19mm Wrench

To view online instruction, please scan the QR code.



## 3 INSTALLATION INSTRUCTION

### Step 1

Place the vehicle in park, remove the factory bumper from the frame.



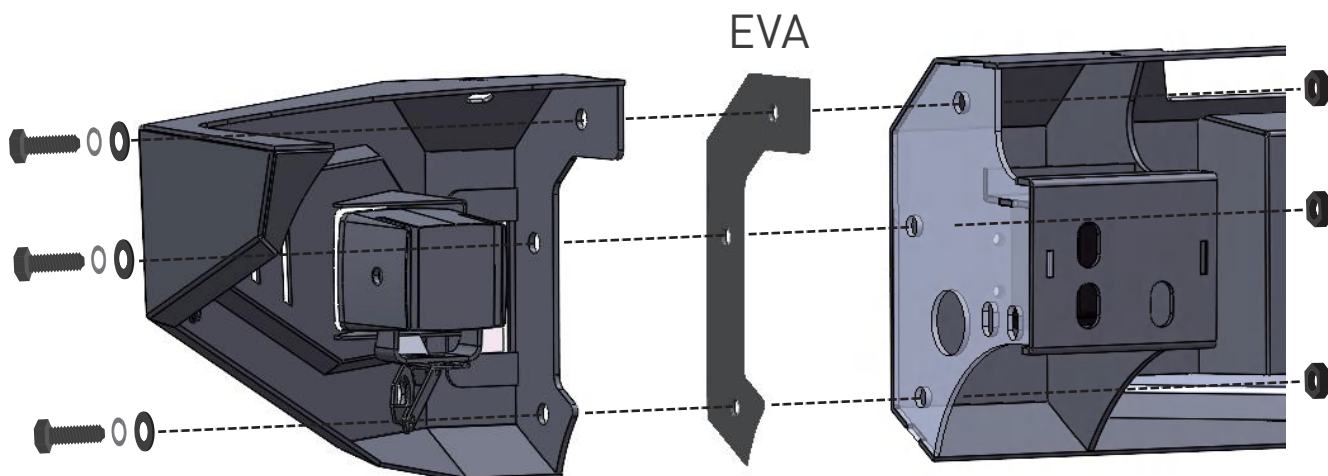
### Step 2

First, stick the EVA to the main body. Assemble your Hooke Road bumper. Tighten the hardware. Repeat this step on the other side of the bumper.

- (6) M12×30 Hex Bolts
- (6) M12 Hex Nuts

- (6) D12 Split Lock Washers
- (2) EVA

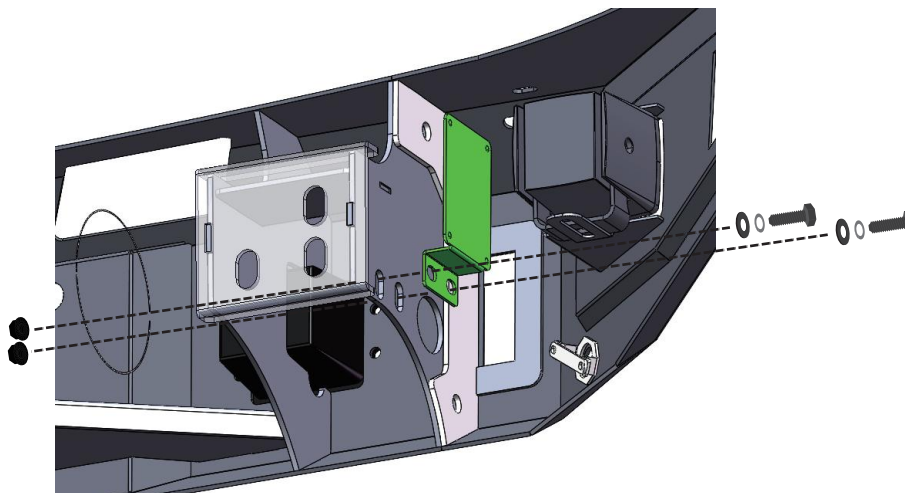
- (6) M12×30×2 Flat Washers



**Step 3**

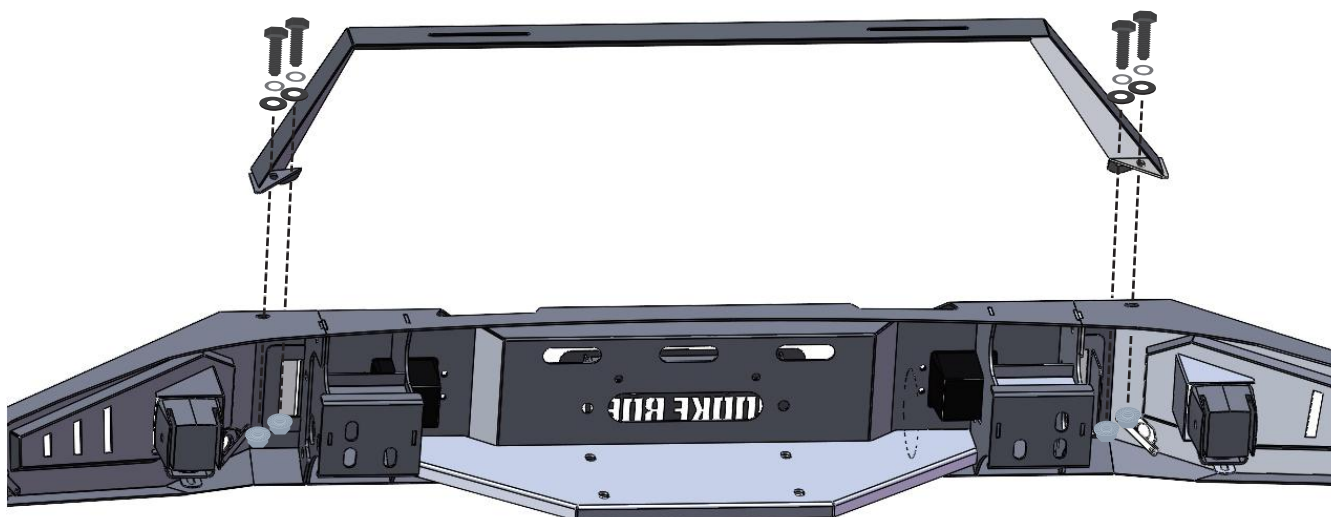
Secure the winch power control box bracket to the bumper, and tighten the hardware.

- (2) M8×20 Hex Bolts                      •(2) D8 Split Lock Washers                      •(2) M8×16×1 Flat Washers
- (2) M8 Flange Hex Lock Nuts

**Step 4**

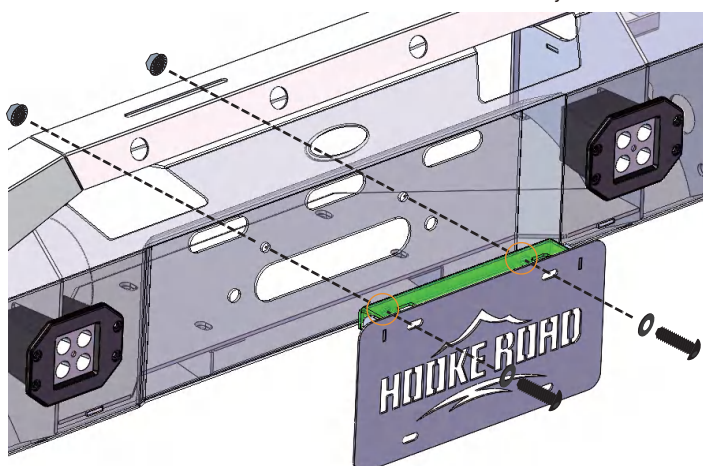
Secure the bull bar to the bumper, and tighten the hardware.

- (4) M8×20 Hex Bolts                      •(4) D8 Split Lock Washers                      •(4) M8×16×1 Flat Washers
- (4) M8 Flange Hex Lock Nuts

**Step 5**

Secure the license plate bracket to the bumper, and tighten the hardware.

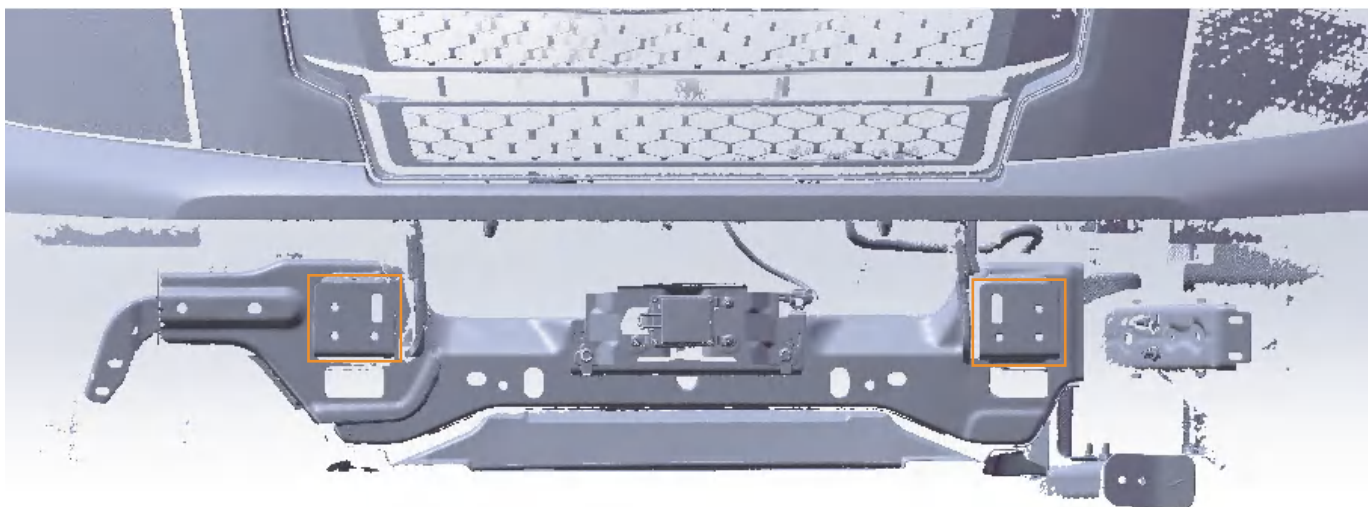
- (2) M6×16 Bottom Bolts                      •(2) M6×12×1 Flat Washers                      •(2) M6 Nylon Lock Nuts



Secure the bumper to the vehicle frame. Adjust the bumper to the desired position.  
Repeat this step on the other side of the vehicle.

**Finally, tighten all bolts.**

•(6) Factory Bolts



The installation is complete. We hope you enjoy a wonderful off-road life with this quality Hooke Road product!

