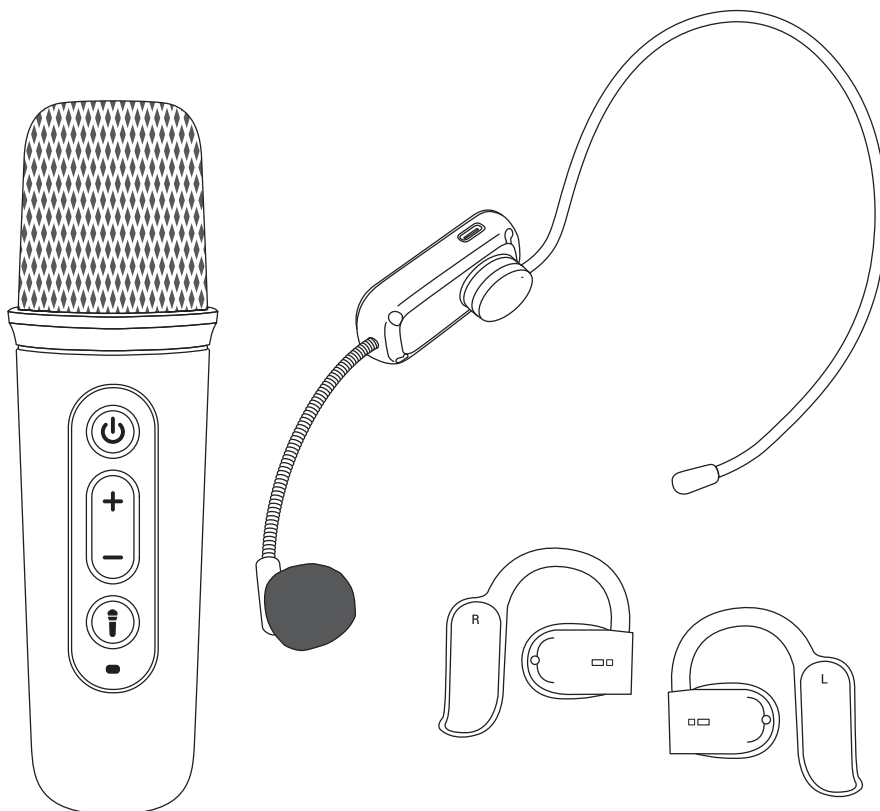


# LiberLink

## User Manual



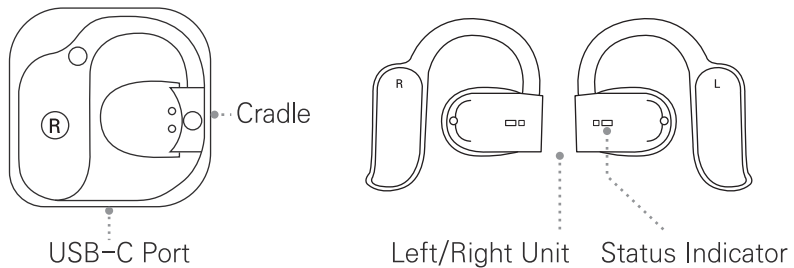
*earzone*

# 1. Product Features

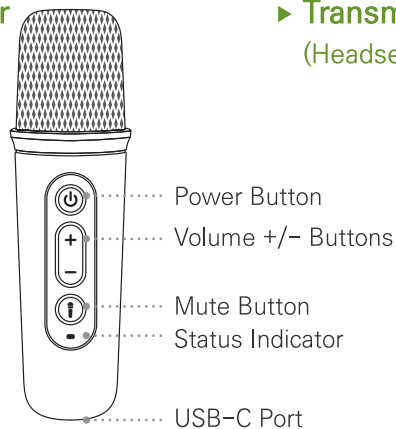
- Equipped with Bluetooth for stable, interference-free operation anywhere in the world
- A single transmitter can connect to multiple receivers simultaneously without restrictions
- Clear, uninterrupted sound quality even at distances up to 100 meters
- Auto-pairing for quick and easy connection
- Effortless connection with external devices (smartphones, tablets, etc.) via Bluetooth
- Operates without interference in the same space thanks to 65,536 unique IDs

## 2. Product Components

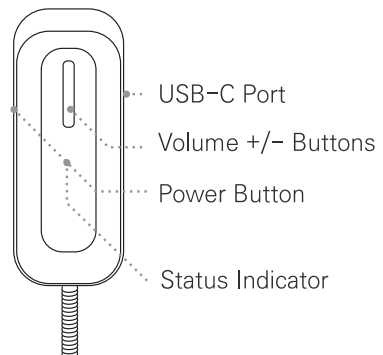
### ► Receiver



### ► Transmitter (Handheld)



### ► Transmitter (Headset)



### 3. Package Contents

#### Receiver Set



#### 20-User Full Package



#### Included Items

#### Handheld Microphone Set (Transmitter)



1 Handheld  
Microphone

1 Headset  
Microphone

Charging  
Storage Case

#### Headset Microphone Set (Transmitter)



1 Adapter

1 Neck Strap



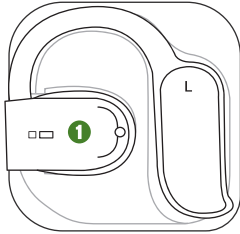
1 USB-C Cable

1 Lavalier Clip

20 Receivers  
(with cradles included)

## 4. Receiver (L-100RX)

### ► How to Use

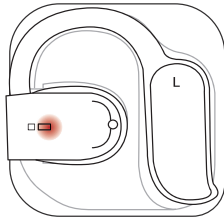


- Remove the receiver units from the charging cradle.
- Wear the unit in the correct ear according to the L (Left) / R (Right) marking on the device.
- To Increase Volume : Touch and hold the indicated area (1) for more than 1 second.  
To Decrease Volume : Quickly tap the indicated area (1) twice.

### ► How to Charge

Insert the receiver units into the cradle according to the L/R markings to begin charging.

#### Receiver Unit Charging

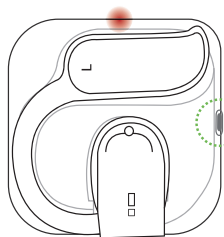


#### [Status Indicator]

Charging: Red light

Fully Charged: Indicator light turns off

#### Cradle Charging



#### [Status Indicator]

Charging: Red light

Fully Charged: Blue light

## 5. Transmitter (Handheld) (L-100TH)

### ► How to Use

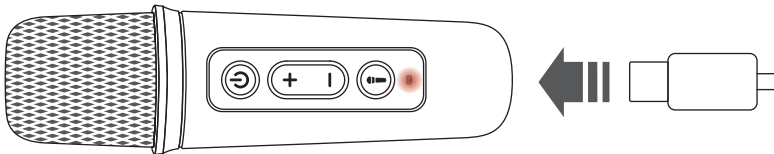


- **Power On:** Press and hold the power button (1) for about 3 seconds. (The status indicator will light up blue, and the device will automatically connect to the receiver.)
- **Power Off:** Press and hold the power button (1) for about 1.5 seconds. The status indicator will turn off.
- **Volume Up/Down:** Briefly press the volume up button (2) or volume down button (3) to adjust the volume.
- **Mute On/Off:** Press the mute button (4). (When muted, the status indicator will blink blue.)

Status Indicator

### ► How to Charge

Use a standard USB-C charger to charge the device.  
(Charging time with USB-C: Approximately 2 hours)



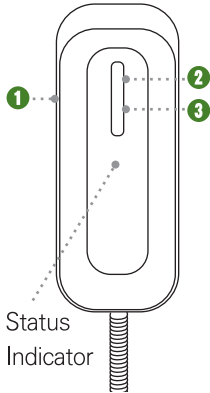
#### [Charging Status Indicator]

Charging: Red light

Fully Charged: Green light

## 6. Transmitter (Headset) (L-100TN)

### ► How to Use

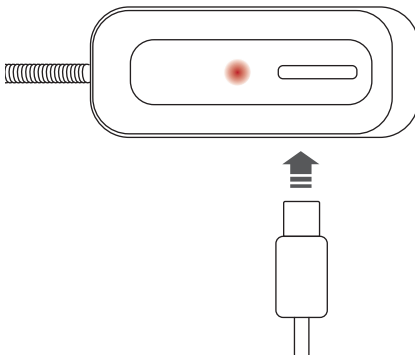


- **Power On:** Press and hold the power button (❶) for about 3 seconds.  
(The status indicator will light up blue, and the device will automatically connect to the receiver.)
- **Power Off:** Press and hold the power button (❶) for about 1.5 seconds. The status indicator will turn off.
- **Volume Up/Down:** Briefly press the volume up button (❷) or volume down button (❸) to adjust the volume.
- **Mute On/Off:** Quickly press the power button (❶) twice.  
(When muted, the status indicator will blink blue.)

### ► How to Charge

Use a standard USB-C charger for charging.

(Charging time with a USB-C charger: approx. 2 hours)



#### [Charging Status Indicator]

Charging: Red light

Fully Charged: Green light

## 7. Charging Storage Case – Charging and Bluetooth Connection

### ► How to Charge the Storage Case



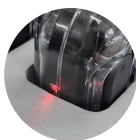
Charging storage case can be powered either by the included DC adapter or a standard USB-C charger.

#### \* Using DC Adapter:

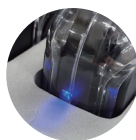
Full set charging time approx. 4.5 to 5 hours

#### \* Using USB-C Charger:

Full set charging time approx. 9 hours



During Charging



When Fully Charged

This storage case can charge up to 20 units simultaneously.

### ► Bluetooth Connection

On an external device with Bluetooth (smartphone, tablet, etc.), search for and connect to 'LiberLink'.

## 8. Product Specifications

### Transmitter Specifications

Model Name (Handheld)	L-100TH
Model Name (Headset)	L-100TN
Condenser Microphone	9750 Condenser
Directionality	Omnidirectional
Sensitivity / S.P.L	-38dB : 0dB=1V/Pa,1KHz)
Operating Voltage	3.7V/1000mAh(Handheld Type), 560mAh(Headset Type)
Operating Time	Handheld: Approx. 9 hours/Headset: Approx. 4.5 hours
Max.Input Sound Pressure Level	110dB
Current Consumption	<0.5mA
S/N Ratio	More than 68dB
Bluetooth Range	20 meters
Bluetooth Device Name	LiberLink
Transmission Frequency	2.4GHz
Frequency Range	20Hz~20000Hz
Dimensions (Handheld)	40(W) x 137(H) x 40(D) mm
Dimensions (Headset)	30(W) x 68(H) x 20(D) mm *Including flexible boom arm 30(W) x 210(H) x 20(D) mm
Weight (Handheld)	83g
Weight (Headset)	32g

### Receiver Specifications

Model Name	L-100RX
Speaker diameter	16±0.3mm
Speaker Impedance	32Ω±15% At 1 V, 1200Hz
Frequency Response	50Hz~20KHz Ref. level :At output of S.P.L.:85dB
Operating Voltage	Unit : 3.7V/90mAh, Cradle : 3.7V/600mAh
Operating Time	Approx. 5 hours on a single charge, up to 13 hours using cradle
Reception Frequency	2.4GHz
Dimensions (Cradle)	58(W) x 57(H) x 33(D) mm
Dimensions (Unit)	51(W) x 51(H) x 12(D) mm
Weight (Cradle)	45g
Weight (Unit)	11g

### Bluetooth Spec


Bluetooth Ver.	BT8952U2 5.0 +RFX2401C
Transmission /Reception Range	Effective Range: 50 meters Maximum Range: 200 meters




Conformity Assessment for Broadcasting and Communication Equipment

R-R-EAR-L-100TH Handheld Type / R-R-EAR-L-100TN Headset Type  
R-R-EAR-L-100RX Receiver

## 9. Product Precautions

 Caution: Please read the user guide carefully and follow the instructions to ensure safe use.

- This product may produce noise in environments with radio interference.
- The effective transmission distance may vary depending on surrounding conditions.
- Dropping the product or subjecting it to impact may cause damage.
- Clean the product with a soft, dry cloth only.
- Do not use gasoline or other chemical solvents, as they may cause deformation or malfunction.
- In areas where wireless device use is prohibited (e.g., hospitals, airplanes), this product may interfere with nearby electronic devices.
- Exposure to water may cause malfunction.

 Caution: If the device does not function properly, please check the following.

### When the transmitter or receiver does not power on:

- Ensure that both transmitter and receiver are turned ON.
- If the battery is depleted, charge the device and turn it ON again.

### When there is no sound output:

- Check the volume levels on both transmitter and receiver.
- Make sure the transmitter is not muted (a blinking blue status light indicates mute is ON)

### When there is excessive noise :

- Check whether nearby devices are using similar frequency bands.
- If you hear a beeping sound from the receiver, the battery is low—please recharge before use.
- The battery may be fully drained—please recharge the device before trying again.

**earzone** Earzone Co., Ltd.

Room 706, STX-V Tower, 128, Gasan Digital 1-ro, Geumcheon-gu, Seoul, Republic of Korea

**Main Contact Number** +82 1644-4532 **E-mail** ear@earzone.co.kr www.earzone.co.kr



## **FCC Statement**

This device complies with part 15 of the FCC rules. Operation is subject to the following two conditions: (1) this device may not cause harmful interference, and (2) this device must accept any interference received, including interference that may cause undesired operation.

Changes or modifications not expressly approved by the party responsible for compliance could void the user's authority to operate the equipment.

NOTE: This equipment has been tested and found to comply with the limits for a Class B digital device, pursuant to part 15 of the FCC Rules. These limits are designed to provide reasonable protection against harmful interference in a residential installation. This equipment generates uses and can radiate radio frequency energy and, if not installed and used in accordance with the instructions, may cause harmful interference to radio communications. However, there is no guarantee that interference will not occur in a particular installation. If this equipment does cause harmful interference to radio or television reception, which can be determined by turning the equipment off and on, the user is encouraged to try to correct the interference by one or more of the following measures:

- Reorient or relocate the receiving antenna.
- Increase the separation between the equipment and receiver.
- Connect the equipment into an outlet on a circuit different from that to which the receiver is connected.
- Consult the dealer or an experienced radio/TV technician for help.

The device has been evaluated to meet general RF exposure requirement. The device can be used in portable exposure condition without restriction.

The device has been evaluated to meet general RF exposure requirement.  
The device can be used in an uncontrolled environment without restriction.