



CMYK:75 45 0 0

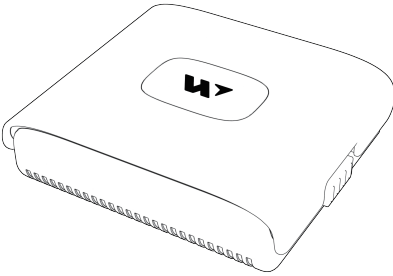
CMYK:74 73 65 32

110mm

80mm

# USER GUIDE

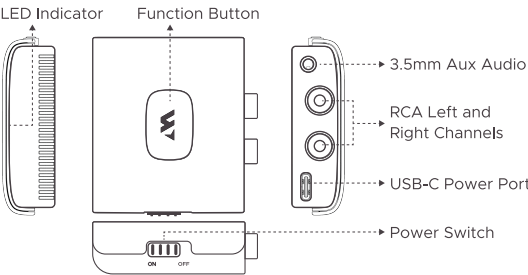
Bluetooth Receiver  
(BR0 Series)



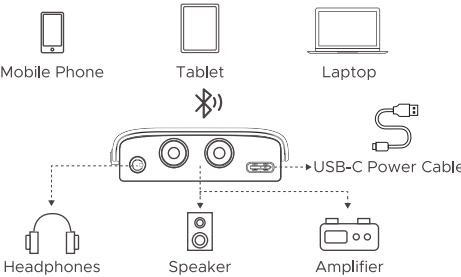
Please feel free to contact us if you need any help.  
You will get a friendly and efficient response within 18 hours.

[support@warrky.com](mailto:support@warrky.com)

## Product Schematic



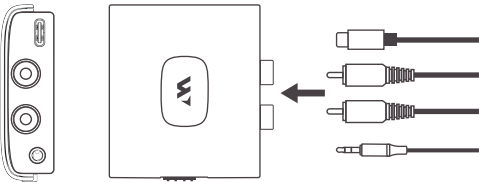
## Connection Schematic



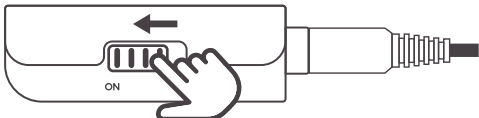
- 01 -

## Connection Steps

### 1. Connect the power supply and audio cable

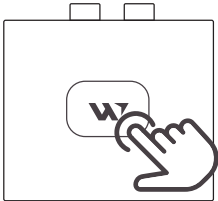


### 2. Turn on the power switch



- 02 -

### 3. press and hold the function button until the indicator light flashes rapidly



### 4. Pair and connect to BR01 via Bluetooth on your phone



- 03 -

## Package Contents

- Bluetooth Receiver
- RCA to 3.5mm Audio Cable (or 3.5mm to RCA)
- USB-C Power Cable
- 5V 1A Power Plug
- User Guide

## Function Buttons and Light Status

	Unpaired	Pairing	Paired
Function Button	Long Press to Start Pairing		Pause/Play
LED Indicator	Slow Flashing	Rapid Flashing	Steady On

- 04 -

## Troubleshooting & Operation Guide

### If there is no sound

1. Check the volume settings of input and output devices.
2. Some audio devices have an AUX out port; this product needs to be connected to the Aux in port.
3. Some audio devices may need to switch the audio output channel.

### Add a new device

Long-press the top button to enter pairing mode, then pair and connect via Bluetooth on the new device.

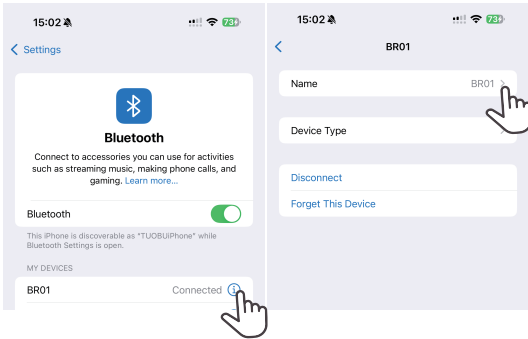
### Switch devices

Disconnect from the original device in its Bluetooth settings, then connect with another device.

- 05 -

### If you have multiple units, here's how to tell them apart:

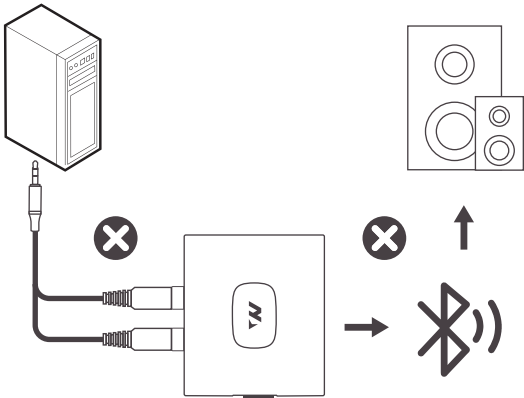
1. Go to your phone/tablet's Bluetooth settings.
2. Find each BR01 device in the list (they may all show as "BR01" initially).
3. Tap the icon next to a BR01 device to enter its settings.
4. Select Rename and give it a unique name (e.g., "BR01-LivingRoom," "BR01-Office").



- 06 -

### Note:

This product is designed exclusively for receiving Bluetooth signals and does not support Bluetooth transmission. It can only connect to external Bluetooth-enabled devices (e.g., smartphones, tablets, laptops) as a receiver to stream audio or data from them. It cannot act as a transmitter to send signals to other devices.



- 07 -

## Customer Support

a. More questions, welcome to contact us

-[support@warrky.com](mailto:support@warrky.com)

-"Ask a question" on Amazon seller page

-[www.warrky.com](http://www.warrky.com) >>>SUPPORT

You will get fast and friendly support within 18hrs even during weekends and holidays.

b. Activate life-time unconditional warranty via

[www.warrky.com](http://www.warrky.com)>>>WARRANTY

c. For any suggestions or collaboration proposals, welcome to leave your ideas via [official@warrky.com](mailto:official@warrky.com)

- 08 -

**FCC Warning:**

This equipment has been tested and found to comply with the limits for a Class B digital device, pursuant to part 15 of the FCC Rules. These limits are designed to provide reasonable protection against harmful interference in a residential installation. This equipment generates, uses and can radiate radio frequency energy and, if not installed and used in accordance with the instructions, may cause harmful interference to radio communications. However, there is no guarantee that interference will not occur in a particular installation. If this equipment does cause harmful interference to radio or television reception, which can be determined by turning the equipment off and on, the user is encouraged to try to correct the interference by one or more of the following measures:

- Reorient or relocate the receiving antenna.
- Increase the separation between the equipment and receiver.
- Connect the equipment into an outlet on a circuit different from that to which the receiver is connected.
- Consult the dealer or an experienced radio/TV technician for help.

**Caution:** Any changes or modifications to this device not explicitly approved by manufacturer could void your authority to operate this equipment.

This device complies with part 15 of the FCC Rules. Operation is subject to the following two conditions:

(1) This device may not cause harmful interference, and (2) this device must accept any interference received, including interference that may cause undesired operation.

This equipment complies with FCC radiation exposure limits set forth for an uncontrolled environment. This equipment should be installed and operated with minimum distance 0cm between the radiator and your body.