

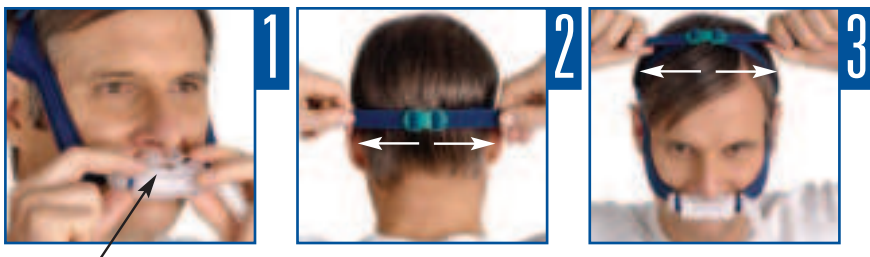
Mirage Swift™ II

NASAL PILLOWS SYSTEM

Quick Fitting Guide

English • Deutsch • Français • Italiano • Español • Português • Svenska

Important: Ensure ResMed logo faces outward / Wichtig: Stellen Sie sicher, dass das ResMed-Logo nach außen zeigt / Important : veillez à ce que le logo ResMed soit tourné vers l'extérieur / Importante: Assicursi che il logo ResMed sia rivolto verso l'esterno / Importante: Asegúrese de que el logotipo de ResMed esté situado hacia fuera / Importante: Certifique-se de que o logótipo da ResMed está virado para fora / Viktigt! Se till att ResMeds logo är vänt utåt



ResMed logo / ResMed-Logo /
Logo ResMed / Logo ResMed /
Logotipo de ResMed /
Logótipo da ResMed / ResMed
logo



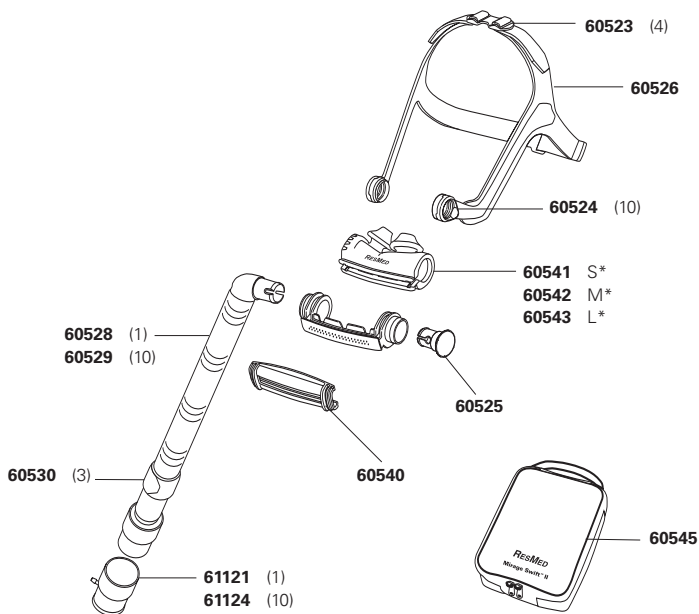
Components Card

Mirage Swift II Nasal Pillows System

Europe	60513	France	60518	Asia-Pacific	60515
ANZ	60514	UK	60516		

Frame System (no headgear) / Maskenhaltersystem (kein Kopfband) / Support (pas de harnais) / Telaio (senza copricapo) / Sistema de armazón (sin arnés para la cabeza) / Sistema de armação (sem arnês) / Ramsystem (ingen hätta)


60537 S* **60538 M*** **60539 L***



S* small / small / petit / small / pequeña / pequeno / small

M* medium / medium / médium / medium / mediana / médio / medium

L* large / large / large / large / grande / grande / large

 For details, refer to the *Mirage Swift II Nasal Pillows System User Guide*. Specifications may change without notice. Mirage and Mirage Swift are trademarks of ResMed Pty Ltd and Mirage and Swift are registered in U.S. Patent and Trademark Office.
© 2006 ResMed. 1011041/1 06 06