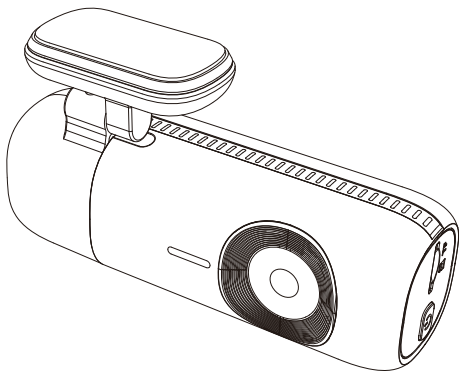




V2.1

**REDTIGER**  
CAM GOOD



# **F9** User Manual

[redtigercam.com](http://redtigercam.com)

The information in this manual is subject to change without notice.

# Content

Notice . . . . .	2
Product Specifications . . . . .	3
Package Contents . . . . .	4
Appearance . . . . .	5
Buttons and Functions . . . . .	6
APP and Wi-Fi Function . . . . .	7
How to Play Using a Computer . . . . .	9
Installation . . . . .	11
Trouble Shooting . . . . .	15
Customer Service Center . . . . .	17

## Notice

- Please read this manual carefully before operation and keep it for future reference. It will be helpful should you encounter any operational problems.
- Improper installation will void the manufacturer's warranty. The installation instructions do not apply to all types of vehicles and are written as guidelines to assist in installing the system.
- Consult with an experienced technician if you are not comfortable installing the device on your own.
- Please make sure to read and understand local laws and regulations regarding cameras and their use in a vehicle. Laws may vary by state.
- Do not obscure the view of the road ahead or obstruct the deployment of any airbags in the event of an accident.
- When not in use, please disconnect the car adapter from both the 12/24V DC outlet in your vehicle and the device itself.
- Only clean the device with a soft dry cloth, for tough dirt, apply some neutral detergent diluted in 5 to 6 parts water on a soft cloth.
- Note that alcohol, thinner, benzene, etc. could cause damage to the paint or coatings on the device.
- Avoid making contact with the lens as this may cause damage.
- The video recordings made by this device are intended for personal use only.
- While driving, do not adjust the controls of your device, as it may draw your attention from your surroundings.

## Product Specifications

Item Name	F9 Dash Cam	Video Format	TS
Photo Format	JPG	Input	DC 5V-2.5A
Recording Resolution	Front 2160P @30fps+Rear 1080P@25fps Front 1440P @30fps+Rear 1080P@25fps Front 1080P @30fps+Rear 1080P@25fps		
Operating Temperature	-4°F~158°F	Lens	F1.5 front camera F2.0 rear camera
Memory Card	32GB-256GB	Warranty Period	18 months

### Note:

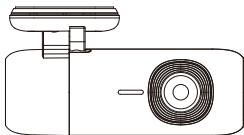
In the event of a problem during use, we will replace the device free of charge within 18 months from the date of purchase, in addition to lifetime technical support.

### Extended Warranty Service:

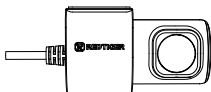
You can also benefit from a 6-month warranty extension by registering your device on our website.

URL: <https://www.redtigercam.com/pages/warranty-form>

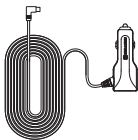
# Package Contents



• F9 4K Dash Cam



• 1080P Rear Camera



• Power Supply Cable with Car Charger



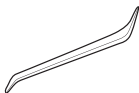
• Rear Cam Cable



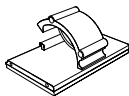
• Electrostatic Sticker



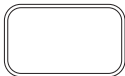
• User Manual



• Tool

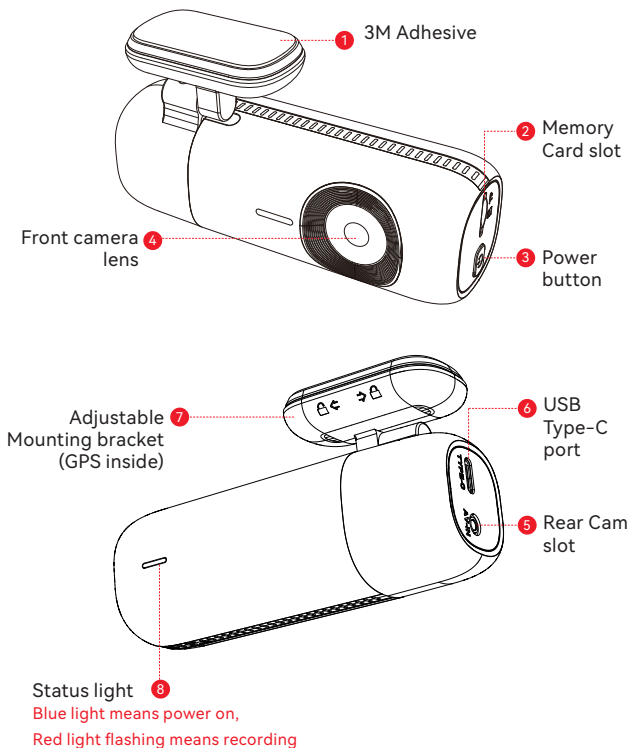


• Cable Clips\*5



• 3M Adhesive

## Appearance



## Buttons and Functions



### **Power Button**

Power on state

- Long press the power button to reset the dash cam.
- Short press to lock/unlock the video.

Power off state

- Short press to turn on the dash cam.



### **Indicator light**

- The indicator light will flash during recording

### **Note:**

- In order to ensure a smooth user experience, it is suggested that you format your memory card once a month.

# App and Wi-Fi Function

## • How to connect Wi-Fi?

### 1. Download the app

You can download the app from:

- Official Website: <https://www.redtigercam.com/pages/app>
- QR Code located on your dash cam (may be located on the right side)
- Search “Redtiger” in the Apple App Store or Google Play Store



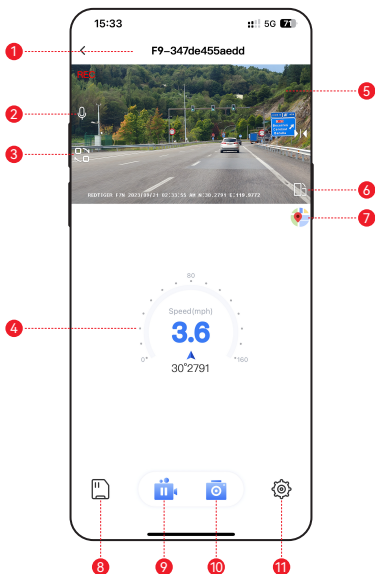
2. Turn on the Wi-Fi on the dash cam, the Wi-Fi and SSID and password will appear on the display.
3. Open Redtiger App> jump to the Wi-Fi connection interface according to the steps> find the Wi-Fi of the dash cam> enter the password to connect.  
(The default password is 12345678)
4. After successfully connecting to Wi-Fi, return to the App to use it.

## • View/Download/Delete/Share Video

1. Click the icon on the main interface to view video and image files.
2. Long press the video file to select it, then choose whether you would like to download or delete it.
3. Return to the App home page and select the Album> Open and watch/share it.



## • App Home



- 1 Native Wi-Fi Name
- 2 Turn on/off recorded sound
- 3 Switch recording screen
- 4 GPS information
- 5 Video play window
- 6 Rotate the video screen left and right
- 7 Map
- 8 Dash cam file
- 9 Pause/start recording
- 10 Take pictures
- 11 Dash cam settings

## • Over-The-Air Updates

**Note:** Please update the Redtiger App to the latest version to use this function.

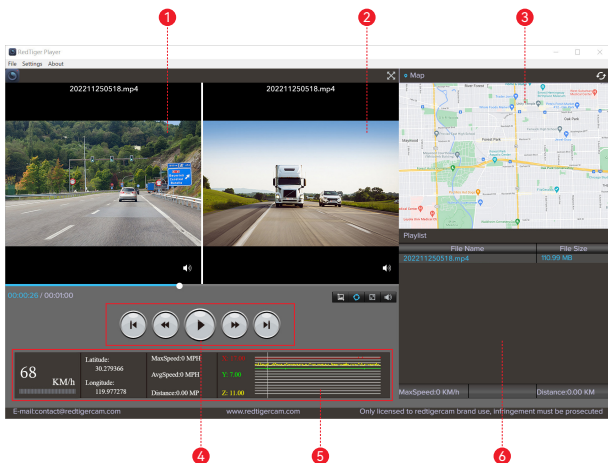
1. To perform an over-the-air update, disconnect your phone from the dash cam's Wi-Fi network. Connect your phone to LAN (not the dash cam's Wi-Fi) for 5 seconds, then disconnect. Reconnect to the dash cam's Wi-Fi network.
2. Once Wi-Fi connection is successful, open the Redtiger App to start using it. If new software is detected, the App page will indicate the availability of an update.
3. To perform the update, click on "Upgrade Now". The Redtiger app will prompt you to download the update package.
4. Connect the dash cam to send the update package. Do not power off the dash cam during the upgrade process. Once the upgrade is completed, the app will display the upgrade success message, and the dash cam will automatically restart.

## How to Play Using a Computer

We recommend using REDTIGER Player as the correct video player to watch/play videos. It can also view Google Maps.

You can Download it for free on Mac or Windows from the following link: <https://www.redtigercam.com/pages/gps-player>

You can choose different playback modes in Settings > Video Playback Mode. You can set playback speed, language, map, and various other functions.



- ① Video play window (Front)
- ② Video play window (Rear)
- ③ Map and track display
- ④ Play control panel
- ⑤ Speed and driving state indication
- ⑥ Play list

### Note:

If the video files of front and rear road tracks are recorded synchronously and loaded into the playing list at the same time, they can be played separately in split left and right screens.

When you find the desired video file, hold down the left mouse button and drag the desired files to the video play window to play it.

## Installation

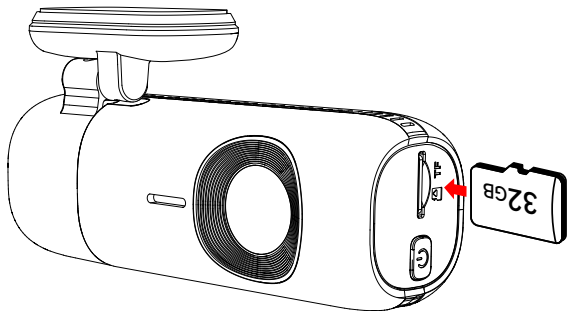
### ⚠ WARNING

Please make sure to connect all cameras and wires before powering on the camera screen, otherwise the camera will not work properly. Please follow the instructions below for the first-time installation of the Redtiger dash cam.

Scan the QR code on the right to view the installation tutorial video.

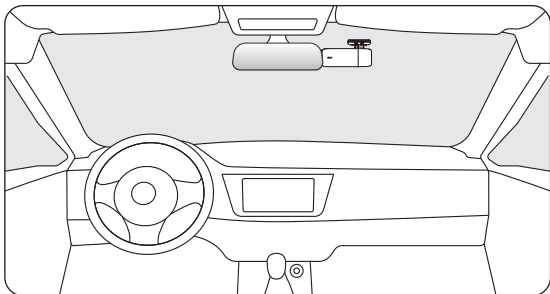
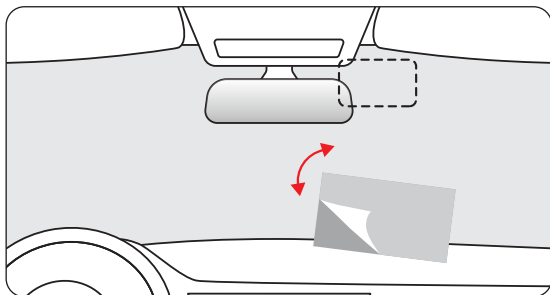
### • Insert Memory Card

Insert the memory card into the dash cam, ensuring that it is oriented correctly so that the gold contacts are facing towards the screen of the dash cam. Push the memory card until it clicks into the slot.



## • Front Camera Installation

Peel off the electrostatic sticker on the cellophane and transfer it to where you want to stick it. Attach the front camera to the electrostatic sticker and firmly press to secure it.

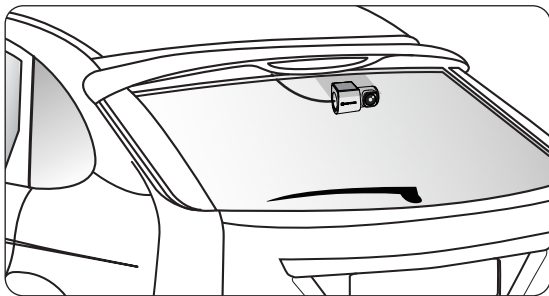


## • Mount The Rear Camera

- 1 Open the trunk of the vehicle, remove the screws, remove the plastic panel.
- 2 Pry open the license plate light and pass the rear camera cable through the hole where the license plate light is located.

### Note:

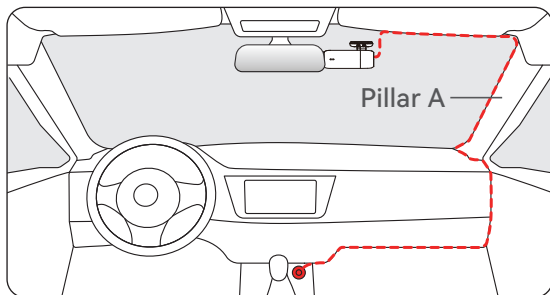
This rear camera is specially designed to tolerate a variety of environmental conditions, and is better suited installed on the outside of the vehicle. The lens parameters are set with the assumption that the camera will be used outside, therefore it is recommended that you install the camera on top of the license plate frame. If this is not possible, we have a license plate frame bracket to solve this issue.



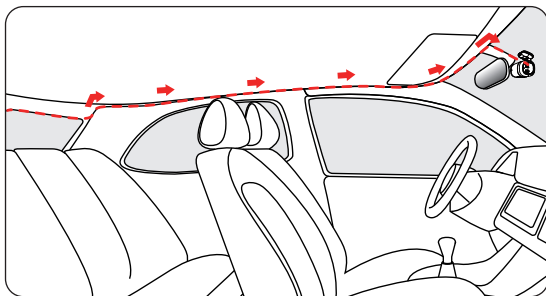
## • Wire Layout In The Vehicle

- 1 The car charger is connected to the cigar socket.
- 2 Connect the other end of the car charger to the dash cam.

- 3 Use the crowbar to run the power cable along the front windshield and the roof, and hide the cable down the A-pillar, so as not to block the driver's sight and cause danger.



- 4 Connect the interface of the rear cable with the interface of the rear cam cable.
- 5 Hide the rear cam cable along the gaps between the front windshield and the ceiling, between the car body and the ceiling on the side of the passenger seat, and between the rear seats and the ceiling.



# Trouble Shooting

## • WIFI CONNECTION GOES WRONG

### Connection Prepare

1. Mobile data / VPN is off
2. 16 ft less close to your F9
3. Only allowed 1 device connection

### Connection Notice

1. WiFi password: 12345678
2. Connect only this time

## • OTHER PROBLEM

### Won't enter Parking Mode

1. Hardwire kit needed (Need to purchase separately)
2. App shows "ACC disconnected" pop-up after connecting the hardwire kit means the connection is wrong.

### Camera always on after Car turned down

1. Powered by hardwire kit-Wrong connection of Red wire and Yellow wire.
2. Powered by car charger-The cigarette lighter still has power after parking.

## • OTHER PROBLEM

### Over Heat

Camera should stay between -4 °F - 158 °F



## Trouble Shooting

### • RECEIVED DEAD CAMERA ?

Use USB cable to connect your camera with computer and verify that the indicator is blinking.

If not, please Contact Redtiger directly.

### • ULTIMATE SOLUTION

Use different charging ways to verify if the camera work.

1. Unplug all cables from the camera (make sure you can perform the following steps to troubleshoot).
2. Plug Type-C USB charger to see if the camera working. If not, please use your personal USB charge and check again.
3. Check your SD card is U3 Class10, if not, please change to one that is U3 Class10.
4. Plug SD card and see if the camera working, if not, please contact Redtiger.
5. If the methods above don't solve your problem, feel free to contact Redtiger and please leave your contact information and current address which may be needed if a replacement is warranted.

## Customer Service Center

If you have any problems with the function or installation of your dash cam, please feel free to reach out to us.



Help Center



WhatsApp



### For more information:

After sales: [help@redtigercam.com](mailto:help@redtigercam.com)

Business Cooperation: [contact@redtigercam.com](mailto:contact@redtigercam.com)

Customer Phone Service: +1 888 966 8028 (US)



**REDTIGER**  
CAM GOOD

Check us out here.  
Product and service are the foundation of Redtiger.

Instagram: @redtiger\_dashcam  
Facebook: Redtiger Dash Cam



[www.redtigerscam.com](http://www.redtigerscam.com)