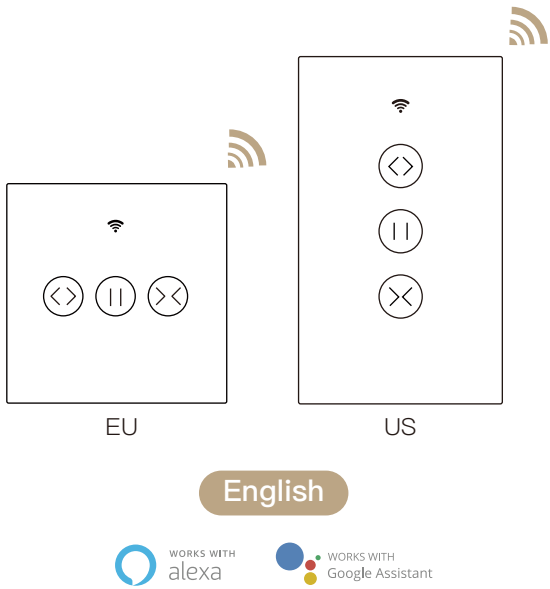


Instruction Manual Smart Curtain Switch

Wi-Fi+RF

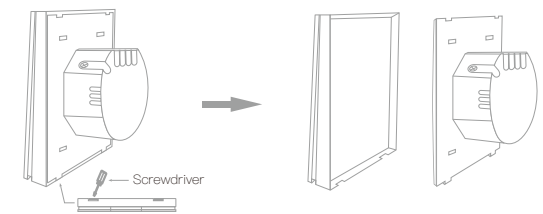


English

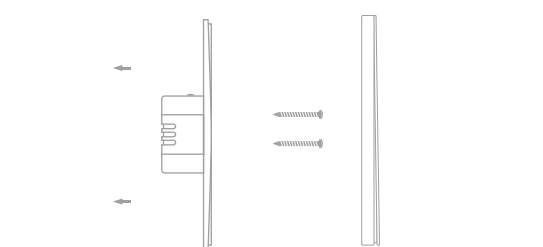
1

Step 5

- Open the switch panel from the bottom of the switch with a screwdriver



- Mount the switch with the provided screws and snap the wall plate on it.



Step 6

Turn the power back on at the circuit breaker and then switch the light on.

English

6

How to pair/reset Wi-Fi

Press the switch button for 6 times,and hold on the 6th time,then release until the blue indicator on the switch flashes fast.Pair/Reset is successful.

3.2 Remote radio frequency(RF)link method: Pair and clear up the RF code

1. How to pair the RF code

Press and hold the touch button until you hear "Di"(1 time), and press the button on the remote control switch.Then it would begin to enter the remote radio frequency(RF)pairing.

2. How to clear up the RF code

Press the switch button for a long time until you hear "Di"(1 time), and then keep pressing the button until you hear "Di-Di-Di-Di"(4 times).The RF code is now cleared up.

Note:This operation can only clear one button,repeat the operations for clearing other codes.

SERVICE

- During the free warranty period, if the product breaks down during normal use, we will offer free maintenance for the product.
- Natural disasters/man-made equipment failures, disassembly and repair without the permission of our company, no warranty card, products beyond the free warranty period, etc., are not within the scope of free warranty
- Any commitment (oral or written) made by the third party (including the dealer/service provider) to the user beyond the warranty scope shall be executed by the third party
- Please keep this warranty card to ensure your rights
- Our company may update or change the products without notice. Please refer to the official website for the updates.

RECYCLING INFORMATION

All products marked with the symbol for separate collection of waste electrical and electronic equipment (WEEE Directive 2012/19 / EU) must be disposed of separately from unsorted municipal waste. To protect your health and the environment, this equipment must be disposed of at designated collection points for electrical and electronic equipment designated by the government or local authorities. Correct disposal and recycling will help prevent potential negative consequences for the environment and human health. To find out where these collection points are and how they work, contact the installer or your local authority.

English

16

Product Description

This new designed glass panel wireless touch smart curtain switch is designed with many new updates. The WiFi+RF version easily replaces traditional switches with a variety of ways to control. Multi-control association is added into Tuya Smart Life App as a new feature to control with other smart switches, together with the backlight on/off and relay status when power off. Its scratch resistance glass panel is suitable for different decoration styles with its best value.

Safety Information

Risk of Electric Shock: Electricity can cause personal injury and property damage if handled improperly. If you are not sure about any part of these instructions, please seek professional assistance from a qualified electrician.

Technical Parameters:

Model: WS-USR-C / WS-EUR-C
Working Voltage: 90-250V AC, 50/60Hz
Max. Current: 2.5A/Gang; Total 2.5A
Load Power: ≤600W
Standby Power: ≤0.5W
Wireless Protocol: Wi-Fi 2.4GHz IEEE 802.11 b/g/n
Standby Consumption: 0.1mA
Wireless Range: 30 Meters(Indoor)

Warnings:

Turn off the power at the circuit breaker and test that power is off before wiring.

English

2

Add Devices

1 Download Smart Life App



Please scan the QR code or download Smart Life on App store.

2 Registration or Log in

- Download "Smart Life"Application

- Enter the Register/Login interface;tap "Register" to create an account by entering your phone number to get verification code and "Set password".Choose "Log in" if you already have a Smart Life account.

3 Configure the APP to the switch

- Preparation: Ensure the switch has been connected with electricity;ensure your phone has been connected to Wi-Fi and is able to connect to the Internet.

English

7

Enter Smart Life Skill in Alexa APP

1. Complete product networking configuration in the App

Complete the device's networking configuration according to the prompts in the App.
Note: In the App, change the name of the device to an easily identifiable name such as Alexa; names are usually in English, such as "bed light".

2. Configure the Amazon Echo device

(If you have already configured Amazon Echo, you can skip this step. The following instructions are based on the iOS client.)

- Make sure you Amazon Echo device is powered on and connected to a Wi-Fi network.
- Open the Alexa App on your phone. After successful login, tap on the menu in the upper left corner of the Home page, select "Settings" and tap "Set Up A New Device" to set up the Amazon Echo.
- Choose your Amazon Echo device type and language for connecting. Press and hold the small dot on the device until the light turns yellow. Then tap "Continue" to connect to the hotspot.
- After connecting to the Amazon Echo hotspot, return to the page. At this point, the connection is successful.

WARRANTY CARD

Product Information

Product Name _____
Product Type _____
Purchase date _____
Warranty Period _____
Dealer Information _____
Customer's Name _____
Customer Phone _____
Customer Address _____

Maintenance Records

Failure date	Cause Of Issue	Fault Content	Principal

English

17

Installation

Note:

- Make sure that the power at the circuit breaker is off before wiring.
- Neutral Wire is required.Confirm the wall box contains a Neutral Wire(typically white).If the wall box don't have a Neutral Wire,please try another location at your home or call a professional electrician to install the switch.
- The wire colors indicated in this manual are the usual colors and may differ in some houses.
- Ensure the wire conductors are securely fastened to each wire.
- Ensure the Wi-Fi signal is steady and normally working before wiring.
- If you don't have any wiring experience,please call a professional electrician.

Step 1

- Turn off the circuit breaker and use the electrical tester to test the power.
- Ensure the circuit breaker is off before wiring.



Attention:

Please disconnect the power supply before installing or removing the device for avoiding irreversible damage on the device from the electric current or some unpredictable problems such as lamp flashing.

English

3

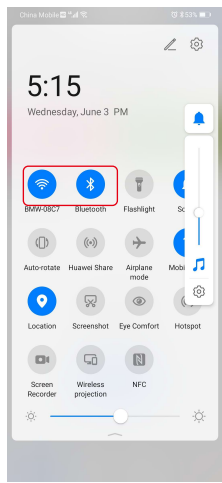
Note:

- The switch only supports 2.4G network.If you have connected 5G network,please disconnect 5G network firstly and connect 2.4G network.
- Tap the icon "+"on the top right to Select Device Type; tap "All" and choose "Wall Switch".

3.1Wi-Fi link method:

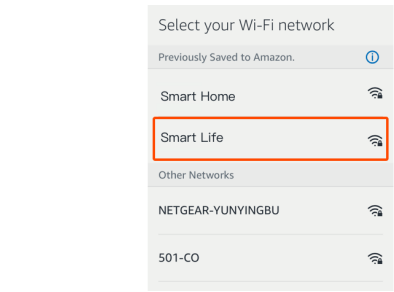
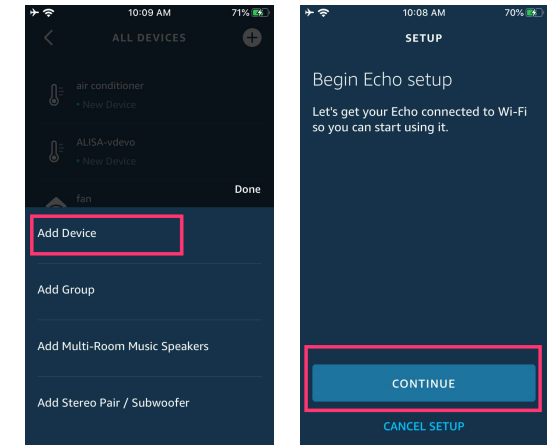
Pair and clear up the WiFi code(New Updated)

- Make sure your phone is connected to Wi-Fi and Bluetooth.



English

8



English

13

Thank you for your support and purchase at we Moes, we are always here for your complete satisfaction, just feel free to share your great shopping experience with us.



If you have any other need, please do not hesitate to contact us first, we will try to meet your demand.

FOLLOW US

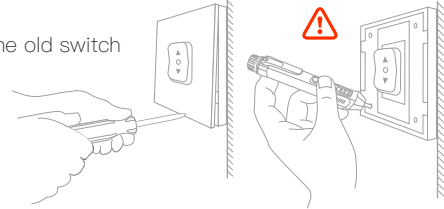
- @moessmart
- MOES.Official
- @moes_smart
- @moes_smart
- @moes_smart
- www.moeshouse.com

English

18

Step 2

- Remove the old switch



Step 3

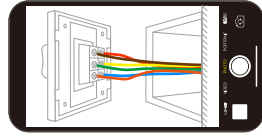
- Remove the switch and pull it away from the wall. Identify Line/Load Wire(Note:The color of your wire may be different from the color shown on the manual.)

Verify power is off

- We recommend you remove the faceplate from the old switch and use an electrical tester to test all wires connected to the switch to ensure there is no voltage in the circuit.
- You may need to turn off more than one circuit breaker.

Step 4

- Take pictures of the wiring

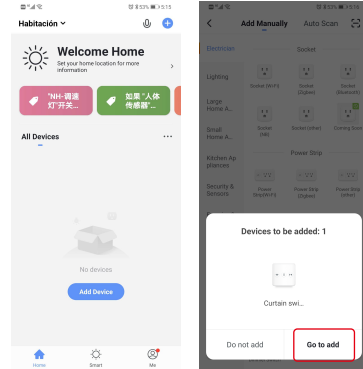


- Follow the wiring diagram to connect the switch wires to the wires in the wall box with the wire conductors.

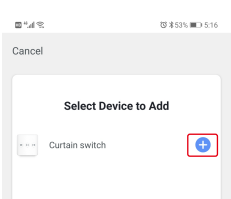
English

4

2.Open Smart Life/Tuya App and Click"+",then the prompt page will automatically show on the screen. Click "Go to add".



3.Select the device you want to add and click "+".



4.Enter Wi-Fi Password and click "Next",waiting for completing the connection.

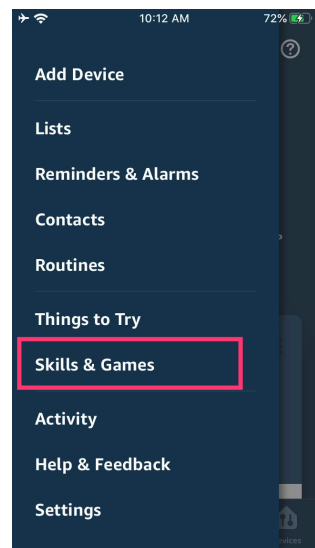
English

9

Tap "Continue" to proceed to the next step. Choose a Wi-Fi network to connect to. Amazon Echo will take a few minutes to try to connect to the network.
*After the network connection is successful, tap "Continue". An introduction video will appear. After the video ends, tap "Continue" to jump to the Alexa Home page. You have now completed the Amazon Echo's configuration process.

3. Key step —— Link Skill

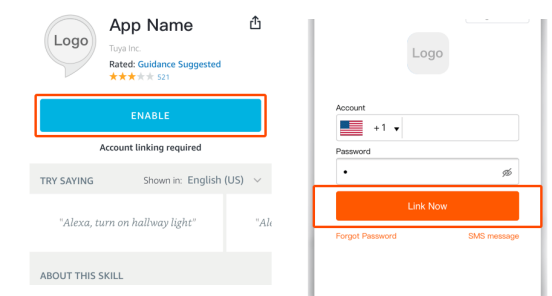
- Tap on "Skills" in the Alexa App menu.



English

14

- *Then search for "App Name". Tap "Enable" to enable the Skill.
- *Enter the App account and password, then tap "Link Now" to link your App account to enable the Skill. Now you can start your smart home journey.



4. Common commands

Control the device via voice commands, now you can control your smart device with Echo. You can control your device (such as your bedroom light) with the following commands:

- Alexa, turn on/off bedroom light. (Turn on/off the light)
- Alexa, set bedroom light to 50 percent. (Set the light to any brightness)
- Alexa, brighten/dim bedroom light. (Increase/weaken the brightness of the light)
- Alexa, set bedroom light to green. (Adjust the color of the light)

English

15

English

19