

# M-100MC

## SERVICE MANUAL

Ver. 1.1 2005.05

*US Model  
Canadian Model  
AEP Model  
E Model  
Tourist Model*



Model Name Using Similar Mechanism	NEW
Tape Transport Mechanism Type	MZ-100MC-14

### SPECIFICATIONS

Tape	MICROCASSETTE™ (normal position type)
Recording system	2-track 1-channel monaural
Speaker	Approx. 2.8cm (1 1/8 in.) dia.
Tape speed	2.4cm/s ( <sup>15</sup> / <sub>16</sub> ips), 1.2cm/s ( <sup>15</sup> / <sub>32</sub> ips)
Frequency range	High : 400 – 3,000Hz Normal, Low : 400 – 4,000Hz
Output	Earphone jack (minijack) for 8 – 300ohms earphone
Power output (at 10% harmonic distortion)	220mW
Battery life (Approx. hours) (EIAJ*)	
Batteries	Recording
Sony alkaline LR6 (SG)	16.0
Sony R6P (SR)	5.5

\* Measured value by the standard of EIAJ (Electronic Industries Association of Japan) (Using a Sony Microcassette MC-60)

Power requirements	3V DC Two R6 (size AA) batteries
Dimensions (w/h/d)	Approx. 126.0 x 68.0 x 40.8 mm (5 x 2 3/4 x 1 5/8 in.) incl. projecting parts and controls
Mass	Approx. 180g (6.4 oz) incl. batteries
Supplied Accessories	Hand strap (attached to the unit) (1) Microcassette tape (1) (EXCEPT US, Canadian, AEP model) Wind screen (1) (US model) R6 (size AA) batteries (2) (Tourist model) Earphone (1) (Tourist model)

Design and specifications are subject to change without notice.

**MICROCASSETTE™-RECORDER**

**SONY®**

9-923-382-12  
2005E02-1  
© 2005.05

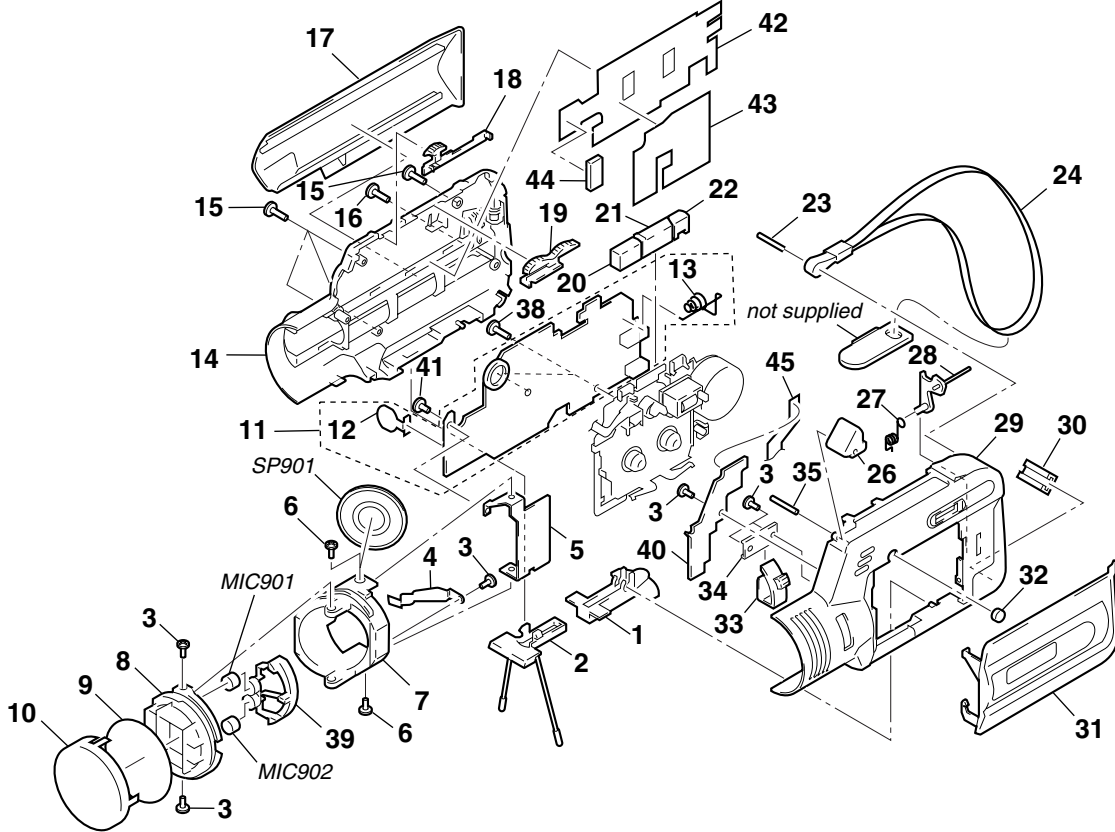
**Sony Corporation**  
Personal Audio Group  
Published by Sony Engineering Corporation

SECTION 5  
EXPLODED VIEWS

NOTE :

- -XX, -X mean standardized parts, so they may have some difference from the original one.
  - Items marked “\*” are not stocked since they are seldom required for routine service. Some delay should be anticipated when ordering these items.
- The mechanical parts with no reference number in the exploded views are not supplied.
  - Hardware (# mark) list and accessories and packing materials are given in the last of this parts list.
- Abbreviation  
E :Indication of country of origin  
IE :No indication of country of origin

5-1. FRONT SECTION



5-2. MECHANISM DECK SECTION  
(MZ-100MC-14)

