



**TOUGH TOOLS, HALF PRICE**

Technical Support and E-Warranty Certificate [www.vevor.com/support](http://www.vevor.com/support)

# **RV MACERATOR PUMP OPERATING INSTRUCTION**

**MODEL:NMMP12-G120-12-1**

We continue to be committed to provide you tools with competitive price.

"Save Half", "Half Price" or any other similar expressions used by us only represents an estimate of savings you might benefit from buying certain tools with us compared to the major top brands and does not necessarily mean to cover all categories of tools offered by us. You are kindly reminded to verify carefully when you are placing an order with us if you are actually saving half in comparison with the top major brands.

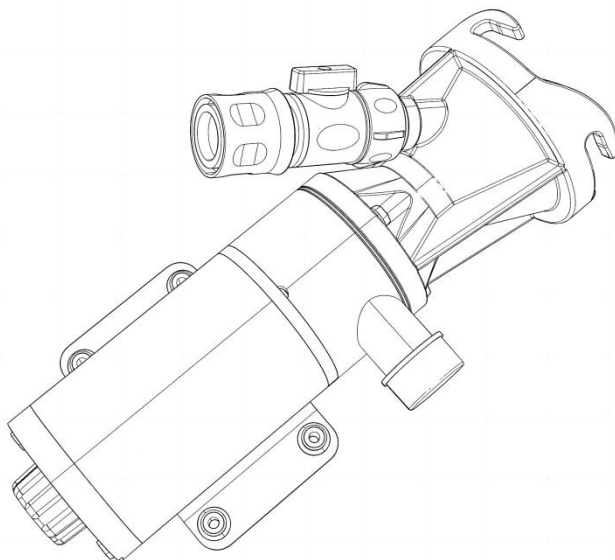


# VEVOR®

TOUGH TOOLS, HALF PRICE

## RV MACERATOR PUMP

MODEL:NMMP12-G120-12-1



### NEED HELP? CONTACT US!

Have product questions? Need technical support? Please feel free to contact us:



**CustomerService@vevor.com**

This is the original instruction, please read all manual instructions carefully before operating. VEVOR reserves a clear interpretation of our user manual. The appearance of the product shall be subject to the product you received. Please forgive us that we won't inform you again if there are any technology or software updates on our product.



Warning-To reduce the risk of injury, user must read instructions manual carefully.

## FEATURES

- Connects directly to the RV waste outlet
- Ability to dump longer distances
- Garden hose discharge port
- Ability to drain holding tanks at home

-Fresh water rinse capabilities

- Easy clean up and storage

## SPECIFICATIONS

**Pump:** Self-Priming Flexible Impeller with Stainless Steel Wear plate.

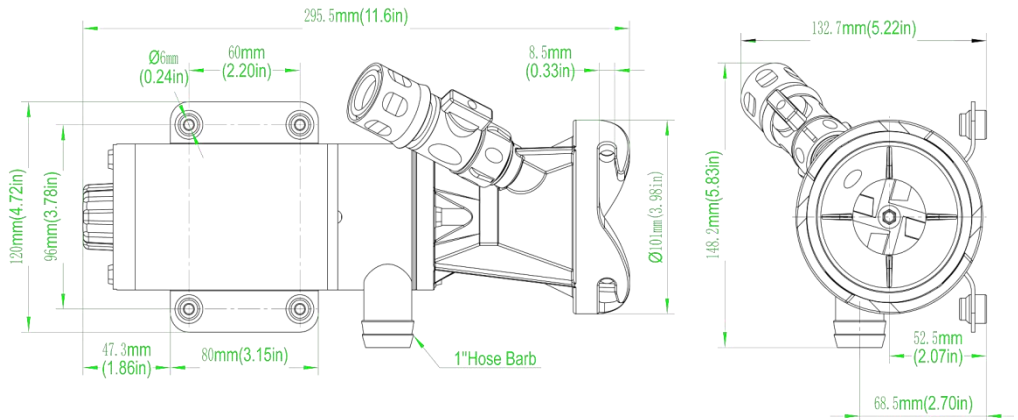
**Macerator:** Stainless Steel Cutter reduces particle size to 1/8" (4 mm) maximum.

**Seal:** Lip Type

**Ports:** Inlet - 3" (75 mm) RV Connector; Outlet - 1" hose barb.

**Motor:** 12 Vdc Permanent Magnet Type, Fully Enclosed, with Stainless Steel Shaft Intermittent Duty Only.

Model	NMMP12-G120-12-1
Size	295.5*148.2*132.7 mm
Rated Voltage	DC12V
Max Flow	12 GPM
Max lift	≥ 10 ft
Power cord length	7 ft



## PRODUCT LIST

Description	Quantity
Rv Macerator Pump	1
Detachable quick connection valve with switch	1
Metal hose clamp	2
1 inch clear hose	1
1inch+3/4inch NPT Copper joint	1
7 ft Power cord	1
Operating Instruction	1

## WARNING

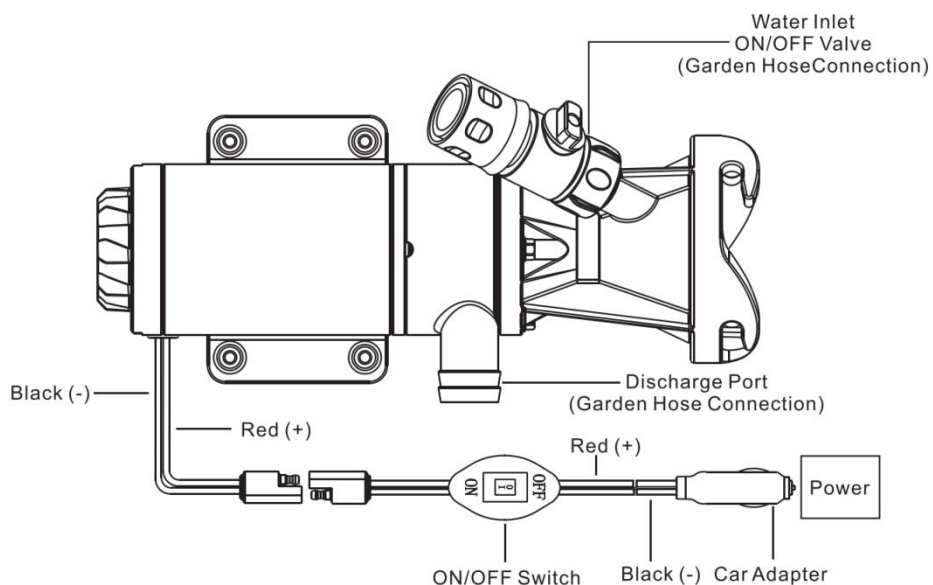
### APPLICATION

The NMMP12-G120 DC waste pump is the ideal solution for emptying holding tanks on recreational vehicles and avoiding dump stations. Empties a typical 40-gallon holding tank in less than 5 minutes. Do not run for more than.

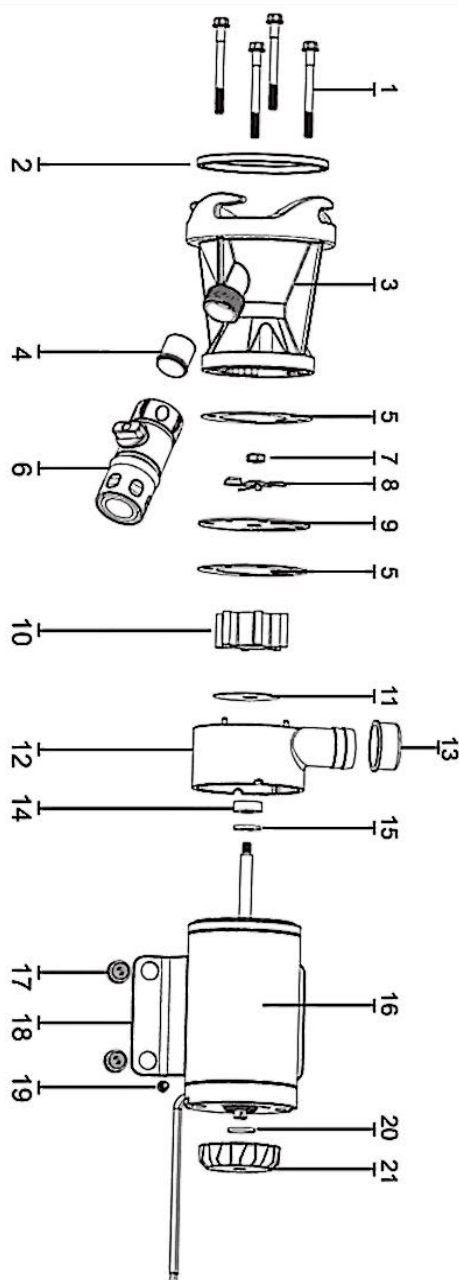
## WARNING

- 1.DO NOT RUN DRY FOR MORE THAN 30 SECONDS.
- 2.DO NOT MOUNT PERMANENTLY TO THE RV WASTE PORT.

## WIRING DIAGRAM



## DETAILED COMPOSITION



Key	Description	Key	Description
1	Screw	12	Impeller housing
2	Pump head gasket	13	Outlet Cover
3	Pump head	14	Oil seal
4	Pump head check valve	15	Seal
5	gasket	16	Motor
6	Resin connector	17	Rubber Feet
7	Screw Nut	18	Iron Plate
8	Blade	19	Screw
9	Round stainless steel sheet	20	Adjustment Cap O-ring
10	Impeller	21	Adjustment Cap
11	Convex stainless steel sheet		

## OPERATING INSTRUCTIONS

- 1.Remove the end cap from the drain pipe.
- 2.Install the waste pump on the drain in any convenient position, twisting clockwise to lock.
- 3.Be sure that the o-ring is on the pump adapter prior to installing the unit.
- 4.Install waste/garden hose on the discharge port adapter.
- 5.Install the rinse water hose to the on-off valve.
- 6.Open the black water valve, and turn on the pump.
- 7.Turn off the pump and open the gray water valve. Let gray water back flush the black water tank. Turn on the pump.
- 8.Turn off the pump, open the rinsing valve, and backfill tanks for rinsing. Turn on the pump. Turn off the rinse water. Drain tanks.
- 9.Close both drain valves, and turn on the rinse water (40 PSI max.) and pump. Rinse the pump and discharge hose.
- 10.Turn off the water and pump, and disconnect the hose and pump.
- 11.Store until next use.
- 12.Replace the end cap on the drain pipe.



## ELECTRICAL INSTRUCTIONS

1. Refer to electrical drawing below. Connect the switch assembly to RV waste pump motor wires with butt connectors (connect the red motor wire to the red switch wire; and the black motor wire to the black switch wire).
2. Connect the car adaptor to the power.
3. Fuse Replacement: The fuse is inside the car adaptor. Use an automotive 20 amp fuse for replacement.

12 Volt System	Min. Wire Size (20 Amps)	
Total Wire Length*	3% Drop	10% Drop
Feet [m]	GA	GA
1-10 [.3]	#10	#16
11-20 [3.3-6]	#8	#14
21-30 [6.4-9.1]	#6	#12
31-60 [9.1-18.2]	#4	#10

**\*length from the power source to the motor and back to the ground.**

## ELECTRICAL INSTRUCTIONS

### TURN OFF ALL POWER!

#### **-REAR END CAP/MOTOR SHAFT ACCESS**

Loosen the shaft knob (21), and put the D-type rotary knob mounted on one end of the rear end of the motor.

#### **-PUMP DISASSEMBLY**

Remove 4 cover screws (1). Remove cutter housing (3) and gasket (5). It is necessary to hold the motor shaft steady. Remove the hex nut (7) and

cutter blades (8). Insert a screwdriver into the slot on the motor shaft (see slot access above), or slip a thin wrench (9/32"[7mm]) behind the blades onto the flat of the motor shaft. Remove hex nut (7) and cutter (8). Remove the top wear plate (9), gasket (5), impeller (10), and bottom wear plate (11). Remove the impeller housing (12) and shaft seal (14). It is not necessary to remove the slinger (15).

## **-PUMP ASSEMBLY**

Ensure the slinger (15) is on the motor shaft. Ensure that the shaft seal (14) can be inserted into the right position of the impeller housing (12). Install the impeller housing (12) to the motor shaft. Install the bottom wear plate (11) insert to the impeller housing (11). Rotate the impeller (9) to the impeller housing (12) counterclockwise. Install the gasket (5) and top wear plate (9). Install the cutter blade (8) and align it with the motor shaft. Fixing the motor shaft with a screwdriver or a wrench(9/32H[7mm]) to tighten the hex nut (7). Installed gasket (5) and cutter housing (3) and tightened the screw (1).

## **DANGER**

Do NOT use the pump if any part of the housing switch or probe is cracked, broken, or missing.

Always disconnect the electric supply before attempting to install, service, relocate, or perform any maintenance. If the power source is out of sight, lock and tag in the open (off) position to prevent unexpected power application. Failure to do so WILL result in fatal electrical shock!

## TROUBLESHOOTING

**Please turn off the power before checking the fault.**

Problem	Possible Cause	Corrective Action
The pump won't start or run	1 . Blown fuse 2 . Defective motor 3.You are connected to the wrong line.	1 . If blown , replace with fuse of proper size . 2 . Replace the pump . 3.Connect the circuit correctly according to the instruction circuit diagram.
The pump operates but delivers little or no water	1 . Something stuck in the blade. 2. The hose doesn't fit the machine.	1 .Remove residue from the blades. The blade is sharp. Please be careful of cuts. 2. Use the correct hose.
Pump is blocked	Something hard jammed the blade.	Power off, open the knob at the end of the motor in the counterclockwise direction and then rotating the bolt clockwise with a screwdriver to loosen the blade.

**\*There are any minor changes to the numbers included in the user manual without prior notice.**

**Made In China**

# **VEVOR<sup>®</sup>**

**TOUGH TOOLS, HALF PRICE**

**Technical Support and E-Warranty Certificate**

**[www.vevor.com/support](http://www.vevor.com/support)**