



# MAKE A DIFFERENCE

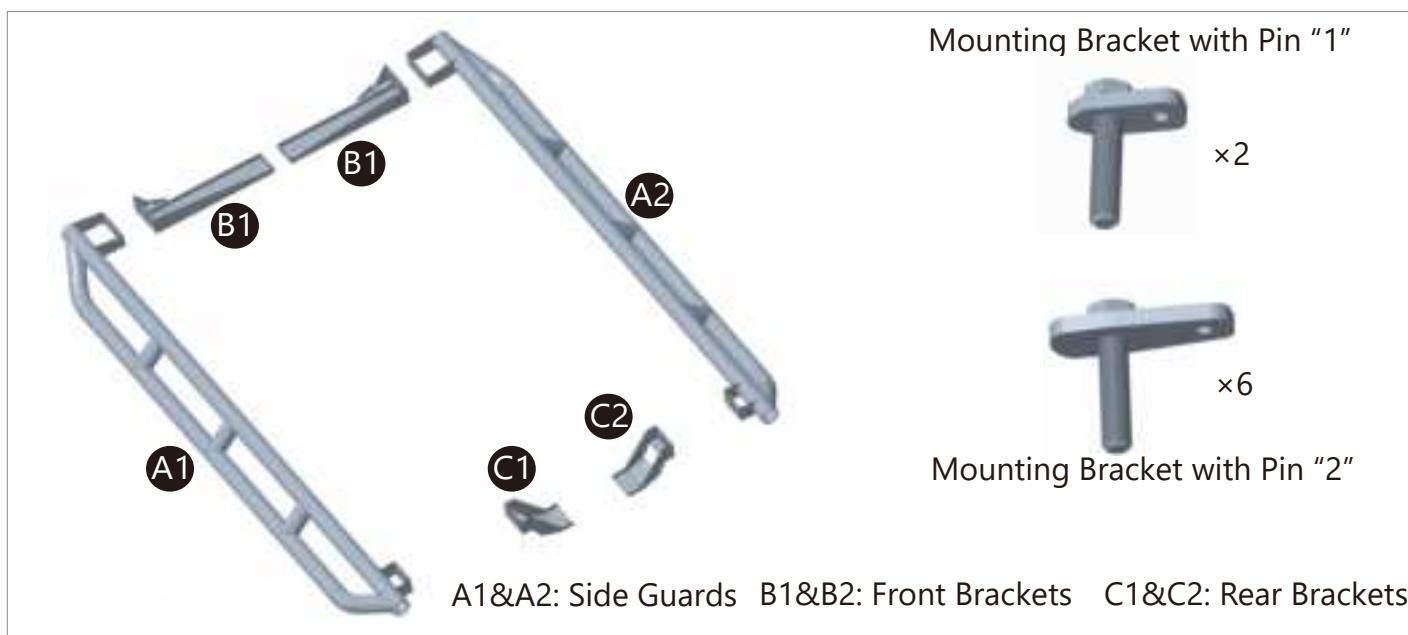
## Side Guards

**BXG.4701-S**

(INSTALLATION INSTRUCTION)

**ATTENTION** • Please verify all parts are present and read instructions carefully before starting installation.  
• Please feel free to contact your distributor if you have any kind of question about your purchase.

### CONTENTS



Qty	Part Name	Size(mm)	Picture	Qty	Part Name	Size(mm)	Picture
8	Hex Bolt	M8×20		16	Flat Washer	M8*20*1.5	
16	Split Lock Washer	M8		8	Flange Lock Nut	M8	

### TOOLS REQUIRED

◆ Drive Socket Ratchet Wrench

◆ 13mm Deep Socket

◆ 13mm Wrench

To view online instruction, please scan the QR code.

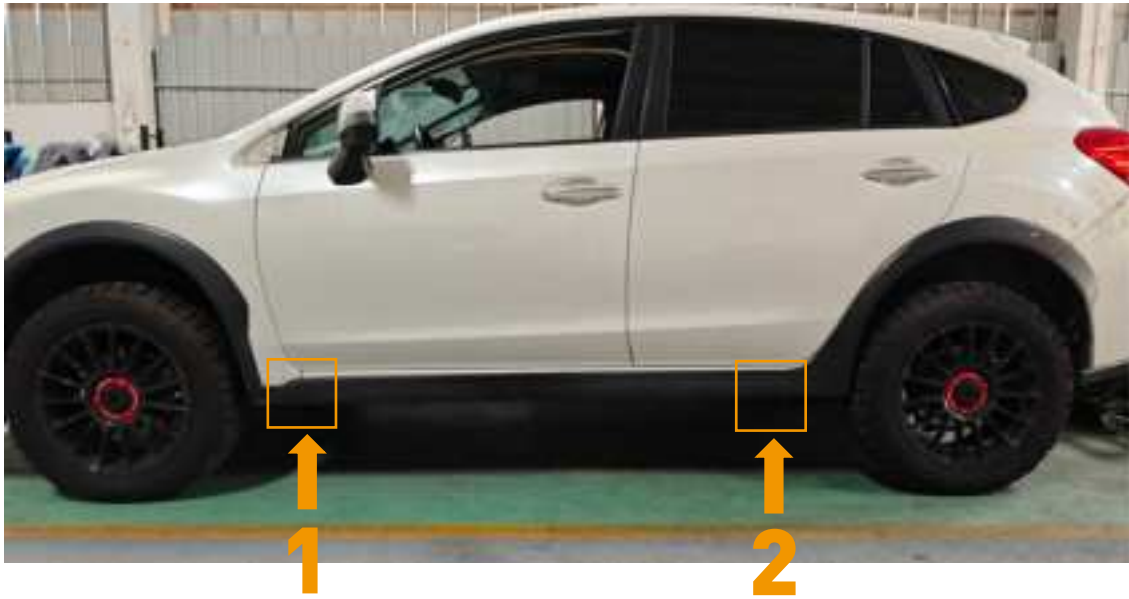


## 3 INSTALLATION INSTRUCTION

### Driver Side Installation

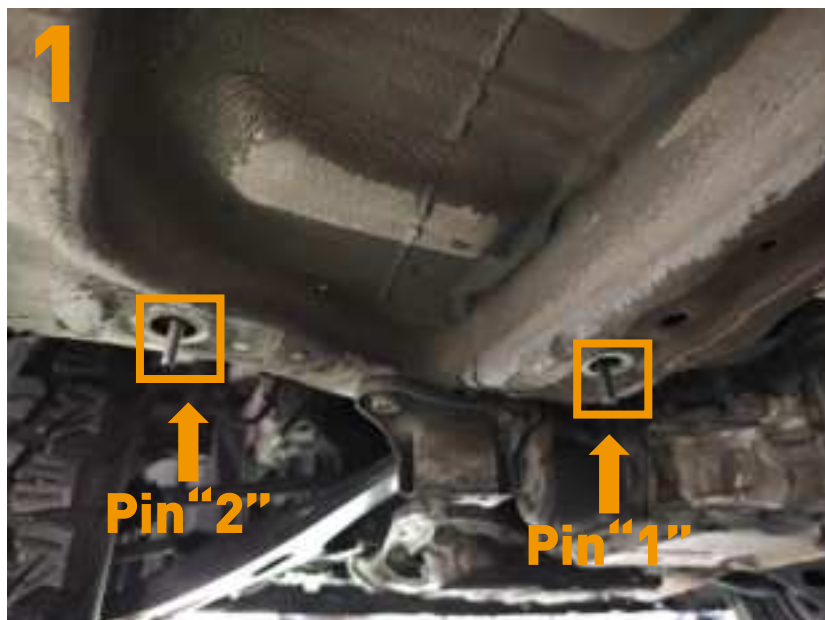
#### Step 1

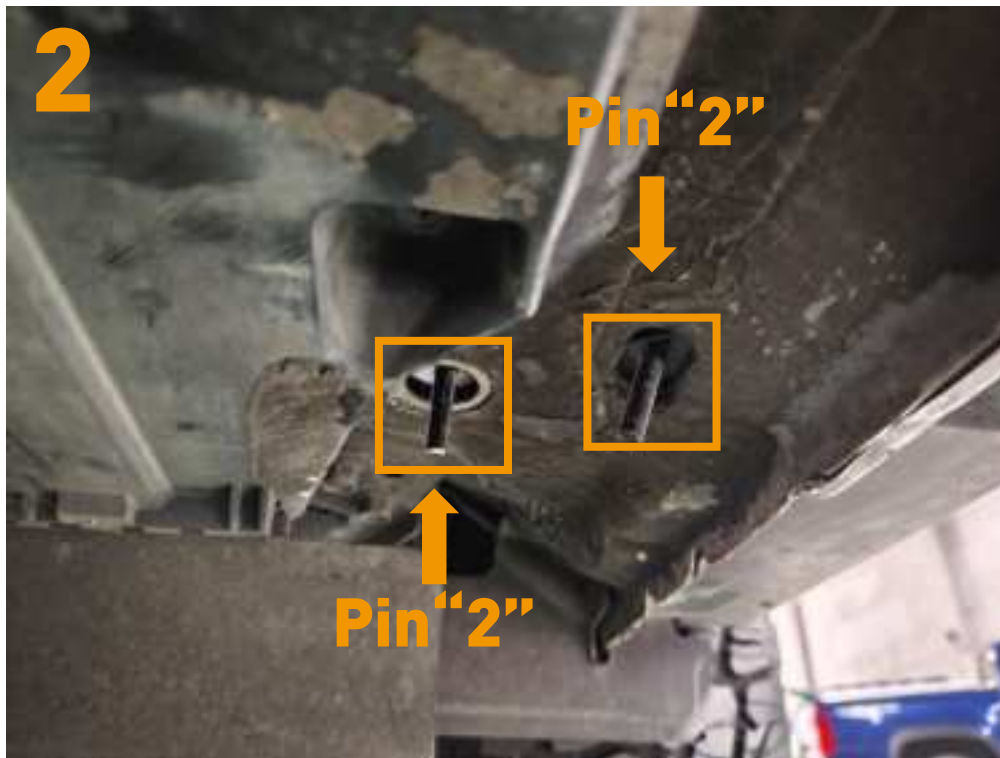
Find the factory installation holes.



Place the pin "1" & "2" into the factory mounting holes.

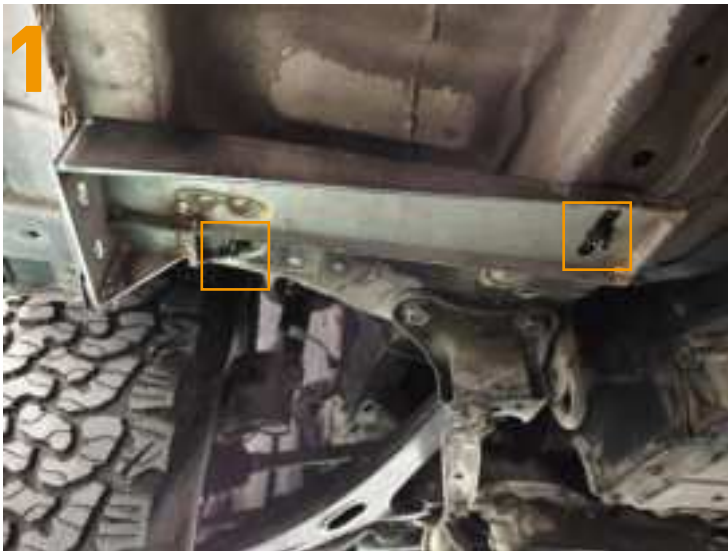
#### Step 2





Secure the front & rear mounting brackets to your vehicle. **Tighten all bolts.**

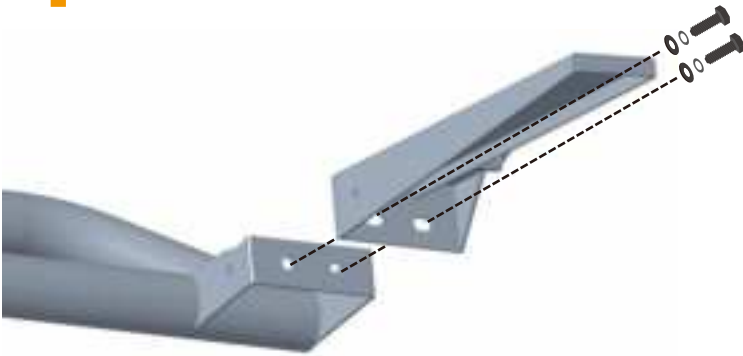
- (4) M8×20×1.5 Flat Washers
- (4) M8 Split Lock Washers
- (4) M8 Flange Lock Nut



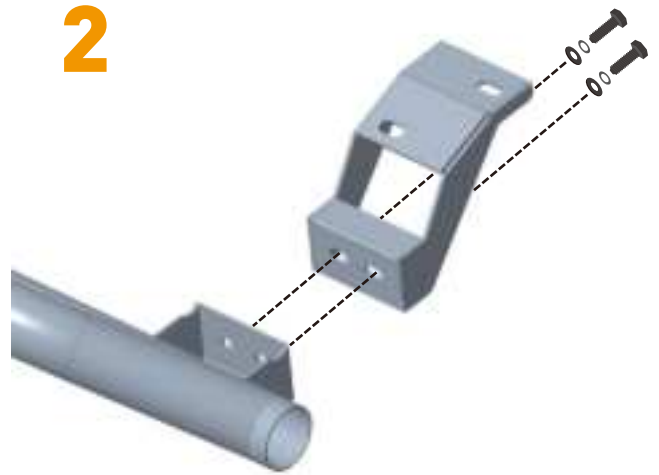
Secure the front mounting brackets to the side guard. **Do not fully tighten to allow adjustability.**

- (4) M8×20 Hex Bolts
- (4) M8 Split Lock Washers
- (4) M8×20×1.5 Flat Washers

1



2



Repeat all steps on the other side of the vehicle.

The installation is complete. We hope you enjoy a wonderful off-road life with this quality Hooke Road product!

