

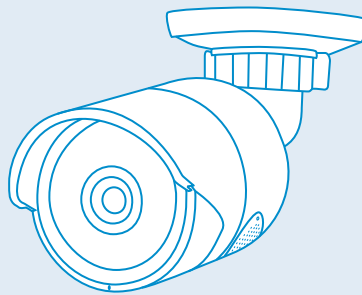


[www.techage.com](http://www.techage.com)  
[support@techage.com](mailto:support@techage.com)



# PoE AI Camera

— User Manual —



Security Expert for Your Home and Business

[www.techage.com](http://www.techage.com)

## Table of Content

- |  |
|--|
| 01. About the PoE AI Cam               |
| 02. View on Smart Phones               |
| 03. View on PC via IE                  |
| 04. View on PC Software                |
| 05. View on Third Parts Video Software |

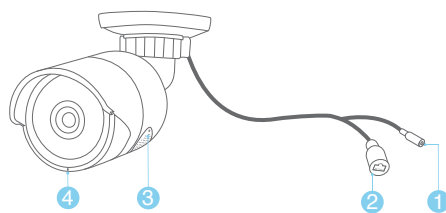


## Techage PoE AI Camera

Thank you for purchasing Techage security PoE AI Camera. Techage is committed to providing customers with high quality and reliable security products and solutions.

This quick user guide will help you learn fast and make it work easily. For detailed and latest user manuals, you can download the PDF user manual on our website : [www.techage.com](http://www.techage.com)

### 01 About the PoE AI Cam



1. DC Power Port: Power Input 12V 1A.
2. RJ45 Port: For Ethernet cable for video transmit and 48V DC Power Supply from NVR or PoE Switch.
3. Speaker : For two way talk ,alert Voice play , alarm sound or broadcast.
4. Microphone: For picking up audio (For different models, the position of the MIC may be different.)

This PoE camera is a AI Onvif camera, it can work with the third parts Onvif NVRs. It is with flood light on in the night after Humanoid Detection. It has a speaker, which is for two way talk and alert voice play. When human detect or alarm, it will play voice alert like : "Alert area, please leave" , "Hello, welcome ! " or alarm sound if this feature is turned on. (As factory defaults it is off.)

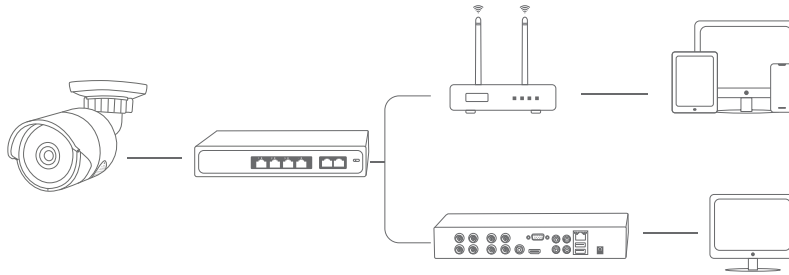
#### Tips:

More unique features about the PoE AI cam, please refer to Chapter 02 , 2.4

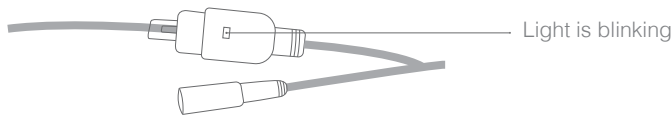
### 1. Connect your camera

Power on the camera and connect it to internet. There are two ways to power on the PoE AI cam and connect it to internet with Ethernet cable.

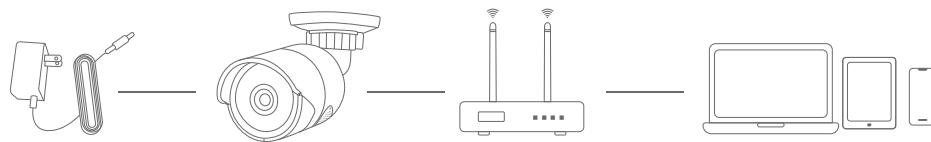
### 1.1 Use the PoE switch for power supply



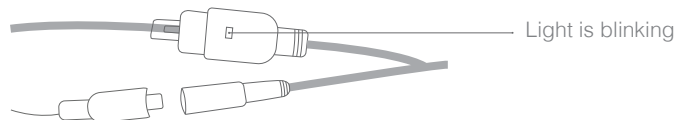
If the connection succeed , the LED light will be blinking.



### 1.2 Use the power adapter for power supply



If the connection succeed , the LED light will be blinking.



After you power on the PoE camera and connect it to internet with Ethernet cable. You can follow chapter 02 to view it on smart phones. If all ok after viewing on smart phones, you can find the proper spot for the camera and do the wiring and installation work.

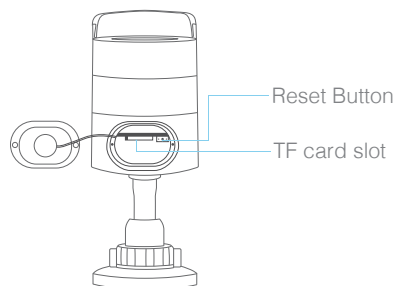
#### Tips:

When you install the PoE cameras outdoor, you need the waterproof lid for it. Here below is the diagram for connecting the waterproof lid.



## 2.TF Card and Reset Button

Take off the screws on the speaker cover, you can find the TF card slot and reset button of the camera. When you forget your password for the camera, you can press this reset button to reset it to be factory defaults.



## 02 View on Smart Phones

### 1. Download and Install the iCSee App

Scan the QR code below to download the "iCSee" app or search "iCSee" in App Store or Google Play to download it. When you install it, please allow all the authorizations if you want full functions and alarm pushes anytime.

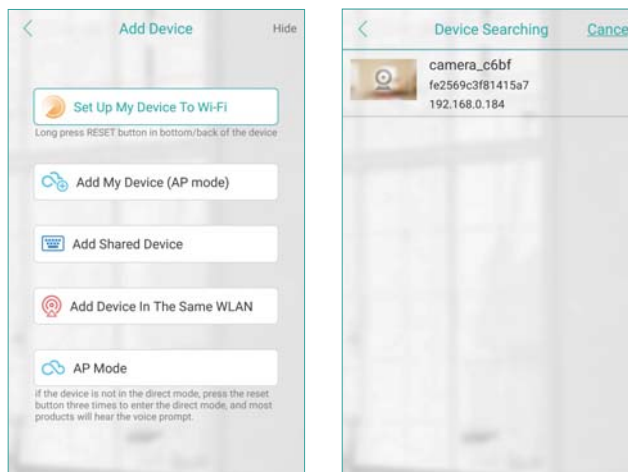


## 2. Add the PoE camera to the iCSee App.

After installing the app on your smart phones, you can register an account in it and start adding your PoE camera in it.

Before adding, please ensure your smart phone connected to the WiFi of the same router as the PoE camera.


Click the "+" in the right above corner, then click "More" and choose "Add device in the same WLAN", then there will be a list of the cameras in the same WLAN. Choose the camera you want to add.

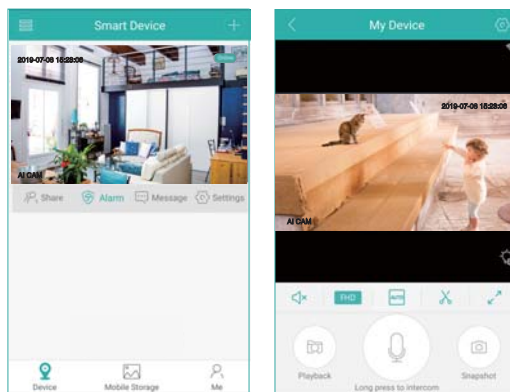


## 3. Using the App

After the camera is added into the app, follow steps below to do settings and control it.

## Control the camera

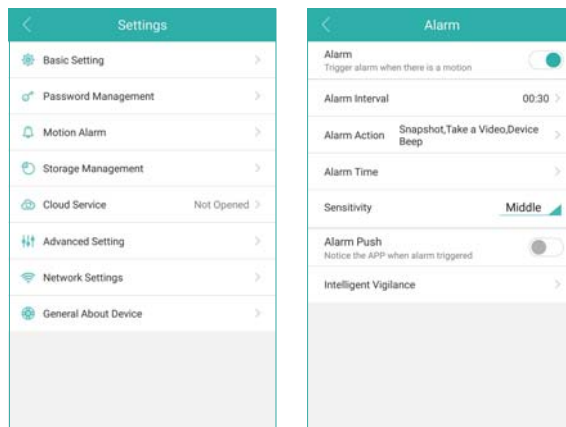
Click the video image of the camera and then you can do snapshot, two way intercom and playback the video recorded on the TF card. Click  to record video clips, it will count the seconds of the recorded video clips that you've recorded on your mobile phone.



You can find the picture snapshot and the video clips you made on your phone "Mobile Storage"

## Settings

In the settings, you can do basic setting, like name the device, language and so on. You can change the password, do alarm settings, open or close the alarm push, check storage and network settings.

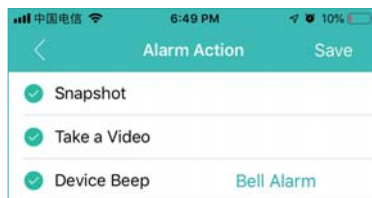





## 4. Unique features

### Alarm Voice Alert

In the motion alarm, check the alarm action. You can set what the camera does after alarms. It can snapshot , take a video and at the same time it will beep or play voice prompt. You can click "Bell Alarm" to choose what prompt voice it will play after alarms. You can choose "Alert area, please leave" ,"Hello, welcome ! " or" Howling Alarm" . As default this function is closed. Please do remember save it after changes made.



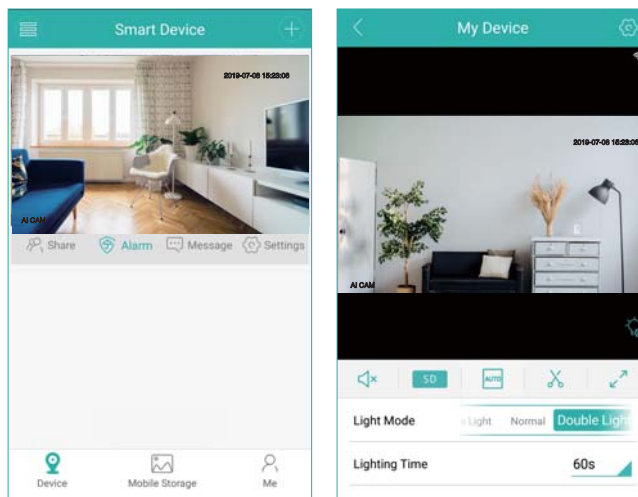
### Flood Light

On the live video, click the  icon. It will show the IR light settings for the camera. There are two types of lights in the camera, IR light and white light, and they have three modes.

White Light Mode: The white light will be on all the time in the night.

Normal: Only IR light will be on in the night. And the white light will be off day and night.

Double Light Mode: The IR light will be on in the night and the white light will be turned on in the night after human detection. (It is the default mode of the camera.)



## AI Smart Features

In the Motion Alarm, you can find the "Intelligent Vigilance". There are AI functions, like "Humanoid Detection" "Show Traces" and "Perimeter Alert".

### ◆ Humanoid Detection

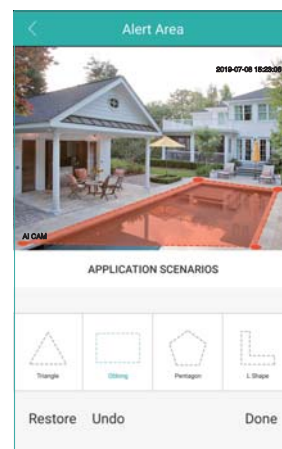
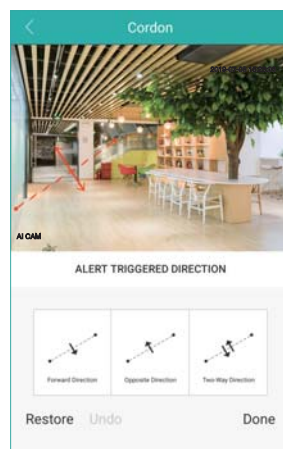
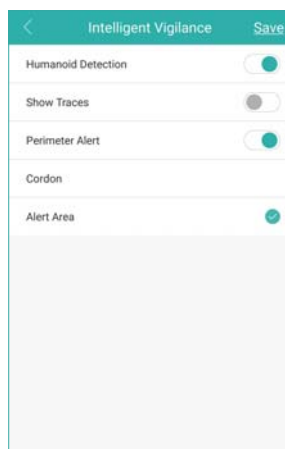
Humanoid Detection is a smarter way to detect human motion with AI tech. It is much more accurate than motion sensor and common motion detection and with no false alarm because of pets or swinging branches of trees.

### ◆ Show Traces

When this function is on, there will be a trace frame, when people are in the live video and it will follow the people when they are moving.

### ◆ Perimeter Alert

There are two settings for the perimeter alert. One is cordon, the other is alert area. For the cordon, you can put a cordon in the video image and when people cross it, it will alarm. You can set different alert directions for the cordon. Another setting for perimeter alert is alert area. You can draw different alert areas that you want to protect in the live video image.

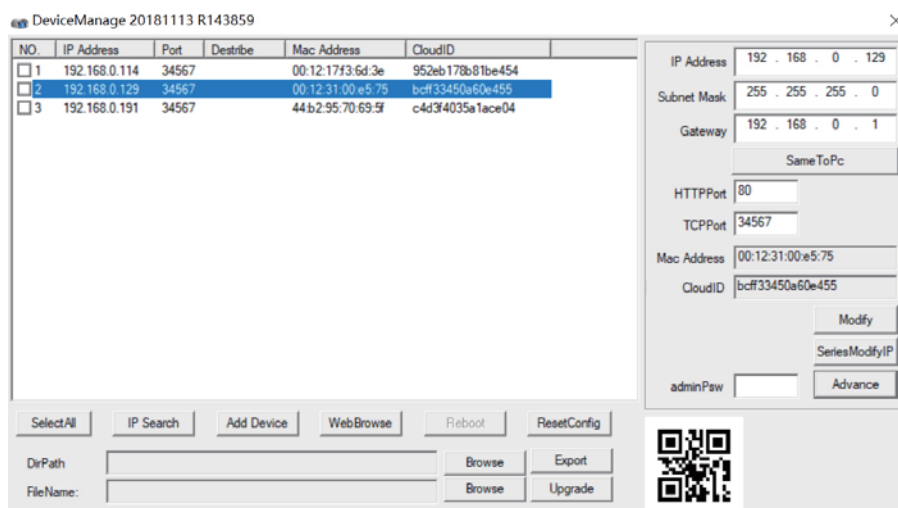


### 03 View on PC via IE

Download the DeviceManage software from <http://techage.com/download.php> and install it.

Please ensure your IP camera and your PC is in the same LAN, open the device manage software to search out your IP camera, click it and then click WebBrowse, it will open in the browser. And please allow the activeX control. If you can not install the activeX control, please search "How to install the activeX control?" on our website.

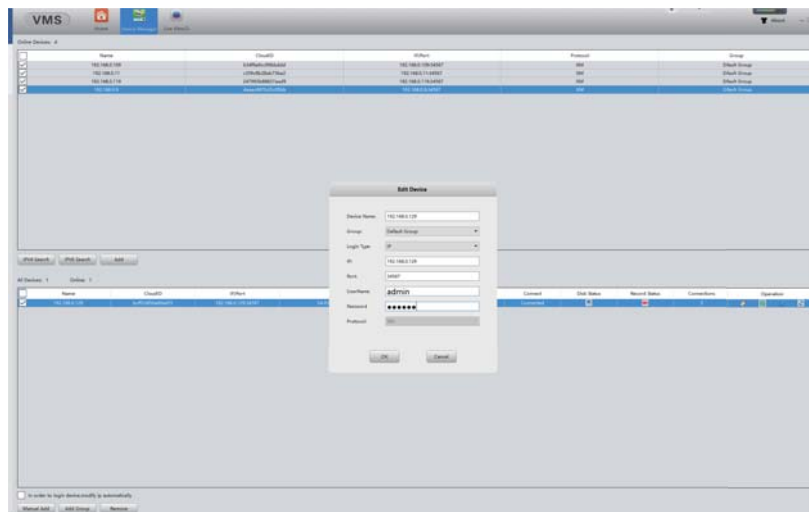
<http://www.techage.com/knowledge.php>



### 04 View on PC Software

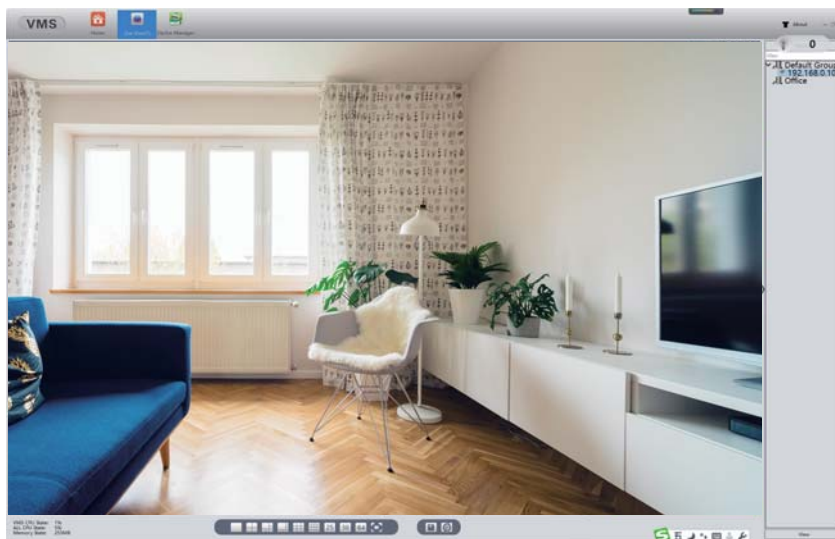
Step 1: Download VMS software from <http://techage.com/download.php> After opening the VMS software, click on Login directly. Do not need to input password, as default none password, just leave it blank.

Step 2: Choose Device Manager>IP4 search, then find your NVR and choose it. Click "Add"



After that click the  to edit the device, and update the password if you've already changed the password of the device.

And then back to Home page and click "Live View", double click your device IP and you can view your device in the VMS.



PoE AI camera

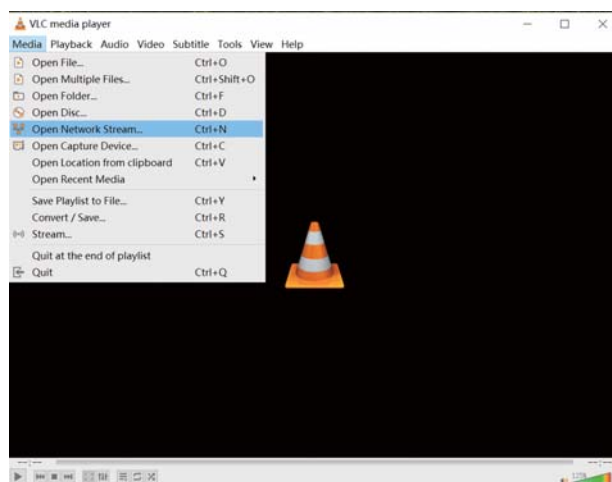


## View on Third Part Video Software

This PoE Camera is of ONVIF protocol and support RTSP monitoring. It is compatible with some popular third part video monitoring software, which mainly is using RTSP and works with Onvif protocol. Here below are some of the popular ones.

### 1.View on VLC

Open your VLC media player. Click "Media">>"Open Network Stream" Then enter the RTSP network URL of the camera in the WLAN.



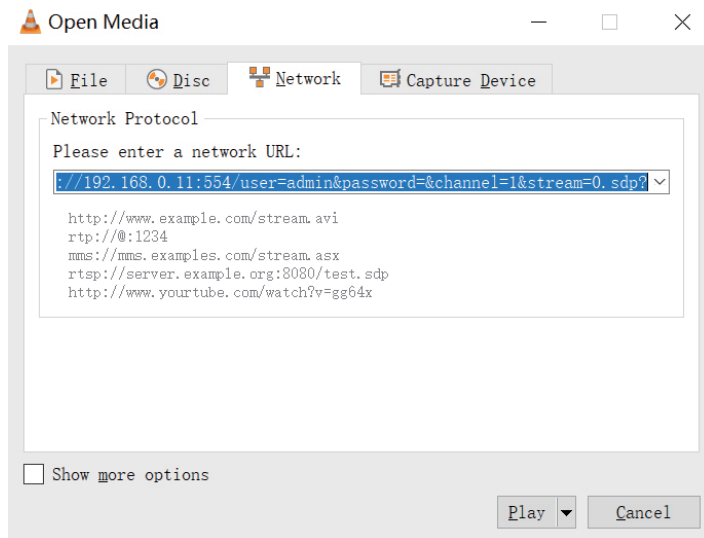
RTSP Data as below:

rtsp://192.168.0.109:554/user=admin&password=&channel=1&stream=0.sdp?

"192.168.0.109": This is the IP of the camera, you can find and modify it in the "DeviceManage" software.(Download it in on our website : <http://techage.com/download.php>)

"user=admin" : This is the user name for your camera, as default it is "admin"

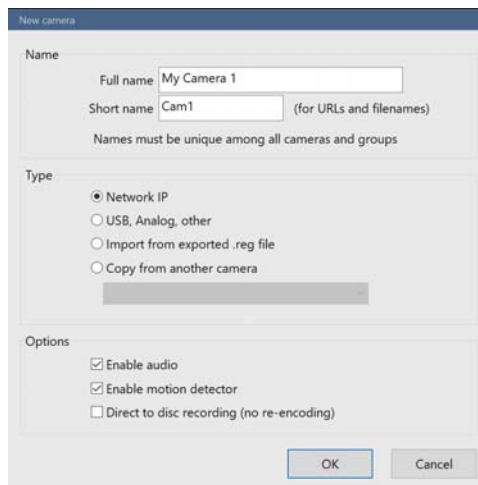
"password=": This is the password for your camera, as default it is none. If you changed it, please update it.



## 2. View on Blue Iris

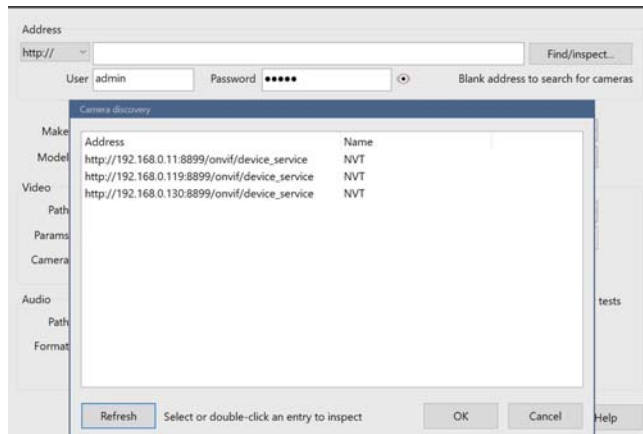
2.1 Open your Blue Iris 5 software, Click menu >> "Add new camera"

Then you follow picture below and "Enable audio" if your camera is with audio

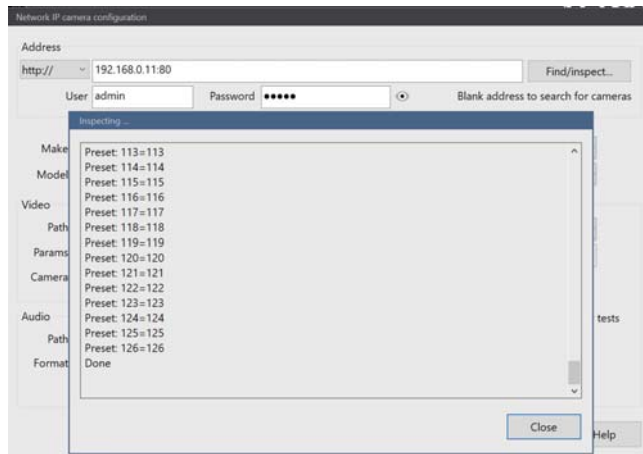


PoE AI camera

2.2 Click "Find/inspect" and choose the IP or the IP Camera you want to add . Click"OK".



2.3 Click "Close ", then Click "OK" to add the camera.

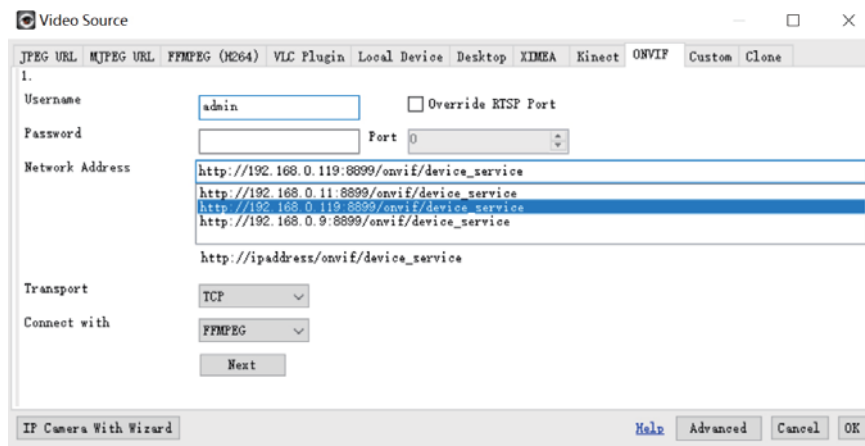


### 3. View on iSpy

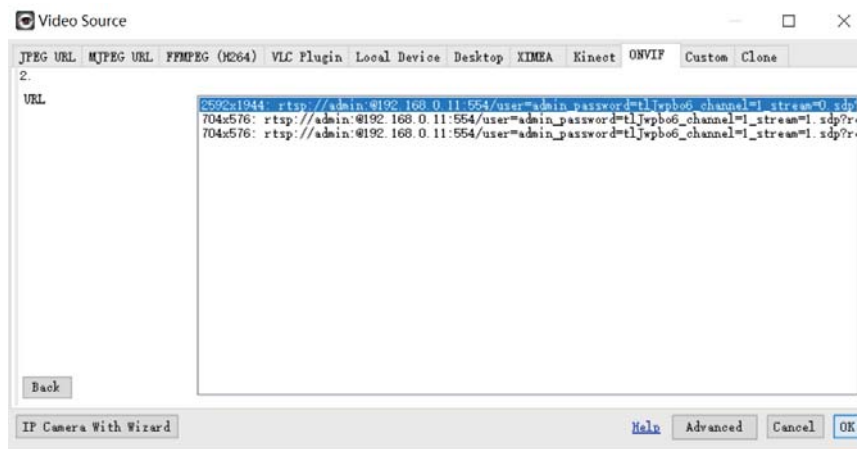
3.1 Open your iSpy software, click "Add" and choose the "ONVIF Camera"

Input your camera "Username" and "Password", select the IP address of your camera, click "Next"

PoE AI camera

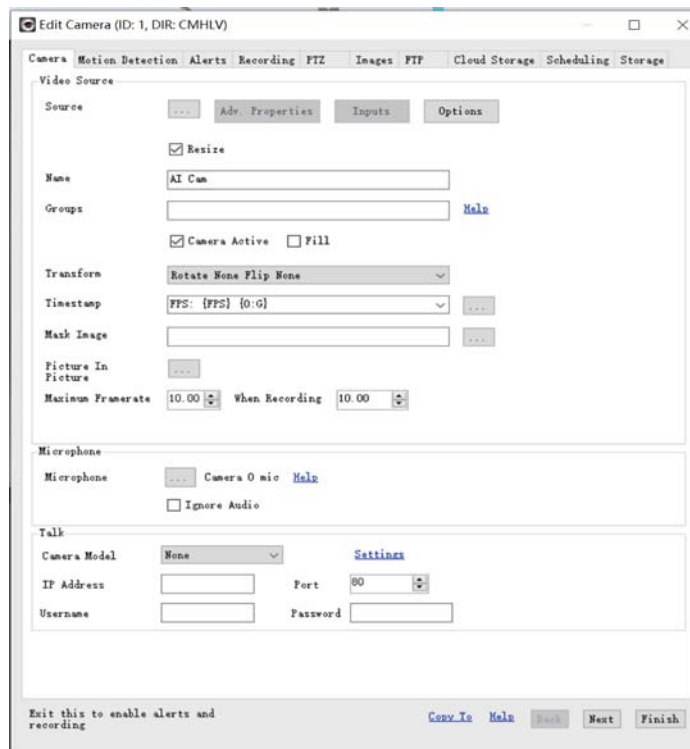


3.2 Then Choose your camera RTSP(Main Stream), then Click "OK"



3.3 Then you go to Camera option and you can name the IP Camera, input your camera IP address, User name and Password, click "Finish" to finish the add. If you have an audio camera, please click the "listen" icon to start listening.





This PoE AI Camera has some features and settings which not listed in the manual. You can reach our website to learn more about it.

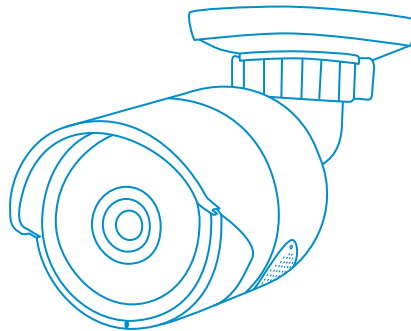
### Note

[illegible]

[illegible]

All rights reserved. No part of this publication may be reproduced by any means without written permission from Techage. The information in this publication is believed to be accurate in all respects.

Techage cannot assume responsibility for any consequences resulting from the use thereof. The information contained herein is subject to change without notice. Revisions or new editions to this publication may be issued to incorporate such changes.



[www.techage.com](http://www.techage.com)  
[support@techage.com](mailto:support@techage.com)

