



USER MANUAL

LG TONE Free

Bluetooth® LG Stereo Headset

NOTE: For the proper performance and to prevent any damage to, or misuse of the headset, please read all of the information carefully prior to using the headset.

Any modifications or changes to this manual due to typographical errors or inaccuracies of stated information shall only be made by LG Electronics Inc.



Google Play



App Store

HBS-FN7

www.lg.com

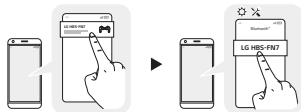
Copyright © 2020 - 2021 LG Electronics Inc. All rights reserved

Pairing and Connecting

Fast Pair



- 1 Turn on the *Bluetooth* function on the mobile phone or the device to be connected.
- 2 Open the cover of the charging case with the earbuds mounted on the case. Press the pairing button for 3 to 5 seconds until the blue battery status lamp blinks.



- 3 When the Fast Pair connection pop-up appears on the top area of the mobile phone screen, tap it to connect. (It only supports Android™ 6.0 or higher, and requires configuring *Bluetooth* and location information settings of the mobile device.)
- 4 If the pop-up does not appear, select **[LG HBS-FN7]** from the *Bluetooth* menu on the mobile phone and connect it (for users of iOS or Android 5.0 or lower versions).

NOTE: To connect with another device, perform the above procedure again.

CAUTION: In the list of *Bluetooth* connected devices, LG HBS-FN7_LE is not the correct model name for connection. Check the model name in use and connect with the model name without "LE".

The LG TONE Free (HBS-FN7) is a lightweight wireless headset that uses *Bluetooth* technology. This product can be used as an audio accessory for devices supporting either the A2DP or Hands-Free *Bluetooth* Profile.

Safety Precautions

The following safety precautions are provided to prevent any unexpected accident or damage. Please familiarize yourself with the safety precautions. The safety precautions are classified into "WARNING" and "CAUTION".

WARNING: Failing to comply with the instructions may result in serious injury or death.
CAUTION: Failing to comply with the instructions may result in minor injury or product damage.

WARNING

- Do not drop the product from a high place.
- Make sure there is no water, alcohol, or benzene in contact with the product.
- Do not store the product in a wet or dusty place.
- Do not place heavy objects on the product.
- This product is Splash proof to the IPX4 level protected against splashing of water. (The IPX4 Splash proof rating applies to the earbud product only.)
- Do not put the product under the water or use it in a humid location such as a bathroom.

CAUTION

- Choking Hazard: This product contains small parts that may present a choking hazard. Keep out of reach of children.
- Do not disassemble, adjust, or repair the product arbitrarily.
- Do not place the product near excessive heat or flammable material.

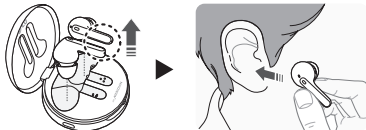
Automatic Reconnection

The earbuds are connected automatically when you open the cover of the charging case. If you close the cover of the charging case with both earbuds mounted in the charging case, the earbuds are disconnected.

Wearing Earbuds

- 1 Separate the earbuds from the charging case and adjust them so that they fit comfortably in your ears.

NOTE: You can easily separate the earbuds from the charging case by turning the part with dotted line in the image below to left or right and lifting the earbuds.



- 2 When you wear the earbuds, you will hear a wearing detection alarm.



The product may be damaged if an incompatible charger is used.

Make sure that foreign objects do not enter the charger's connectors (charging port and power plug). Failure to do so may result in fire or electric shock.

If you have a medical device implanted, contact your doctor before using this device.

This product has a built-in battery, and the battery cannot be removed or replaced arbitrarily.

For your safety, do not remove the battery incorporated in the product.

If you arbitrarily replace the battery or don't replace it correctly, it may explode.

The lithium-ion battery is a hazardous component that can cause injury.

Battery replacement by an unqualified professional can cause damage to your device.

Do not discard the battery arbitrarily. Follow the local procedure for discarding batteries.

Disposal of a battery into fire or a hot oven, or mechanically crushing or cutting of a battery, that can result in an explosion.

A battery subjected to extremely low air pressure that may result in an explosion or the leakage of flammable liquid or gas.

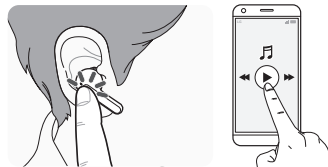
NOTE

- If the product is exposed to excessive sweat, clean the product.
- Keep the earbuds clean.

HD Speaker

If the communication network of the device you are connecting to supports HD Voice Calling, you can enjoy making voice calls and listening to music in high definition.

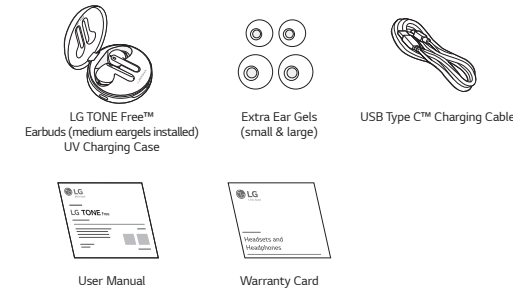
Playing Music



Function	Description
Play / Pause	: Touch the left or right earbud once.
Adjusting the Volume	: Touch the left(Decrease volume) or right(Increase volume) earbud twice.
Play Next	: Touch the left or right earbud three times.

NOTE: You can change the operation method of the function in the touchpad settings of the LG TONE Free app.

Product Components

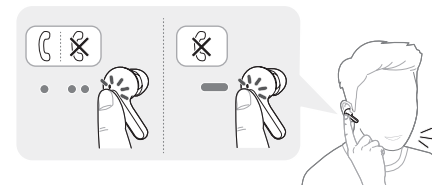


NOTE: Actual product design may differ from images shown in manual.

CAUTION

Make sure authentic LG Electronics components are used. Using a non-authentic component may damage the product and thus void the warranty. Use the USB Type C™ cable provided with the product.

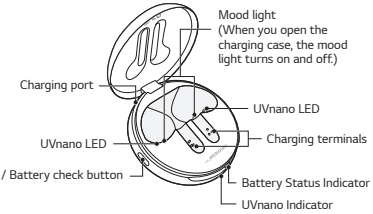
Mobile Calling Functions



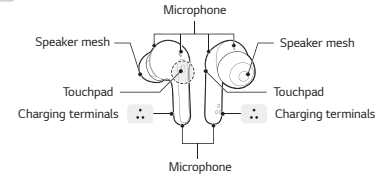
Function	Status	Description
Answering Calls	Ringing	Touch the left or right earbud once.
Ending Calls	Talking	Touch the left or right earbud twice.
Making Calls	Idle	If you make a call using a mobile phone, the call is automatically connected to the headset.
Receiving Calls while on the Phone	Talking	If you touch the left or right earbud once, the current call will go on hold, and you will be able to answer an incoming call. If the previous call is on hold, you can finish the current call on the mobile phone. (It works differently depending on the mobile phone settings.)
Rejecting Calls	Ringing	Touch and hold the left or right earbud.

Overview

Charging Case



Earbuds



*The appearance and specifications of the actual product may differ depending on the model.

Listen to the Ambient Sound (LAS) / Active Noise Cancellation (ANC)

Listen to the Ambient Sound (LAS)



The Listen to the Ambient Sound (LAS) function allows you to listen to the ambient sound so that you can recognize the surrounding situation and any potential risks.

Active Noise Cancellation (ANC)



The Active Noise Cancellation (ANC) function blocks most ambient sounds. So, you can use the function to listen to music or watch a video with minimal noise interference.

Touch and hold the left or right earbud to switch between the ANC mode and the LAS mode.

You can set the LAS and ANC functions in the LG TONE Free app.

If you use the LAS or ANC function, the battery consumes faster, reducing the time you can use the product.

You can use the LAS and ANC functions while being idle, listening to music, or being on the phone.

NOTE: ANC is an acronym for Active Noise Cancellation.

CAUTION: When the LAS mode is enabled, you may hear the ambient sound become loud suddenly.

When using the ANC function outdoors, pay attention to the surrounding environment for safety.

UVnano



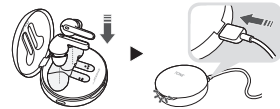
UVnano LED function only operates when the charging case is closed and connected to a power source using charging cable. UVnano LED does not operate while device is charging wirelessly such as on a pad or third party wireless charging device. Independent testing shows the UVnano charging case kills 99.9% of the tested bacteria* on the speaker mesh of the earbuds after 10 minutes while charging.

*Testing conducted by independent test using preproduction ear buds charged for 1 hour prior. Ear buds were floated and diluted in pre-cultured *Escherichia coli* and *Staphylococcus aureus* for 5 minutes, and dried to room temp for 30 mins. UV irradiation was carried out over 5, 10, 15 and 20 mins, with both bacteria not detected after 10 mins. - For best result, it is recommended that the full 10 minutes of UVnano LED operation be performed while charging.

NOTE: The UVnano indicator turns on blue while the UVnano LED is on. The light will slowly illuminate on and off until the UVnano LED function is complete (10 minutes). Once completed, the indicator light will switch back to the always-on battery indicator, see "Battery Status". Performance may vary based on usage conditions. A white product may slightly differ in the color of the UVnano LED contact area, but there is no problem with the product performance. **CAUTION:** Be aware that the temperature of the earbuds may rise while the UVnano LED is operating. Avoid direct eye and skin exposure to UV light. Keep out of reach of children.

Charging

Wired Charging



10

When the charging cable is connected, the charging status is displayed in the charging case. **NOTE:** The earbuds and the charging case are charged at the same time. The charging port on the charging case cannot be used to supply power to mobile phones, etc.

Wireless Charging



Align the bottom center of the charging case with the center of the wireless charger. **NOTE:** The wireless charger is not provided. The wireless charging function may not work in some wireless chargers. Wireless charging feature charges at a slower rate due to less power being transmitted to the charging case.

Checking the Battery Status

If earbuds are mounted in the charging case, the earbuds' battery status is displayed. Otherwise, the charging case's battery status is displayed. If the earbuds are mounted in the charging case while plugged in, the UVnano process will commence for ten minutes. Once this process is complete, the charging case's battery status will be displayed.



Battery Status Indicator	Remaining Battery (charger not connected)	Charging State (charger connected)
Red	20% or lower	Charging
Yellow	20% - 80%	-
Green	80% or higher	Fully charged

NOTE: When the charging case lid is closed, charging case battery status is displayed. If the charging case has no remaining charge, there will be no display and it cannot function. We recommend you keep the charging case charged at all times as the earbuds are not able to be turned on and turned off independently.

11

Declaration of Confirmation

FCC NOTICE TO USERS:

This device complies with part 15 of the FCC rules. Operation is subject to the following two conditions:

- (1) This device may not cause harmful interference, and
- (2) This device must accept any interference received, including interference that may cause undesired operation.

Changes or modifications not expressly approved by the manufacturer (or party responsible) for compliance could void the user's authority to operate the equipment.

FCC Part 15.105 statement

This equipment has been tested and found to comply with the limits for a Class B digital device, pursuant to Part 15 of the FCC Rules.

These limits are designed to provide reasonable protection against harmful interference in a residential installation. This equipment generates, uses and can radiate radio frequency energy and, if not installed and used in accordance with the instructions, may cause harmful interference to radio communications.

However, there is no guarantee that interference will not occur in a particular installation. If this equipment does cause harmful interference to radio or television reception, which can be determined by turning the equipment off and on, the user is encouraged to try to correct the interference by one or more of the following measures:

- Reorient or relocate the receiving antenna.
- Increase the separation between the equipment and receiver.
- Connect the equipment into an outlet on a circuit different from that to which the receiver is connected.
- Consult the dealer or an experienced radio/TV technician for help.

IMPORTANT NOTE:

To comply with the FCC RF exposure compliance requirements, no change to the antenna or the device is permitted. Any change to the antenna or the device could result in the device exceeding the RF exposure requirements and void user's authority to operate the device.

DECLARATION OF CONFORMITY:

Hereby, LG Electronics declares that the radio equipment type this headset is in compliance with Directive 2014/53/EU. The full text of the EU declaration of conformity is available at <http://www.lg.com/global/declaration>

Bluetooth® is a registered trademark of Bluetooth SIG, Inc. worldwide. Android, Google Play, the Google Play logo, and other related marks and logos are trademarks of Google LLC. Apple iOS and App Store is a trademark of Apple Inc.



Additional Information

1. Radio frequency exposure

This *Bluetooth* LG Stereo Headset is a radio transmitter and receiver. When in operation, it communicates with a *Bluetooth* equipped mobile device by receiving and transmitting radio frequency (RF) electromagnetic fields (microwaves) in the frequency range 2402 to 2480 MHz.

Battery Status Indicator

Status	Description
<i>Bluetooth</i> Search Mode	The battery status indicator flashes in blue.
Battery below 20%	The battery status indicator turns on and off in red.
Battery 20% - 80%	The battery status indicator turns on and off in yellow.
Battery 80% or more	The battery status indicator turns on and off in green.
When there is a problem while charging	The battery status indicator flashes in red.
Charging (charger connected)	The battery status indicator turns on in red.
Charging complete (charger connected)	The battery status indicator turns on in green.

Out of Range

If the device connected to the product is out of effective communication range, the communication signal becomes weak and the communication is lost. The effective communication range may vary depending on surrounding and other conditions.

If the device comes back within effective communication range, the product automatically reconnects to the device. If the device is not automatically reconnected, **touch the left or right earbud** once to connect them.

LG TONE Free App

If you install the "LG TONE Free" app, you can use Check Earbud Battery, Voice Alert, Change Equalizer Mode, Check Last Connected Location Information, and Find My Earbuds functions. Check out the app for more details.

To install the "LG TONE Free" app, search LG TONE Free in the Google Play Store or App Store or scan the QR code below. It supports Android 5.0 or higher and iOS 11 or higher.



Google Play



App Store

Troubleshooting

If you see any of the following symptoms while using the product, make sure to recheck it. It may not be a malfunction.

Symptom	Cause and Solution
The power does not turn on	Check the battery level and charge it.
If unable to make a call with earbuds	If the mobile phone does not support headset and hands-free functions, you cannot use the calling features. Check the battery level and charge it.
If unable to register earbuds to mobile phone	Check whether earbuds are turned on. Check if the charging case of earbuds are in search mode. - Press the pairing button on the charging case to switch to search mode.
If you replaced the earbuds or there is a problem with the operation	Put the earbuds in the charging case and, with the case open, press the pairing button for 10 seconds or more. - The factory reset proceeds while the battery status indicator on the charging case flashes red. Please reconnect the device after factory reset.

13



Disposal of waste batteries/accumulators

- 1 This symbol may be combined with chemical symbols for mercury (Hg), cadmium (Cd) or lead (Pb) if the battery contains more than 0.0005% of mercury, 0.002% of cadmium or 0.004% of lead.
- 2 All batteries/accumulators should be disposed separately from the municipal waste stream via designated collection facilities appointed by the government or the local authorities.
- 3 The correct disposal of your old batteries/accumulators will help to prevent potential negative consequences for the environment, animal and human health.
- 4 For more detailed information about disposal of your old batteries/accumulators, please contact your local council, waste disposal service or the shop where you purchased the product.

Important Safety Information

Avoiding hearing damage

Permanent hearing loss may occur if you use your headset at a high volume. Set the volume to a safe level. You can adapt over time to a higher volume of sound that may sound normal but can be damaging to your hearing.

If you experience ringing in your ears or muffled speech, stop listening and have your hearing checked. The louder the volume, the less time is required before your hearing could be affected. Hearing experts suggest that to protect your hearing:

- Limit the amount of time you use Headset at high volume.
- Avoid turning up the volume to block out noisy surroundings.
- Turn the volume down if you can't hear people speaking near you.



Please refer to your handset user guide for more information on how to adjust listening levels on your handset.

18

Specifications and Features

Item	Comments
<i>Bluetooth</i> Specifications	V 5.0 (Headset/Hands-Free/A2DP/AVRCP)
Battery	Earbud : 3.7 V / 55 mAh, Lithium-ion Charging case : 3.7 V / 390 mAh, Lithium-ion
Music Play Time Earbuds & With Charging case (ANC ON)	Up to 7 & Up to 21 hours (Up to 5 / Up to 15 hours)*
Charging Time	Earbud : within an hour / Charging case : within 2 hours Fast Charging : 5 min charge for up to 60 min playtime ※ When charging wired at room temperature
Rated Input Voltage	Earbud : DC 5 V, 110 mA Charging case : DC 5 V, 500 mA
Operating Temperature	0 °C (+32 °F) ~ +40 °C (+104 °F)
Dimensions (mm) / Weight (g)	Earbud : 16.2 mm (W) X 32.7 mm (L) X 26.8 mm (H) / 5.6 g (One earbud) Charging case : 54.5 mm (W) X 54.5 mm (L) X 27.6 mm (H) / 39 g
Frequency range	2402 MHz to 2480 MHz
Output power (Max.)	10 dBm

*Duration of use may vary depending on the connected mobile device, features being used, settings, signal strength, operating temperature, frequency band, and other methods of use. Fast charging feature does not apply when charging case is placed on wireless charging device such as a pad. Wireless charging feature charges at a slower rate due to less power being transmitted to the charging case.

14

Using headsets safely

Use of Headset to listen to music while operating a vehicle is not recommended and is illegal in some states and countries. Be careful and attentive while driving. Stop using this device if you find it disruptive or distracting and do not use this device while operating any type of vehicle or performing any other activity that requires your full attention.

Open Source Software Notice Information

To obtain the source code under GPL, LGPL, MPL, and other open source licenses, that is contained in this product, please visit <http://opensource.lge.com>.

In addition to the source code, all referred license terms, warranty disclaimers and copyright notices are available for download.

LG Electronics will also provide open source code to you on CD-ROM for a charge covering the cost of performing such distribution (such as the cost of media, shipping, and handling) upon email request to opensource@lge.com.

This offer is valid for a period of three years after our last shipment of this product.

This offer is valid to anyone in receipt of this information.

RISK GROUP 2	
	CAUTION : UV EMITTED FROM THIS PRODUCT. EYE OR SKIN IRRITATION MAY RESULT FROM EXPOSURE. USE APPROPRIATE SHIELDING.
	WARNING : WHEN OPENING THE CHARGING CASE OR WIRELESS CHARGING, THE UV FUNCTION DOES NOT WORK.

15

16

17

19