



# 6" SLOPE CEILING LED - 900 LUMENS IC NEW CONSTRUCTION HOUSING

Project: \_\_\_\_\_

Fixture Type: \_\_\_\_\_

Location: \_\_\_\_\_

Contact/Phone: \_\_\_\_\_

STANDARD SLOPE:

2/12 TO 6/12 PITCH (9° TO 27°)

**IC926LED (G4 09LM)  
LENSED TRIMS**



## PRODUCT DESCRIPTION

Dedicated LED, Air-Loc® sealed slope ceiling new construction housing with integral light engine • IC rated construction housing can be completely covered with insulation • Fully sealed housing stops infiltration and exfiltration of air, reducing heating and air cooling costs without the use of additional gaskets • LED housing is designed to provide 50,000 hours of life and is compatible with standard Juno trims • 5 year limited warranty on LED components.

## ENVIRONMENTALLY FRIENDLY, ENERGY EFFICIENT

- No harmful ultraviolet or infrared wavelengths
- No lead or mercury
- Comparable light output to 26W compact fluorescent

## PRODUCT SPECIFICATIONS

**LED Light Engine** Extruded heat sink and cast aluminum slider plate integrated directly with housing provides superior thermal management to ensure the long life of the LED • Replaceable light engine mounts directly to slider plate and incorporates the latest generation, high lumen output LED array • LEDs are binned within a 3-step MacAdam Ellipse • 2700K, 3000K or 3500K color temperatures available • 90 CRI minimum.

**Optical System** Computer-optimized internal reflector with specular finish coupled with a high transmission diffusing lens conceals the LEDs and produces uniform aperture luminance • Adjustable slider plate to position LEDs/reflector perpendicular to floor • Plate includes 1/4" adjustment indicators for consistent alignment.

**Aesthetic Trim Selections** Compatible with a selection of existing Juno trims • Trims are wet location approved for covered ceiling applications.

**LED Driver** Choice of dedicated 120 volt (120) driver or universal voltage (MVOLT) drivers that accommodate input voltages from 120-277 volts AC at 50-60Hz • Power factor > 0.9 at 120V input • 120 volt only driver dimmable with the use of most incandescent, magnetic low voltage and electronic low voltage wall box dimmers • Universal voltage drivers are dimmable with the use of most 0-10V wall dimmers • For a list of compatible dimmers, see [JUNOICLED-DIM](#) • Mounted inside housing on a removable J-box cover for ease of maintenance.

**Life** Rated for 50,000 hours at 70% lumen maintenance.

**Labels** UL listed for U.S. and Canada through-branch wiring, wet locations (covered ceilings) • Union made • UL and cUL listed.

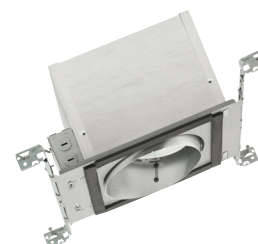
**Testing** All reports are based on published industry procedures; field performance may differ from laboratory performance.

Specifications subject to change without notice.

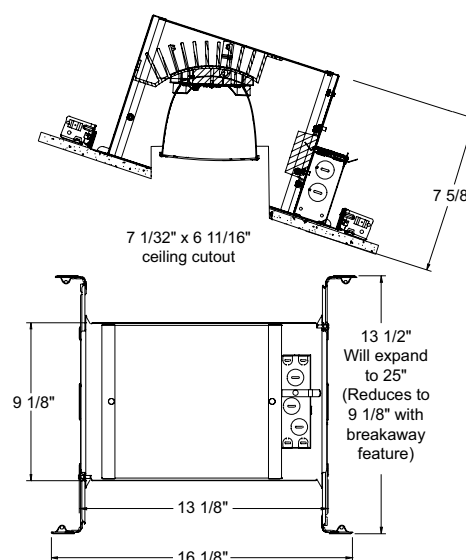
## HOUSING FEATURES

**Housing** Designed for use in IC (insulated ceiling) or non-IC construction • .032" aluminum housing sealed for Air-Loc compliance • Access door for junction box accessibility • Inner skirt is vertically adjustable to accommodate up to a 1" ceiling thickness.

**Junction Box** Pre-wired junction box provided with (5) 1/2" and (1) 3/4" knockouts, (4) non-metallic sheathed cable connectors and ground wire, UL and cUL listed for through-branch wiring, maximum 8 No. 12 AWG 90° C branch circuit conductors (4 in, 4 out) • Junction box provided with removable access plates • Knockouts equipped with pryout slots • Push-in electrical connectors supplied as standard for fast, secure installation.



## DIMENSIONS



**Mounting Frame** 22-gauge die-formed galvanized steel mounting frame • Rough-in section (junction box, mounting frame, housing and bar hangers) fully assembled for ease of installation.

**Real Nail® 3 Bar Hangers** Telescoping Real Nail® 3 system permits quick placement of housing anywhere within 24" O.C. joists or suspended ceilings • Includes removable nail for repositioning of fixture in wood joist construction • Integral T-bar mounting feature for suspended ceilings • Design covered under US Patent D552,969.

# 6" SLOPE CEILING LED - 900 LUMENS IC NEW CONSTRUCTION HOUSING

STANDARD SLOPE: 2/12 TO 6/12 PITCH (9° TO 27°)

## IC926LED (G4 09LM) LENSED TRIMS

### ELECTRICAL DATA

#### Dedicated 120V Only Driver Option (120 FRPC)

120V	
Input Power	15.7W (+/-5%)
Input Current - Max	0.13A
Frequency	50/60Hz
EMI/RFI	FCC Title 47 CFR, Part 15, Class B (residential)
Minimum starting temp	-25°C

### ELECTRICAL DATA

#### Universal Voltage

	MVOLT EZ10 and MVOLT EZ1		MVOLT ZT10 and MVOLT ZT1	
	120V	277V	120V	277V
Input Power	14.5W (+/-5%)	15.3W (+/-5%)	14.5W (+/-5%)	15.3W (+/-5%)
Input Current	0.12A	0.06A	0.12A	0.06A
Frequency	50/60Hz	50/60Hz	50/60Hz	50/60Hz
EMI/RFI	FCC Title 47 CFR, Part 15, Class B (residential)	FCC Title 47 CFR, Part 15, Class B (residential)	FCC Title 47 CFR, Part 15, Class B (residential)	FCC Title 47 CFR, Part 15, Class B (residential)
Minimum starting temp	-20°C	-20°C	-20°C	-20°C

### ORDERING INFORMATION

Housing and trim can be ordered together or separate, but will always ship separately.

Example: IC926LED G4 09LM 27K 90CRI 120 FRPC

Series	Generation	Lumens	Color Temperature	CRI	Voltage/Driver
IC926LED 6" LED Slope Ceiling New Construction IC Hsg	G4 Generation 4	09LM 900 Nominal Lumens	27K 2700K 30K 3000K 35K 3500K	90CRI 90+ CRI	120 FRPC 120V Forward/Reverse Phase Cut, 5% dim MVOLT ZT10 Multi-Volt (120-277), 0-10V, 10% dim MVOLT ZT1 Multi-Volt (120-277), 0-10V, 1% dim MVOLT EZ10 Multi-Volt (120-277), eidoLED 0-10V, 10% dim MVOLT EZ1 Multi-Volt (120-277), eidoLED 0-10V, 1% dim



A+ Capable options indicated by this color background

### Trim/Description


**6330 BWH**  
**6330 WWH**

 6" Lensed Baffle with Regressed Frosted Dome Lens Trim - Black Baffle, White Trim Ring  
 6" Lensed Baffle with Regressed Frosted Dome Lens Trim - White Baffle, White Trim Ring

UL Listed for use in wet location.

Trim Size: 7 5/8" O.D.

Note: In Canada when insulation is present, Type IC fixtures must be used.

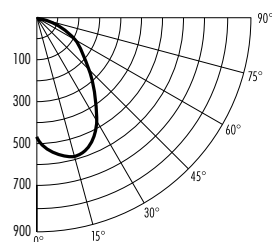
### PHOTOMETRIC REPORT

Test Report #: PTO6120505R

Catalog No: IC926LED G4 09LM 35K 90CRI  
120 with 6330 WWH Trim

Luminaire Spacing Criterion: 1.36

Luminaire LPW: 49



### CANDLEPOWER DISTRIBUTION (Candelas)

Degrees Vertical	0°
0	488
5	550
10	584
15	599
20	586
25	546
30	485
35	419
40	338
45	266
50	205
55	154
60	115
65	85
70	60
75	40
80	23
85	8
90	0

### AVERAGE INITIAL FOOTCANDLES

Multiple Units (Square Array, 60' x 60' room)

Spacing	RCR1	RCR3	RCR5
4.0'	51	41	33
5.0'	32	26	21
6.0'	23	18	15
7.0'	18	15	12
8.0'	14	12	10
9.0'	11	9	7
10.0'	8	7	5

### ZONAL LUMEN SUMMARY

Zone	Lumens	%Lamp	%Fixture
0 - 30°	312	N/A	40.8
0 - 40°	458	N/A	59.8
0 - 60°	665	N/A	86.8
0 - 90°	765	N/A	100.0

### INITIAL FOOTCANDLES (One Unit, 15.5W, 55.6° Beam)

Distance to Illuminated Plane (Feet)	Footcandles Beam Center	Beam Diameter
4	37.4	4.2'
6	16.6	6.3'
8	9.4	8.4'
10	6.0	10.5'

### LUMINANCE (Average cd/m²)

Degrees	Average Luminance
45	24592
55	17480
65	13159
75	9987
85	6291