

# Matter Setup Instructions

## How to Set Up MixPad D1 to Join a Third-Party Matter Hub

\*This instruction is not intended for public or commercial use.



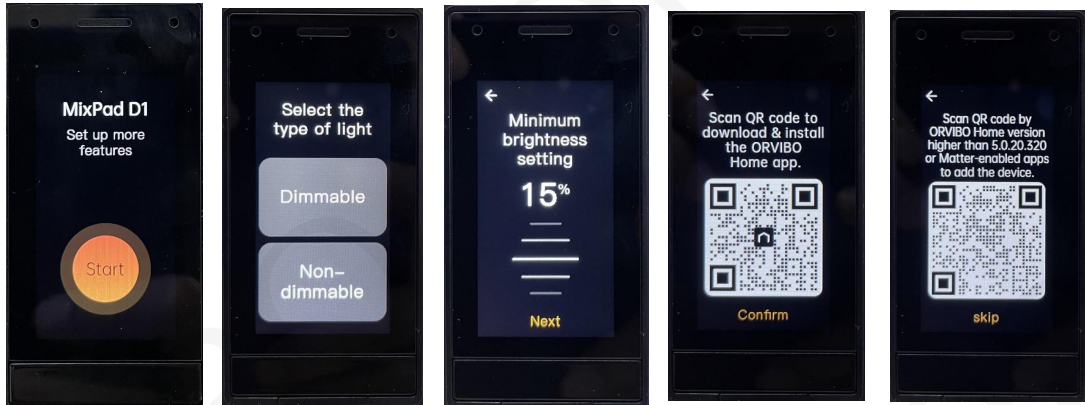
### Preparation and Notes:

- First, prepare a hub that supports Matter protocol, such as speakers of Alexa/Google/Apple (Please refer to the FAQ for the specific list) , and add it to its specific App.
- MixPad D1 and the hub should be in the same LAN (local area network).
- The WiFi router should support or have IPv6 enabled.
- After you've joined a Matter controller, then if you want to change the light bulb type from "Dimmable" to "Non-Dimmable", or on the contrary, you need to reset or delete MixPad D1 from the present Matter hub and rejoin to show the right UI of the light bulb on the App.

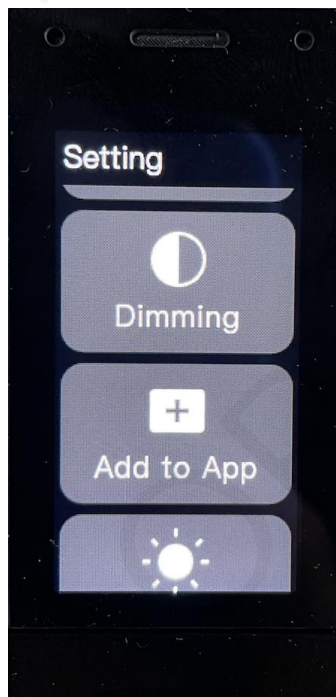
### 1. How to get the "Add to App" Matter QR code on MixPad D1 switch?

- For new or reset devices, the QR code will be displayed during the new device setup process, as shown below:

"Start" - "Select the Type of Light" - "Minimum Brightness Setting" - "Download and Install ORVIBO Home App" - "QR Code for Adding Matter/ORVIBO App"



- If the device skipped the setup process or has already joined the ORVIBO Home app: Navigate to the "Settings" page of MixPad D1 and tap on "Add to App".



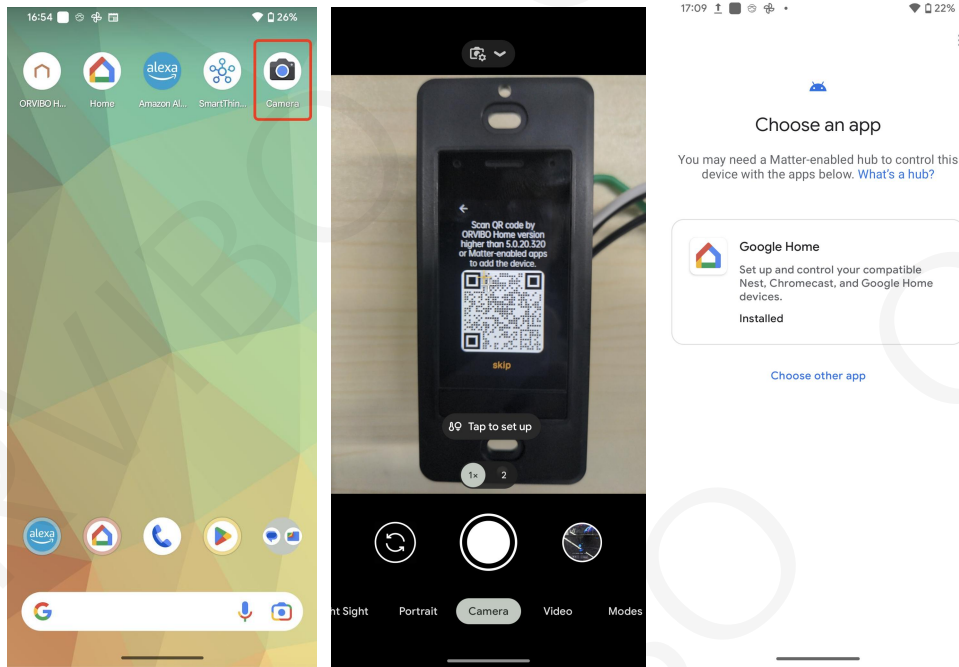
## 2. Using a Different Matter Supported App to Add MixPad D1 switch.

\*Different app versions may have slight differences in the interface and steps mentioned below.

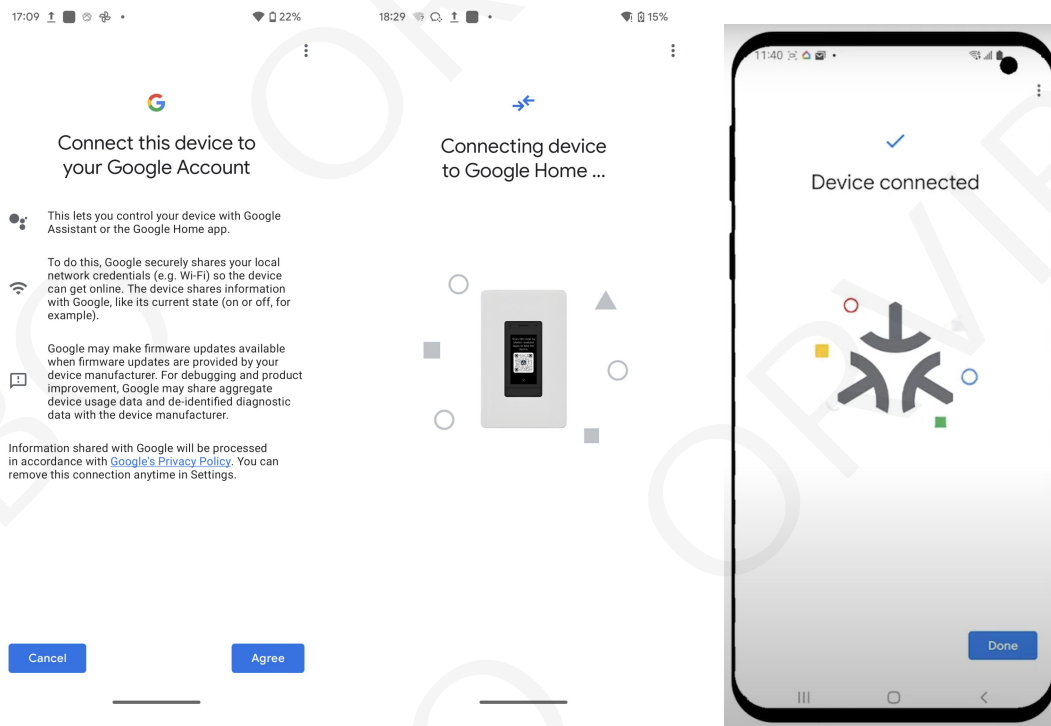
### Using the Google Home App

- Open the camera app on your Android device.

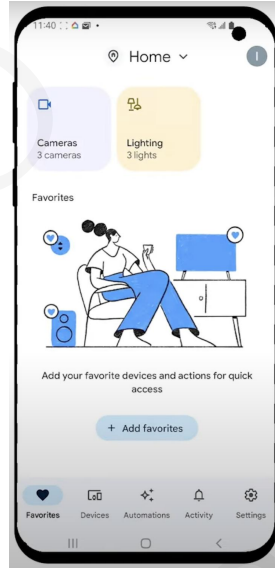
- Scan the Matter QR Code and tap "Continue", then "Add".
- Tap on "Google Home" in the list of apps.



- Tap "I Agree" to add the product and then wait for the device to connect. Once the device is added, tap "Done".

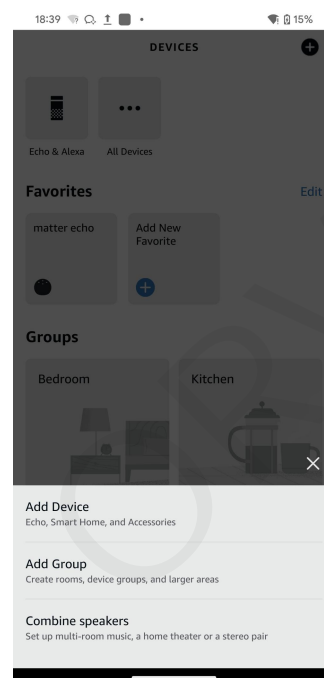
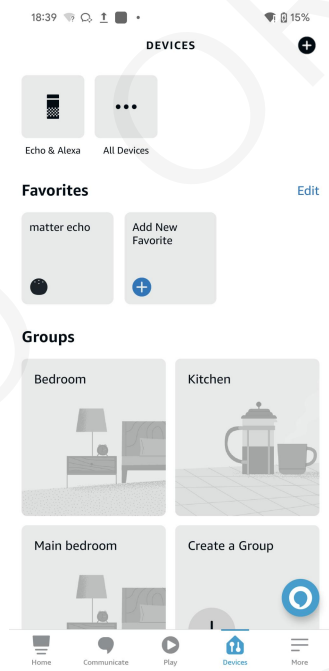


- Choose a location for the device, then tap "Next".
- Give the device a name and tap "Next".
- Your Matter-enabled device has been successfully added.

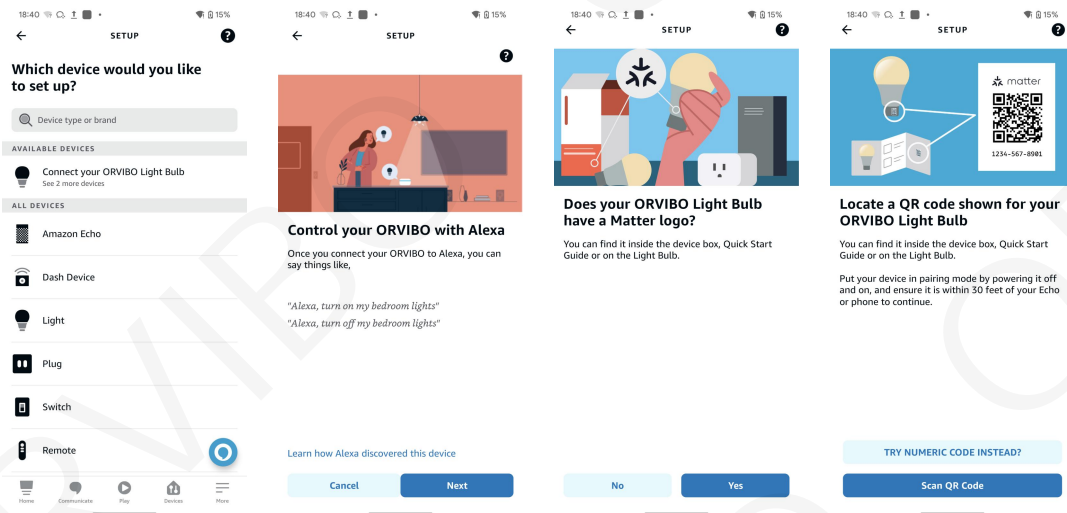


## Using the Alexa App

- Open the Alexa App, and tap on "Devices"
- Tap the "+" and select "Add Device".



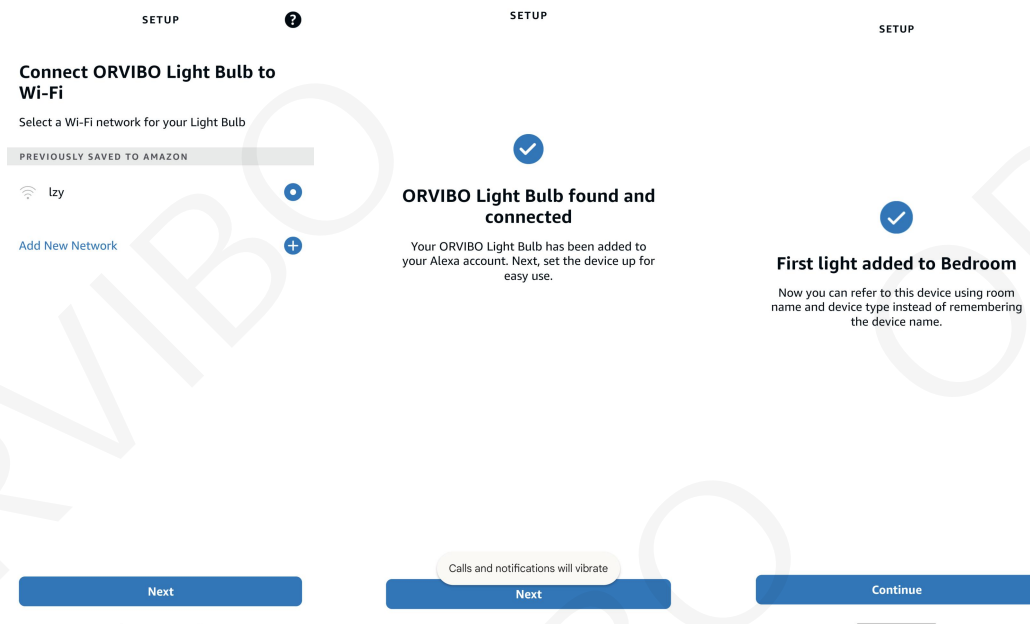
- Tap "Connect your ORVIBO Light Bulb", then tap "Next" and "Yes" to "Scan QR Code"



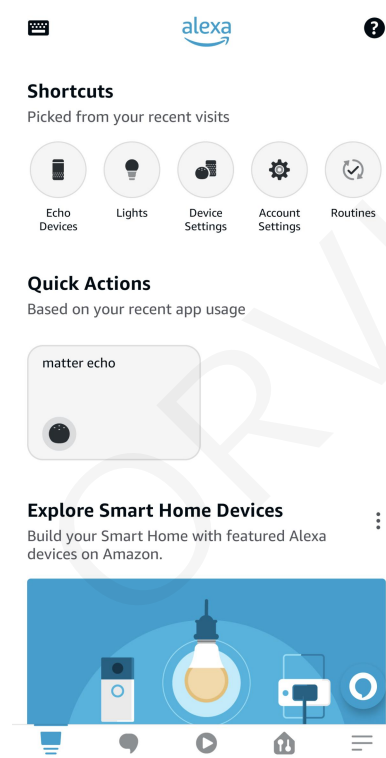
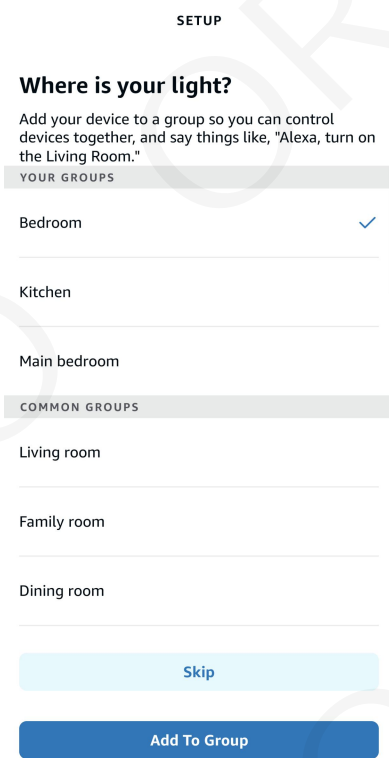
- Scan Matter QR Code on MixPad D1 switch.



- Select your network, then tap "Next" and wait for it to connect the network. Once the connection is established, the setup process is complete.



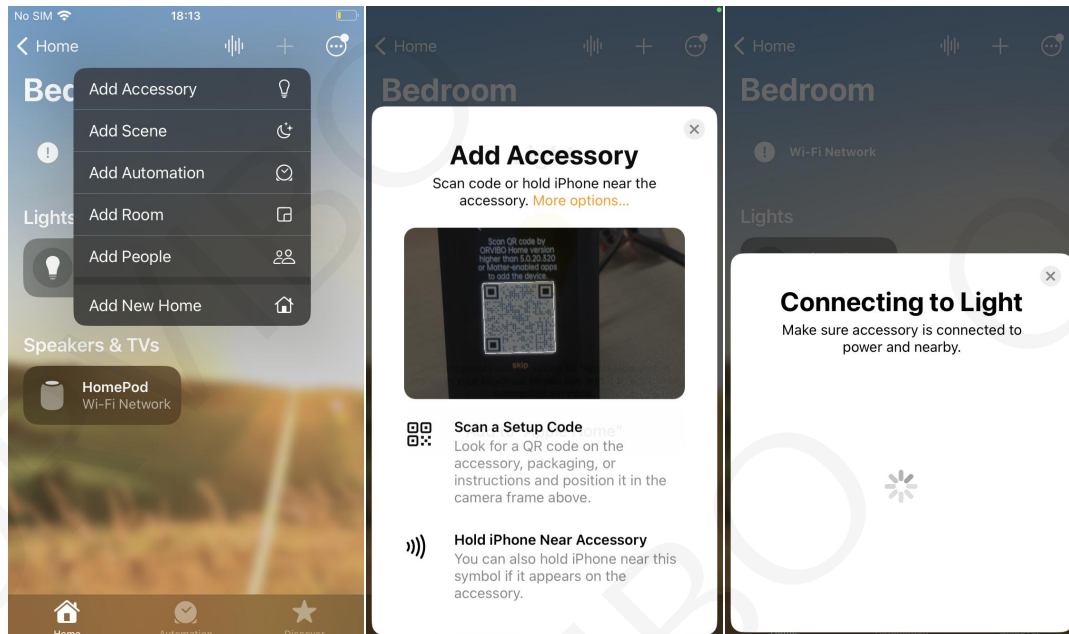
- Select your groups, tap "Add To Group" and done.



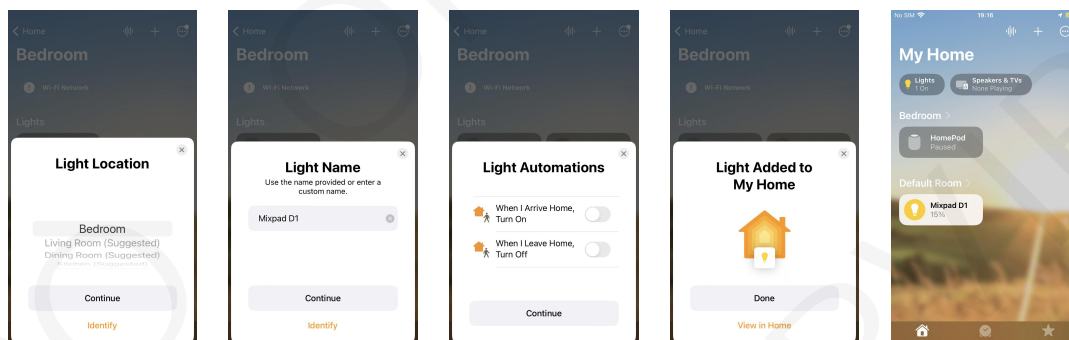


## Using Apple Home App

- Open the Home app and tap "+" to "Add Accessory".
- Scan the Matter QR Code, then wait for the device to connect to the Home app.



- Choose a location then tap "Continue", and then enter a name, tap "Continue".  
The setup process is now complete.



## 3. Adding MixPad D1 to the ORVIBO Home App (Currently, it does not support adding other Matter-compatible brands' products to this app):

Please refer to the instruction manual specific to the Orvibo MixPad D1 for guidance.