



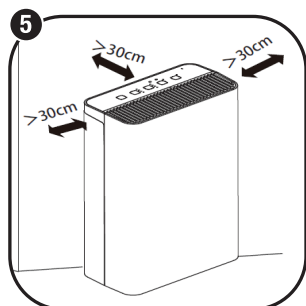
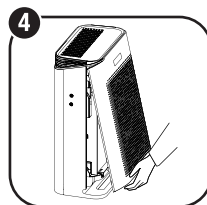
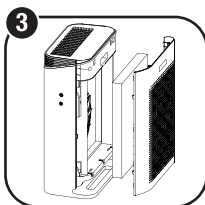
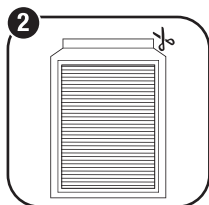
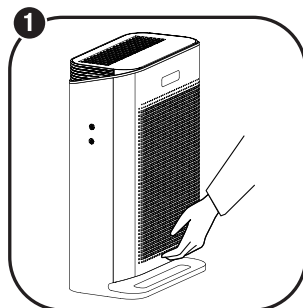
Let's get your new air purifier ready to use!

This quick start guide contains basic instructions to get you started. For the full picture, please refer to the supplied manual which has comprehensive usage instructions and important safety advice.

## A Installing the filters

Before using the appliance, **you MUST remove all packaging materials from the 3-in-1 filter set**, which is fitted inside the appliance in its original wrapping. If you fail to do so, the appliance will be very noisy and will not function properly.

- 1 Remove the rear cover of the appliance pulling the bottom handle.
- 2 Take the packaged filtration system out of the appliance, and remove its plastic packaging.
- 3 Reinstall the unpacked filtration system into the appliance with the small handle facing outward.
- 4 Reinstall the rear cover. Make sure it clicks in securely.



## B Placement and connection

Place the air purifier on a dry, stable, horizontal and level surface.

**Do not use the appliance in an environment where oil is used or smoke is generated, such as in a kitchen!**

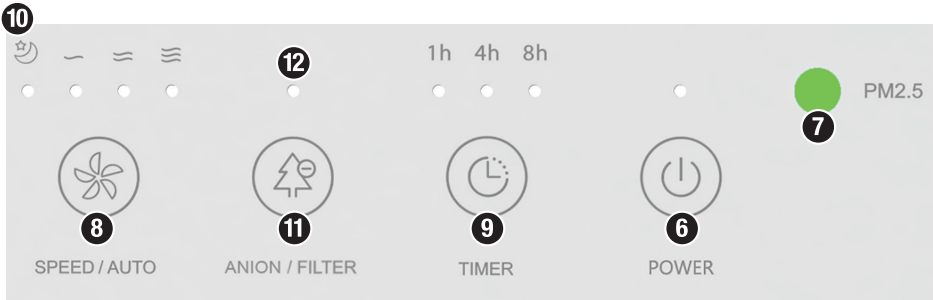
For a better air purification effect, make sure to maintain a clearance of at least 30 cm from walls or furniture and at least 50 cm from electrical appliances.

Plug the appliance into a suitable electrical wall outlet and switch on the power to the outlet.

Your air purifier is now all set up and ready for use.

Turn over the page for usage instructions ...

## Control panel

**C**

## D Using the air purifier

Now that you have set up your air purifier, follow the simple steps below and enjoy clean, pure air in your home.

Press the POWER button to turn on the unit. After a brief period, the air quality (PM2.5) indicator will come on, displaying the current state of your indoor air.

The PM2.5 indicator illuminates **green** when the air quality is good, **orange** when it is average and **red** when it is poor.

Press the SPEED / AUTO button to choose your fan speed options: auto, low, med, high, night.

The unit will automatically start in auto mode. The three speed indicator lights will be illuminated. When using this mode, you can relax while the air purifier sets the correct air purification level automatically.

Once your air purifier is switched on, you can set a timer to switch it off automatically after 1 hour, 4 hours or 8 hours by pressing the TIMER button.

For use during the night, you can set the unit to night mode: the fan speed will change to low and other indicator lights turn off. Press any button to wake up the unit; it will keep running on low speed but if there is no further operation within five seconds, it will return to night mode. To exit night mode, press any button to wake up the unit, then within five seconds alter the fan speed by pressing the SPEED / AUTO button.

Press the fan speed button to exit sleep mode; You can enhance the air purification effect by switching on the anioniser function, which creates negative ions and discharges them into the air to help remove dust and other air pollutants by electrostatic attraction.

When it is time to clean or replace the filters, the filter indicator will flash. Replace the filters following the instructions in the manual; new filter sets are available for purchase from our after sales support centre. After filter replacement, don't forget to press and hold the ANION / FILTER button for three seconds for the counter to reset.



## Give us a call

What? You mean this Quick Start Guide didn't have ALL the answers? The manual has more comprehensive instructions, or speak to us. Call our After Sales Support on 1300 112 534.

Well done, you made it! Now sit back and enjoy clean indoor air free of smoke, dust, odour and other pollutants. Your new air purifier is automatically covered by a 1 year warranty.