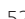



## Additional Information

## Specification

Power consumption	Refer to the main label.
AC adapter	<ul style="list-style-type: none"> <li>• Model : DA-38A25</li> <li>• Manufacturer : Asian Power Devices Inc.</li> <li>• Input : 100 - 240 V ~ 50 - 60 Hz</li> <li>• Output : 25 V  1.52 A</li> </ul>
Dimensions (W x H x D)	Approx. 890.0 mm X 57.0 mm X 85.0 mm With foot
Bus Power Supply (USB)	5 V  500 mA
Amplifier (Total RMS Output power)	300 W RMS

Design and specifications are subject to change without notice.

## OPEN SOURCE SOFTWARE NOTICE INFORMATION

To obtain the source code under GPL, LGPL, MPL, and other open source licenses, that is contained in this product, please visit <http://opensource.lge.com>.

In addition to the source code, all referred license terms, warranty disclaimers and copyright notices are available for download.

LG Electronics will also provide open source code to you on CD-ROM for a charge covering the cost of performing such distribution (such as the cost of media, shipping, and handling) upon email request to [opensource@lge.com](mailto:opensource@lge.com).

This offer is valid for a period of three years after our last shipment of this product. This offer is valid to anyone in receipt of this information.



## SIMPLE MANUAL

# Wireless Sound Bar

Please read this manual carefully before operating your set and retain it for future reference.

To view the instructions of advanced features, visit <http://www.lg.com> and then download Owner's Manual.

Some of the content in this manual may differ from your unit.

MODEL

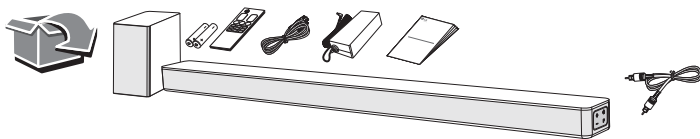
SN4

**HDMI™**  
HIGH-DEFINITION MULTIMEDIA INTERFACE



MFL71686130  
1912\_Rev01

[www.lg.com](http://www.lg.com)  
Copyright © 2021 LG Electronics Inc. All Rights Reserved.



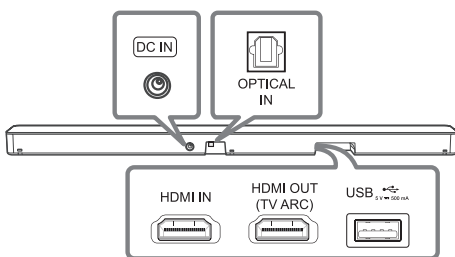
### Front Panel

The buttons are located on the side.



- ⏻ (Standby) ..... Switches the unit ON or OFF.
- F (Function) ..... Selects function.
- /+ (Volume) ..... Adjusts volume.

### Rear Panel



- DC IN** ..... Connect to the AC adapter.
- OPTICAL IN** ..... Connect to an optical device.
- HDMI IN** ..... Connect to device with HDMI OUT.
- HDMI OUT (TV ARC)** ..... Connect to a TV.
- USB Port** ..... Connect to a USB device.

! Make sure to properly align and connect the optical cable; improper alignment may cause damage to the jack.

### Subwoofer Connection

Place the wireless subwoofer near the sound bar and follow steps below.

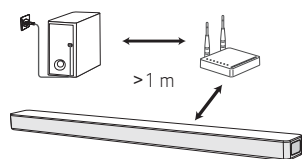
- 1 Connect the power cord of the sound bar and the wireless subwoofer to the outlet.
- 2 Turn on the sound bar.
  - The sound bar and wireless subwoofer will be **automatically** connected. The subwoofer's yellow - green LED turns on.

### Manual Subwoofer Connection

If the subwoofer does not make sound, try to connect manually.

- 1 Press **PAIRING** on the rear of the wireless subwoofer.
  - The yellow - green LED on the front of the wireless subwoofer blinks quickly. (If the yellow - green LED does not blink, press and hold the **PAIRING**.)
- 2 Turn on the sound bar.
  - Pairing is completed. The yellow - green LED on the front of the wireless subwoofer turns on.

! Keep the sound bar and the subwoofer away from the device (ex. wireless router, microwave oven, etc.) over 1 m to prevent wireless interference.

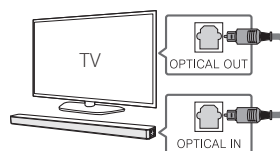


### TV Connection

Connect the sound bar and TV using Optical (A) or HDMI ARC (B).

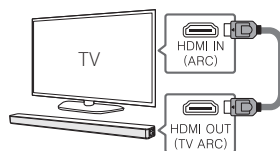
#### A Optical Connection

- 1 Connect the sound bar to the TV using Optical cable.
- 2 Set up [External Speaker (Optical)] on your TV setting menu.



#### B HDMI (ARC) Connection

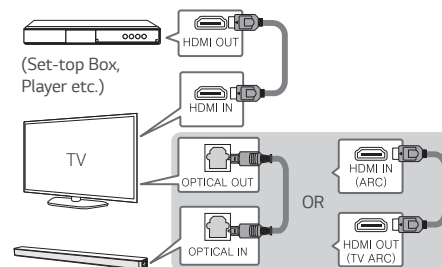
- 1 Connect the sound bar to the TV using HDMI cable.
- 2 Set up [External Speaker (HDMI ARC)] on your TV setting menu.



- ! HDMI connection is unavailable if your TV does not support HDMI ARC.
- If this unit is connected by OPTICAL and ARC at the same time, the ARC signal has a higher priority.

### Additional Device Connection

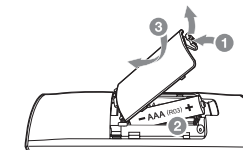
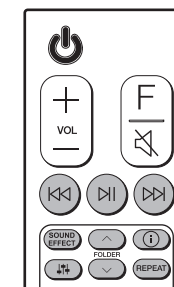
- 1 Connect to the external device like as follow.



- 2 Set the input source by pressing **F** repeatedly.

### Remote control

#### Replacement of Battery



⏪/⏩: Skip/Search

⏸: Play/Pause

- **Bluetooth connection lock (BT LOCK)**: Select the **Bluetooth** function by pressing **F** repeatedly. Long press **⏸** and press it again to limit Bluetooth connection to only BT and LG TV.

**SOUND EFFECT**: Selects a sound effect mode.

- **TV remote**: Long press **SOUND EFFECT** and press it again to use TV remote control.

**FOLDER** ^/∨: Searches a folder.

ⓘ: Displays the information of a file, an input source or connected **Bluetooth** device name.

- **Auto Power ON/OFF**: Long press ⓘ and press it again.

⏮/⏭: Adjusts sound level of each speaker.

**REPEAT**: Listens to your files repeatedly or randomly.