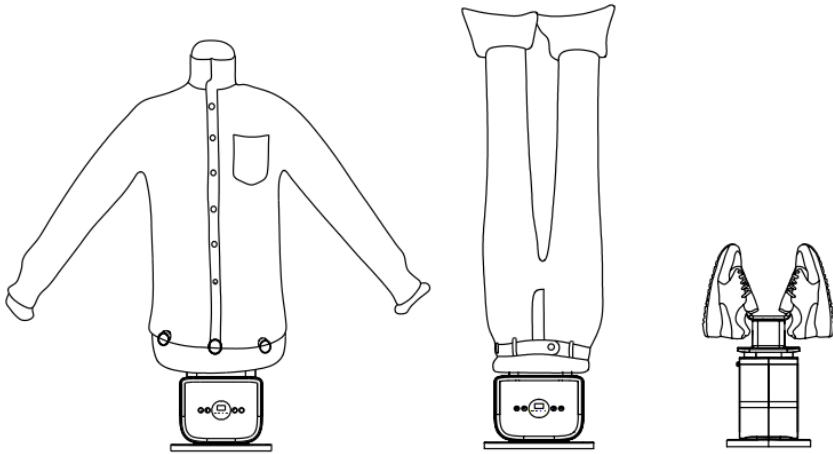


# scanovus



## AUTOMATIC IRONING MACHINE 3.0

### INSTRUCTION MANUAL

PLEASE READ THE INSTRUCTIONS IN FULL CAREFULLY BEFORE USE  
AND KEEP THEM FOR FUTURE REFERENCE.



**NOTE: PLEASE LOOK AT THE LAST PAGE FOR HELPFUL HINTS**

### **A. Intended Use**

1. This device is intended to be used to dry and press textiles, for example blouses and shirts. Delicate textiles such as wool or similar fabrics must not be pressed on the presser. Always follow the care labels for the textiles before use.
2. The device is for personal use only and is not intended for commercial applications.
3. The device should only be used as described in these instructions. Any other use is deemed to be improper.

### **B. Important Safeguard**

1. Please always keep away from water and fire; place the device on the hard and flat floor and good air circulation area.
2. The device can use soft cloth to wipe the surface only. Never immerse the device, the mains cable or the mains plug in water or other liquids.
3. Please hang on the cloth after dehydration; NEVER drip water.
4. This device is not intended for use by persons (including children) with reduced physical, sensory or mental capabilities, or lack of experience

and knowledge, unless they have been given supervision or instruction concerning use of the device by a person responsible for their safety.

5. Children being supervised not to play with the device.
6. Never cover the wind inlet and outlet.
7. If the supply cord is damaged, please return to authorized service center for repair. Do not attempt to disassemble or repair yourself.
8. The device must always be switched off and disconnected from the mains power when it is not being used and before assembling, disassembling or cleaning the device.
9. Allow the device to cool down completely before it is cleaned and stored away.
10. Suitable for textiles such as pants and shirts, delicate textiles such as wool or similar fabrics must not be pressed on the device.
11. CAUTION: Hot surfaces! The motor unit/telescopic rod will become hot during use. You should therefore not touch it during or shortly after use.

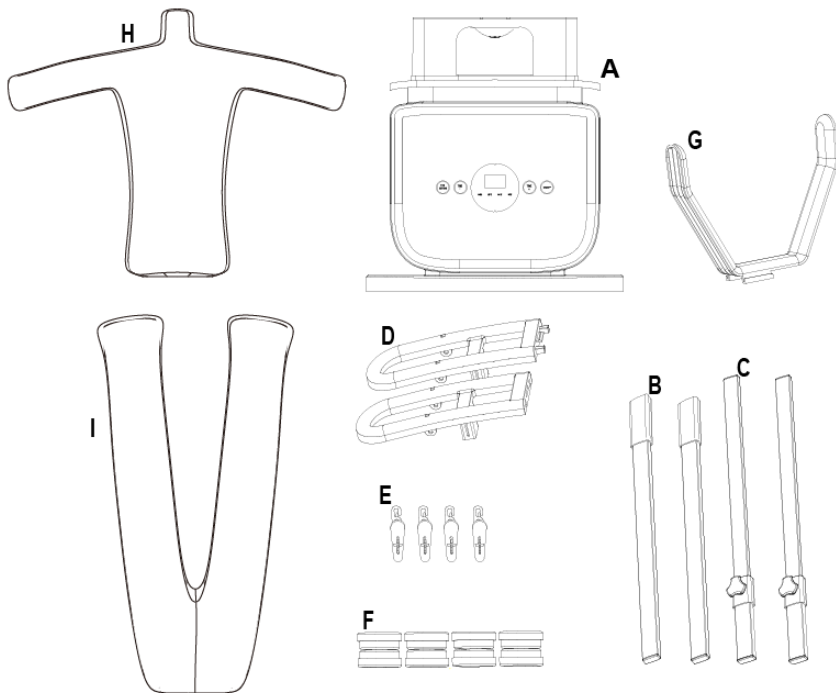
**C. Product Specification**

1. Rated Voltage: 220-240V~
2. Rated Frequency: 50/60Hz
3. Rated Power: 1250W
4. Timer: 0-60 minutes or on
5. Protection class: II

**D. Product Feature**

1. Safety ceramic heating element.
2. Super strong wind and low noise fan.
3. Novelty and elegant structure design, with clips to presser and hidden type power cord.
4. Hot air tension technology heats and smooth your garments
5. High temperature to dry the garments in a short time.

## E. Product Overview

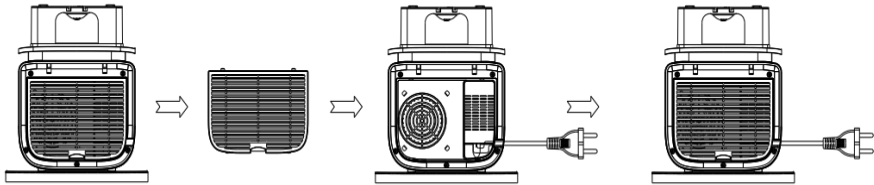


**F. Product Components**

Serial No.	Part name	Quantity
<b>A</b>	Motor unit	1set
<b>B</b>	Lower rod	2pcs
<b>C</b>	Telescopic rod	2pcs
<b>D</b>	Hanger	1set
<b>E</b>	Clips	4pcs
<b>F</b>	Magnetic clamps	4pcs
<b>G</b>	Shoes rack	1pc
<b>H</b>	Shirts balloon	1pc
<b>I</b>	Pants balloon	1pc

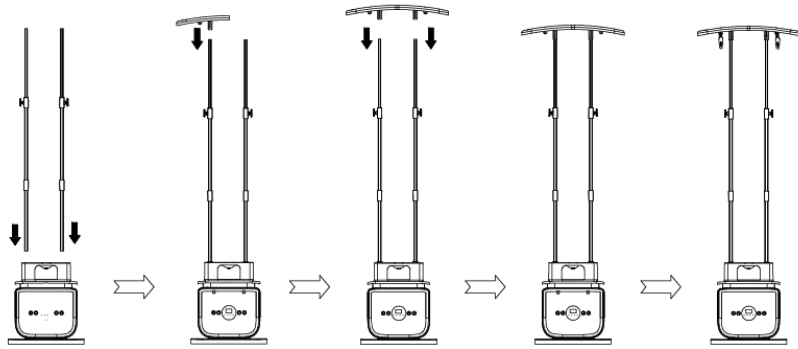
## G. Assembly

- Pull the main plug out of the back of motor unit.

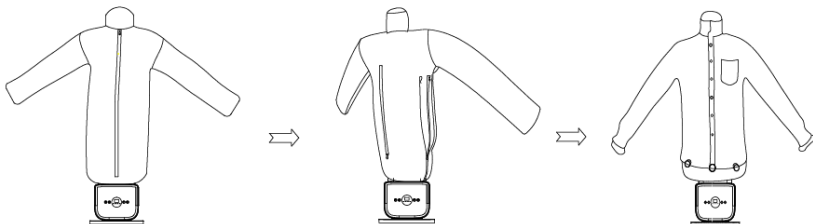


## SHIRTS

- Connect the lower rods (B) with the telescopic rods (C), Insert the two telescopic rods with the lower rods into the corresponding holes of the motor unit (A), and set the height you want. To do this, open the screw, pull out the telescopic rod and then close the screw again. Place the hanger (D) (with 4 clips (E), if you want to dry socks or underwear while the machine is on) onto the top of telescopic rods (C).



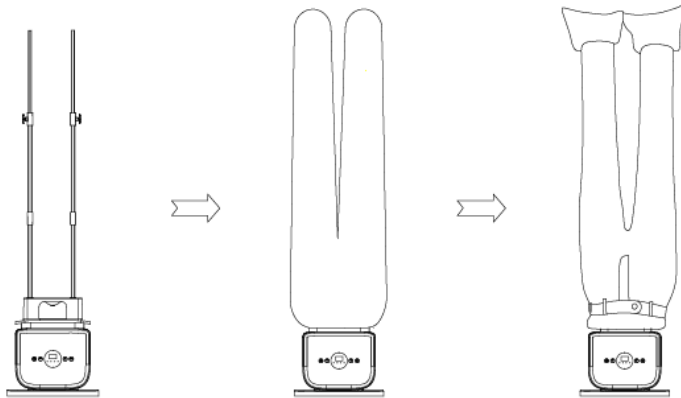
- Put on the shirts air bag (H) and pull the elastic cord at the bottom of airbag over the mounting flange (A). Hang the garments over the shirts air bag from back and turn on the motor. After the body is inflated, make sure the shirt hangs tight around the body. Put the magnetic clamps (F) on the bottom of garments, stretch the garment to make it smoother.
- **Size setting:** Open or close the zipper of shirts airbag (H) to fit a variety of different shirt sizes. There are 2 in each side.





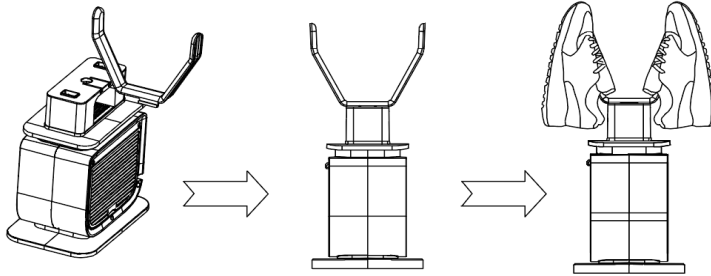
## PANTS

- Take of the hanger (D) and extend the telescopic rods (C). Put on the pants balloon (I) and pull the elastic cord at the bottom of airbag over the mounting flange (A). Hang the pants over the body and turn on the motor.



## SHOES

- Insert the shoes rack (G) on the top of motor unit (A). Hang the shoes over the rack and turn on the motor unit.

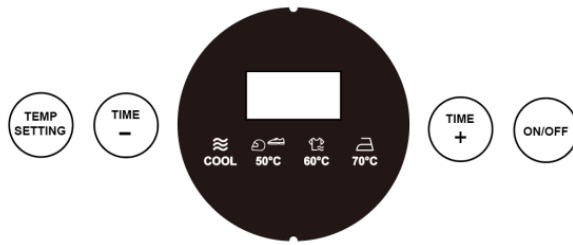


## H. Disassembly

To disassemble this machine, follow the assemble steps in reverse.

## I. How to use

1. Insert the power plug into power socket, enter the standby state after power.
2. Select ON/OFF button to start the machine.
3. Select the TEMP SETTING to the one you require at the position of COOL, 50°C, 60°C or 70°C; and select TIME+/ TIME- to the one you require, Then the machine starts to work.



## J. Tips

Please make the Shirts/Pants is formfitting and smooth on the air bag.

## K. Attention

1. Wet clothes, shoes, and other items should be wrung or dried so that they are not soaked.
2. Please ensure that the clothes and shoes to be ironed and dried can withstand the temperature you set.

## L. Troubleshooting

No.	Problem	Possible cause/solution
1	The device does not work. The LEDs do not light up.	<ul style="list-style-type: none"> <li>● Is the mains plug inserted in the plug socket correctly? Correct the fit of the mains plug.</li> <li>● Is the plug socket defective? Try another plug socket.</li> <li>● Check the fuse of the mains connection.</li> <li>● Is the device switched on? Set the timer to a time.</li> </ul>
2	Unusual noises	<ul style="list-style-type: none"> <li>● Are the wind outlet covered up or blocked? Free up the outlet vent.</li> </ul>
3	The device switches off suddenly.	<ul style="list-style-type: none"> <li>● Are the wind outlet covered up or blocked? Free up the outlet vent.</li> <li>● The device has an automatic safety switch-off function. It switches off automatically if it overheats. Allow the device to cool down and switch it on again.</li> </ul>
4	Odors produced	<ul style="list-style-type: none"> <li>● You may notice a slight odor from production residues during the first use. Rest assured, this is harmless and will disappear with continued use.</li> </ul>

## DAMP CLOTHING

For the best results, the fabric should be damp. Iron clothes directly from the wash or spray them with water once placed on the machine.

## SIZE ADJUSTMENT

Adjust the telescopic rods to set the height. Use both side zippers to adjust the width – the larger the size, the more the zippers should be opened.

## WEIGHT CLIPS

Place the weight clips at the bottom to ensure that the critical areas of the garment are properly stretched.

## TEMPERATURE AND TIME

Set the temperature and time according to the fabric type. Use a lower temperature for delicate fabrics.

## FOLD THE COLLAR

Fold up the collar and button all buttons while ironing.