



DPA Reel Mower Rear Roller Scraper Kit

Greensmaster® 3000 Series

Model No. 04646—Serial No. 312000000 and Up

Installation Instructions

Refer to the Maintenance Safety section in your cutting unit *Operator's Manual* before installing this kit.

Loose Parts

Use the chart below to verify that all parts have been shipped.

Description	Qty.	Use
Bearing assembly	6	Install the kit.
Bolt	12	
Washer (M6)	12	
Locknut (M6)	12	
Scraper pin	6	
Locknut (M8)	6	
Washer (M8)	12	
Right spring	3	
Left spring	3	
Scraper bar	3	

Installing the Kit

Note: The right and left side of the cutting unit is determined from the rear of the unit.

1. Attach a bearing assembly to each end of the scraper bar with 2 bolts, 2 washers (M6), and 2 locknuts (M6) as shown in [Figure 1](#).

Note: Do not tighten the locknuts at this time.

2. Mount a scraper pin to the right cutting unit side plate with 2 washers (M8) and a locknut (M8) as shown in [Figure 1](#). Use the top hole in the side plate and ensure that the scraper pin faces inward.
3. Slide the right spring onto the scraper pin. Position the spring as shown in [Figure 1](#).
4. Slide the right scraper bar bearing onto the scraper pin.
5. Slide the left spring onto the remaining scraper pin.
6. Insert the scraper pin into the bearing on the opposite end of the scraper bar.
7. Mount the scraper pin to the left cutting unit side plate with 2 washers (M8) and a locknut (M8) as shown in [Figure 1](#). Use the top hole in the side plate.

Note: The small hook ends of the springs should be over the cutting unit side plates. The large hook ends should be over the scraper bar.

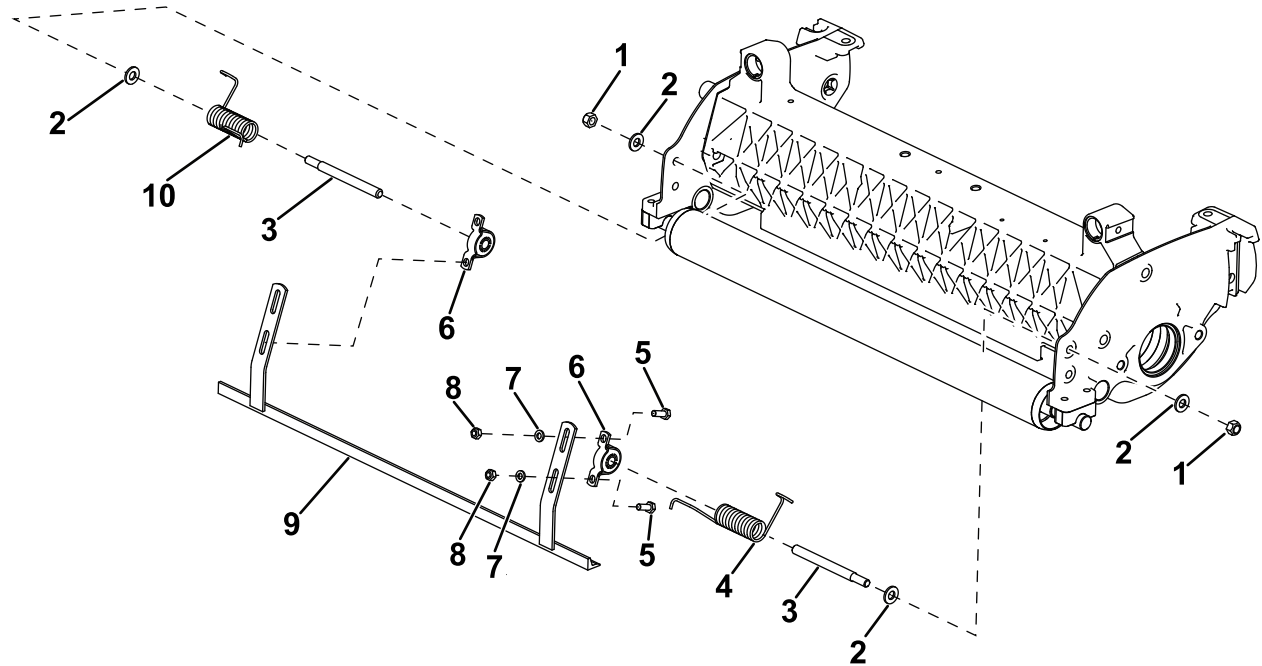
8. Slide the scraper bar bearing assemblies either upward or downward in the slotted holes until the bottom of the scraper bar is the same height at each top-edge end of the cutting-unit bedknife, or the same as the height-of-cut setting. Tighten the bearing mounting fasteners to secure the adjustment.
9. Bend the scraper bar, if necessary, to ensure that the bar is flush with the full length of the roller and rests against the roller with equal tension at all points.

Important: The proper height setting and tension of the scraper against the roller is critical. The scraper bar will either not properly clean the roller, will ruffle the grass, or leave large clumps of grass on the turf.



Important: Spring the scraper bar away from the roller and thoroughly wash the unit with a hose after each use. Failure to follow this practice can result in pitting of the roller.

10. Repeat this procedure on the remaining cutting units.



g553341

Figure 1

- | | | | |
|-----------------|---------------------|-----------------|-----------------|
| 1. Locknut (M8) | 4. Right spring | 7. Washer (M6) | 10. Left spring |
| 2. Washer (M8) | 5. Bolt | 8. Locknut (M6) | |
| 3. Scraper pin | 6. Bearing assembly | 9. Scraper bar | |