

d. Connect your smartphone to Wi-Fi and check whether the network works well.

e. Make sure you have entered the correct Wi-Fi name and password.

f. If the light is too far away from the Wi-Fi, bring the device closer to the Wi-Fi, and then reconnect to the network.

g. Check if there are too many devices connected to the network. If so, change to another network.

### 3 The adhesive tape is not strong enough.

a. Use the clips to secure the light firmly during installation.

b. Make sure the installation surface is dust-free, smooth and dry before installation.

c. The 3M adhesive will be less sticky after being used once. Do not stick repeatedly. If you accidentally stick it wrong or the adhesive falls off, replace the adhesive with a new one and try again.

d. If the roof surface is rough, it is recommended to use clips with screws for installation.

e. Due to the nature of the adhesive, the initial tack is low at low temperatures. Try to warm up the adhesive as well as the installation location to achieve the best installation result.



Govee Home App

For FAQs and more information,  
please visit: [www.govee.com](http://www.govee.com)

### 4 App operation guide is needed

a. Open Govee Home App, tap My Profile>> Govee Instructions>> App Guide>> How to Use to find more details.

### 5 For other issues

a. Please contact the Govee support team.

## Customer Service

Warranty: 36-Month Limited Warranty

Support: Lifetime Technical Support

Email: [support@govee.com](mailto:support@govee.com)

Official Website: [www.govee.com](http://www.govee.com)

@Govee @govee\_official @govee.official

@Goveeofficial @Govee.smarthome

## FCC and ISED Canada Statement

This device complies with Part 15 of the FCC Rules and Industry Canada licence-exempt RSS standard(s). Operation is subject to the following two conditions:

(1) This device may not cause harmful interference, and (2) This device must accept any interference received, including interference that may cause undesired operation.

Warning: Changes or modifications not expressly approved by the party responsible for compliance could void the user's authority to operate the equipment.

Le présent appareil est conforme aux CNR d'Industrie Canada applicables aux appareils radio exempts de licence. L'exploitation est autorisée aux deux conditions suivantes :

(1) l'appareil n' doit pas produire de brouillage, et  
(2) l'utilisateur de l'appareil doit accepter tout brouillage radioélectrique subi, même si le brouillage est susceptible d'en compromettre le fonctionnement.

**NOTE:** This equipment has been tested and found to comply with the limits for a Class B digital device, pursuant to Part 15 of the FCC Rules.

These limits are designed to provide reasonable protection against harmful interference in a residential installation. This equipment generates uses and can radiate radio frequency energy and, if not installed and used in accordance with the instructions, may cause harmful interference to radio communications. However, there is no guarantee that interference will not occur in a particular installation. If this equipment does cause harmful interference to radio or television reception, which can be determined by turning the equipment off and on, the user is encouraged to try to correct the interference by one or more of the following measures:

1.Reorient or relocate the receiving antenna.  
2.Increase the separation between the equipment and receiver.  
3.Connect the equipment into an outlet on a circuit different from that to which the receiver is connected.  
4.Consult the dealer or an experienced radio/TV technician for help.

This Class B digital apparatus complies with Canadian ICES-005. Cet appareil numérique de la classe B est conforme à la norme NMB-005 du Canada.

## FCC and IC Radiation Exposure Statement

This equipment complies with FCC and IC radiation exposure limits set forth for an uncontrolled environment. This equipment should be installed and operated with minimum distance 20cm between the radiator & your body.

Lors de l'utilisation du produit, maintenez une distance de 20 cm du corps afin de vous conformer aux exigences en matière d'exposition RF.

**Responsible party (this contact information is only for FCC matters) :**

**Name:** GOVEE MOMENTS(US) TRADING LIMITED  
**Address:** 2501 Chatham Rd Suite R Springfield IL 62704  
**Email:** [certification@govee.com](mailto:certification@govee.com)  
Contact information: <https://www.govee.com/support>

The Bluetooth® word mark and logos are registered trademarks owned by Bluetooth SIG, Inc. and any use of such marks by Shenzhen Qianyan Technology LTD is under license.

The trademark Govee have been authorised to Shenzhen Qianyan Technology LTD.  
Copyright ©2021 Shenzhen Qianyan Technology LTD.  
All Rights Reserved.



# User Manual

Model: H705E  
Govee Permanent Outdoor Lights 2

# READ AND SAVE THESE INSTRUCTIONS

## Safety Instructions

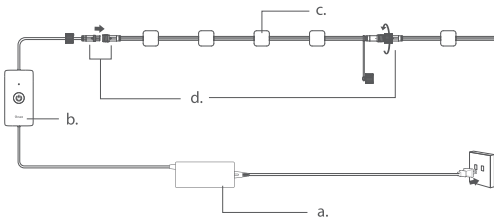
- This string light is rated as IP67 Waterproof. It can be used outdoors but cannot be immersed in water for a long time.
- The control box is rated as IP65. It can be used outdoors but cannot be immersed in water.
- The power adapter is used for indoor dry location.
- Risk of Electric Shock. The adapter install only to a covered Class A GFCI receptacle that has an enclosure that is weatherproof with the attachment plug cap inserted or removed.
- To prevent the string light from falling down, ensure it is installed with both the adhesive tape and the clips.
- Tighten up the waterproof cap before using the light.
- Do not allow children to assemble and install this product.
- Avoid installing this product near major heat sources or other dangerous sources.

- Avoid using other non-standard adapters for this product.
- External dimmers cannot be used with this product.
- Use this product with the provided power adapter only.
- This device uses a non-replaceable light source. When the light source reaches the end of its life cycle, this device should be replaced.
- CAUTION-The product is not a toy. Children and the disabled should use it under adult supervision.
- To reduce the risk of strangulation, the flexible wiring connected to this luminaire shall be effectively fixed to the wall if the wiring is within arm's reach.

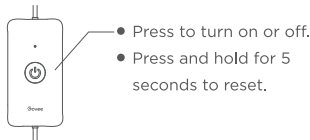
## What You Get

Item	Quantity
String Light	6
Power Adapter	1
User Manual	1
Quick Start Guide	1

## At a Glance



- a. Power Adapter
- b. Control Box
- c. Permanent Lights
- d. Waterproof Connector



## Pairing Your Light with Govee Home App

### What You Need

- A Wi-Fi router supporting the 2.4GHz and 802.11 b/g/n bands. 5GHz is not supported.
- A smartphone or tablet running iOS 8.0 and above or Android 4.3 and above.



- 1 Download Govee Home App from the App Store (iOS devices) or Google Play (Android devices).
- 2 Turn on your smartphone's Bluetooth.
- 3 Open the app, tap the "+" icon in the top right corner and search for "H705E."
- 4 Tap the device icon and follow the on-screen instructions to complete pairing.

## Controlling the Light with Your Voice

- 1 Open the app, then tap the device icon to enter the details page.
- 2 Tap the settings icon in the top right corner.
- 3 Select User Guide and follow the on-screen instructions to control the device using your voice.

## Specifications

Power Input (Adapter)	100-240VAC 50/60Hz
Power Input (Light)	36VDC 2A
Length	100ft
Waterproof	String Light: IP67 Control Box: IP65
Light Displaying Technology	RGBWIC
Color Temperature	4000K
Maximum Extension Length	150ft

## Troubleshooting

- 1 The light does not work./Part of the light does not light up.
  - a. Check whether the adapter is working properly. A dim green light will appear at the front side of the adapter (close to the output end) when the U.S. standard adapter is in the normal working state.
  - b. Go to the details page of the light in the app. Tap the settings icon in the upper right corner and adjust in Settings of Number of Segments.
  - c. Make sure you have connected the wire connectors between the string lights.
  - d. Long press the control box for more than 5s to reset the whole light.
  - e. Remove the last string light that lights up. Then, connect each string light that cannot light up with the remaining string lights that can light up properly. Repeat this step until you find the malfunctioning string lights.
- 2 Cannot connect to Wi-Fi.
  - a. Do not skip the Wi-Fi connection steps in the app.
  - b. Make sure your home Wi-Fi is 2.4Ghz and your smartphone's Bluetooth is on.
  - c. Long press the control box for more than 5s to reset the whole light. Unbind and then rebind the light.