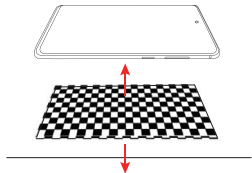
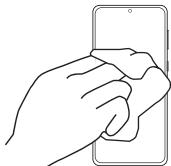


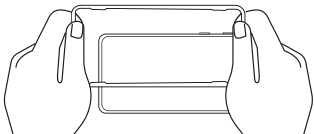
- 1** Begin by placing your device on the included mat. This will ensure that the phone doesn't move during the installation process.



- 2** Clean the screen with the Wet/Dry Wipes and the Dust Removal Stickers.



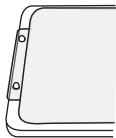
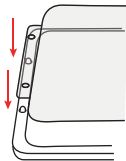
- 3** Place the application tray over your device, and firmly press it into place.



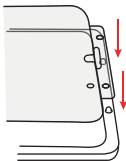
- 4** Peel the first mask film from the screen protector. This is labelled "Step 1 Tab."



- 5** Align the holes in the tab on the bottom of the protector to the plastic pegs on the application tray. These will help keep the protector in place.

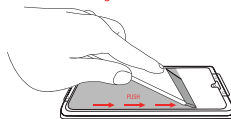


- 6** Repeat Step 5 for the other end of the phone.

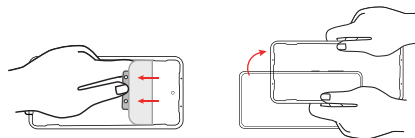


- 7** Use the squeegee to apply the screen protector to your device's screen by FIRMLY pushing from one end to the other.

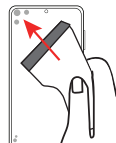
**Please make sure that no bubbles appear under the protector during this process. If bubbles occur, use the squeegee to push them towards the edges and out from under the protector.*



- 8** Remove the second mask film from the top of the newly applied screen protector. Then, remove the application tray. Now the application process is complete.



- 9** If bubbles remain around the edges of the screen protector, use the squeegee again to push the bubbles out from under the edges of the glass.



Damaged or Arrived Broken?

Try our 1-Click Warranty Claim

Go to TechMatte.com/WarrantyClaim

OR

Scan the QR Code Below.



Want More Coverage?

Unlock our Lifetime Warranty

Go to TechMatte.com/Register

OR



24/7 Customer Support



support@techmatte.com

www.techmatte.com

STAY CONNECTED



@TechMatte



@TechMatte



/TechMatte



@tech.matte



Installation Guide

Scan Me



or visit

www.techmatte.com/install/hybrid