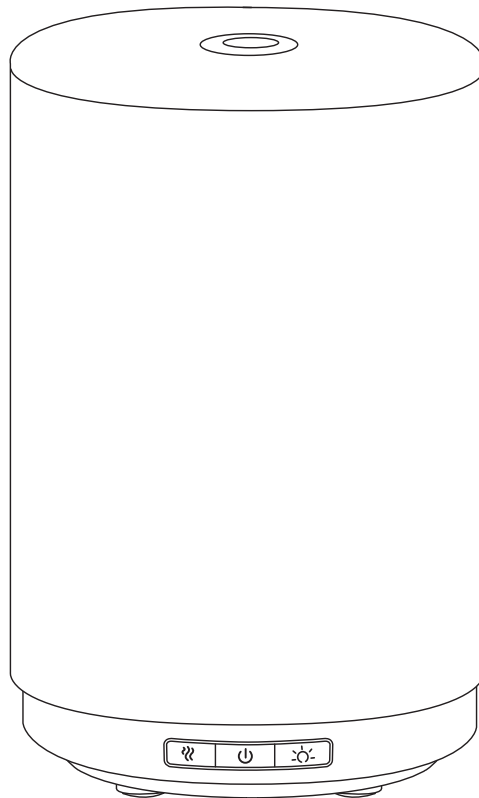


naeo

DIFFUSING WELLNESS


LUNA ULTRASONIC AROMA DIFFUSER



Please read this manual carefully and keep it in a safe place.

WARNING

- This appliance can be used by children aged from 8 years and above and persons with reduced physical, sensory or mental capabilities or lack of experience and knowledge if they have been given supervision or instruction concerning use of the appliance in a safe way and understand the hazards involved. Children should not play with the appliance. Cleaning and user maintenance shall not be made by children without supervision.
- Only to be used for ambience diffusion purposes, do not inhale.
- Use in an environment between 10°C and 30°C.
- This appliance is only to be used with the supplied power adaptor.
- For optimal maintenance, use mineral water (bottled or tap water).
- Do not exceed the maximum water level (150 ml).
- Always add water to the tank before adding essential oils or home fragrance.
- Do not use pure essential oils, nor home fragrances without water.
- The appliance is only to be used with the recommended vaporizing medium. The use of other substances may give rise to a toxic or fire risk.
- Continuous use of the diffuser may, in the long term, wear out the product and shorten its lifespan.
- Unplug the appliance before any maintenance such as cleaning or filling.
- Empty the tank when the appliance is not in use.
- Do not remove the lid or cover the diffuser when the appliance is in use.
- Frequently change the water in the tank to avoid any dirt build up that may damage the appliance.
- Do not immerse in water.
- In case water infiltrates the appliance, unplug the diffuser immediately and leave to dry for at least 3 days before reusing.

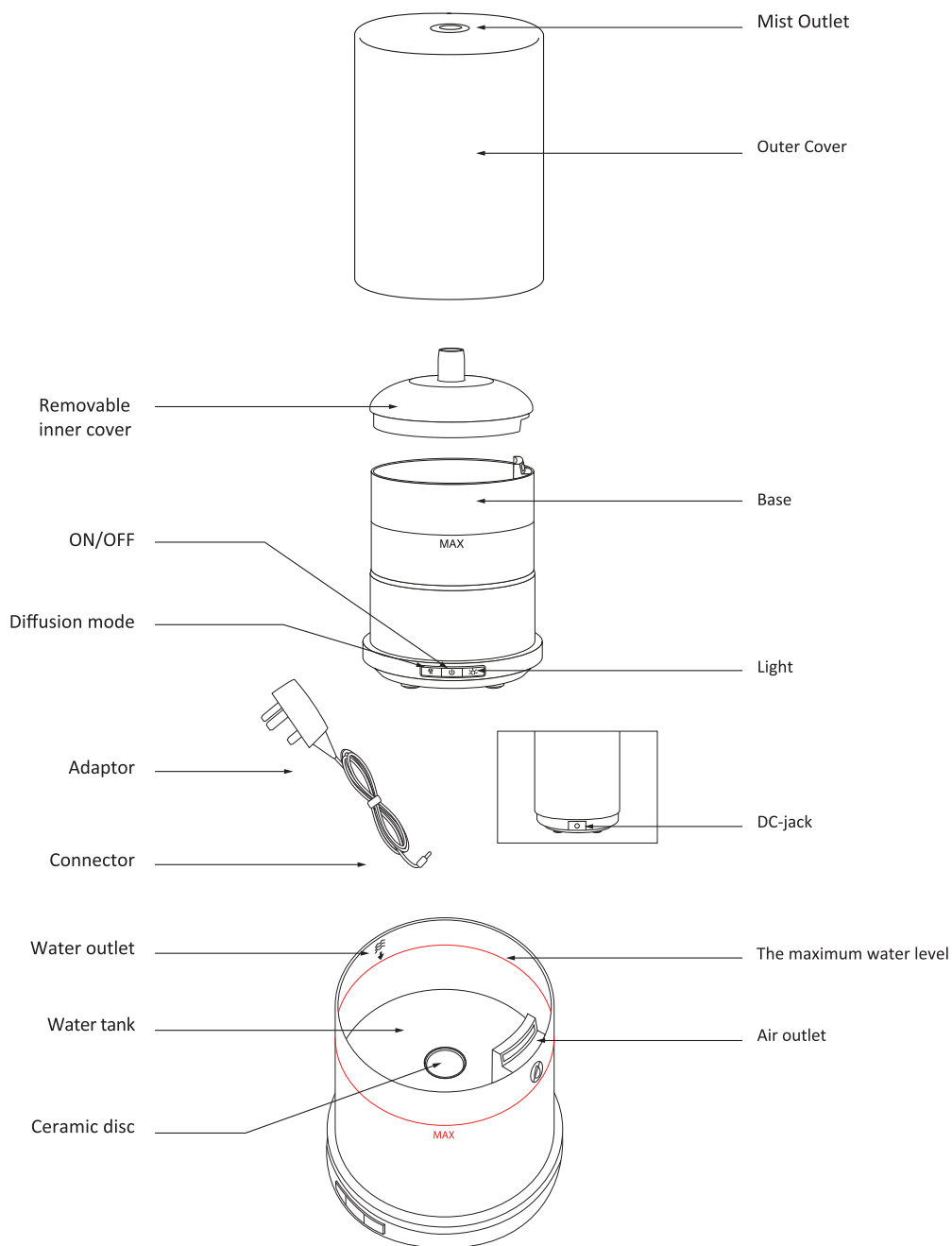
-  Clean the water tank every 3 days. Do not use chemical products (such as acids, alkaline, etc.) or any corrosive detergents to clean the appliance.
- To Descale: Fill with equal parts white vinegar and water, operate the appliance for an hour, then turn off and let it sit for an hour.
- Be aware that high humidity levels may encourage the growth of biological organisms in the environment.
- Do not permit the area around the diffuser to become damp or wet. If dampness occurs, turn off the diffuser.
- Empty and clean the diffuser before storage. Clean the diffuser before next use.
- Warning: Micro-organisms that may be present in the water or in the environment where the appliance is used or stored, can grow in the water tank and be blown in the air causing very serious health risks when the water is not renewed and the tank is not cleaned properly every 3 days.
- Empty the tank and refill every third day. Before refilling, clean it with fresh tap water or cleaning agents if required by the manufacturer. Remove any scale, deposits, or film that has formed on the sides of the tank or on interior surfaces, and wipe all surfaces dry.
- Always place the appliance on a smooth, lint-free, non-metallic, waterproof and level surface.
- Keep the cord away from heated surfaces and areas where it could be walked on or tripped over.
- Always plug and unplug the appliance with dry hands to avoid electric shock.
- For optimal performance, use only clean, cool water. Do not use hot water.
- Do not aim mist directly at children, pets, walls, furniture or electrical appliances.
- Do not place the appliance in direct sunlight, next to a radiator or by an open fire.

WARNING

- Do not block any air inlets or outlets in any manner.
- Use this appliance only as described in this manual. Any other use is not recommended by the manufacturer and may cause fire, electric shock or injury.
- This appliance must not be located immediately below a socket-outlet.
- Do not operate any appliance with a damaged cord, plug, adaptor or after the appliance malfunctions or has been dropped or damaged in any manner.
- Do not use this appliance outdoors or on wet surfaces.
- Do not use detergents, solvents or abrasive cleaning products on this appliance. Clean with a damp (not wet) cloth rinsed in hot soapy water only. Always unplug from the mains supply before cleaning.
- Always disconnect appliance from the power supply when not in use.
- Do not use this appliance in the immediate surroundings of a bath, a shower or a swimming pool.
- This appliance is not recommended for use with an extension cord.
- Do not operate outdoors. This appliance is intended for indoor use only.
- NOTE: People suffering from perfume sensitivity should be cautious when using this product with any fragranced oils.
- When storing the appliance, let all parts dry completely before storing away in a cool, dry place until the next use.
- IMPORTANT: We recommend you clean your aroma diffuser every time you change oils as essential oils can build up over time.

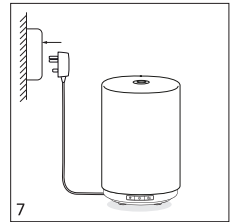
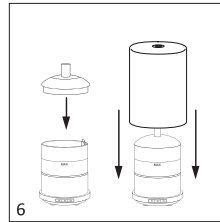
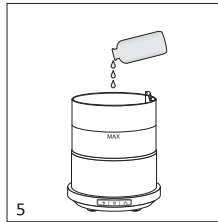
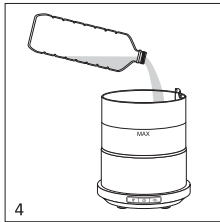
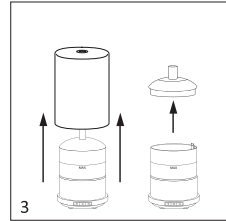
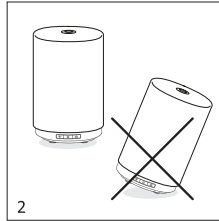
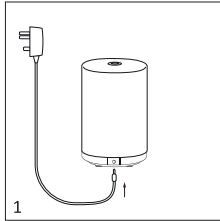
The producer is not responsible for damages caused by wrong use of device.

DETAILED DIAGRAM OF THE COMPONENTS



PREPARATION OF THE DIFFUSER

1. Insert the adaptor's connector into the DC jack input at the back of the base of the diffuser.
2. Place the diffuser on a flat and stable surface and away from the edge.
3. Remove the diffuser's outer and inner cover.
4. Pour **mineral water** (bottled or tap water) into the water tank up to the maximum level indicated (150 ml).
5. Add a few drops of essential oils (3-6 drops) or home fragrances to the water tank.
6. Replace the inner cover and the outer cover on the diffuser.
7. Plug the adaptor into the appropriate outlet.



OPERATION

This diffuser has 3 function buttons on the front side:



ON/ OFF (middle button) :

1. Press the ON/OFF button to turn the device on. Both diffusion and light will be on, on continuous mode.
2. Press the ON/OFF button a second time to switch off the diffuser. Both diffusion and light will switch off.



Diffusion Mode (Left button):

When on, the diffuser will automatically switch on continuous mode at high mist volume.

1. Press once to switch to low mist volume. The light flashes once for indication.
2. Press a second time to switch to intermittent diffusion 30 sec on/ 30 sec off for one hour. After one hour, both diffusion and light will turn off. The light flashes twice for indication.

Note: This mode is particularly recommended at night. It will diffuse the right amount of essential oils to accompany you towards a serene night's sleep.

3. Press a third time to go back to high mist volume on continuous mode. The light flashes three times for indication.



Light (Right button):

When on, the light will automatically switch on warm white mode.

1. Press to turn off the light.
2. Press again to turn the light back on.

Note: the light can work independently of the diffusion and without water in the tank. Simply press the light button to turn the light on and off.

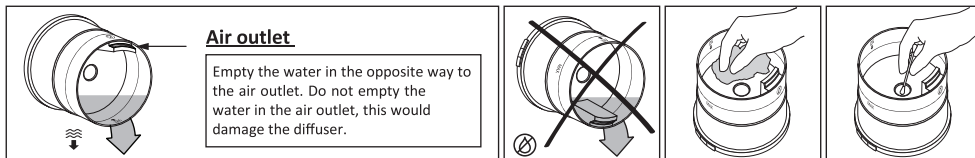
Remark:

When the water in the tank runs too low, the diffuser stops automatically. To go back to normal working, top the water up following the instructions for use.



MAINTENANCE

You are advised to change the water frequently in the tank and clean the diffuser every 3 days, particularly if you want to change the fragrance to be diffused.



1. Turn the appliance off and unplug it.
2. Remove the covers and empty the water on the opposite side of the air outlet. Do not empty the water in the air outlet, this would damage the diffuser.
3. Clean the diffuser water tank using a soft damp cloth. If needed, use a little white vinegar strongly diluted. Do not use corrosive detergents. Carefully rub the ceramic disc with a cotton bud being careful not to scratch it.

TECHNICAL SPECIFICATIONS

- Item number: 409437
- Input power supply: AC 100-240V, 50/60Hz
- Output power supply: DC24V 500mA
- Ceramic disc lifespan: +/- 3000 hours
- Tank capacity: 150 ml
- Dimensions (approx): 110 x 155mm



Correct disposal of this product. This marking indicates that this product should not be disposed with other household wastes throughout the EU. To prevent possible harm to the environment or human health from uncontrolled waste disposal, recycle it responsibly to promote the sustainable reuse of material resources. To return your used device, please use the return and collection systems or contact the retailer where the product was purchased. They can take this product for environmentally safe recycling.



Everview Trading Ltd, 5 West Victoria Dock Road, DUNDEE, DD1 3JT, UK
Green Delta Ltd c/o SEDIS Logistics, 7 Rue des Sablières, 7522 Blandain, Belgium
Made in China

This appliance complies with the below listed UK Directives

Electromagnetic Compatibility Regulations 2016
Electrical equipment (Safety) Regulations 2016
Ecodesign for Energy-Related Products Regulations 2010
The Restriction of the Use of Certain Hazardous Substances in Electrical and Electronic Equipment Regulations 2012

This complete declaration of conformity is available upon request for relevant enquiries