

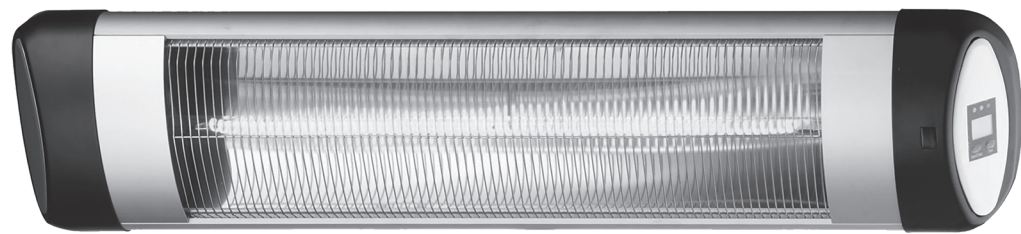


CZPH10R

Outdoor / Indoor Electric Patio Heater



Save These Instructions



Features:

- Powerful Carbon Fiber Heating Element
- Automatic Timer Setting
- Full Function Remote with Three Heat Settings
- Silent Operation
- IP34 Waterproof and Corrosion Resistant
- 3-prong Grounded Plug
- Heats an outdoor area up to 120 sq. ft.

SPECIFICATIONS

WATTS	VOLTS	AMPS	BTU/HOUR
1,500W	120A.C. 60Hz	12.5A	5,120

General Safety Information:

⚠ WARNING Read and understand installation and operation instructions and observe all safety instructions before using this heater.

1. This product should never be used in a vertical or diagonal position. Always mount this product horizontally.
2. Make sure that the main electricity circuit is 110-120V, 50-60Hz and the connection is fused.
3. Do not operate this product together with another heater plugged into the same outlet or connected to the same fuse.
4. Only use this product with the 3-prong grounded plug provided.
5. Check the heater and power cord for damage, and check the heating tube for cracks, scratches, or breakage. If any defects are found on the heater, power cord, or heating tube, do not use the heater and contact Customer Service.
6. Always unplug your heater when not in use.
7. While in use, do not allow the power cord to touch the heating unit.
8. The power cord must not be left on or around the frame of your heater.
9. Do not stick anything into the protective grid.
10. Do not leave the heater ON while unattended.
11. In order to avoid overheating, do not cover the heater. Do not put any blankets, articles of clothing, or other flammable material covering the heater.
12. Keep combustible material such as furniture, papers, clothes, curtains, bedding or papers at least 3ft. (0.9 m) from the front of the heater and away from the sides and rear.
13. Keep the heater clean. Do not allow objects to pass through the wire grille as this may cause electric shock, fire or damage to the heater.
14. Children and pets should be kept at least 18" away from heater at all times
15. Never allow the cord to touch wet or hot surfaces, become kinked or twisted or be within the reach of children. Do not allow the power cord to lay on the heater or touch the heater when the heater is operating or when it is still warm.

16. Do not place on or near a hot gas or electric burner.
17. Never touch the heater or heater controls with wet hands or feet.
18. Do not use the heater for anything other than its intended use.
19. This heater is intended for household use only.
20. This heater is not intended for use in bathrooms, laundry rooms, or other similar indoor areas. Never locate heater where it could fall into a bathtub, swimming pool, or other water container.
21. Do not attempt to perform repairs on your heater. Consult a professional electrician.
22. Do not use the heater if the protective wire grille is missing or damaged.
23. Do not use this heater in small rooms when they are occupied by persons not capable of leaving the room on their own, unless constant supervision is provided.
24. Supervision is needed when this product is used anywhere near children. The heater is not intended for use by people or pets without assistance or supervision if their physical, sensory or mental capabilities prevent them from using it safely.
25. The heater must not be located immediately above or below a socket/outlet.
26. Do not install this heater in acidic or alkaline environments.
27. For your safety, do not attach any accessories or other equipment to your heater.

WARNING: TO REDUCE THE RISK OF FIRE

1. Your heater should be installed at least 6 ft. (1.8m) above the ground. It should be installed at least 18" away from ceiling or roof, and should be at least 18" from a wall or structure to the left and the right of the mounted heater.
2. Keep combustible material such as furniture, clothes, curtains, bedding or papers at least 3ft (0.9m) from the front of the heater and away from the sides and back of the heater.
3. Always unplug the heater if it is not being used.
4. Avoid the use of an extension cord because the extension cord may overheat and cause a risk of fire.
5. Never block the front grille of the heater or drape blankets or clothing over the heater.

SAVE THESE INSTRUCTIONS

Installing Your Heater:

- Attention! The heater must only be operated in a horizontal position with max ± 15°slope. For safety, do not mount your heater in a vertical or diagonal position. (See Fig 1.)
- Never install your heater on a combustible surface. **DO NOT mount on plastic or vinyl.**
- The distance of your heater from the ground should be a minimum of 6 ft. (1.8 m).
- The distance of your heater from the ceiling should be a minimum of 1.5ft (0.7 m).

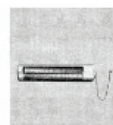
Fig. 1



Incorrect



Incorrect



Correct

Installation Instructions:

1. Please make sure your heater is unplugged from the outlet before installing.
2. Your heater includes 4 brackets, fasteners and screws to be used to mount your heater to the wall. There are 4 square fasteners pre-mounted into the slot on the back of the heater. Fasten two brackets to the fasteners pre-mounted in the slot. We recommend the brackets be positioned at least 6" from each other. Line up the fasteners to the holes in the bracket and screw the bracket to the fasteners (Figure 2 and 3).

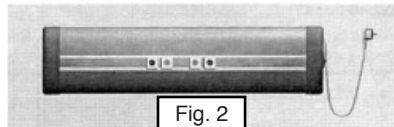


Fig. 2

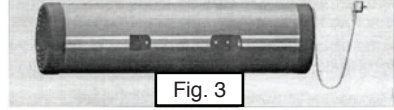


Fig. 3

3. Your heater should be mounted at least 6ft. above the ground. It should be installed at least 18" away from the ceiling or roof, and should be at least 18" from a wall or structure to the left and the right of the mounted heater.
4. Using the screws provided, screw the remaining two brackets into the wall so the protruding parts are parallel to each other (Figure 4). These parts will attach to the brackets on the back of the heater.

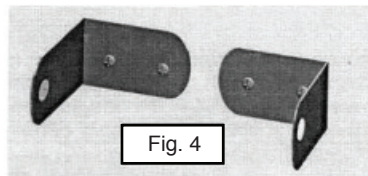


Fig. 4

5. Screw the wall brackets to the brackets on the heater, using a nut to tighten (Figure 5). Be sure to adjust the heater angle before tightening the screws so that the heat is directed to the area being heated.

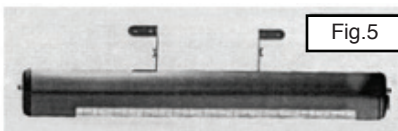


Fig. 5

Operating Instructions:

The functions of the heater may be controlled via the buttons on your remote control or the electronic control panel on the heater.

1. Plug in your heater.

2. For manual operation, press the On/Off button. For remote operation, press the function button. The digital screen should show P.0. With remote operation, the indicator light will flash three times. The heater is in standby mode.



3. For manual operation, press the On/Off button a second time. For remote operation, press the button labeled 500W. The digital screen should show P.1. With remote operation, the indicator light will again flash three times. The heater is now set on low..



4. For manual operation, press the On/Off button a third time. For remote operation, press the button labeled 1000W. The digital screen should show P.2. With remote operation, the indicator light will again flash three times. The heater is now set on medium.



5. For manual operation, press the On/Off button a fourth time. For remote operation, press the button labeled 1500W. The digital screen should show P.3. With remote operation, the indicator light will again flash three times. The heater is now set on high.



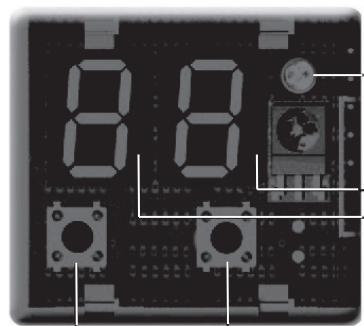
6. Following each command, the heater will emit a buzzing noise to let the user know the command has been set.



Setting the Timer:

1. Your heater can be programmed to turn off using a timer setting. The timer can be set to turn off at 1-hour intervals up to 24 hours.

Using manual controls, after you have set the heat output level (P.1-3), press the Timer button to set the timer. Using remote control, press the Timer button. The control panel will show 0.1 which means the timer is set for 1 hour. 0.2 means a two hour timer is set, etc. Keep pressing the timer button until the control panel reads the amount of hours you would like to set the timer for.



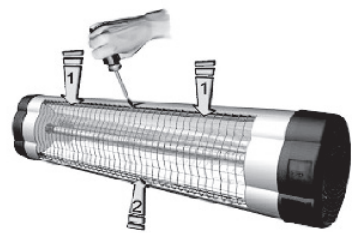
LED

Power Level Indicator

ON/OFF/
Power Mode
Button

Timer Button

1. Take off the front grid. Check the reflector and Infrared filament for dirt and dust once a month. If dirt or dust is present, clean according to instructions.



2. Inspect the wire grille, heater body, reflector, power cord and plug periodically. In case of damage or defect, consult an electrician.

Cleaning

Attention! Regular and careful cleaning will help your heater operate longer and more efficiently.

1. Unplug the power cord before cleaning your heater and make sure that the power is off for your safety.
2. Remove the wire grille using a screwdriver.
3. The reflector and filament should be cleaned with a soft cloth, a smooth brush or cool or dry air. The cloth may be damp but not too wet. Do not use chemical cleaning agents on the reflector or infrared filament.
4. Replace the wire grille.

Remote Control:



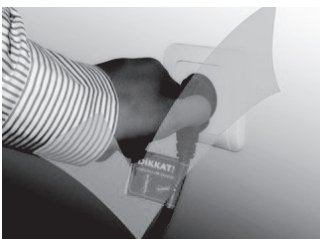
On/Off/Standby
Low
Medium
High
Timer

1. Function Button: On/Off/Standby.
2. After turning on the heater, you can choose low heating, medium or high setting by pushing the corresponding wattage button
3. Press the timer button to adjust and set the time.

CLEANING AND MAINTENANCE INSTRUCTIONS:

Maintenance

Attention! Regular and careful cleaning and maintenance will help your heater operate longer and more efficiently.



Unplug powercord



Never pull on the power cord when unplugging your heater.

Black border shows page size and should not print

LIMITED WARRANTY

This unit is guaranteed to the original retail purchaser against defects in quality or workmanship for a period of one year from the date of original purchase. If this unit fails because of a manufacturing defect within 30 days of purchase, return the unit, with your receipt, to the retailer. After 30 days, but within the warranty period, if the unit was purchased within the continental United States, return it, freight prepaid, to World and Main for repair or replacement. If the unit was purchased outside the continental United States, return the unit to the place of purchase. This warranty does not cover damage caused by misuse, abuse, overheating or alteration. Repairs made by anyone other than World and Main are not covered in this warranty. World and Main will not be held liable for any losses due to neglectful operation. All implied warranties, including the warranties of merchantability and of fitness of purpose, if applicable, are hereby limited in duration to the period of one year from the date of original retail purchase. Some states do not allow limitations on how long an implied warranty lasts, so the above limitations may not apply to you. Incidental or consequential damages arising from a breach of either express or implied warranties are hereby disclaimed and excluded. Some states do not allow the exclusion of limitation of incidental or consequential damages, so this limitation or exclusion may not apply to you. Upon the expiration of this warranty all such liability will terminate. No other warranties are expressed or implied.

This warranty gives you specific legal rights, and you may also have other rights which vary from state to state. No informal dispute settlement mechanisms are available. This limited warranty is given in lieu of all other warranties.

Manufactured for:
World and Main (Cranbury), LLC
324A Half Acre Rd.
Cranbury, NJ 08512 USA
800-221-6895
www.comfortzoneproducts.com

Rev. 110620