



Wireless Keyboard And Mouse Combo

User Manual

Product Specification

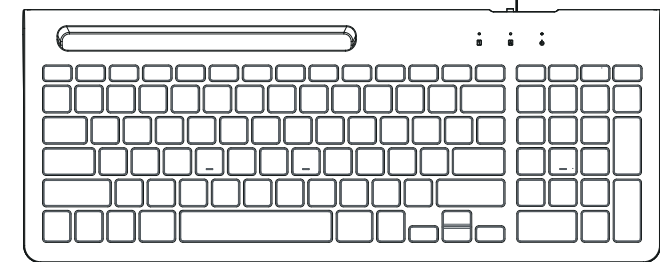
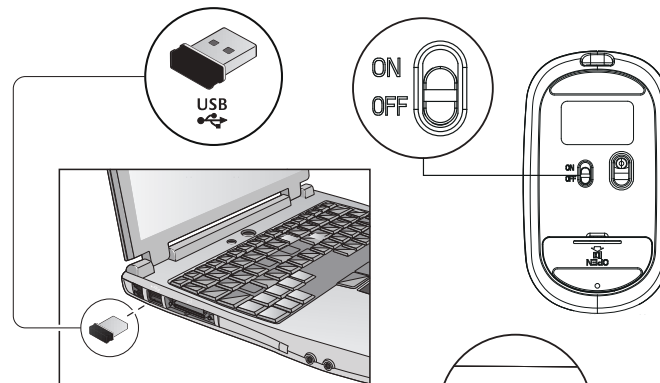
Connection:2.4G Wireless Connection
Receiver type:USB Nano Receiver
Standby hours: 900 hours
Working time: 180 hours of typing
Working distance: 10 meters from the receiver without obstruction
power: 1600mA batteries for keyboard
650mA batteries for mouse

Product introduction



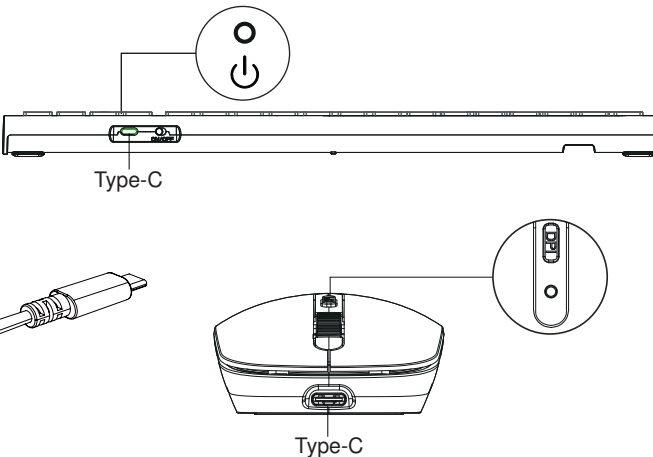
How to connect 2.4G

1. Turn on the switch and plug in receiver.
2. Press and hold the 2.4G button, LED will Flash and the devices will be in pair mode(Pair time: 20 seconds).
3. When LED turns on for 2 seconds, the connection is successful.



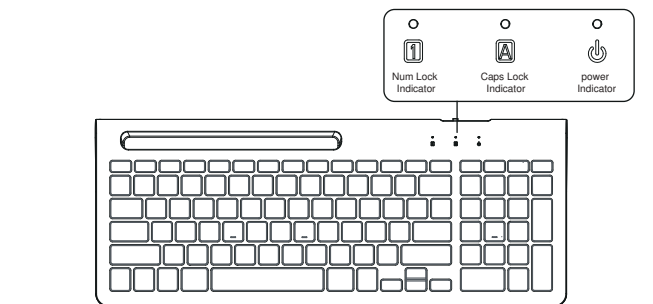
-02-

Instruction for charging



when you charge the battery, the power indicator shows constant light. When the battery is full of power, the light will turn off.

Indicator Function Instruction



-03-

FAQ:

Q1:Is this a Bluetooth or 2.4G USB wireless connection?

A1:This is a 2.4Ghz USB wireless connection, not Bluetooth.
Plug the USB Receiver into the computer/laptop USB-A port to connect.

Q2:I Can't find the USB Receiver.

A2:The USB receiver is located on the bottom of the keyboard.
Only one USB receiver is included for both keyboard and mouse.

Q3:Keyboard/Mice keys do not work correctly.

- A3:1.Charge the keyboard for 2 hours.
2.Verify the product or receiver is connected directly to the computer and not to a hub, extender, switch or something similar.
3.Unpair/repair or disconnect/reconnect hardware.
4.Try on a different USB port / computer.

Q4:Delay when typing.

- A4:1.Restart your computer.
2.Charge the keyboard for 2 hours. Low battery power can adversely affect connectivity and overall functionality.
3.Verify the product or receiver is connected directly to the computer and not to a hub, extender, switch or something similar.
4.Move the keyboard closer to the USB receiver. If your receiver is in the back of your computer, it may help to relocate the receiver to a front port. In some cases the receiver signal gets blocked by the computer case, causing a delay.
5.Keep other electrical wireless devices away from the USB receiver to avoid interferences.
6.Check if there are any updates running in the background that may cause the delay.

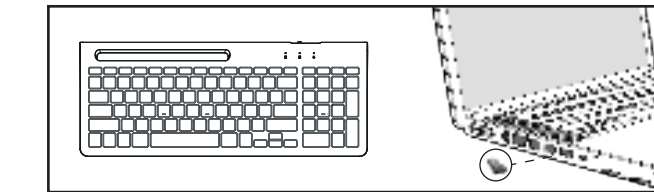
Q5:Are Keyboard and mouse rechargeable?

A5:Keyboard and Mouse are USB-C rechargeable.

-04-

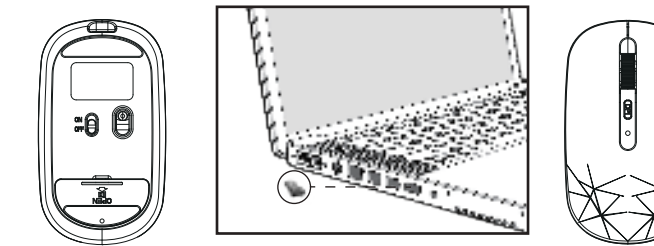
How to repair the keyboard to the USB receiver

- Step 1.Insert the USB receiver and place the keyboard as closely possible to the USB receiver.
Step 2.Press and hold the keyboard “ESC” + “=” keys together to pair again.



How to repair the mous to the USB receiver

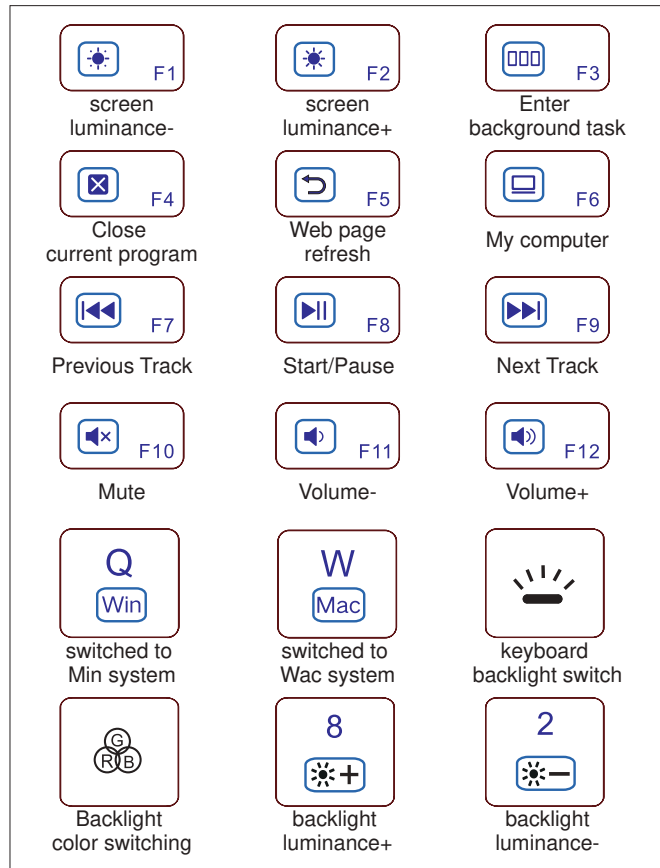
- Step1:Turn off the switch and remove the receiver, then turn switch back on and plug the receiver into the computer,for the mouse to enter a full reset.
Step2.: Press and hold the Left button and the Right button with Scroll button with together to pair again.



-05-

Instruction of the Multi-function keys

For using these multimedia functions,you need tou press and hold the button"FN" first,and then press the corresponding function button.



-06-

WARNING

Do not expose this product to water.prevent liquid from entering product.Water or humidity may cause short-circuit and damage this keyboard.
Do not drop or hit this product.Shocks may damage the components inside.
Do not put this product near extreme heat or fire.
Do not try to disassemble or modify this product on your own.

WARRANTY COVERAGE

- 1.30-day unconditional money-back guarantee.If you are not completely satisfied with this product for any reason.We will gladly refund your purchase price with in 30 days of purchase(from the date of retail purchase).
2.1-year limited warranty.ONE(1)YEAR from the date of retail purchase,if a hardware defect arises(not due to personal alterations or attempted repairs)and a valid claim is received with in the warranty period.

NOTE

- 1.The multimedia keys are for win8 and win10,for other systems,there may be no for some combie keys.

kpmare@yeah.net

We will deal with you problem as soon as possible.



-07-

This device complies with part 15 of the FCC Rules. Operation is subject to the following two conditions: (1) This device may not cause harmful interference, and (2) this device must accept any interference received, including interference that may cause undesired operation.

Any Changes or modifications not expressly approved by the party responsible for compliance could void the user's authority to operate the equipment.

Note: This equipment has been tested and found to comply with the limits for a Class B digital device, pursuant to part 15 of the FCC Rules. These limits are designed to provide reasonable protection against harmful interference in a residential installation. This equipment generates uses and can radiate radio frequency energy and, if not installed and used in accordance with the instructions, may cause harmful interference to radio communications. However, there is no guarantee that interference will not occur in a particular installation. If this equipment does cause harmful interference to radio or television reception, which can be determined by turning the equipment off and on, the user is encouraged to try to correct the interference by one or more of the following measures:

- Reorient or relocate the receiving antenna.
- Increase the separation between the equipment and receiver.
- Connect the equipment into an outlet on a circuit different from that to which the receiver is connected.
- Consult the dealer or an experienced radio/TV technician for help.

RF warning for Portable device: The device has been evaluated to meet general RF exposure requirement. The device can be used in portable exposure condition without restriction.