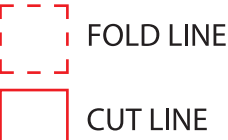


PRINT ARTWORK ON DIRECTLY ON PAPER.  
DO NOT PRINT RED FOLD AND CUT LINES. OPEN USER MANUAL DIMENSIONS: 6.46”W x 5.5” H



ijoy

## TRUE WIRELESS SPEAKER

ijoy



### USER MANUAL

Model: IJ10564-FB



The Bluetooth® word mark and logos are registered trademarks owned by Bluetooth SIG, Inc. and any use of such marks by QUEST USA CORP. is under license. Other trademarks and trade names are those of their respective owners.

Distributed by QUEST USA CORP.  
495 Flatbush Ave Brooklyn, NY 11225,USA

© GOIJOY & IJOY are registered trademarks of QUEST USA CORP. All other trademarks and trade names are property of their respective owners. Designed by GOIJOY & IJOY in New York. All rights reserved QUEST USA CORP.

Made in Vietnam.

#### •YOUR IJOY PRODUCT

Thank you for purchasing and using the IJOY TRUE WIRELESS SPEAKER. This product provides a high quality bluetooth listening experience. Before using this product, carefully read this manual to in order to operate at maximum benefit. Please ask your local dealer or call us if you have any questions.

IJOY True Wireless Speaker x 1  
Type-C Charging Cable x 1  
User Manual x 1

#### •PRODUCT SPECIFICATIONS

- OUTPUT POWER: 3W
- FREQUENCY RESPONSE: 2402~2480MHz
- SNR: ≥ 80 dB
- THD: ≤ 10%
- BATTERY: BUILT-IN 500 mAh RECHARGEABLE BATTERY
- POWER SUPPLIED: POWER ADAPTER 5.0V/1A
- LOUDSPEAKER: 2 INCH X 1(INTERNAL DIAMETER 50.8MM) MAGNETIC RESISTANT 3 OHMS.

#### •DEVICE FEATURES

- Product dimensions: 3.94”H x 8.74”W x 3.54”D (Unit: Inch)
- Bluetooth wireless stream music from any Bluetooth-enabled devices such as smartphone.
- Built-in MP3 digital decoder for decoding and playing MP3 files, bringing you the perfect sound quality.
- Includes external TF card and USB socket to enjoy music.
- Type-C 5V charging,with charging cable included.
- 500 mAh rechargeable battery.
- FM digital radio (87MHZ-108MHZ), listen to the latest news and music.
- Earbud Speaker is able to connect to any audio output equipment, such as smartphones/MP3/MP4/laptops, etc.
- To turn on speakers with TWS function, power on two speakers before connecting with Bluetooth, long press Mode button for 3 seconds until you hear an indication voice, the two speakers will be connected, then connect your phone via Bluetooth with one of the speakers and you can play music together now. To turn off TWS function, disconnect Bluetooth at first, then long press Mode button for 1 second, you will hear a voice prompt which tell you TWS is disconnected.

#### •BATTERY DISPOSAL

Please do not attempt to change the battery yourself. If the battery has died, you should follow the disposal instructions listed here. Never dispose of used batteries/electronics with ordinary solid wastes. Always dispose of used batteries/electronics in accordance with the prevailing community regulations that apply to the disposal of batteries/electronics. If there are no local regulations concerning battery/electronics disposal, please dispose of the device in a waste bin for electronic devices. Many electronics retailers now recycle batteries and other electronic components at no charge.

#### INSTRUCTIONS

- 1.) **MODE:** Short press for switching among Bluetooth, FM, AUX, TF Card and USB modes.
- 2.) **▶◀** Short press to play the previous music under Bluetooth, TF Card and USB modes. Short press to play previous radio station under FM mode. Long press to down the volume.
- 3.) **▶||** Short press for music play/pause. Long press for radio station automatic searching under FM mode.  
To answer an incoming phone call, quickly press the **▶||** button. Hold the **▶||** button to reject the call.  
To end a phone call, quickly press the **▶||** button, again.
- 4.) **⏮** Short press to play the next music under Bluetooth, TF Card and USB modes. Shortly pressing to play next radio station under FM mode. Long press to up the volume.
- 5.) **⚡** Charge Jack for built-in battery. When the DC 5V cable plugs in, the LED lights will turn on indicating that the speaker is charging.
- 6.) **ON button:** Turn the button to the up side to turn off and the lower side to turn on the speaker.
- 7.) **USB:** Supports USB and can play MP3 format music in U disk.
- 8.) **TF:** Support TF CARD and can play MP3 format music in CARD.  
(Notes: The U disk and TF card capacity should be less than 16G.)

#### •BLUETOOTH CONNECTION

Turn on the speaker or press the MODE button to enter Bluetooth mode. Find and connect “IJOY TRUE WIRELESS SPEAKER” on a Bluetooth device. Speaker will connect to the last device when it turns on next time.(Note: Each speaker can be only connected to one Bluetooth device.)

#### AUX function:

Find a AUX cable(not provided), insert the cable's AUX end to the AUX facility and enjoy your music in the AUX facility.

#### FM function:

Insert the Type-C cable in accessories to the charging port as an antenna (Do not plug the other end of the cable into the adapter or power bank.)

#### •BATTERY CAUTION

The battery used in this device may present a risk of fire, explosion or chemical burn if used incorrectly. Never use or charge the battery if it appears to be leaking, discolored, deformed, or in any way abnormal. Never disassemble the unit or attempt to remove the battery as that could cause leakage of alkaline solution or other electrolytic substance. Never expose the battery to any liquid. Never expose the battery to excessive heat such as direct light or fire. Always keep the battery out of reach of infants and small children.

#### •OTHER IMPORTANT SAFETY INFORMATION

Disposal of old electronic equipment (Applicable in the European Union and other European Counties with separate collection systems)The trash can symbol (seen on the bottom) on the production indicates that this product shall not be treated as household waste. Instead it shall be handed over to the applicable collection point for recycling of electronic equipment. By ensuring this product is disposed of correctly, you will help prevent potential negative consequences for the environment and human health, which could otherwise be caused by inappropriate waste handling. For more detailed information about this product, please contact your local household waste disposal service or the shop where you purchased this item.

#### •WARNING

1. Do not squeeze or collide.
2. Do not disassemble or put into the fire, water, to avoid causing short circuit leakage.
3. Do not use the wireless charger in severe high temperature, wet or corrosive environment to avoid leakage of damaged circuit.
4. Do not place too close to the magnetic stripe or chip magnetic card (ID card, bank card, etc.), to avoid causing magnetic card failure.
5. Please keep the distance between the implanted medical device (pacemakers, cochlear implants, etc.) and the wireless charger at least 20cm to avoid potential devices for the medical device.
6. Children should be watched after to ensure that they don't play with the wireless charger as toys to avoid unnecessary accidents.
7. Please keep the charger and receiver away from water and other liquids.
8. To clean the charger, ensure that the power supply is disconnected.
9. Use the ambient temperature maintained at 0-45°C.



#### IMPORTANT REMINDERS

This device can ONLY be charged by 5V adapters/USB ports only. Quick charging devices over 5V may cause heat and fire.

#### •FCC ID STATEMENT

FCC ID: 2AJQ7MEGAPOD1

This device complies with part 15 of the FCC Rules. Operation is subject to the following two conditions:

- (1) This device may not cause harmful interference, and
  - (2) This device must accept any interference received, including interference that may cause undesired operation.
- Warning: Changes or modifications not expressly approved by the party responsible for compliance could void the user's authority to operate the equipment.

NOTE: This equipment has been tested and found to comply with the limits for a Class B digital device, pursuant to Part 15 of the FCC Rules. These limits are designed to provide reasonable protection against harmful interference in a residential installation. This equipment generates uses and can radiate radio frequency energy and, if not installed and used in accordance with the instructions, may cause harmful interference to radio communications. However, there is no guarantee that interference will not occur in a particular installation. If this equipment does cause harmful interference to radio or television reception, which can be determined by turning the equipment off and on, the user is encouraged to try to correct the interference by one or more of the following measures:

Reorient or relocate the receiving antenna.  
Increase the separation between the equipment and receiver. Connect the equipment into an outlet on a circuit different from that to which the receiver is connected.  
Consult the dealer or an experienced radio/TV technician for help.

RF warning statement:  
The device has been evaluated to meet general RF exposure requirement. The device can be used in portable exposure condition without restriction.