

Quick Start Guide

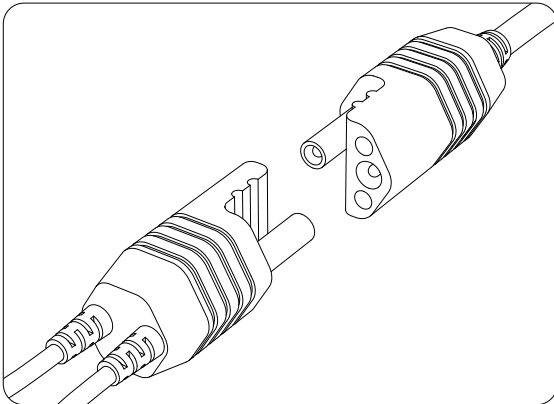
V500 Pro Auto Intelligent Circuit Tester Breaker Finder Tool



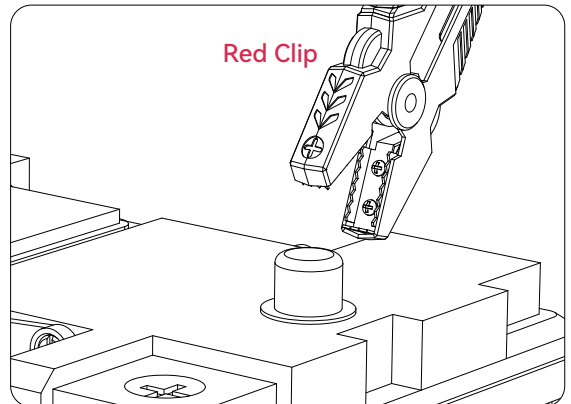
IMPORTANT: Before using this device, please read the precautions in this operating guide and the user manual. If any personal loss is caused by improper operation, the warranty may become void.

Note: If you have any questions or need assistance, please contact our support team support@vdiagtool.com.

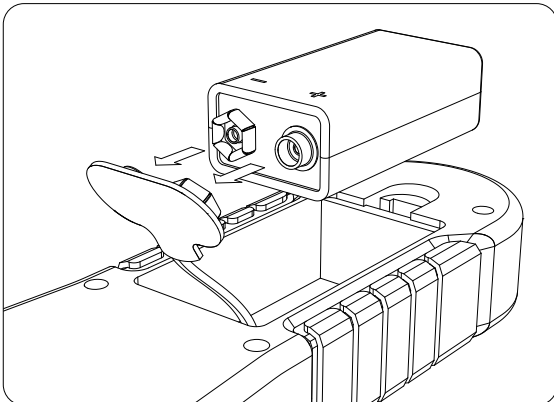
GETTING STARTED



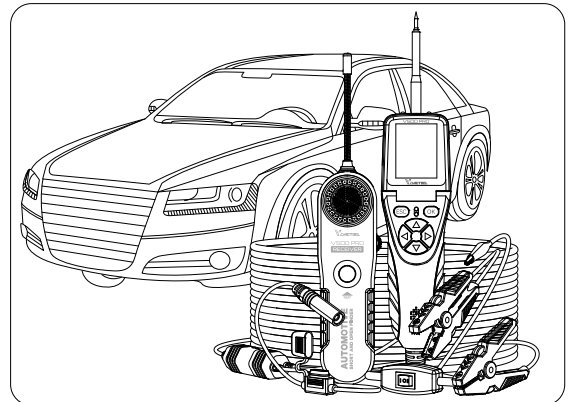
Step 1: Connect the connector on the clip cable to the main unit.



Step 2: Connect clips to the car battery (red clip for positive pole, black clip for negative pole)

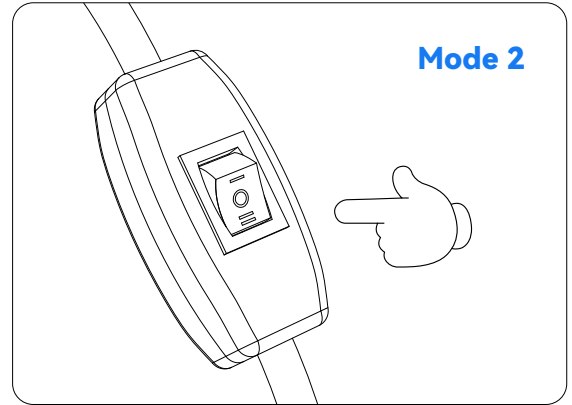
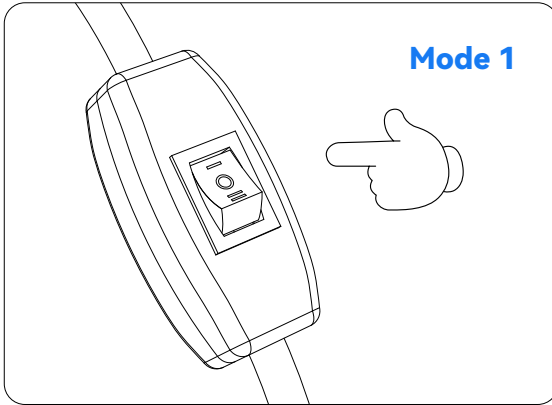


Step 3: Install a 9V battery into the Breaker Finder.



Step 4: Your device is now ready for use.

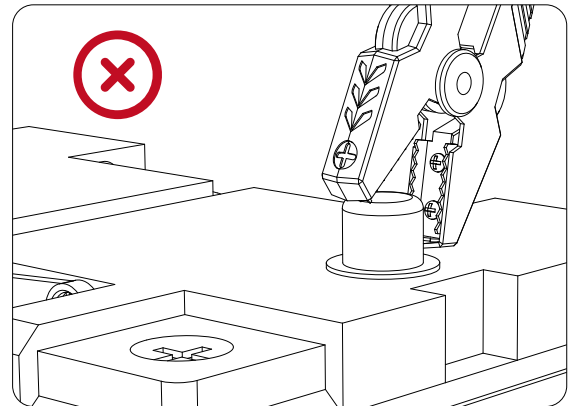
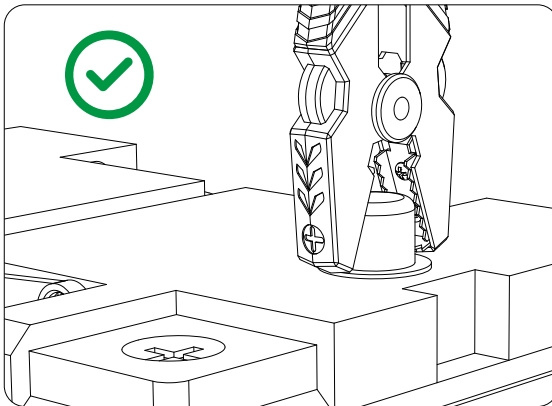
DEVICE KNOWLEDGE



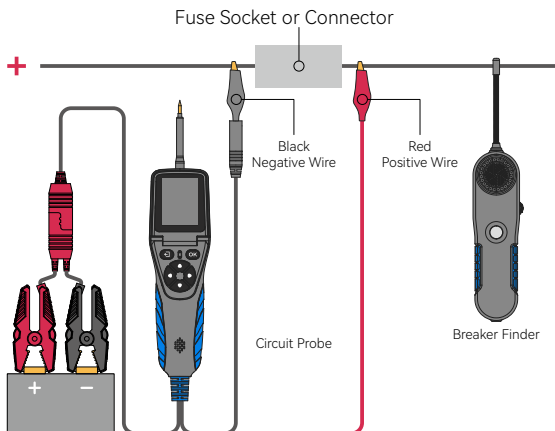
Ensure the Device is Functioning Correctly: Press the switch button to the working mode you want.



Note: Please ensure the button has been pressed. When pressed upwards, it activates Mode 1, and when pressed downwards, it switches to Mode 2."



Mode 1(Main Unit), it is mainly used to test voltage, resistance, positive and negative poles, etc. In this mode, please make sure the battery clips are firmly attached and make maximum contact with the battery pole, not just a small area at the tip. This will help ensure a stable power supply from the battery.



Mode 2(Breaker Finder), it is mainly used to find open circuit, short circuit, etc. After switching to Mode 2, it is normal that the main unit screen does not light up. In this mode, please make sure the breaker finder has fresh battery installed and the right dial is set to the maximum. In addition, make sure the red and black clips are correctly clamped on the wire to be tested, as shown in the figure.



Note: If the device is connected correctly and there is no sound from the breaker finder, you can just use the breaker finder close to the wall switch or other wires. If there is still no sound, the device is most likely broken. In this case, please contact our support team at support@vdiagtool.com for solutions.

ACCESSORIES

- **1 × Probe Tip:** Contact the circuit or component for testing
- **1 × Fine Probe Tip:** Used to test plugs or pins in the car's circuits
- **1 × Probe Tip Extension Cable:** Extends the reach of the probe for testing in distant or confined spaces
- **2 × Wire Piercing Probe:** Piercing wire insulation for electrical measurements without damaging the wire, providing a clearer understanding of the car's circuits
- **2 × Banana to Banana Plug Test Lead:** An adapter and extension cable used to connect devices with banana plug connectors
- **3 × Fuse:** Protect the device from damage due to overload
- **1 × Relay Test Cable:** Used to test the functionality of relays
- **1 × Alligator Battery Clip:** Secures connections to battery terminals for testing

CONTACT US

After-Sales Services & Tech Support:

support@vdiagtool.com

Headquarter Address:

Room 601, Block A, Zaoan Bussiness Building, Shigu Road, Xili Residential District, Nanshan District, Shenzhen

Official Website:

www.vdiagtool.com

For Wholesale Business or Become Our Distributors:

sales@vdiagtool.com

Share Us with Your Friends and Join Our Community for Tutorials, Support, and More.

Scan the QR Code Below to Subscribe to Our Social Media:



Facebook Page:

<https://www.facebook.com/profile.php?id=61550760872613>

Facebook User Group:

<https://www.facebook.com/groups/1278852129665315>

Instagram:

https://www.instagram.com/vdiagtool_official

X:

<https://twitter.com/VdiagTool>

TikTok:

https://www.tiktok.com/@vdiagtool_official

YouTube:

<https://www.youtube.com/@VdiagTool12>

Reddit:

<https://www.reddit.com/r/vdiagtool/>

Invent with Us: Test Our New Products Before They Hit the Market and Help Us Create Better Solutions for Everyone:

inventers@vdiagtool.com

Create Social Media Content, Post Online, and Support Our Community:

marketing@vdiagtool.com

Shenzhen VDIAGTOOL Technology Co. Ltd Copyright ©vdiagtool.com. All Rights Reserved

