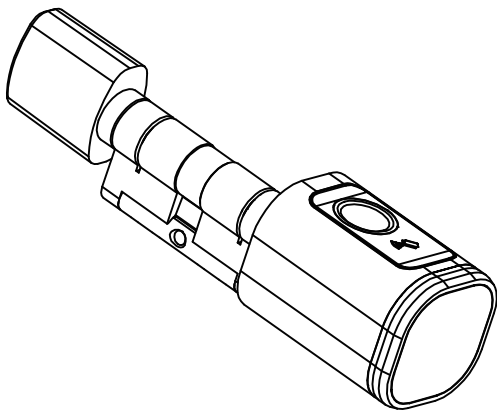


AG-L31

KEYLESS CYLINDER SMART LOCK

User Manual



V1.1

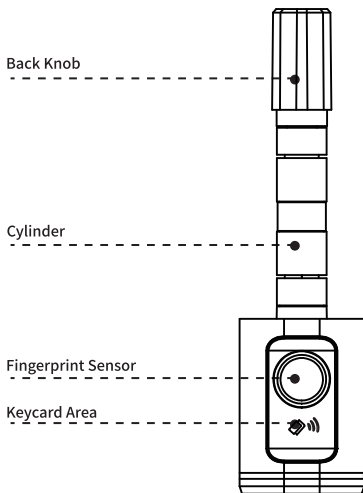
1 Packing Accessories

please check the packing box and accessories when you got the item in hand.

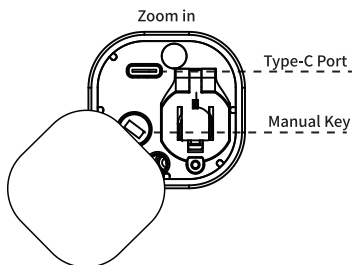


Smart Lock Epoxy Card Reset Card Manual Key Sucker Tool Manual

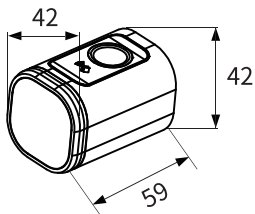
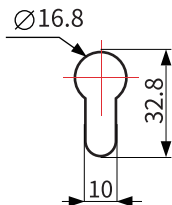
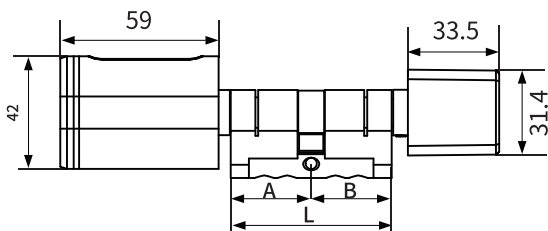
2 Product Specification



3 Reader View

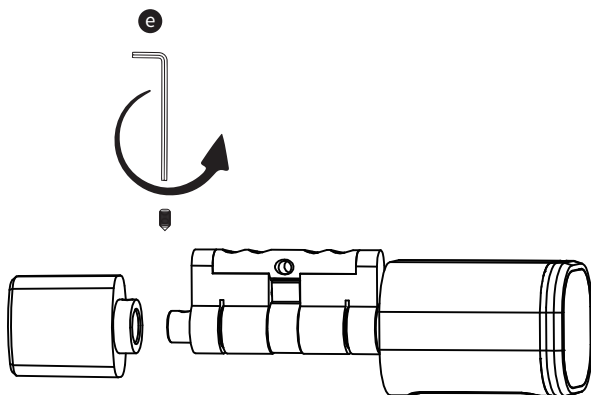


4 Dimension



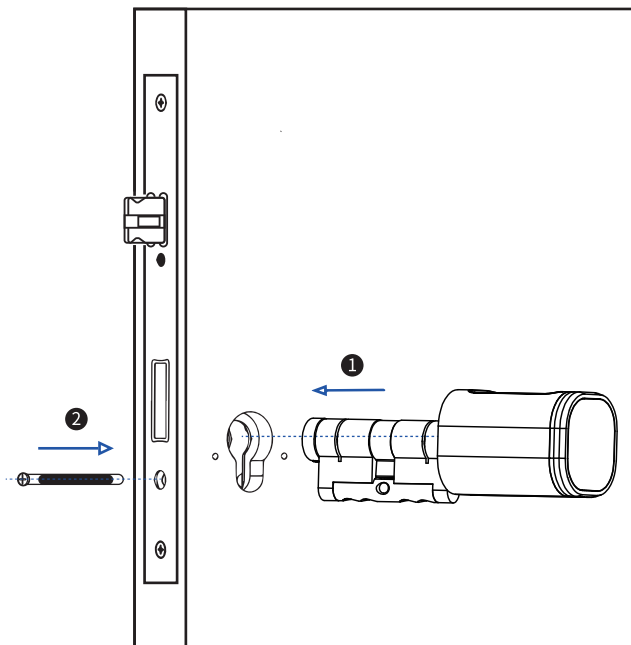
5 INSTALLATION STEPS

5.1 Please use the screw driver to take off the screw on the back knob position, refer the below Pic.1:



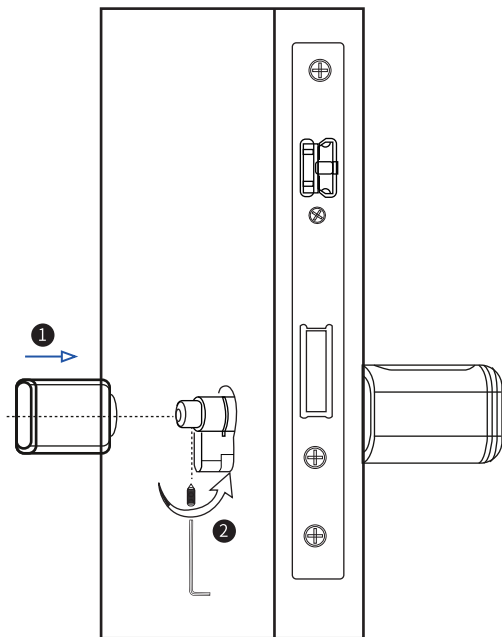
Pic.1

5.2 Please insert the cylinder to the existed lock and fix the cylinder with the long screw as picture 2.

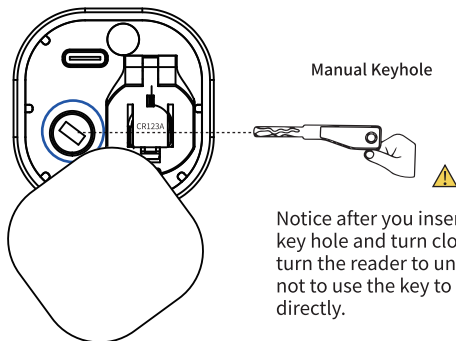
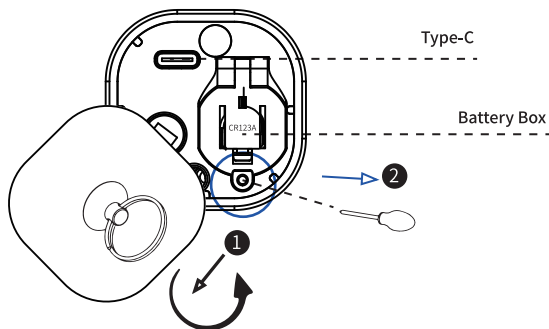


Pic.2

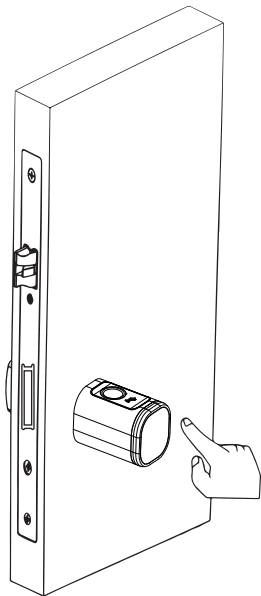
5.3 Please use the screw driver to fasten the screw on the back knob position, refer the below picture 3:



5.4 Please take off the reader cover with the magnet or sucker (included in our accessories bag), assemble 1xCR123a alkaline battery, refer the below picture 4:

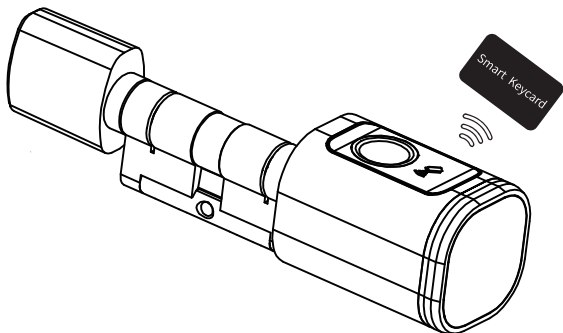


5.5 Please test with your fingerprint under the factory state,
any fingerprint will unlock the door lock, refer the below picture 5:



Pic.5

5.6 Please test the lock with key card after you configure the lock with Tuya smart APP(Refer the Part 6).



Notice the keycard or fingerprint can only be enrolled by the Tuya smart APP, so it is important to install this app in your mobile before start daily use.



6 Tuyas APP Settings

Please download the Tuyas smart or Smart life on Apple store or Google play. also you can scan the QR code below to download the APP directly.



6.1 Please register one account with your E-mail or mobile number.



6.1.1 Sign Up



6.1.2 Enter mobile or mail
Get Verification Code



6.1.3 Enter the code sent
to your mail or mobile



6.1.4 Set password and login

6.2 Intelligent Configuration

Please run the Tuya smart APP and click "Add Device" on the right top position for auto scan:



Step 1
Add Device



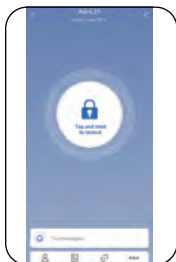
Step 2
Activate the lock
Click "Add"



Step 3
Done

6.3 Function Description

Under Tuya smart APP interface, you can see the features for the smart locks, such as Member /unlock records and settings etc.

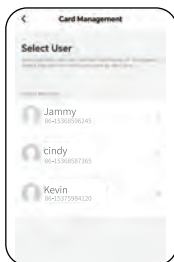


6.4 Add User Fingerprint

Under Tuya smart APP setting, you can click the fingerprint management and add the fingerprint.



Step1:
Click Add Fingerprint



Step2 Select User



Step3:
Start Capturing



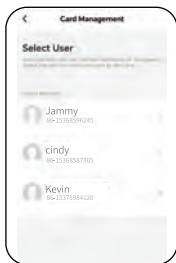
Step 4:
5 Times and done

6.5 Add User Card

Under Tuya smart APP setting, you can click the card Management and add the card



Step1:
Click Add Card



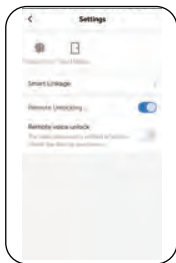
Step2:
Select User



Step3:
Tap Card on the lock
induction area

6.6 Smart Linkage and Settings

Under the settings, you can click the smart linkage for more scene and more options for the features upon the using condition.



6.7 Passage Mode

Under Tuya smart APP setting, you can disable "automatic lock switch", under this setting the lock will be in always open state, you can press any valid fingerprint to cancel this passage mode.



7 Reset the Lock

Under Tuya smart APP setting, you can click the "**Remove Device**" to reset the lock and the lock will be set to factory state, you can use any fingerprint to unlock the lock.



8 Main technical specifications

Reader Dimension:	42x42mm
Power Source:	1xCR123A(Alkaline)
Material:	Aluminum Alloy/Brass
Installation:	Intermediate; Tools required(included)
Unlock Way:	App,Fingerprint,Keycard,Manual key
IP Class:	IP5x(Dust and Splash Proof)
Emergency Power:	1x Micro Type-C charging port
Door Thickness:	35-45mm

9 General Troubleshooting

General Trouble	PossibleReason	Solution
Unable to unlock, indicator light not on	Lithium battery power depleted	Replace the CR123A lithium battery
APP unable to add smart lock	Mobile Bluetooth is too far away from the smart lock	Mobile phone close to smart lock add again
Fingerprint and IC card unable to unlock	Fingerprint, IC not entered or failed to enter	Enter the fingerprint again through the app
If the fingerprint is not released after unlocking, the smart lock cylinder cannot automatically lock	Abnormal use of external forces, Causing abnormal door lock	Unlock the fingerprint once again
The red indicator light flashes 5 times	Low battery alarm	Replace the battery or charge it

10 Sales and Service Terms

- Please read the manual carefully before use!
- Limited 1-year Electronic Warranty Limited Lifetime Mechanical and Finish Warranty
- This L31 product comes with a 1-year Limited Warranty on Electronic Parts and a Limited lifetime. Mechanical and Finish Warranty against defects in materials and workmanship under normal use to the original residential user. Proof of purchase and ownership is required for the warranty to be in effect.
- Any error or question in our manual or sales term, please feel free to contact with us.
- For any wrong operation or installation to the user, we do not responsible for the duty.
- For the damage caused by anthropic factor or inevitable reason, we do not pay for the loss or maintain for free, please check our after sale service terms.
- Please do not take apart the lock if you are not technician, if necessary, please make the operations under the guide of technician.
- Notice: there maybe a little difference for product pictures with real product, please subject to our real products.

FCC Warning

This device complies with Part 15 of the FCC Rules. Operation is subject to the following two conditions:

(1) This device may not cause harmful interference, and (2) this device must accept any interference received, including interference that may cause undesired operation.

NOTE 1: This equipment has been tested and found to comply with the limits for a Class B digital device, pursuant to part 15 of the FCC Rules. These limits are designed to provide reasonable protection against harmful interference in a residential installation. This equipment generates, uses and can radiate radio frequency energy and, if not installed and used in accordance with the instructions, may cause harmful interference to radio communications. However, there is no guarantee that interference will not occur in a particular installation. If this equipment does cause harmful interference to radio or television reception, which can be determined by turning the equipment off and on, the user is encouraged to try to correct the interference by one or more of the following measures:

- Reorient or relocate the receiving antenna.
- Increase the separation between the equipment and receiver.
- Connect the equipment into an outlet on a circuit different from that to which the receiver is connected.
- Consult the dealer or an experienced radio/TV technician for help.

NOTE 2: Any changes or modifications to this unit not expressly approved by the party responsible for compliance could void the user's authority to operate the equipment.

RF Exposure Statement

To maintain compliance with FCC'S RF Exposure guidelines, This equipment should be installed and operated with minimum distance of 20cm between the radiator your body. This device and its antenna(s) must not be co-located or operation in conjunction with any other antenna or transmitter.