



2515 Bypass Rd. Flemingsburg, KY 41041
606-845-7439

Instructions for Installation and Care of CF Moto U-Force 1000

Full Polycarbonate Rear Window

CF-U-1000-RW02 / 50-40064

NOTICE: Please check contents of package for any damage and make sure all parts fit correctly and you are happy with the product before removing protective film. Once the film is removed you cannot return the product for a full refund.

1. Check over the parts included in the cartons with the parts list shown below:

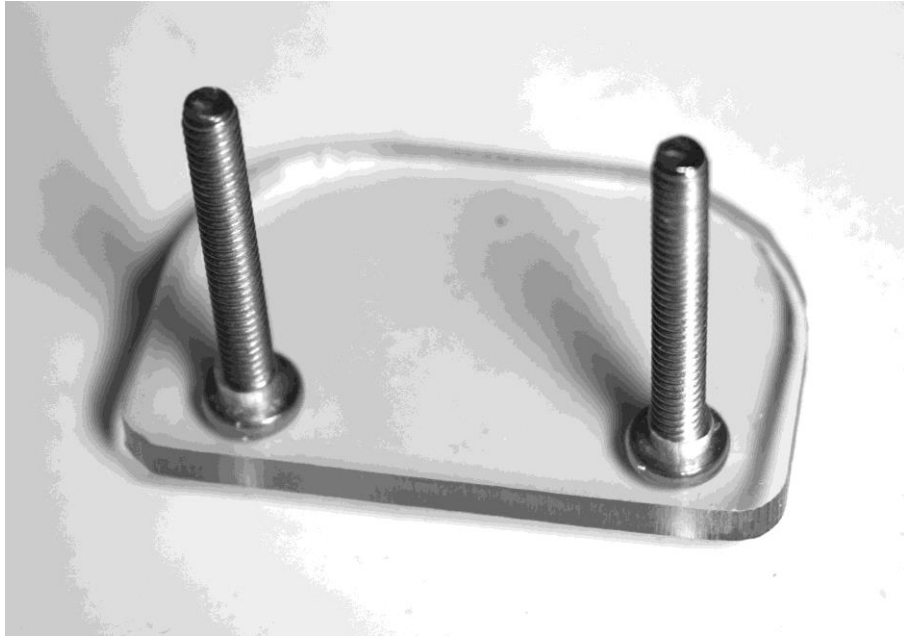
2" Stainless Bolts	8 each
1 1/4" Stainless Bolts	6 each
5/8" White Nylon Spacers	16 each
Metal Brackets	2 each
White Nylon Washers	4 each
Lock Nuts	12 each
Thumb Nuts	2 each
Large Polycarbonate Pieces	6 each
54" Adhesive Rubber Padding 1/2" Wide	1 each
22" Adhesive Rubber Padding 1/2" Wide	2 each
54" Adhesive Rubber Padding 1 1/2" Wide	1 each
Rear Window	1 each

If any parts are damaged or missing please contact customer service at (606) 845-7439.

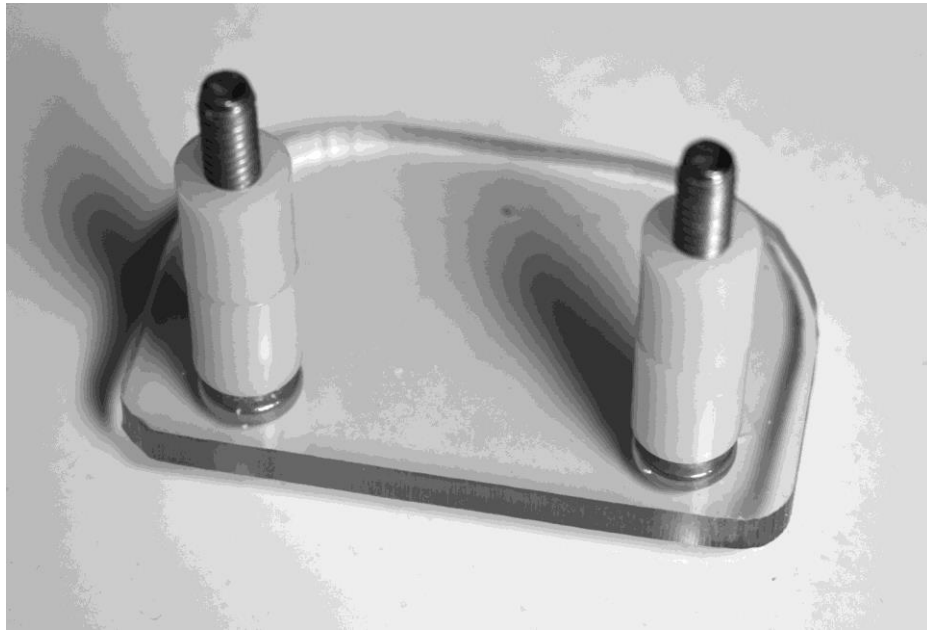
2. Start by pulling it out of the box; find a clean area to lay it down and install the hardware.
3. Begin attaching the two bottom brackets before you put the window on the U-Force. These brackets are made up from several different parts that must be put together first. Below is a picture of the parts needed to make the bracket.



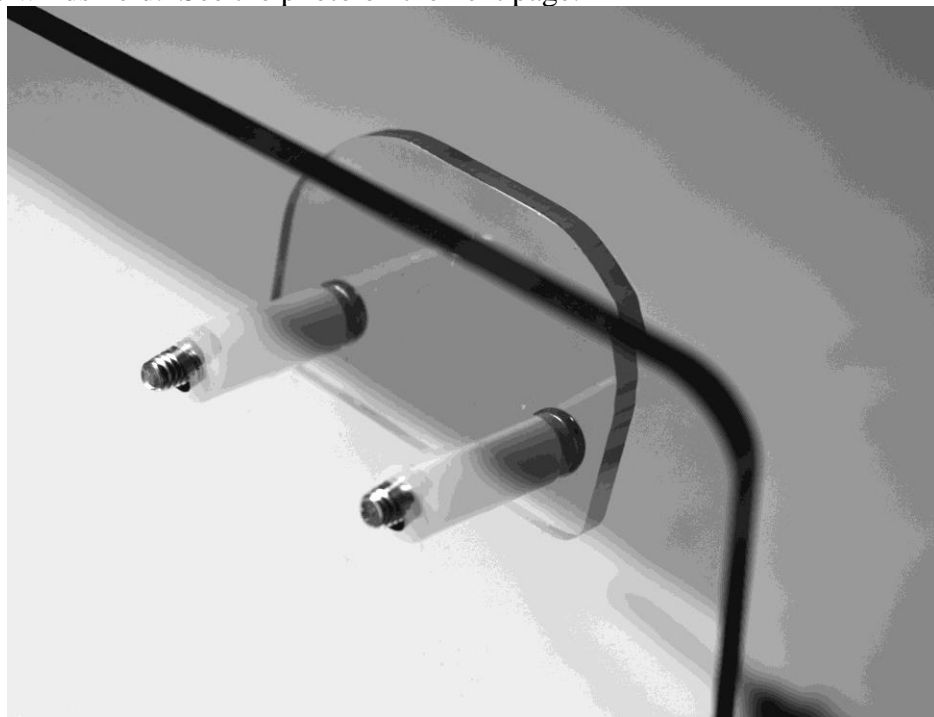
4. Take the 2" bolts and run them through the polycarbonate pieces as shown in the photo below. Do this four times.



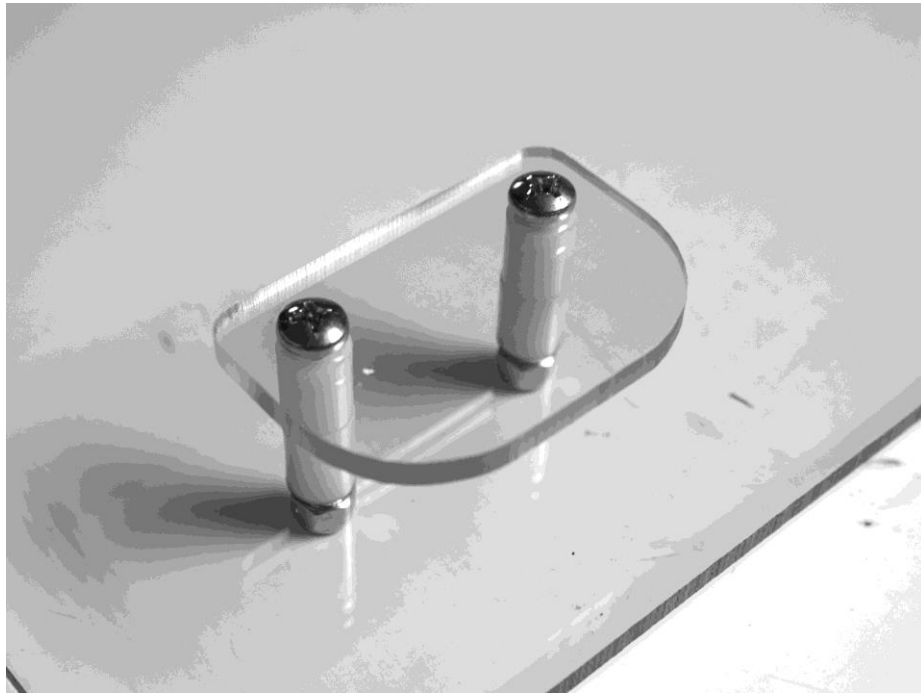
5. Then take the nylon spacers and put 2 of them on the bolts as shown in the photo below.



6. Now take the plates and spacers and insert them into the holes along the bottom so that the plates are on the inside of the windshield. See the photo on the next page.



7. Now secure them in place with a lock nut on the front side of the Rear Window as shown in the photo below

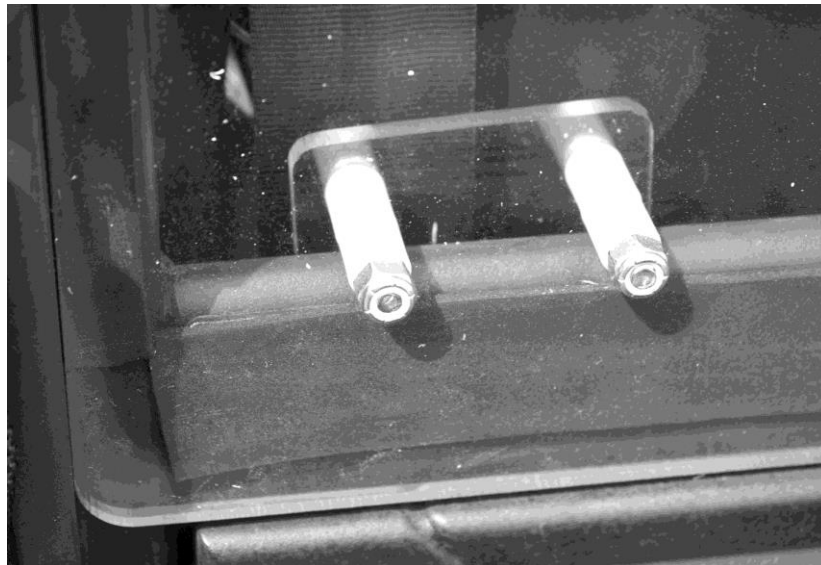


8. Before placing the Rear Window on the vehicle take the adhesive rubber padding and install it around the perimeter of the Frame that will hold the window in place. The 1" wide pieces go on the top and sides while the 1 1/2" strip goes across the bottom as shown in the pictures below.

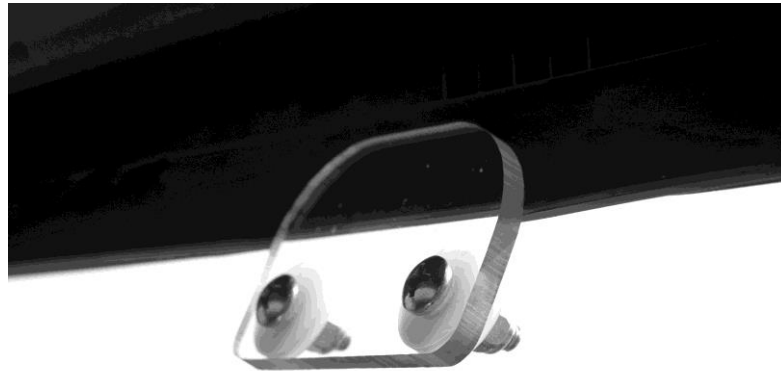
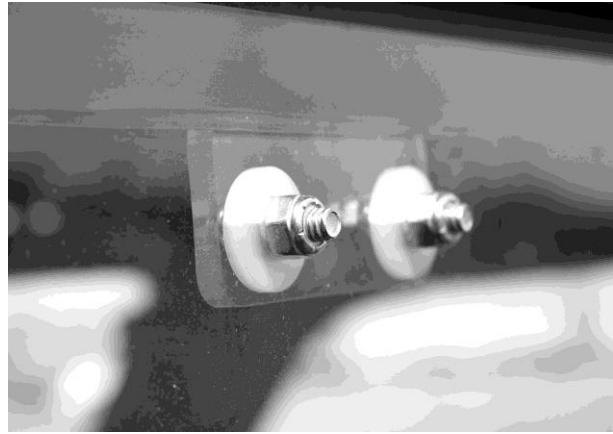
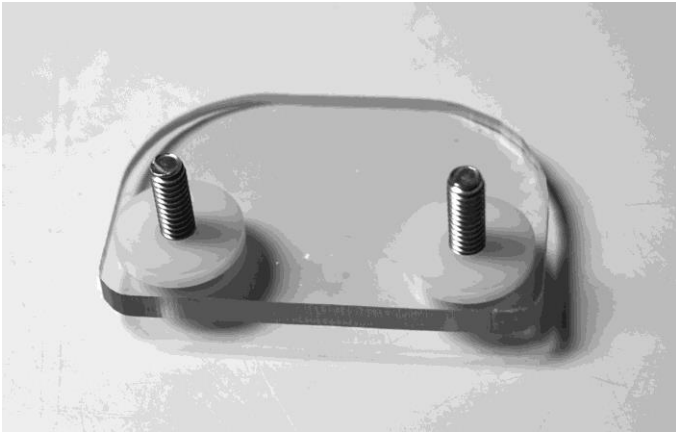




9. Now that the padding and bottom brackets are in place it's time to place the Rear Window in place on the vehicle. The brackets are designed to hold the window in place along the bottom of the frame in behind the seats as shown in the photo below.



10. Once the Rear Window is in place and properly centered on the vehicle the final step is to install the brackets across the top of the window to secure it in place. This is done the same as the bottom brackets except you use the white nylon washers and 1 1/4" bolts. See photos below.



11. On the sides you will use the metal brackets. Take a 1 1/4" bolt and run them through the bracket and then through the slot along the sides from the inside out. Then screw on a thumbnut on the outside and tighten down. See photos below.



12. Enjoy, and remember- when cleaning the rear window do so gently at first with warm water and mild detergent to dislodge any grit that may scratch the Polycarbonate. After rinsing and drying with a soft cloth, you may then polish the windshield with an appropriate commercially available plastic polish, also available from Falcon Ridge. This will ensure many seasons of clarity and keep scratching and swirling to a minimum. Never use cleaners such as Windex that contain ammonia as doing so may adversely affect the rear window.

Thank you for your purchase!

Warranty

To The Owner of this Product:

Thank you for purchasing one of our Falcon Ridge Cab Enclosures, Tops &/or Windshields! Below are the terms under which your product is covered under our manufacturer's warranty.

30 Day Warranty which includes and is not limited to replacing the enclosure, tops and/or windshield due to defect of the product. Please refer to the return policy in this case for more information.

1 Year Warranty includes any defect in material or workmanship within this time frame we will gladly correct the problem or replace the enclosure, tops &/or windshield. Upon submitting for the correction or replacement we will need to receive pictures of the defect in material or workmanship along with the receipt from the date of purchase.