



MAHC-I COMMERCIAL SERIES

Streamline Design, Installation, and Plan Approval

The MAHC-I Series are VGB Unblockable drains for replacement and new construction. The modular grates and supports are a direct replacement for existing 18" x 36", 54", and 72" drain grates. The series consists of a base kit 18" wide by 36" long that is expandable in 9" increments to accommodate even larger sizes.

The MAHC-I 18" x 36" stainless steel sumps are OEM, manufactured sumps, certified by UL in conformity with ANSI/APSP-16 2011. Configurable for any floor thickness, pipe size, or combination of pipe sizes from 2" to 12". No additional VGB Act compliance engineering required. Each includes an integrated water-stop with tie-wire holes that are angled up to trap water and help prevent concrete voids.

The Click-It™ frame and grate modular design is compact, easy to handle, and takes up far less shelf space than required by traditional drain designs. Plus there is no limit to the length, giving the Registered Design Professional ultimate engineering flexibility.



For more information, please call
877-768-2717 or visit
www.aquastarpoolproducts.com



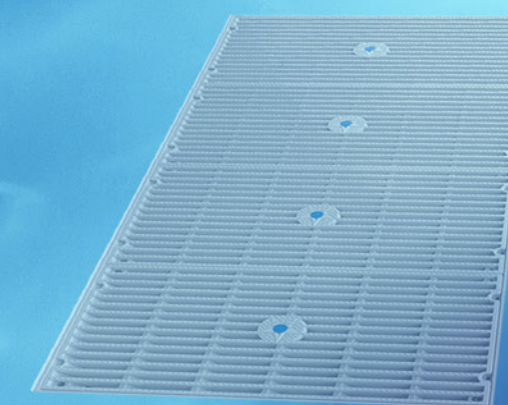
info@aquastarpoolproducts.com
877.768.2717 FAX: 877.276.Pool (7665)
www.aquastarpoolproducts.com

U.S. and Foreign patents pending - Printed in the U.S. - 021319



MAHC-I Commercial Series™ VGB Unblockable Drains

Streamlines Design, Installation, and Plan Approval





MAHC-I Series 18" x 36" Stainless Steel Sump with Four 9" x 18" Anti-Entrapment Suction Outlet Covers



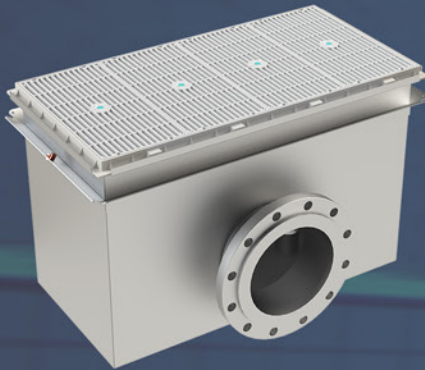
VGB CERTIFIED
SPECIFICATIONS

Floor Flow Rating
2,275 GPM at 2.0

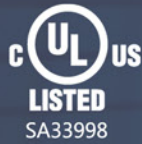
Wall Flow Rating
2,275 GPM at 2.0

Sump Depth
6" minimum

Open Area
358 in²



- Configurable 316 stainless steel sumps simplify compliance with the Model Aquatic Health Code, the International Swimming Pool and Spa Code, and the latest revisions to ANSI/APSP-16 2011
- Integrated water stop with rebar leveling guides and tie-wire holes
- Frame and grate manufactured from a superior UV-resistant PVC polymer
- Replace 9" x 18" grates and supports every ten years from the date of installation
- Includes the MAHC-I Series modular frame and grate system, boxed separately for installation with the final finish
- 316 Stainless steel screws, with brass inserts
- 316 Stainless Steel Sump with bonding lug for NEC Article 680.26 (B)(3)
- Online product support including downloadable CAD files, General Certificate of Conformity, high-resolution product images, installation instructions and more



BENEFIT OF CHOOSING MAHC-I COMMERCIAL SERIES DRAINS

Streamlines Design

- MAHC-I has no limit to its length giving the Registered Design Professional ultimate engineering flexibility.
- CAD files available for 18" x 36" base kit, expansions, and standard stainless steel sumps.

Streamlines Installation

- MAHC-I new construction drain covers feature a unique "Click-it" frame and modular grate design that is compact, easy to handle, and takes up far less shelf space than required by traditional drain designs.
- Retro-fits are designed to replace Lawson 18" x 36", 18" x 54", and 18" x 72" covers.

Streamlines Plan Approval

- All 18" x 36" drain cover models are UL Certified, Listed and Labeled.
- MAHC-I 18" x 36" stainless steel sumps are ANSI/APSP-16 2011 third-party certified, ready for permitting and inspection.

MAHC-I Series Custom and Quick Order Forms

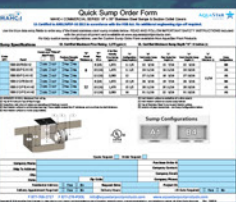
Fully custom sump configurations can be made to order. Turn-key auto-calculating custom and quick order forms are available online.

To find these order forms and more please visit www.aquastarpoolproducts.com.

Custom Form



Quick Form



MAHC-I Series Port Configurations

Pictured below are all port configurations that are available. Our sumps feature 2" to 12" Class 150 flange style pipe connections located on the side, end, or bottom, and can be created with sump depths for 6" to 22" thick shell, allowing for the smallest sumps possible, reducing dig, steel, concrete and pipe fitting costs.

One Side Connection
(For 2" to 12" pipe)



One End Connection
(For 2" to 12" pipe)



One Bottom / Back Connection
(For 2" to 12" pipe)



Two Opposite Side Connections
(For 2" to 8" pipe)



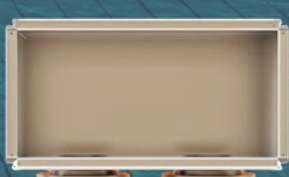
Two End Connections
(For 2" to 8" pipe)



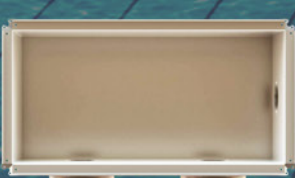
Two Bottom Connections
(For 2" to 8" pipe)



Two Same Side Connections
(For 2" to 8" pipe)



Two Same Side and Right End Connections
(For 2" to 6" pipe)



Two Same Side and Left End Connections
(For 2" to 6" pipe)



Two End and Two Same Side Connections
(For 2" to 6" pipe)



Two End and Two Opposite Side Connections
(For 2" to 6" pipe)



Two End, Two Same and One Opposite Side Connections
(For 2" to 4" pipe)



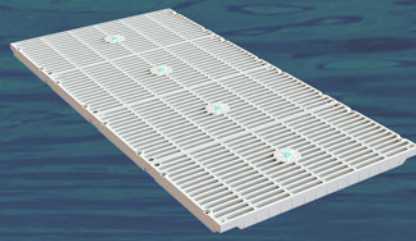
Two End, Two Same and Two Opposite Side Connections
(For 2" to 4" pipe)

MAHC-I Series 18" x 36" with Four 9" x 18" Retrofit Anti-Entrapment Suction Outlet Covers and Expansion Kit



Retrofit Base Kit

Fits: Lawson Aquatics 18" x 36"



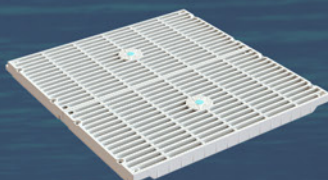
Model # R1836xxx

- White - R1836101
- Medium Gray- R1836117

Retrofit Expansion Kit

Fits: Lawson Aquatics 18" x 54", Qty 1
Lawson Aquatics 18" x 72", Qty 2

Must be installed in conjunction with base kit, R1836xxx, sold separately



Model # R1836Exxx

- White - R1836E101
- Medium Gray- R1836E117

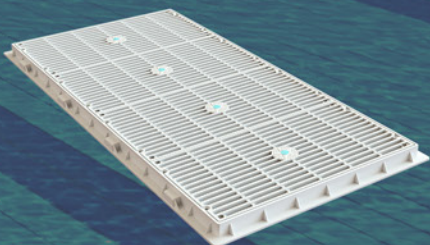
MAHC-I Series 18" x 36" with Four 9" x 18" Anti-Entrapment Suction Outlet Covers, Expandable Mud Frame, and Expansion Kit



New Construction Base Kit

Fits: Lawson Aquatics 18" x 54", Qty 1
Lawson Aquatics 18" x 72", Qty 2

Must be installed in conjunction with base kit, 1836xxx, sold separately



Model # 1836xxx

- White - 1836101
- Medium Gray- 1836117



Model # 1836Exxx

- White - 1836E101
- Medium Gray- 1836E117



MAHC-I Series Flow Rates

Suction Outlet Fitting Assembly Size	18x36 [†]	18x45 [†]	18x54 [†]	18x63 [†]	18x72 [†]	18x81 [†]	18x90 [†]
Tested and UL Certified Flow Rating per ANSI/APSP-16 2011	2,275	-	-	-	-	-	-
Calculated Flow Rating per ANSI/APSP-16 2011 §2.3.1	-	2,092	2,510	2,929	3,347	3,766	4,184
Calculated Flow Rating per ANSI/APSP/ICC-16 2017 §3.9.1	-	1,056	1,474	1,893	2,311	2,729	3,148

* Certified by UL, no additional engineering required. Minimum sump depth, 6" to nearest pipe opening.

[†] Certified cover and mounting hardware; additional engineering required for sumps larger than 18" x 36". Minimum 6" sump floor and pipe opening depth.