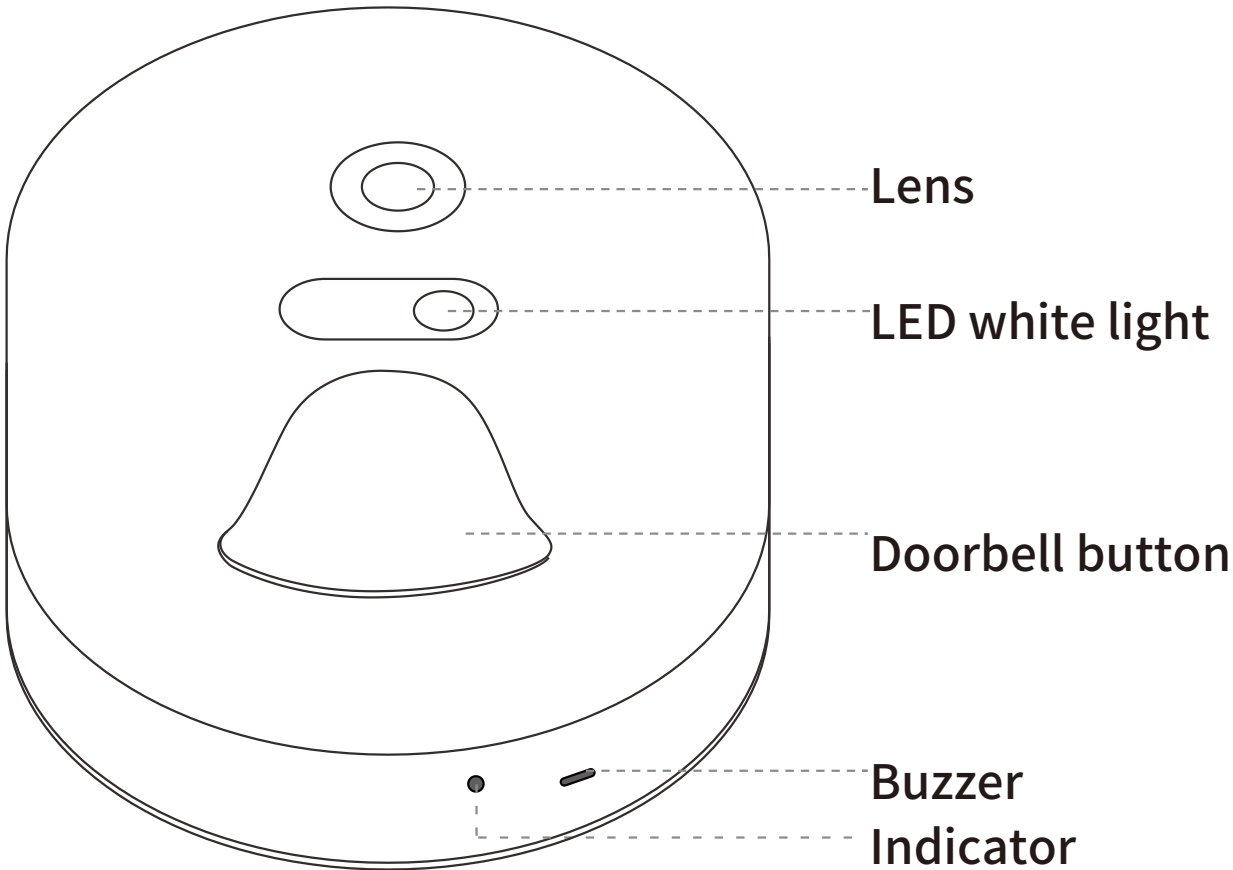




## Smart Doorcam user manual

# 1 Product description



Picture resolution: 480 × 272

Transmission distance: 30 meters

Image sensor: 1/4 CMOS

Night vision mode: 1pc white light

Lens: 80°, F2.8 aperture

Power supply: 2pcs AAA batteries

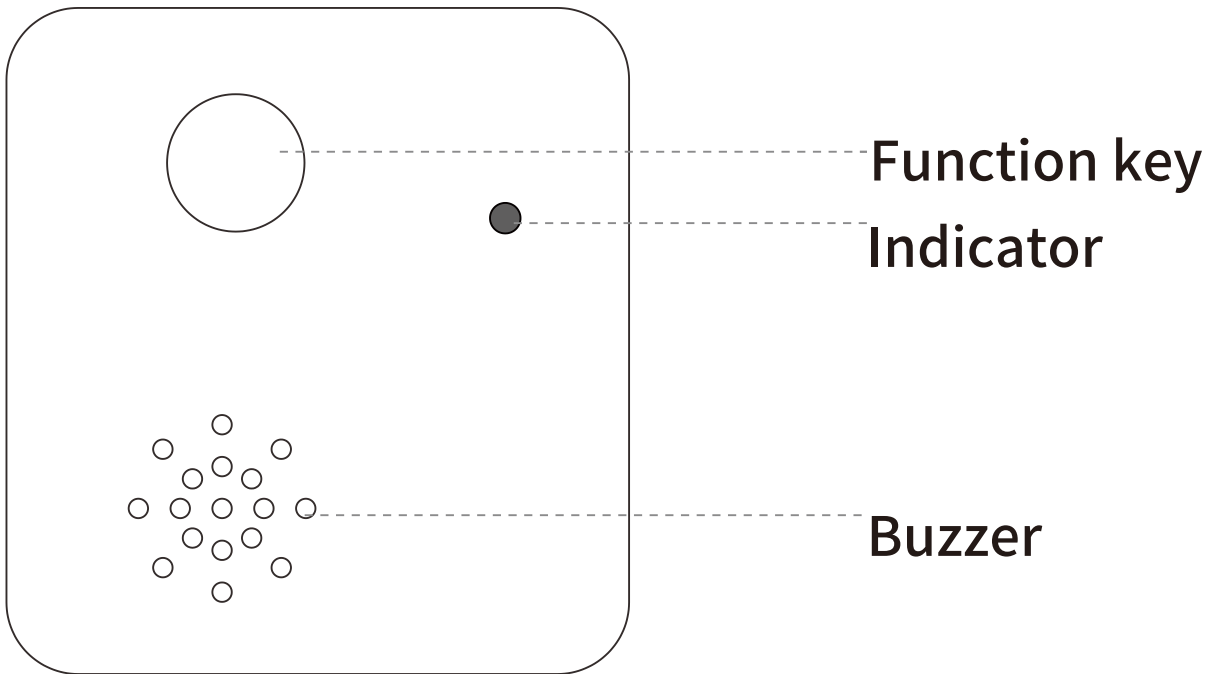
Transmission: 2.4G RF

Installation: 3M glue or screw fixed

Alarm: buzzer

Burglar alarm: support

---



Data sending: WiFi 2.4G

Transmission distance: RF 30 meters + WiFi 30 meters

Data receiving: RF 2.4G

APP: Eye4

Transmission: RF + WiFi

Plug standard: US/EU/UK/AU

Rated voltage: Wide voltage 100V-240V AC

Energy efficiency rating: 6 energy efficiency

---

## 2 Software download



- ① Visit [<http://www.ey44.so>] for software download and install
- ② Scan QR code download

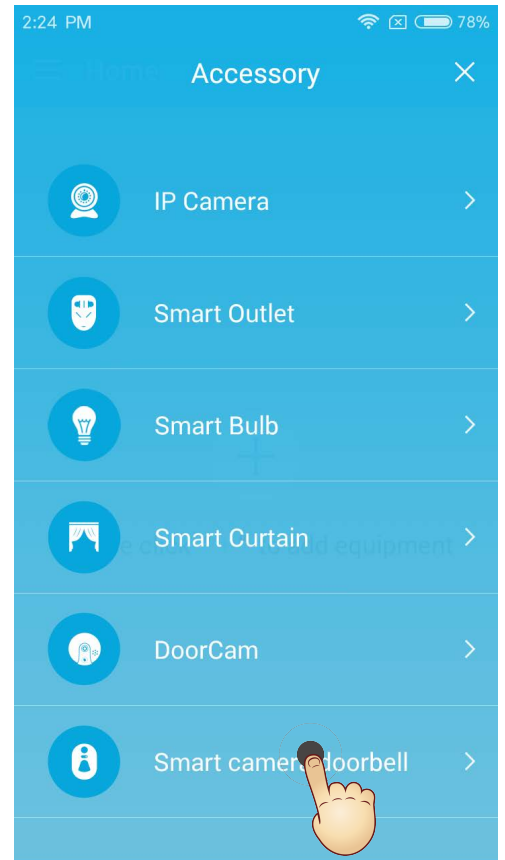
### 3 Register account

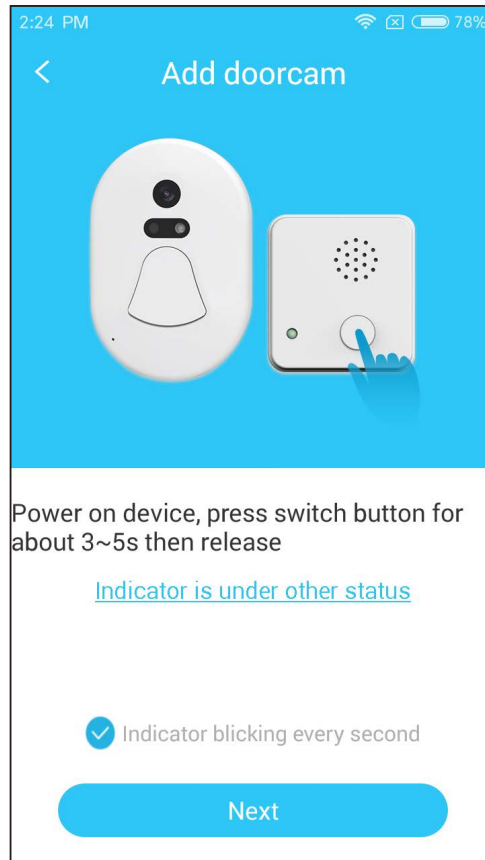
Android / iOS client APP please select “Register now” , click to enter the registration page, enter user name, password, then confirm to complete the registration.

### 4 Add device

#### APP add indoor unit

① Login APP, click the "+" button, choose to add "smart camera doorbell"; follow the APP prompt instruction, click Next.

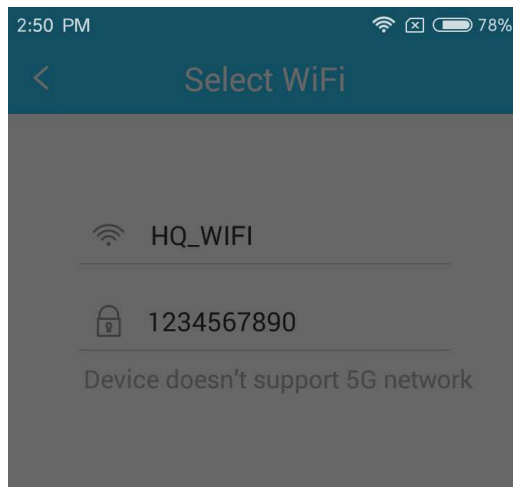




**Note: If the indicator does not flash at once per second, please reset the indoor unit. 【Reset method: Long press the function key for 3 ~5s release】**



② First time add needs to add the phone connected WiFi name and password, then enter the next step; APP will find nearby smart doorcam, custom name click binding will enter the automatic network configuration status(this process will lasts about 20 seconds), successfully bind doorcam will automatically show in the APP.



#### Select WiFi

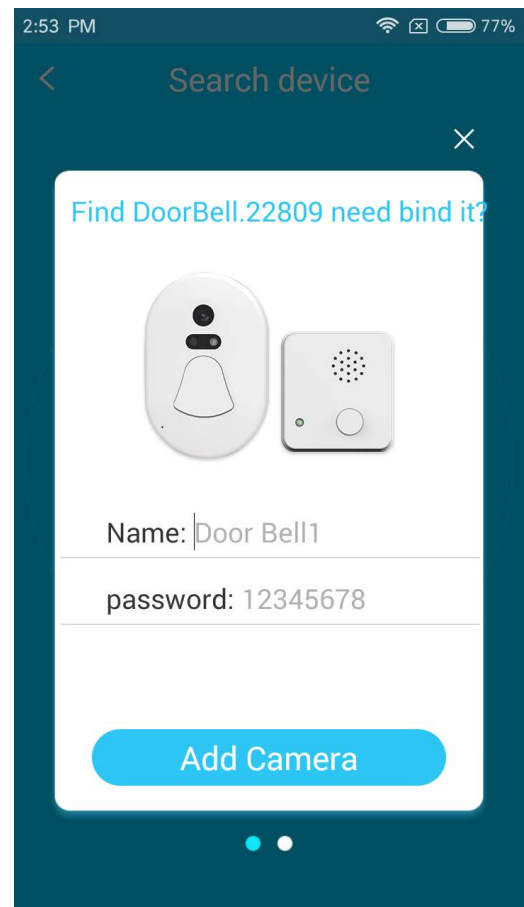
HQ\_WIFI

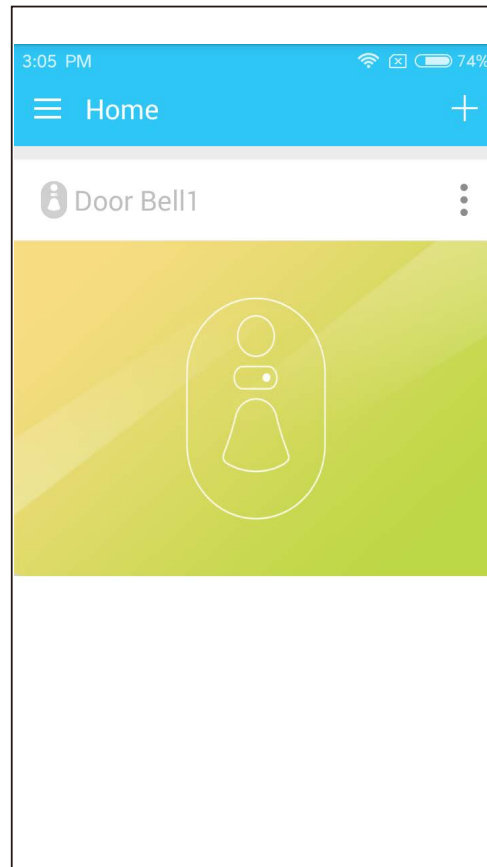
2017nm2z

tang123456

TP-LINK\_622EB0

yangnansheng



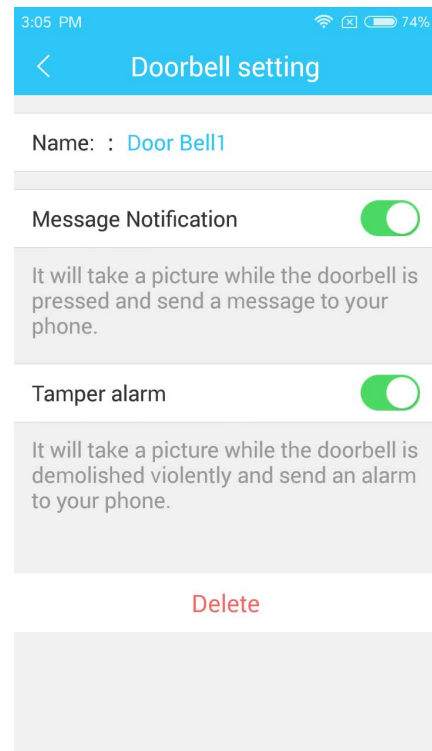
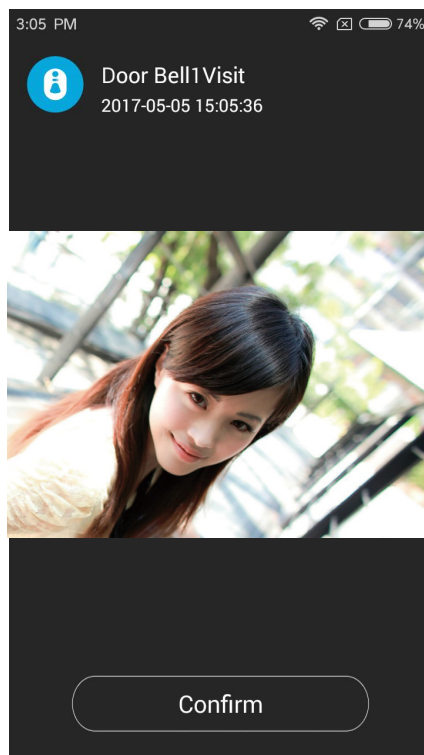



**Note: the indoor unit and outdoor unit has been matched before out of factory, in case of unexpected circumstances device can not use, please follow the below method to re-match the two units.**

- ① Long press the indoor unit function keys 10s to enter the waiting code matching status.
- ② Press the outdoor unit for 3s to send the code to the indoor unit, code matching complete.

## 5 How to use and set up

- ① When visitor comes to press the doorcam, the outdoor unit will snapshot, and push the picture to the smartphone; the indoor unit will also issue a corresponding notice tone.



- ② Click APP home page upper right corner icon , enter the doorcam setting, can set up whether to receive the push notification or not, and turn on or off the tamper alarm function.

## 6 Function and features

- ◎ Visitor records, visitor snapshot and other information are stored in the cloud, user can check at anytime, anywhere;
- ◎ Press doorcam, will automatically snapshot and push to the smartphone APP;
- ◎ CMOS image sensor;
- ◎ Easy to install, can use 3M adhesive paste installation or screw fixation;
- ◎ Ultra-low power consumption, 2pcs AAA batteries can last for one year;
- ◎ Never offline, WiFi + RF wireless transmission, always keep online;
- ◎ Anti-theft alarm function, when the outdoor unit leave the wall, the indoor unit will be issued an alarm;
- ◎ Clear night vision, even at no light condition can automatic fill light

# Service

If you need more help, please visit our FAQ:

 4006217868    4006217868

 <http://FAQ.ey4.so>

 [support@vstarcam.com](mailto:support@vstarcam.com)

 [support3@vstarcam.com](mailto:support3@vstarcam.com)

The manual is made based on the eye4 4.0 version, the interface will be some different cos of the app update.please refer to the actual version as standard .

Shenzhen VStarcam Technology Co., Ltd