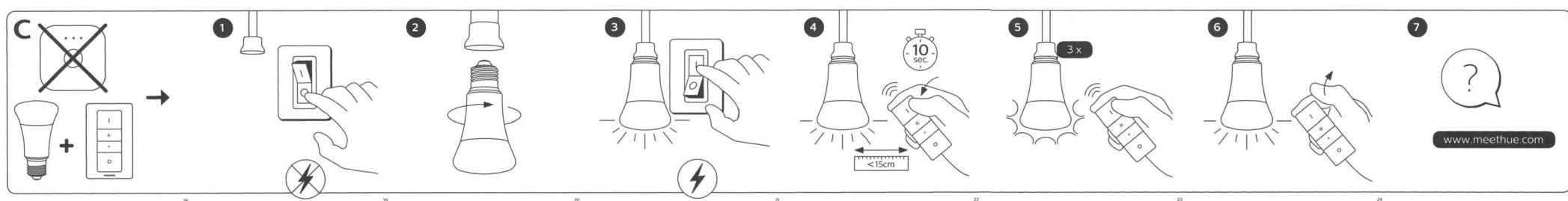
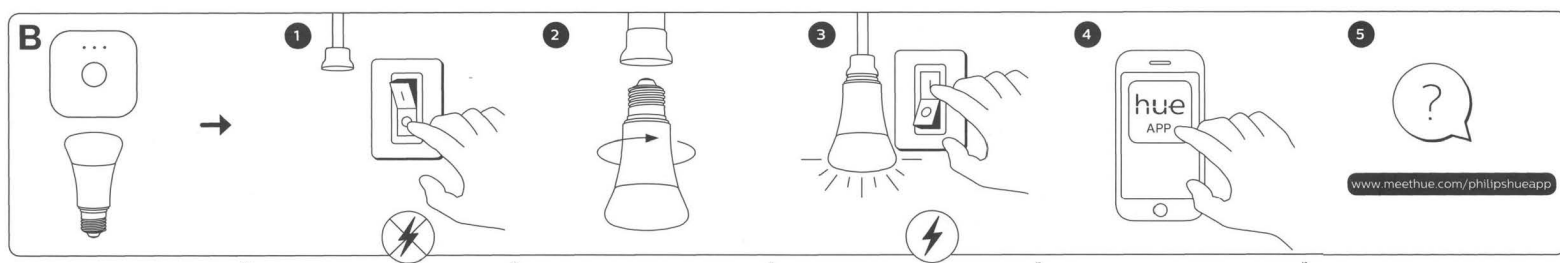
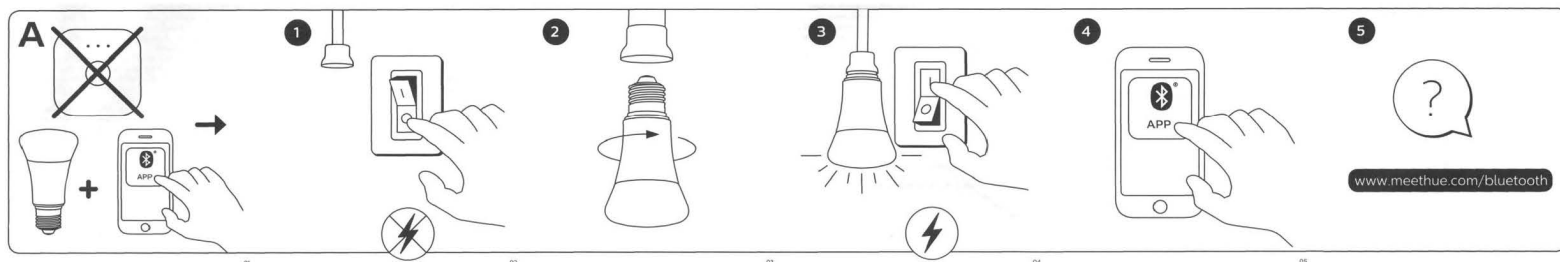


PHILIPS

hue personal
wireless
lighting



EN

To connect your new Hue bulb, select the installation instruction (A, B or C) that is applicable to you.

FR

Pour raccorder votre nouvelle ampoule Hue, sélectionnez la consigne d'installation (A, B ou C) qui s'applique à vous.

ES

Para conectar su nueva bombilla Hue, seleccione la instrucción de instalación (A, B o C) que sea aplicable en su caso.

Please go to www.meethue.com to learn more about Hue and how to use it.

This device complies with Part 15 of the FCC Rules and with RSS of Industry Canada. Operation is subject to the following two conditions: (1) this device may not cause harmful interference, and (2) this device must accept any interference received, including interference that may cause undesired operation.

This Class B digital apparatus complies with Canadian ICES-005.

This digital apparatus does not exceed the class B limits for radio-noise emissions from digital apparatus as set out in the Radio Interference Regulations of the Canadian Department of Communications.

NOTICE: Changes or modifications made to this device not expressly approved by Signify North America Corporation ("Signify") may void the U.S. FCC and Canadian authorization to operate this device.

The advanced interface module complies with FCC radiation exposure limits set forth for an uncontrolled environment.

This device should be installed and operated with a minimum distance of 20 centimeters between the radiator and your body.

The manufacturer is not responsible for any radio or TV interference caused by unauthorized modifications to this equipment. Such modifications could void the user's authority to operate the equipment.

This device has been tested and found to comply with the limits for a Class B digital device pursuant to Part 15 of the FCC rules. These limits are designed to provide reasonable protection against harmful interference in a residential installation. This device generates, uses, and can radiate radio frequency energy and, if not installed and used in accordance with the instructions, may cause harmful interference to radio communications.

However, there is no guarantee that interference will not occur in a particular installation. If this device does cause harmful interference to radio or television reception, which can be determined by turning the device off and on, the user is encouraged to try to correct the interference by one or more of the following measures:

- Reorient or relocate the receiving antenna
- Increase the separation between the device and receiver
- Connect the device into an outlet on a circuit different from that to which the receiver is connected
- Consult the dealer or an experienced radio/television technician for help

Any changes or modifications not expressly approved by the party responsible for compliance could void the user's authority to operate this equipment.

Caution: To maintain compliance with the FCC's RF exposure guidelines, place the product at least 20cm from nearby persons.

WARNINGS AND CAUTIONS:

- The bulb is suitable for use in open luminaires (fixtures).
- The bulb is not suitable for totally enclosed fixtures.
- The bulb is not intended for use with emergency exit fixtures or emergency lights.
- The bulb is not compatible with photo controls, occupancy sensors, or timing devices unless specifically designed for Hue.
- The bulb is not suitable for use with dimmers.
- Risk of electric shock – Do not use device where directly exposed to water.
- Before replacing, turn off power and let the bulb cool to avoid electrical shock or burn.

- The device is for indoor use only.
- Do not use the device in wet locations, e.g. bathrooms or outdoors.
- This device is not a toy designed to be played with by children.
- Do not place the device on hot surfaces.
- For safety reasons, do not open device, which will also void the warranty.
- Only use the adaptor supplied; using a different adaptor can damage the device.
- Use the bulb only in a socket rated for this bulb.
- **CAUTION - RISK OF ELECTRIC SHOCK.** Do not use if outer lamp envelope is damaged or broken.

LIMITED WARRANTY:

Signify warrants that this device will be free from defects in material and workmanship and will operate for 2 years based on up to 3 hours average usage per day/7 days per week, when used as directed. If this device does not conform to the warranty, Signify will send you, at its election, a replacement device or refund your original purchase price upon receipt of the returned device, register receipt and proof of purchase. Please call our toll-free number 1-800-555-0050, write to Signify (address indicated on the packaging) or send an email at the website www.meethue.com/warranty to find out how to

return the device. This limited warranty does not cover devices subject to accident, neglect, abuse, misuse or acts of God. REPLACEMENT OR REFUND IS YOUR SOLE REMEDY. EXCEPT TO THE EXTENT PROHIBITED BY APPLICABLE LAW, ANY IMPLIED WARRANTIES ARE LIMITED IN DURATION TO THE DURATION OF THIS WARRANTY. LIABILITY FOR INCIDENTAL OR CONSEQUENTIAL DAMAGES IS HEREBY EXPRESSLY EXCLUDED. Some states and provinces do not allow exclusion of incidental or consequential damages, so the above limitation or exclusion may not apply to you. This warranty gives you specific legal rights, and you may also have other rights which vary from state to state and province to province.

CLEANING AND MAINTENANCE:

Do not clean the device when it is on and connected to the power supply.

To avoid scratching the device, clean only with a soft dry cloth.

Do not use cleaning agents to clean the device.

Manage in accordance with disposal laws in your area.

“Hue Personal Wireless Lighting” is a trademark owned by Signify Holding B.V.

Philips and the Philips shield emblem are registered trademarks of Koninklijke Philips N.V.

Wireless Specification:

Wireless RF mode frequency band: 2400~2483.5 MHz

Operating channels Zigbee: channels 11 - 26

Operating channels Bluetooth: channels 0-39

Bluetooth® enabled product.

Environmental specification:

Temperature (operation): -20...45°C

Temperature (Storage): -25-60 °C

Relative humidity: 5-95 % non condensing

Standby power: <0.5W per lamp

The Bluetooth® word mark and logos are registered trademarks owned by Bluetooth SIG, Inc. and any use of such marks by Signify is under license. Other trademarks and trade names are those of their respective owners.

© 2019 Signify Holding

3222 639 03602