

Before the first use

⚠ Before using the machine for the first time, ensure that it is correctly installed and connected. Please read the separate operating instructions supplied with the appliance.

⚠ Failure to remove the transit bars can result in damage to the washing machine and to adjacent cabinetry or appliances. Remove the transit bars as described in "Installation and connection".

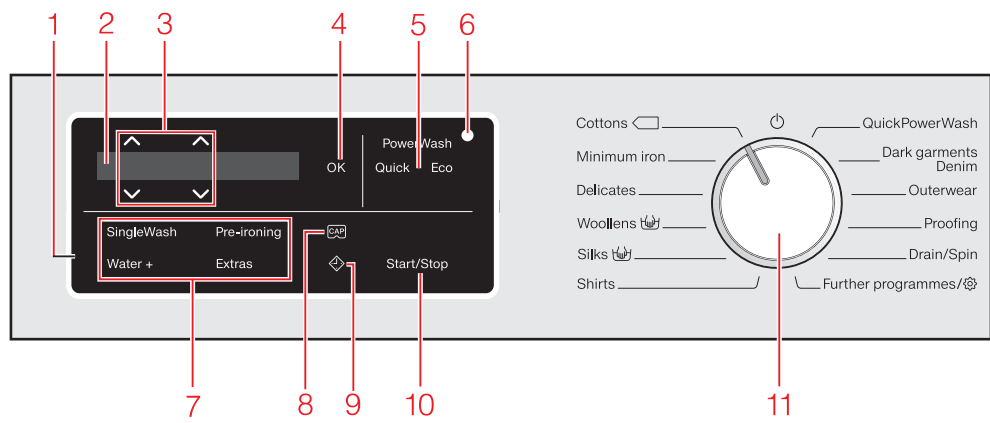
**Switching on the washing machine**

- Turn the programme selector to the Cottons programme.

The welcome tone will sound and the welcome screen will light up. The display will guide you through the initial commissioning process, which is divided into 3 steps.

For further information, please refer to the separate operating instructions.

Operating the washing machine



**Operating the sensor controls**

The sensor controls react to fingertip contact. Selection is possible as long as the respective sensor is illuminated.

If a sensor is brightly lit, this means: **currently selected**

If a sensor is dimly lit, this means: **selection possible**

- 1 Control panel**  
The control panel consists of a display and various sensor controls.
- 2 Display**  
The following values are shown and/or selected in the display:
- 3 Sensor controls**  $\wedge \vee$   
The values in the display can be changed with the  $\wedge \vee$  sensors.
- 4 OK sensor**  
The OK sensor is used to confirm selected values.
- 5 PowerWash display with the Quick and Eco sensors**  
If the PowerWash indicator lights up when you select a wash programme, you can choose between three programme sequences.
- 6 Optical interface**  
for service technicians.
- 7 Sensor controls for Extras**  
You can supplement wash programmes with Extras.
- 8  $\text{CapDosing}$  sensor**  
Activates detergent dispensing with a capsule.
- 9  $\text{Diamond}$  sensor**  
The sensor button  $\text{Diamond}$  starts the Delay start function.
- 10 Start/Stop sensor**  
Touching the Start/Stop sensor starts the selected programme or cancels a programme that has already started.
- 11 Programme selector**  
For selecting programmes and switching the washing machine off.

**Washing environmentally and economically**

- To get the most out of your machine, load the maximum dry load for the programme you are using.
- When smaller amounts of laundry are washed, the automatic load recognition system will reduce the amount of water and energy used.
- Use the *Express 20* programme for small, lightly soiled loads.
- Modern detergents enable washing at reduced temperatures (e.g. 20°C). Use appropriate temperature settings for saving energy.
- Reduce the amount of detergent with smaller loads (approx. 1/3 less than the amount recommended can be used when washing a half load).
- Selecting the highest possible spin speed for the wash programme will save energy when drying in a tumble dryer afterwards.

Preparing the laundry

**1. Preparing the laundry**

- Empty all pockets.

⚠ Foreign objects (e.g. nails, coins, paper clips, etc.) can cause damage to garments and components in the machine.

- Sort the laundry by colour and by care label. Most garments have a textile care label in the collar or side seam.
- Pre-treat stains and badly soiled areas (see the booklet "Miele's guide to laundry care").

- 2. Selecting a programme**
- Turn the programme selector to a programme.

**Programme selection**

There are two possible ways to select a programme:

- 1. Selecting standard programmes via the programme selector**
  - Turn the programme selector to the required programme.The selected programme will appear in the display. This will then be replaced by the standard display.

- 2. Selecting further programmes via the "Further programmes/⊗" position and the display**
  - Turn the programme selector to the *Further programmes/⊗* position.The following appears in the display: *Express 20*
  - Touch the  $\wedge \vee$  sensors until the programme you want appears in the display.
  - Confirm the programme with the OK sensor.

Selecting a programme

**3. Loading the washing machine**

**Opening the door**

- Reach under the door grip and pull the door open.
- Unfold the laundry and load loosely in the drum.

**Closing the door**

- Make sure that no items are caught between the door and the seal.

- Shut the door with a gentle swing.

4. Selecting programme settings

- Selecting a temperature/spin speed**
- Touch the  $\wedge \vee$  sensors above or below the temperature or spin speed value in the display until the temperature/spin speed you want appears in the display.

- Selecting Extras**
- There are two ways of selecting Extras.
- 1. Directly above the sensor controls**
    - Touch the sensor for the Extra you want. It then lights up brightly.
  - 2. Via the Extras sensor control and the display**
    - Touch the *Extras* sensor control.The following appears in the display: *No Extras*  $\checkmark$ 
    - Touch the  $\wedge \vee$  sensor controls until the Extra you want appears in the display and confirm this with the OK sensor.

Adding detergent

- 5. Adding detergent**
- Any detergent suitable for automatic front loading washing machines can be used with this appliance. Please observe the instructions for use and dosage on the detergent packaging.
- There are several options for adding detergent.

**Filling with detergent**

- Pull out the detergent drawer and add detergent to the compartments.

- Detergent for the pre-wash
- Detergent for the main wash, including Soak if selected
- Fabric softener, liquid starch or capsules

**Adding fabric softener**

- Add fabric softener or liquid starch to the  $\text{CapDosing}$  compartment.

**Do not exceed the maximum level mark.**

**Using detergent tablets or pods**

**Always** put detergent tablets or pods directly in the drum with the laundry. They cannot be added via the detergent dispenser drawer.

**CapDosing**

Three different types of capsule are available:

- Fabric care (e.g. fabric softener)
- Additives (e.g. detergent enhancers)
- Detergent

Each capsule contains the correct amount for one wash cycle. Capsules are available to order from Miele or from the Miele online shop (see the end of this booklet for contact details).

Keep capsules out of the reach of children.

- Activating CapDosing**
- Touch the  $\text{CapDosing}$  sensor.
- The following appears in the display: *No cap*  $\checkmark$
- Touch the  $\wedge \vee$  sensors until the capsule you want appears in the display.
  - Confirm the capsule with the OK sensor. See "Detergent" in the operating instructions for more information.

Starting the programme

6. Starting the programme - end of the programme

**Starting the programme**

- Touch the flashing *Start/Stop* sensor.

The door will lock ( appears in the display) and the programme will start.

- At the end of the programme**
- The door is still locked during the Anti-crease phase and the following will appear alternately in the display:
- Finish/Anti-crease and
  - Press Start/Stop
  - Touch the *Start/Stop* sensor. The door will be unlocked.
  - Pull open the door.
  - Remove the laundry.

Check that all items have been removed from the drum.

- Check the folds in the door seal for any small articles, e.g. buttons, which might be lodged there.

- Turn the programme selector to the  $\text{Diamond}$  position. This switches the washing machine off.
- If applicable, remove the used capsule from the detergent dispenser drawer. Close the door. Otherwise there is a danger of objects being placed inadvertently in the drum. If these remain unnoticed and were washed in the next load, they could damage the laundry. An open door is also a danger to pets and children.

Extras

**Extras**

You can use the Extras sensor to augment the wash programmes.

**SingleWash**

For efficiently washing a very small load (< 1 kg) in a normal wash programme. The wash duration is reduced. Please note the following advice:

- Use liquid detergent
- Reduce the dosage to a maximum of 50% of the amount quoted for a 1/2 load

**Pre-ironing**

In order to reduce creasing, the laundry undergoes a smoothing process at the end of the programme. Reducing the maximum load by 50% will give a better result. Follow the instructions in the display. Small loads give a better result. The garments must be suitable for drying in a tumble dryer and suitable for ironing .

**Water +**

The water level in the wash and rinse stages is increased and a second rinse is carried out in the "Separate rinse/Starch" programme. You can select other functions for the *Water +* sensor control. These are described in "Settings".

**Pre-wash**

For laundry with large amounts of dirt, e.g. dust and sand.

**Soak**

For heavily soiled and stained items with protein stains. A duration of between 30 minutes and 6 hours can be chosen for the soak process. See "Settings" for more information. The factory default setting is 30 minutes.

**Intensive**

For hard-wearing laundry that is very heavily soiled. Cleaning efficiency is increased through more intense mechanical action and the application of more heat energy.

**Extra quiet**

This option reduces noise levels during the wash programme. Use this if you want to wash during quiet periods (for instance, when children are sleeping). The final spin is automatically reduced to (Rinse hold). The programme duration is increased.

**Extra gentle**

Drum rotation and wash duration are reduced. Lightly soiled fabrics are washed more gently.

**AllergoWash**

This option should be used where high standards of hygiene are required. More energy is used to lengthen temperature holding times and more water is used to increase rinsing efficiency. The items must be suitable for drying in a tumble dryer and suitable for ironing .

Programme chart

Programme	Load (in kg)	Temperature	Items	Extras
Cottons	8.0	Cold to 90°C	Cottons, linens or cotton mix fabrics, e.g. table linen, towelling, underwear, T-shirts etc.	(A), (B), (C), (D), (E), (F), (G), (H), (I)
Minimum iron	4.0	Cold to 60°C	Synthetic, mixed fibre and easy care cotton.	(A), (B), (C), (D), (E), (F), (G), (H), (I)
Delicates	3.0	Cold to 60°C	Delicate garments made from synthetic fibre, mixed fibre, rayon and viscose.	(A), (B), (C), (D), (E), (F), (G), (H), (I)
Woolens	2.0	Cold to 40°C	Machine-washable or hand-washable wool or wool blend fabric. If the care label does not specify a temperature, wash using the cold setting.	(A), (B), (C), (D), (E), (F), (G), (H), (I)
Silks	1.0	Cold to 30°C	Silks and other hand-washable fabrics with no wool content, e.g. satin, lace and silk.	(A), (B), (C), (D), (E), (F), (G), (H), (I)
Shirts	1.02.0	Cold to 60°C	Shirts and blouses made of cotton and mixed fibre. If the preset <i>Pre-ironing</i> option is switched off, the maximum load capacity is increased to 2.0 kg.	(A), (G)
QuickPowerWash	5.0	40°C – 60°C	Moderately soiled garments which are also suitable for washing in the <i>Cottons</i> programme.	(A), (B), (C), (D), (E), (F), (G), (H), (I)
Dark garments/ Denim	3.0	Cold to 60°C	Black and dark garments made from cotton, mixed fibres and denim.	(A), (B), (C), (D), (E), (F), (G), (H), (I)
Outerwear	2.5	Cold to 40°C	Performance outerwear (e.g. jackets and trousers) made from membrane fabric such as Gore-tex®, SYMPATEX®, WINDSTOPPER® etc.	(A), (B), (C), (D), (E), (F), (G), (H), (I)
Proofing	2.5	40°C	Treating microfibre fabric, skiwear and table linen made from mainly synthetic fibres to provide a water and dirt resistant finish.	(A), (B), (C), (D), (E), (F), (G), (H), (I)
Drain/Spin	8.0	-	Drain only: Select 0 rpm for the spin speed.	(A), (B), (C), (D), (E), (F), (G), (H), (I)
Express 20	3.5	Cold to 40°C	Cotton garments that have hardly been worn or are only very lightly soiled.	(A), (B), (C), (D), (E), (F), (G), (H), (I)
Sportswear	3.0	Cold to 60°C	Sportswear such as jersey shirts and leggings, and microfibre and fleece garments.	(A), (B), (C), (D), (E), (F), (G), (H), (I)
Automatic plus	6.0	Cold to 40°C	Mixed loads of garments sorted according to colour which are suitable for the <i>Cottons</i> and <i>Minimum iron</i> programmes.	(A), (B), (C), (D), (E), (F), (G), (H), (I)
Separate rinse/ Starch	8.0	-	For rinsing items washed by hand. Starching table cloths, serviettes and workwear.	(A), (B), (C), (D), (E), (F), (G), (H), (I)
Clean machine	No load	85°C	With frequent washing at low temperatures there is a danger of a build-up of bacteria in the washing machine. Cleaning the washing machine will significantly reduce bacteria, mould, and biofilm, and prevent the build-up of unpleasant odours.	(A), (B), (C), (D), (E), (F), (G), (H), (I)

(A) = SingleWash; (B) = Pre-ironing; (C) = Water+, (D) = Pre-wash; (E) = Soak; (F) = Intensive; (G) = Extra quiet; (H) = Extra gentle; (I) = AllergoWash

Detergent

Miele recommended detergents

Programmes	Miele UltraWhite	Miele UltraColor	Miele Cap	Miele Cap	Miele Cap
Cottons	✓	✓	–	(D)	(E)
Minimum iron	–	✓	–	(D)	(E)
Delicates	–	✓	(C)	(D)	–
Woolens	–	–	(C)	–	–
Silks	–	–	(C)	–	–
Shirts	✓	✓	–	(D)	(E)
QuickPowerWash	✓	✓	–	–	–
Dark garments/ Denim	–	✓	–	(D)	–
Outerwear	–	–	–	–	–
Proofing	–	–	–	–	–
Express 20	–	✓	–	(D)	–
Sportswear	–	–	(A)	–	–
Automatic plus	–	✓	–	(D)	(E)
Separate rinse/ Starch	–/–	–/–	–/–	(D)/–	–/–

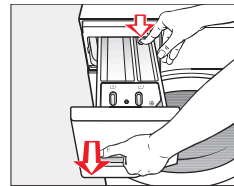
✓ = Recommended; – = Not recommended  
(A) = Sportswear; (B) = Down Items; (C) = WoolCare; (D) = Fabric Softener; (E) = Booster

Cleaning and care

Cleaning the detergent dispenser drawer

Washing at low temperatures and the use of liquid detergent can lead to a build-up of mould and bacteria in the detergent dispenser drawer.

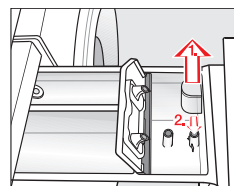
- For hygiene reasons, clean the entire drawer at regular intervals.



- Pull out the detergent dispenser drawer until a resistance is felt.

- Press down the release button and, at the same time, pull the drawer right out of the machine.
- Clean the detergent drawer with warm water.

Cleaning the siphon tube and the fabric softener channel

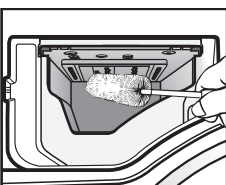


- Clean the siphon tube in the same way.
- Refit the siphon.



⚠ Liquid starch can cause the siphon to become clogged. Make sure that you clean the siphon and siphon tube particularly thoroughly after using liquid starch a few times.

Cleaning the detergent dispenser drawer housing



- Use a bottle brush to remove detergent residues and limescale from the jets inside the detergent dispenser drawer housing.

Cleaning the drum (Hygiene info)

Washing at low temperatures and/or using liquid detergents can cause bacteria and odours to build up in the washing machine. Use the Clean machine programme to clean the machine. Note the message in the display:

Hygiene info:  
Run a programme at min. 75°C or "Clean machine"

Problem solving guide

Some of the messages in the display are more than one line long. Touch the V or ^ sensor to read them in full.

Message	Possible cause and remedy
The control panel remains dark.	<ul style="list-style-type: none"><li>There is no power to the machine.</li><li>Check whether the mains plug is plugged in and switched on.</li><li>Check whether the circuit breaker has tripped.</li></ul> <p>The washing machine has switched off automatically to save energy.</p> <ul style="list-style-type: none"><li>Switch the washing machine on again by turning the programme selector.</li></ul>
Door lock. Service	<p>The door is not closed properly. The door lock could not engage.</p> <ul style="list-style-type: none"><li>Close the door again.</li><li>Start the programme again. If the fault message appears again, contact Miele.</li></ul>
Check drainage. See	<p>The water outlet is blocked or restricted. The drain hose has been fixed too high.</p> <ul style="list-style-type: none"><li>Clean the drain filter and the pump.</li><li>Check whether the maximum delivery head of 1 m has been exceeded.</li></ul>
Water intake. See	<p>The water inlet is blocked or restricted.</p> <ul style="list-style-type: none"><li>Check whether the tap is turned on properly.</li><li>Check whether the inlet hose is kinked.</li><li>Check whether there is sufficient water pressure.</li></ul>
Service. Waterproof syst. Turn off	<p>The filter in the water inlet is blocked.</p> <ul style="list-style-type: none"><li>Clean the filter (see the operating instructions).</li></ul> <p>The water protection system has reacted.</p> <ul style="list-style-type: none"><li>Turn off the tap.</li><li>Call Miele.</li></ul>
Service. Fault F	<p>There is a fault.</p> <ul style="list-style-type: none"><li>Disconnect the washing machine from the mains electricity supply, either by switching it off at the wall socket and withdrawing the plug, or by disconnecting it at the circuit breaker.</li><li>Wait <b>at least 2 minutes</b> before reconnecting the washing machine to the mains electricity supply.</li><li>Then switch the washing machine on again.</li><li>Restart the programme.</li></ul> <p>If the fault message appears again, contact Miele.</p>
Door jammed. Service.	<p>The door lock has jammed.</p> <ul style="list-style-type: none"><li>Call Miele.</li></ul>

Message	Possible cause and remedy
Check detergent	<p>Excessive foam has built up during washing.</p> <ul style="list-style-type: none"><li>Check the amount of detergent dispensed.</li><li>Observe the instructions on the detergent packaging and the degree of soiling of the laundry.</li><li>If necessary, reduce the dosage amount by increments of 10%.</li></ul> <p>A programme using a temperature above 60°C has not been run for a long time.</p> <ul style="list-style-type: none"><li>Turn the programme selector to <i>Further programmes</i> and select the Clean machine programme in the Maintenance submenu.</li><li>Run the Clean Machine programme using the Miele IntenseClean machine cleaner or a universal powder detergent. This will clean the washing machine and prevent a build-up of bacteria and odours.</li></ul>
Hygiene info: Run a programme at min. 75°C or "Clean machine" programme	<p>The <i>Pre-ironing</i> Extra which runs at the end of the programme could not be carried out properly.</p> <ul style="list-style-type: none"><li>Check whether the washing machine is aligned correctly as described in "Installation and connection – Levelling the machine".</li><li>Check whether the maximum delivery head of 1 m has been exceeded.</li></ul> <p>If the fault message appears again, contact Miele. The washing machine can still be used, however without the <i>Pre-ironing</i> Extra.</p>
Align the washing machine	<p>The pumps are dirty.</p> <ul style="list-style-type: none"><li>Clean the pumps as described in "Problem solving guide - Opening the door in the event of a blocked drain outlet and/or power cut".</li><li>Start the programme again after cleaning.</li></ul>
Check filter + jet	<p>The jet in the top of the door ring is blocked with fluff.</p> <ul style="list-style-type: none"><li>Remove the fluff with your finger. Do not use any sharp or pointed tools to do this.</li><li>Start the programme again after cleaning.</li></ul> <p>If the fault message appears again, contact Miele. The washing machine can still be used but with reduced functionality.</p>

The messages will appear at the end of the programme and when the washing machine is switched on and need to be confirmed with the OK sensor.

Quick Start Guide Washing machine



These short instructions are not a substitute for the operating instructions supplied with the appliance. Please read the operating instructions supplied with your washing machine before using it for the first time and take note of the Warning and Safety instructions, as well as the full descriptions on how to use your appliance.