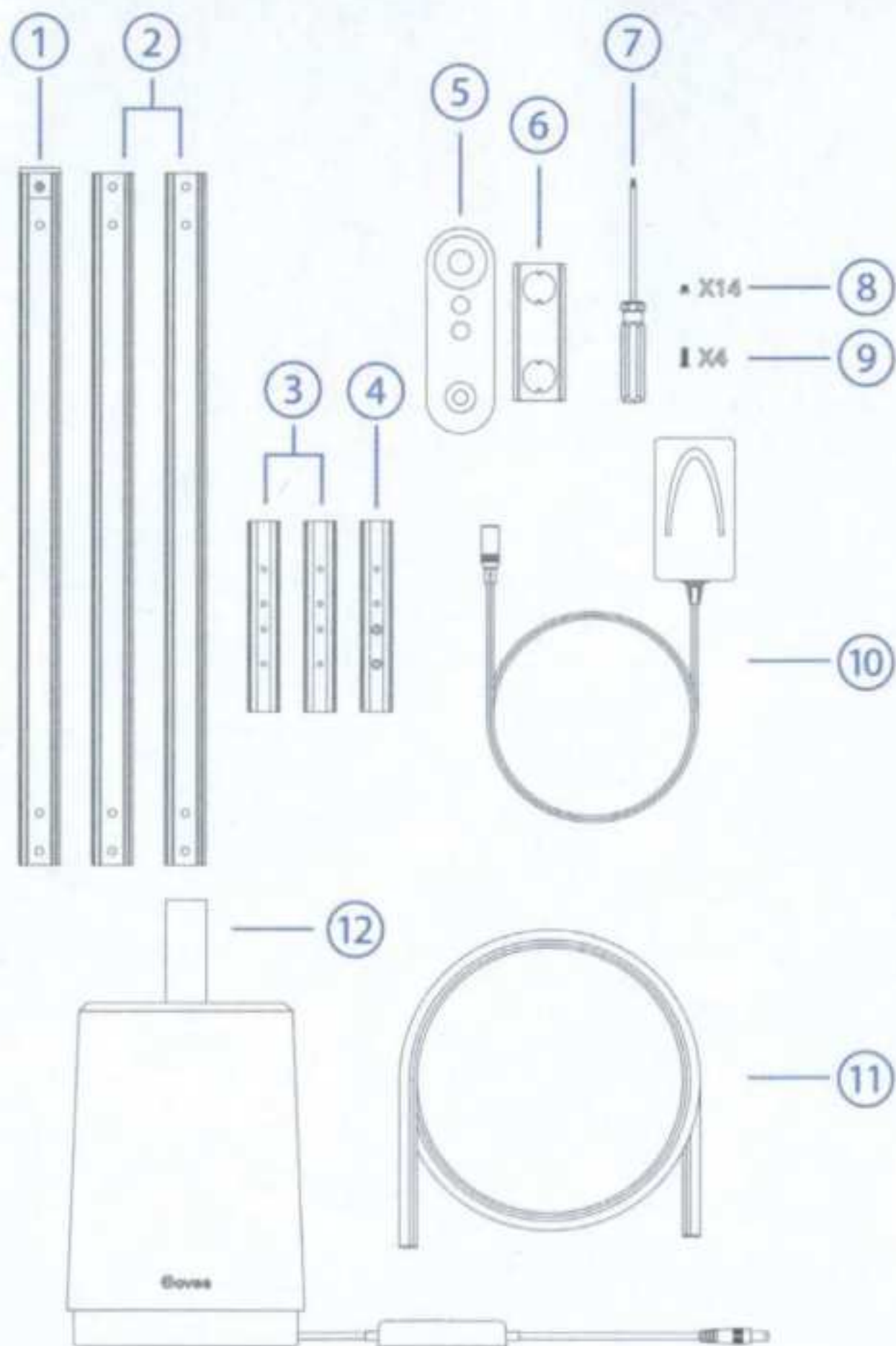




Govee Lyra Floor Lamp Quick Start Guide

For the installation video tutorial

- Visit the Govee Lyra floor lamp product page On [Store.Govee.com](https://www.govee.com)
- Search "Govee Lyra Floor Lamp" on Amazon or YouTube



• In the Box

- | | |
|---|---|
| ① | Metal Slot 1 (Top with a cover) |
| ② | Metal Slot 2 (With 4 symmetrical holes) |
| ③ | Metal Connecting Part |
| ④ | Metal Connecting Part (For the lamp base) |
| ⑤ | Remote Controller |
| ⑥ | Remote Controller Holder |
| ⑦ | Screwdriver |
| ⑧ | Short Screw x14 (4 extra) |
| ⑨ | Long Screw x4 (2 extra) |
| ⑩ | Power Adapter |
| ⑪ | Silicone Strip Light |
| ⑫ | Lamp Base |

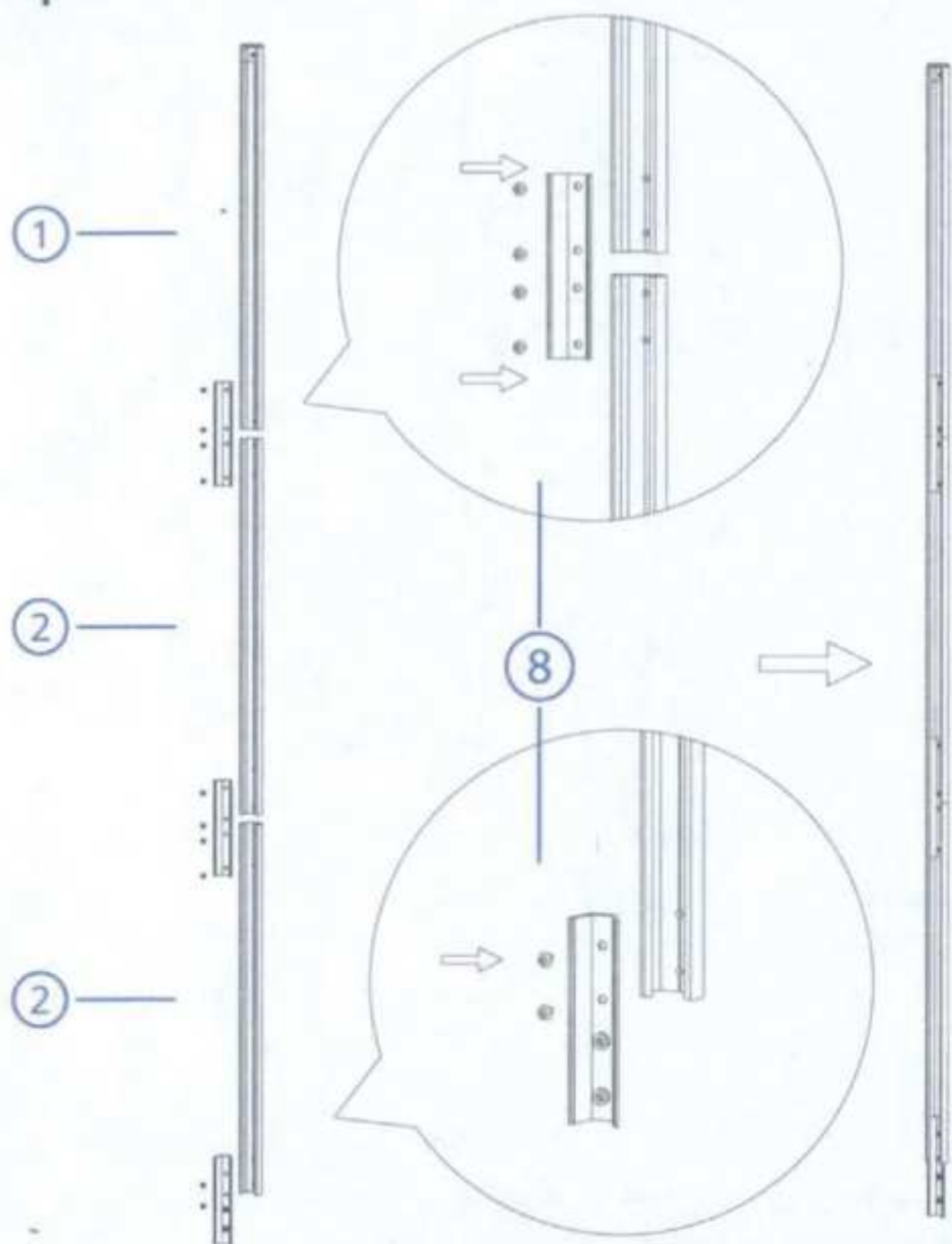
Installation Step

Step 1

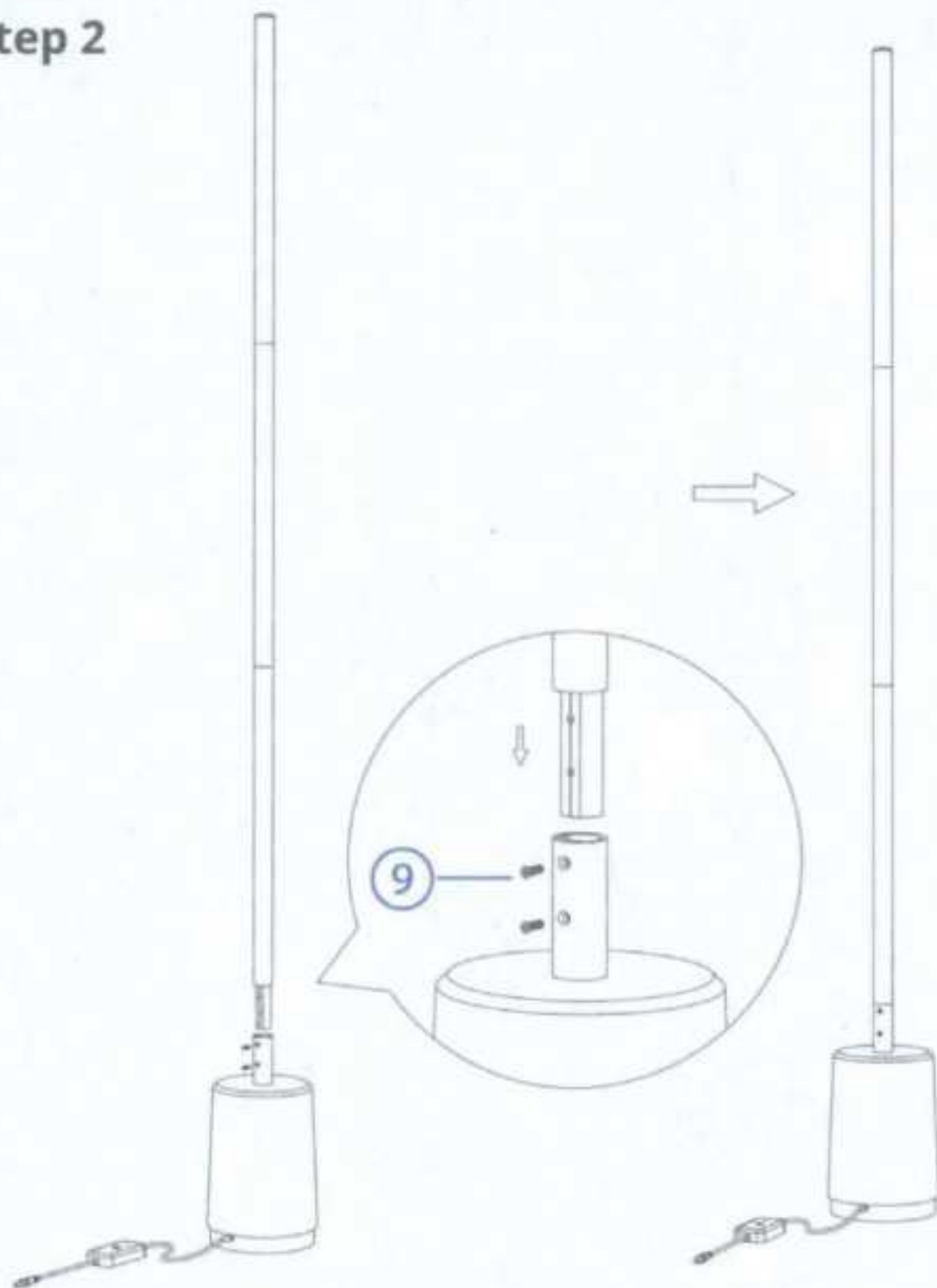
Assemble the lamp pole: Align the three metal slots in the correct sequence and connect them with the 3 metal connecting parts. Use the short screws in the corresponding holes to secure each connecting part to the metal slots.

Installing Steps

Step 1



Step 2



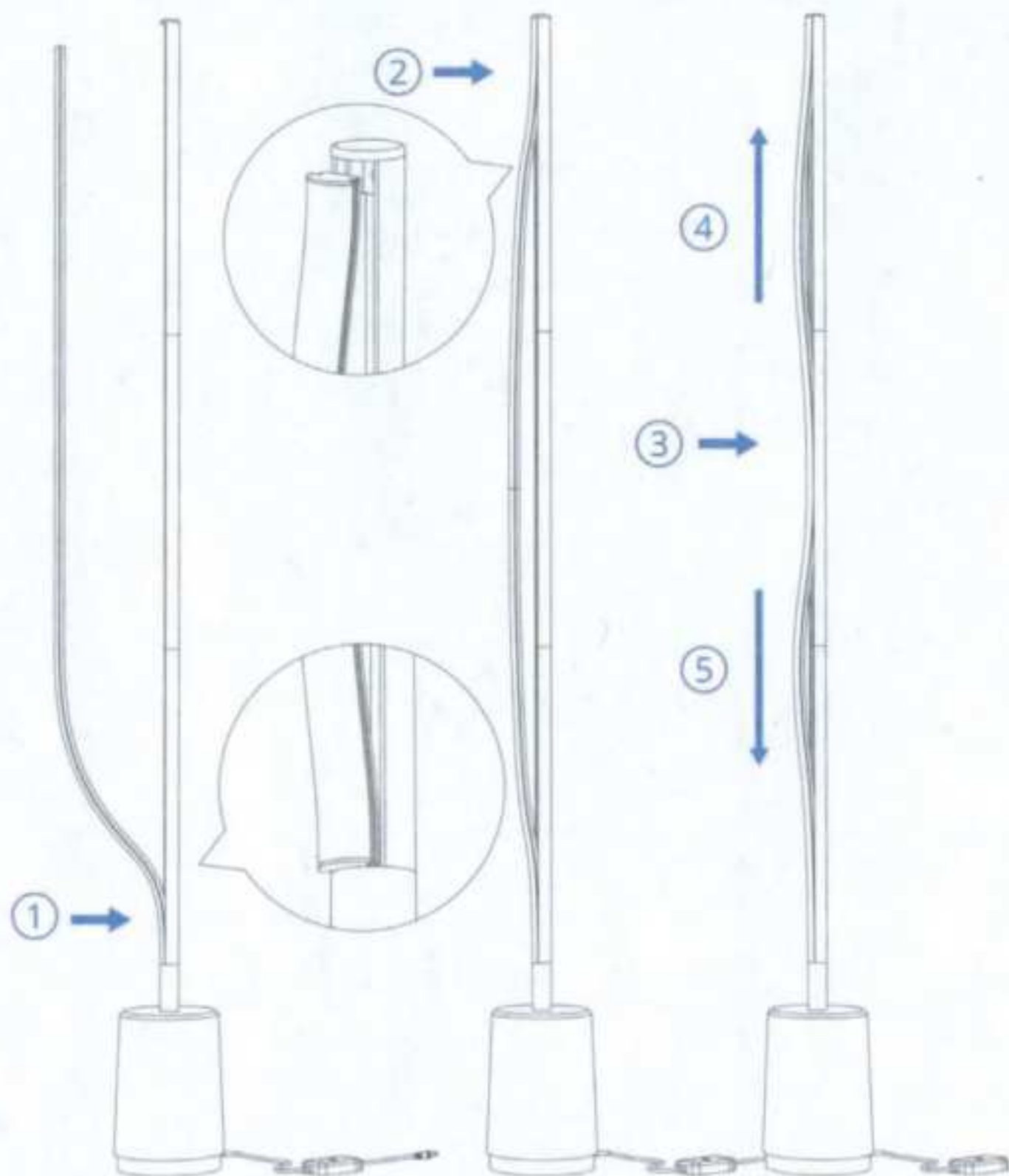
Connecting the lamp pole and lamp base: Insert the connected lamp pole into the lamp base. Use the long screws to secure the final connecting part via the two holes on the base.

Step 3



Straighten the silicone strip light. Connect the wires on the silicone strip light to the wires in the port of the lamp base (wires should be connected by color).

Step 4

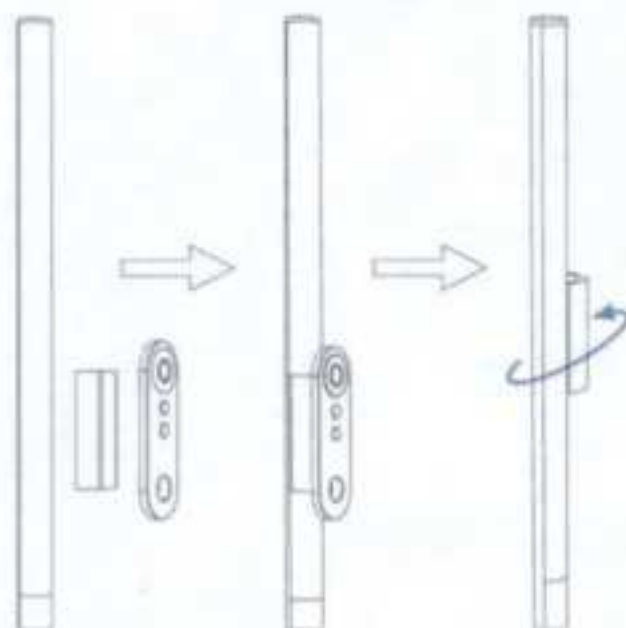


Ensure the exposed wires are inside the lamp base.
Attach the silicone strip light by following the image above. Finally press the strip light from the middle outwards to the two ends.

Step 5

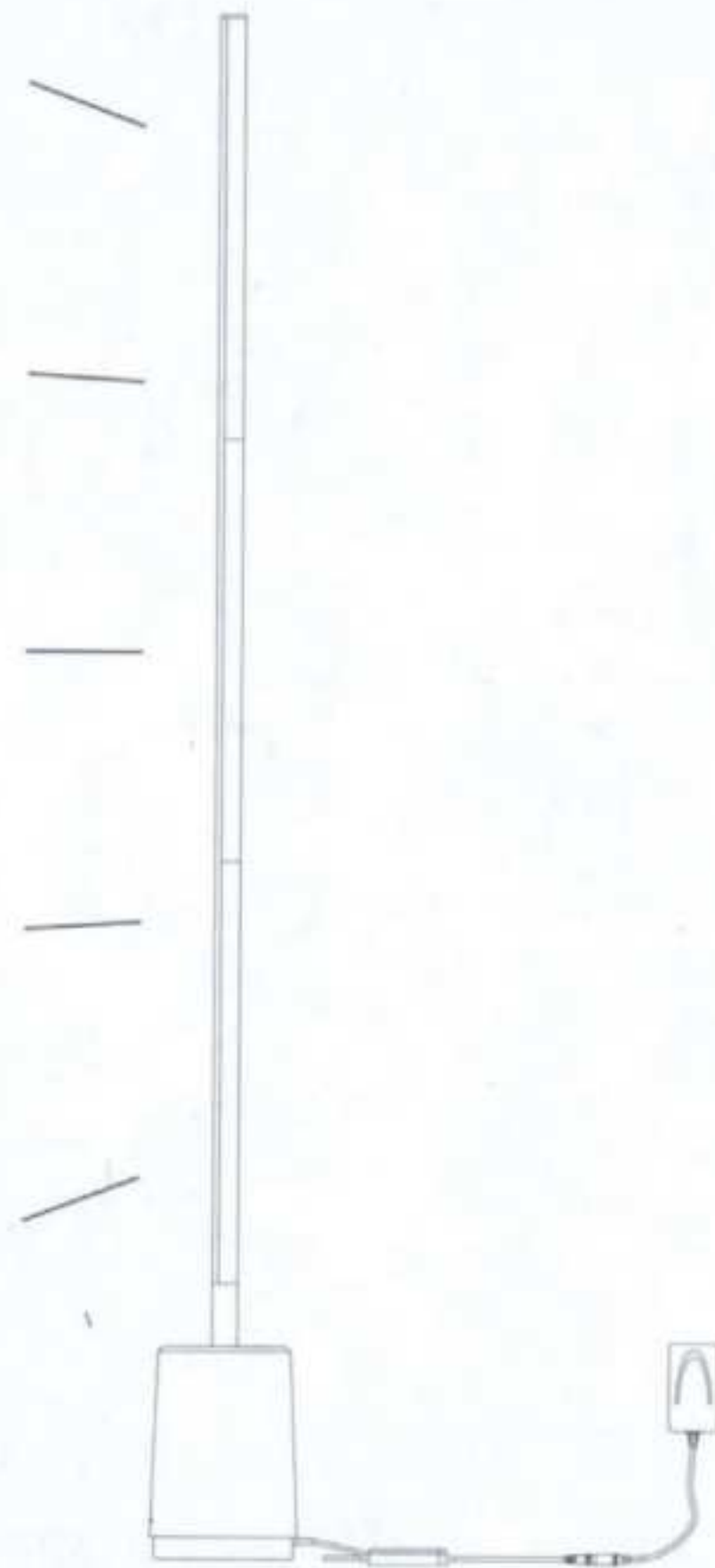


Connect the adapter to the cable of the lamp base and plug the adapter into a socket. Then you can start using the product.



Optional:

Attach the holder to the lamp pole and then the remote controller. Rotate the holder to detach it from the lamp pole if you need to remove it.





User Manual

Model: H6072
Govee Lyra Floor Lamp

Safety Instructions

Read and follow all the safety instructions:

- The lamp is not waterproof. Avoid exposing it to splashing or dripping water.
- The operating temperature should be within -10° to 40°C (14° to 104°F).
- The lamp's internal light source cannot be replaced. If it breaks, you must replace the lamp.
- Do not allow children to install the lamp alone.
- Avoid placing the lamp near heat sources.
- Do not install the lamp with a dimming driver.
- Avoid placing the lamp near potentially dangerous sources (e.g., candles, liquid-filled objects).

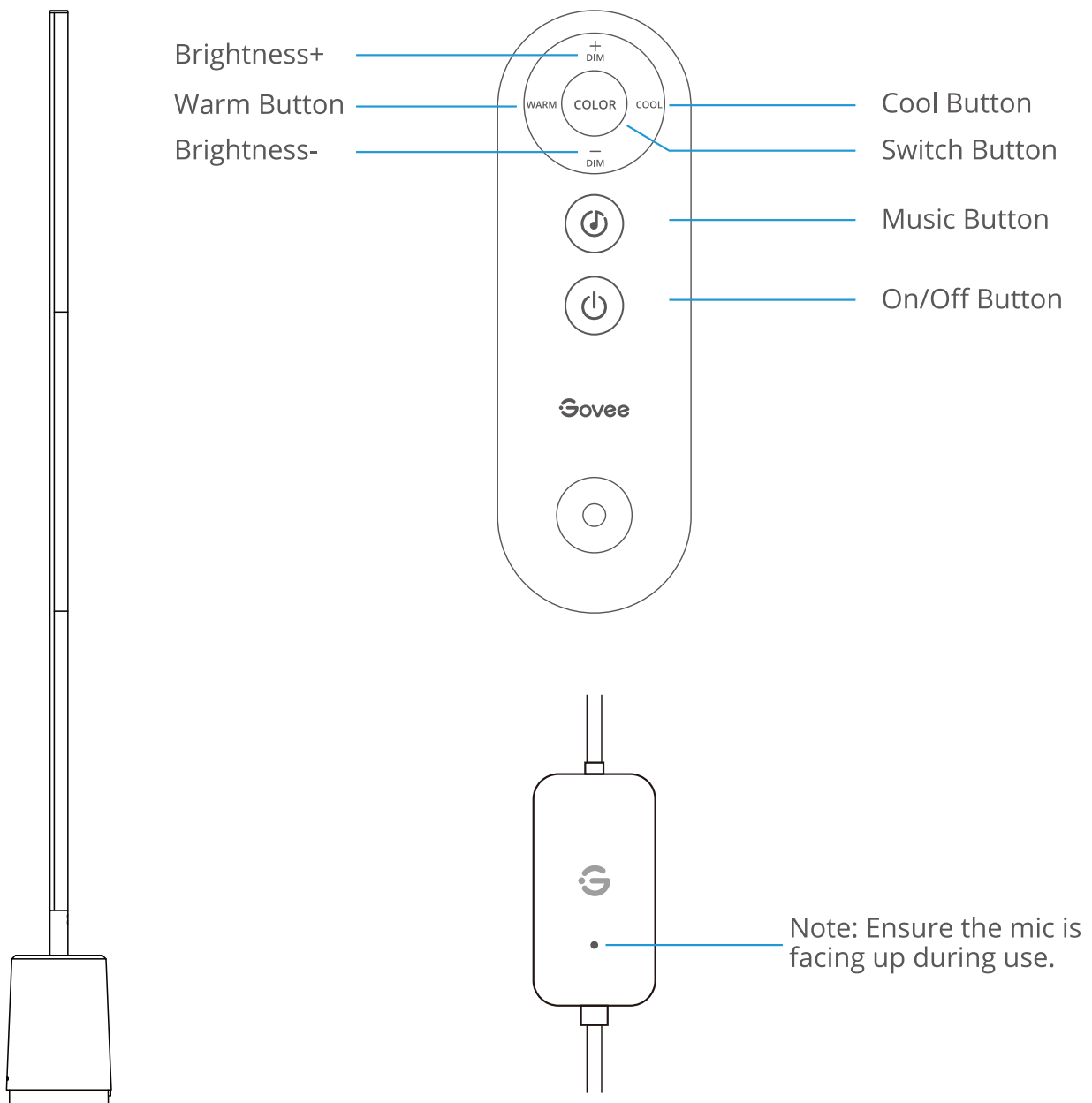
Introduction

Thanks for choosing the Govee Lyra Floor Lamp. With a simple and slender design, it can easily fit with your home decor. Let your life shine with colorful light effects, a dynamic Music mode, and a host of other incredible features, all providing you an astonishing lighting experience!

What You Get

Floor Lamp	1
Control Box	1
Adapter	1
Remote Controller	1
Remote Controller Holder	1
Quick Start Guide	1
User Manual	1
Service Card	1

At a Glance



On/Off Button	Press to power the lamp On/Off.
Brightness+	Press to increase the brightness.
Brightness-	Press to decrease the brightness.
Switch Button	Press to switch between 7 different colors.
Warm Button	Press to make colors warm or increase warmth.
Cool Button	Press to make colors cool or increase coolness.
Music Button	Press to switch between different music modes.

Installing Your Device

- 1 Connect the adapter to the control box with the DC charging port.
- 2 Power on the adapter.

Pairing Your Device with the Govee Home App

What You Need:

- A Wi-Fi router supporting the 2.4GHz and 802.11 b/g/n bands. 5GHz is not supported.
 - A smartphone or tablet running iOS 8.0 (or above) or Android 4.3 (or above).
- 1 Download the Govee Home app from the App Store (iOS devices) or Google Play (Android devices).
 - 2 Open the app, tap the “+” icon in the top right corner and search for “H6072”.
 - 3 Tap the device icon and follow the onscreen instructions to complete pairing.



Specifications

Adapter Input	AC 100 - 240V
Lamp Input	24V/1.5A
Lumen	1500lm
Lighting Color	RGBICWW
Color Temperature	2200K-6500K
Control Method	Remote Controller, App, Voice Control
Working Temperature	-10° to 40°C (14° to 104°F)

Troubleshooting

1 Cannot connect to the Govee Home app.

- Check if the lamp is powered on.
- Check if Bluetooth on the smartphone is enabled, or try connecting with another smartphone.
- When connecting for the first time, ensure the smartphone is near the lamp.
- If the connection error still exists, please delete the connected lamp from “My Device” on the app. Reconnect to the Govee Home app by following the instructions provided previously.

2 Wi-Fi disconnected or failed to connect.

- Check if the lamp is powered on.
- Do not skip the Wi-Fi connection steps during the lamp pairing process.
- Ensure your Wi-Fi router is 2.4GHz (5GHz is not supported).
- Ensure you entered the correct Wi-Fi password during the Wi-Fi set up process.
- Try connecting the lamp with a smartphone hotspot to check if your home network is working properly.
- Shorten the distance between the lamp and the Wi-Fi router to less than 1m, then reconnect.

3 Cannot connect to Alexa or Google Assistant.

- Ensure the Wi-Fi connection is stable and working properly.
- Go to “User Guide” on the app Settings page to pair the lamp again.

4 Can multiple users control one lamp.

- Each lamp can only be controlled by one account.
- If multiple users want to manage the same lamp, ensure they all use the same account.

Customer Service

 Warranty: 12-Month Limited Warranty

 Support: Lifetime Technical Support

 Email: support@govee.com

 Official Website: www.govee.com

 @Govee  @govee_official  @govee.official

 @Goveeofficial  @Govee.smarthome

FCC and ISED Canada Statement

This device complies with Part 15 of the FCC Rules and Industry Canada licence-exempt RSS standard(s). Operation is subject to the following two conditions:

(1) This device may not cause harmful interference, and (2) This device must accept any interference received, including interference that may cause undesired operation.

Warning: Changes or modifications not expressly approved by the party responsible for compliance could void the user's authority to operate the equipment.

Le présent appareil est conforme aux CNR d'Industrie Canada applicables aux appareils radio exempts de licence. L'exploitation est autorisée aux deux conditions suivantes :

(1) l'appareil ne doit pas produire de brouillage, et

(2) l'utilisateur de l'appareil doit accepter tout brouillage radioélectrique subi, même si le brouillage est susceptible d'en compromettre le fonctionnement."

NOTE: This equipment has been tested and found to comply with the limits for a Class B digital device, pursuant to Part 15 of the FCC Rules.

These limits are designed to provide reasonable protection against harmful interference in a residential installation. This equipment generates uses and can radiate radio frequency energy and, if not installed and used in accordance with the instructions, may cause harmful interference to radio communications. However, there is no guarantee that interference will not occur in a particular installation. If this equipment does cause harmful interference to radio or television reception, which can be determined by turning the equipment off and on, the user is encouraged to try to correct the interference by one or more of the following measures:

1. Reorient or relocate the receiving antenna.
2. Increase the separation between the equipment and receiver.
3. Connect the equipment into an outlet on a circuit different from that to which the receiver is connected.
4. Consult the dealer or an experienced radio/TV technician for help.

FCC and IC Radiation Exposure Statement

This equipment complies with FCC and IC radiation exposure limits set forth for an uncontrolled environment. This equipment should be installed and operated with minimum distance 20cm between the radiator & your body.

la distance entre l'utilisation et l'appareil ne doit pas être inférieure à 20 cm.

Non-replaceable light source.

Not intended for illumination. Only used for creating ambiance.

Govee is a trademark of Shenzhen Intellirocks Tech Co.,Ltd.

Copyright ©2021 Shenzhen Intellirocks Tech Co.,Ltd. All Rights Reserved.



Govee Home App

For FAQs and more information,
please visit: www.govee.com